



+44 (0)1706 649217



+44 (0)1706 655512



www.dunphy.co.uk

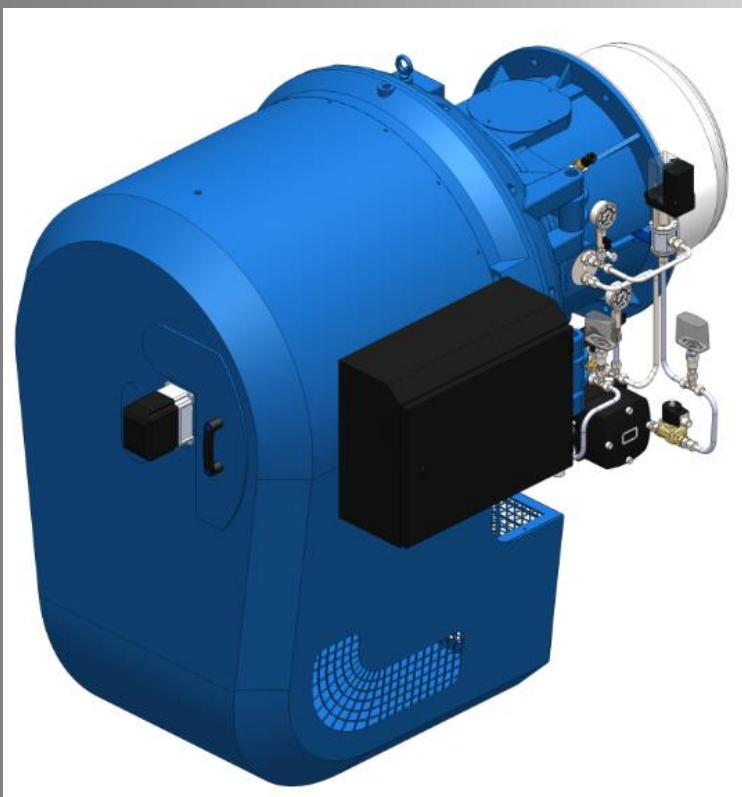
DATA SHEET

Model: TL6

Revision Date: November 2018

Output: 1800 – 14000 kW

Revision Number: DS.TL6.08



- ◆ All models approved to current British and European Standards.

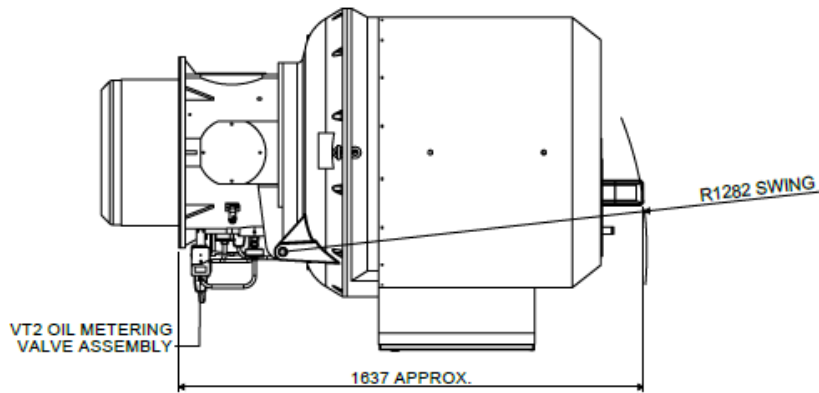


BURNER DIMENSIONS

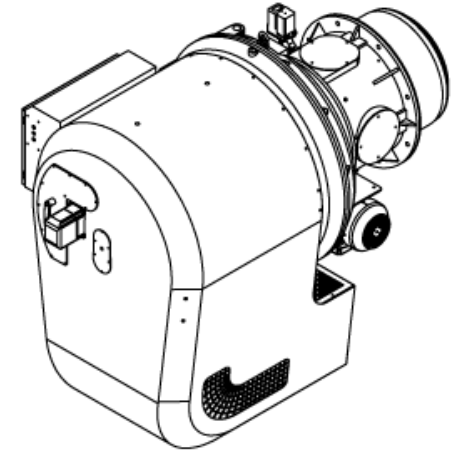
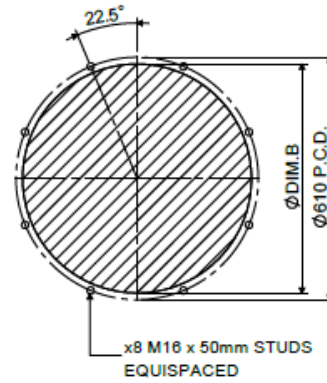
- Drawings shown on the following pages
- All dimensions in mm unless otherwise stated.
- The minimum standard dimension for 'PROJ' is 280mm and 430mm for multi-oil burners. However it can be varied to suit application, requirements should be stated when unit is ordered.
- The swing radius shown is the average; this can vary on non-standard burners.
- Burners supplied as Left hand hinge or Right hand hinge
- Please check the issue number to ensure validity.

ELECTRONIC MODULATION LHH

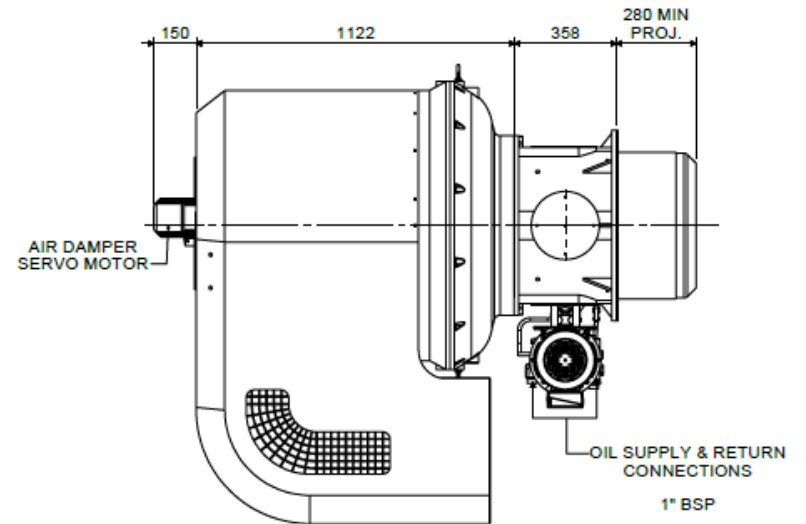
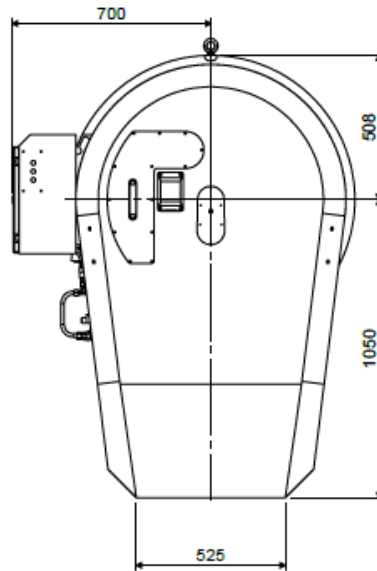
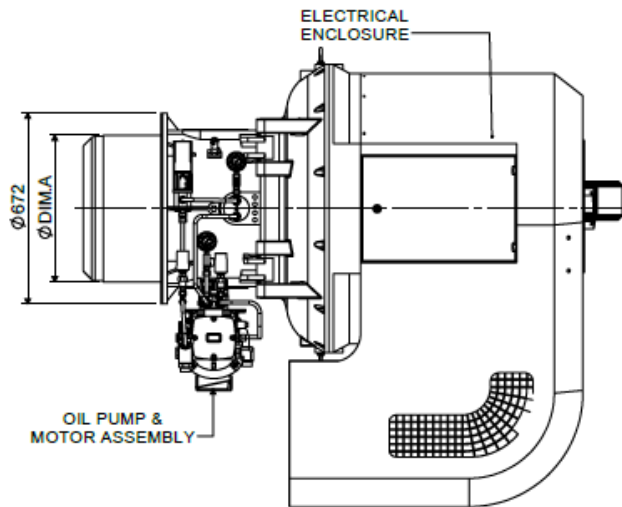
TL6.1200-1400 ELECTRONIC MODULATION BURNER - LHH



BOILER MOUNTING DETAILS

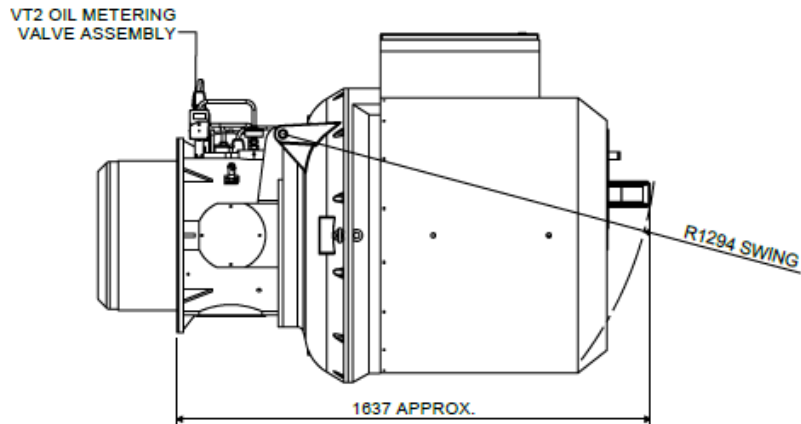


BURNER TYPE	DIM.A	DIM.B
TL6.1200	516	525
TL6.1400	566	576

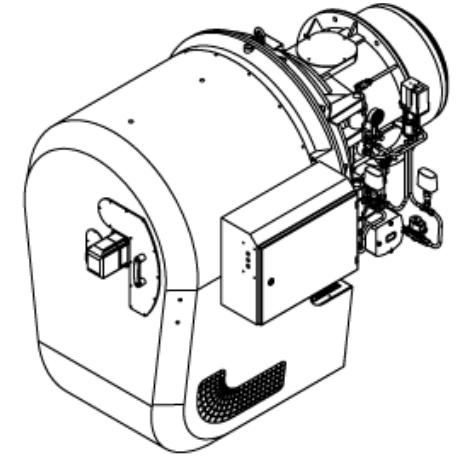
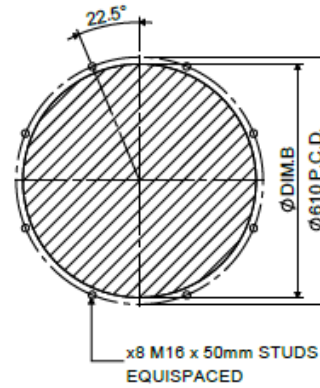


ELECTRONIC MODULATION RHH

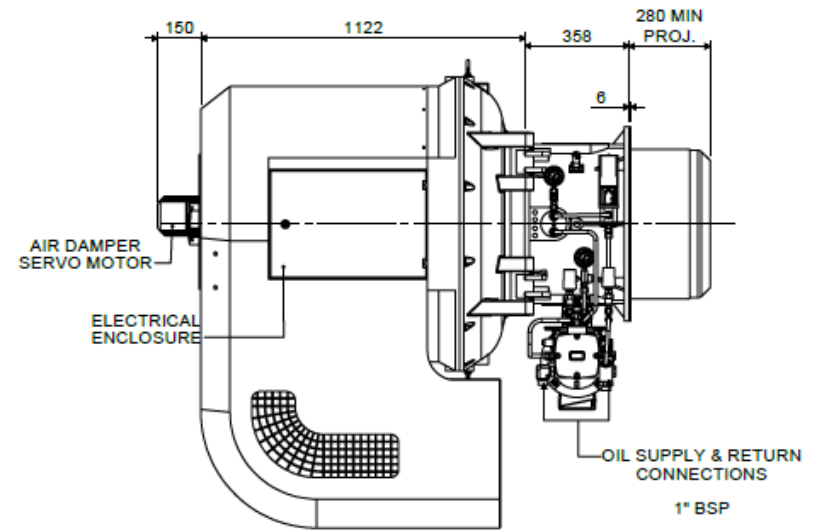
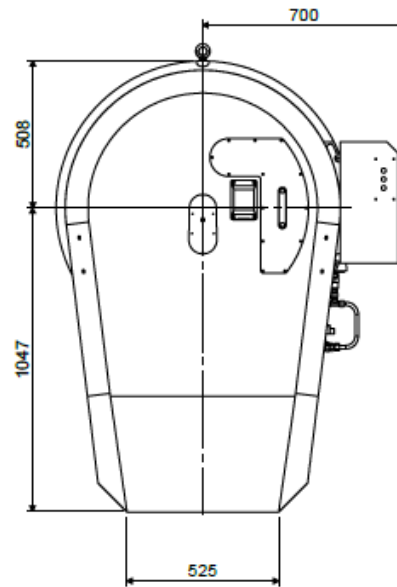
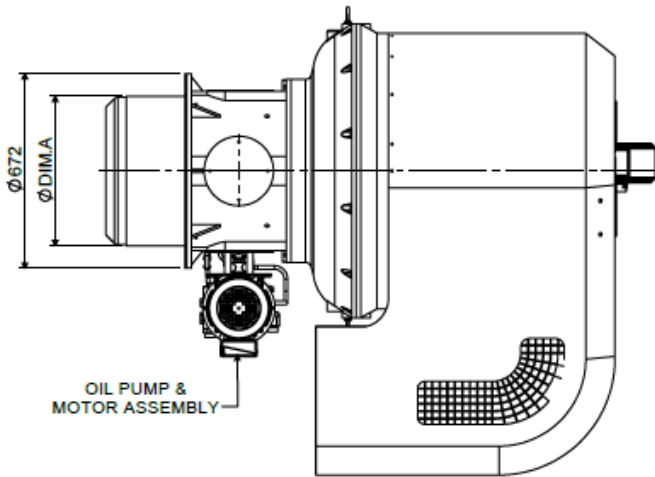
TL6.1200-1400 ELECTRONIC MODULATION BURNER - RHH



BOILER MOUNTING DETAILS

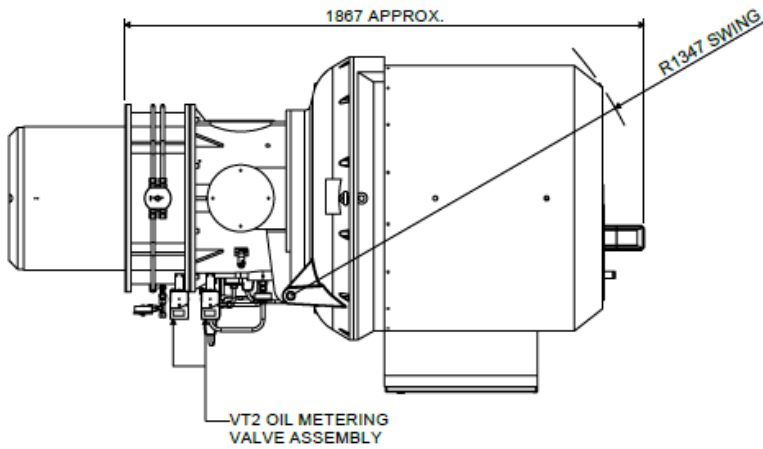


BURNER TYPE	DIM.A	DIM.B
TL6.1200	516	525
TL6.1400	566	576

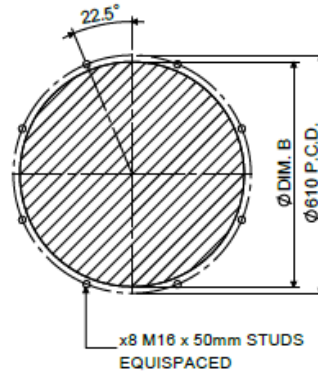


ELECTRONIC MODULATION LOW NOX LHH

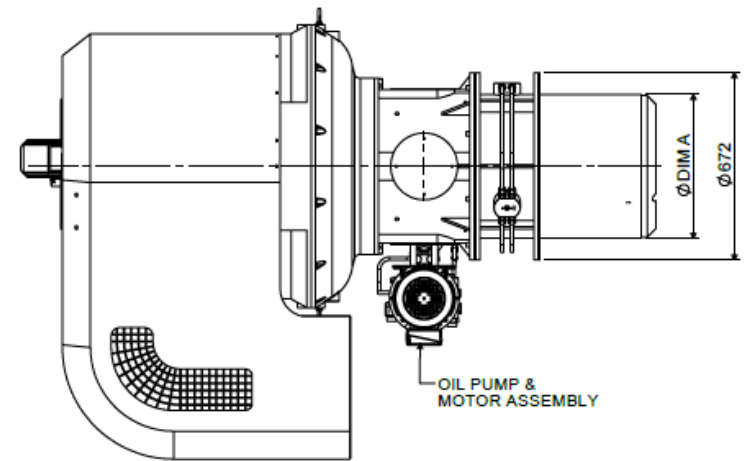
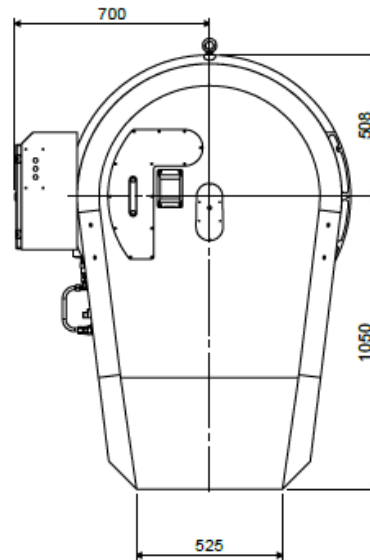
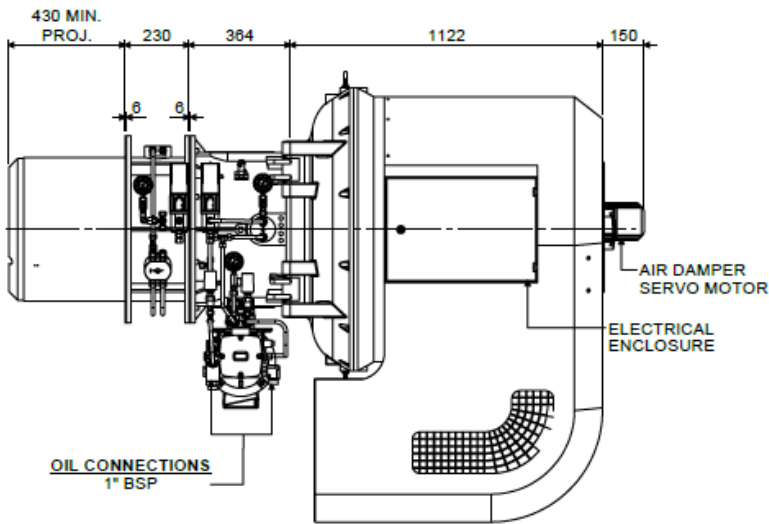
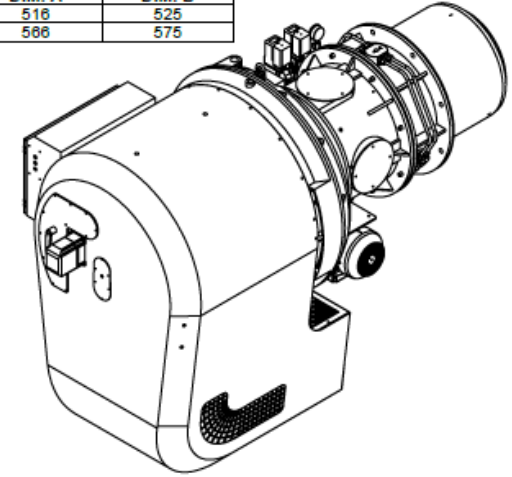
TL6.1200-1400 MUTLI-OIL ELECTRONIC MODULATION BURNER - LHH



BOILER MOUNTING DETAILS



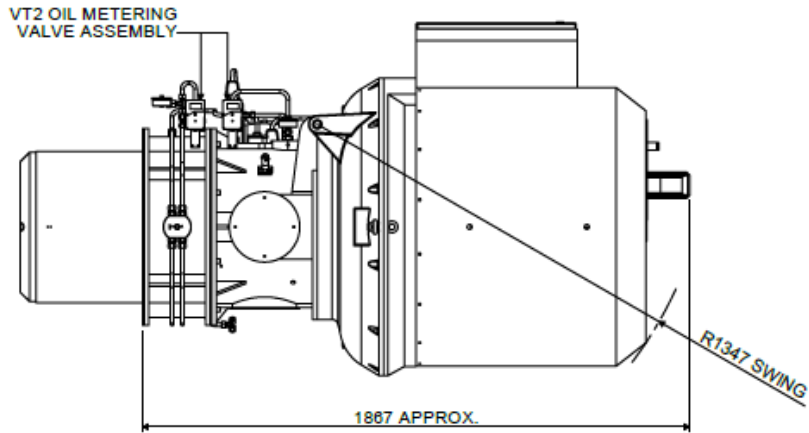
BURNER TYPE	DIM. A	DIM. B
TL6.1200	516	525
TL6.1400	568	575



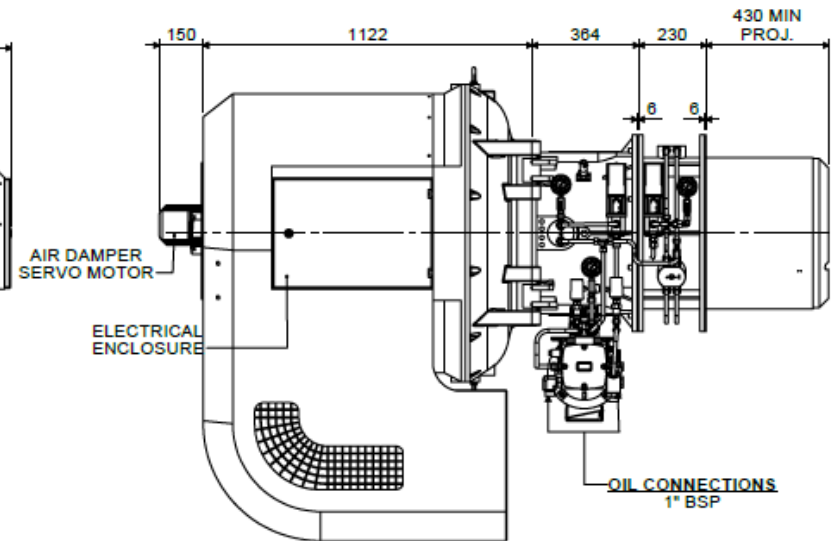
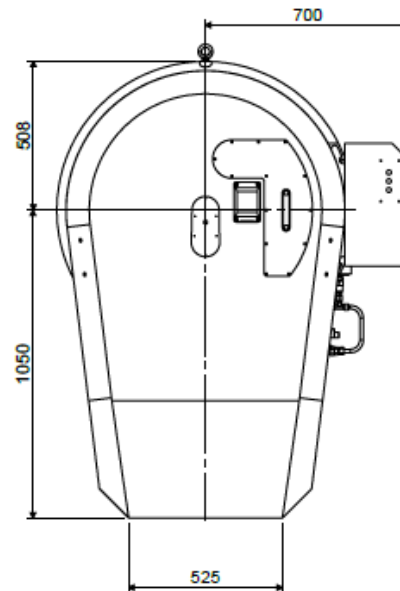
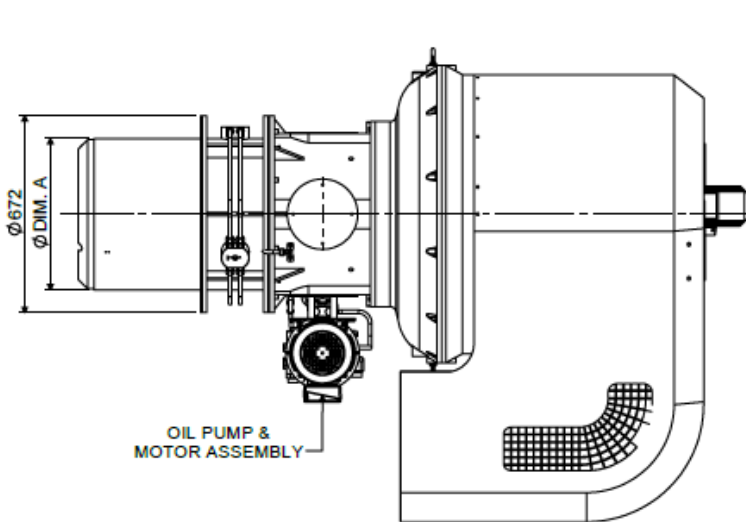
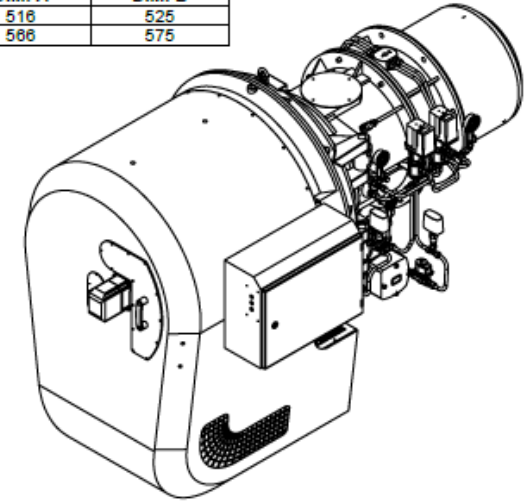
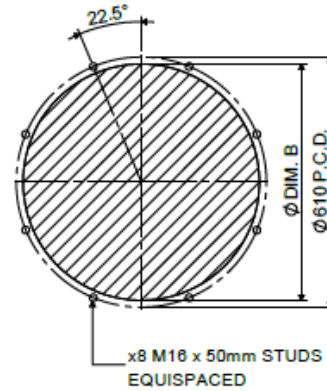
ELECTRONIC MODULATION LOW NOX RHH

TL6.1200-1400 MUTLI-OIL ELECTRONIC MODULATION BURNER - RHH

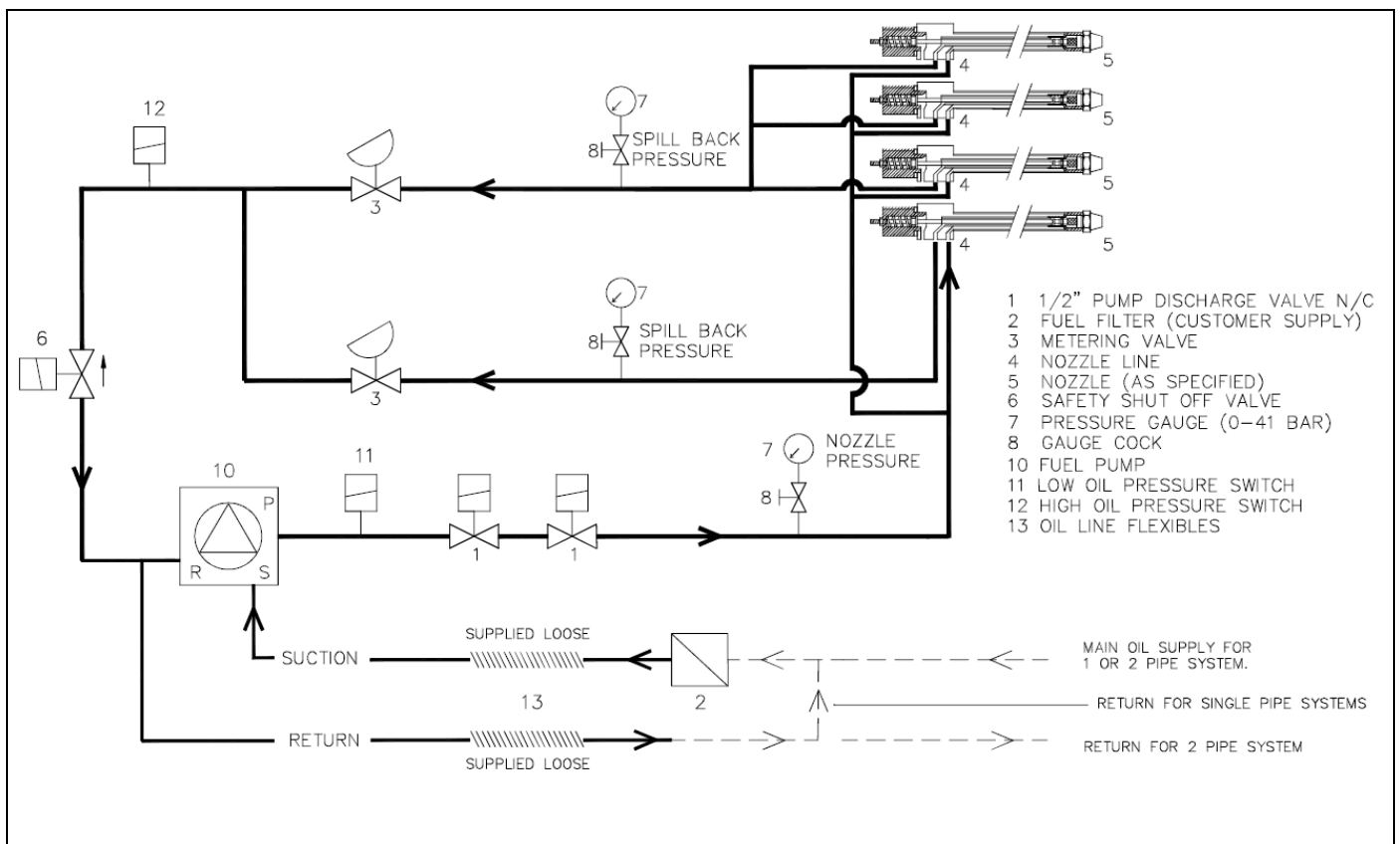
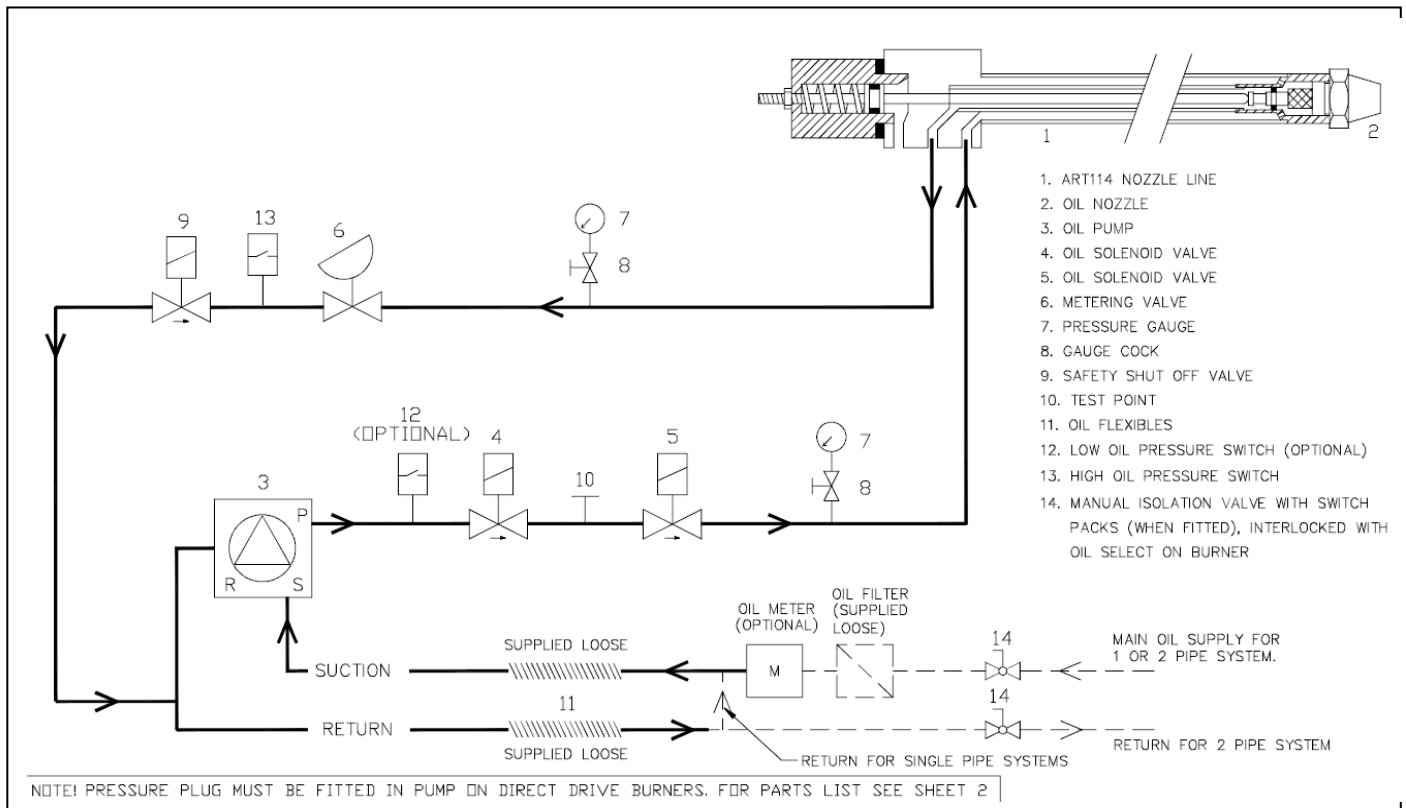
BURNER TYPE	DIM. A	DIM. B
TL6.1200	516	525
TL6.1400	566	575



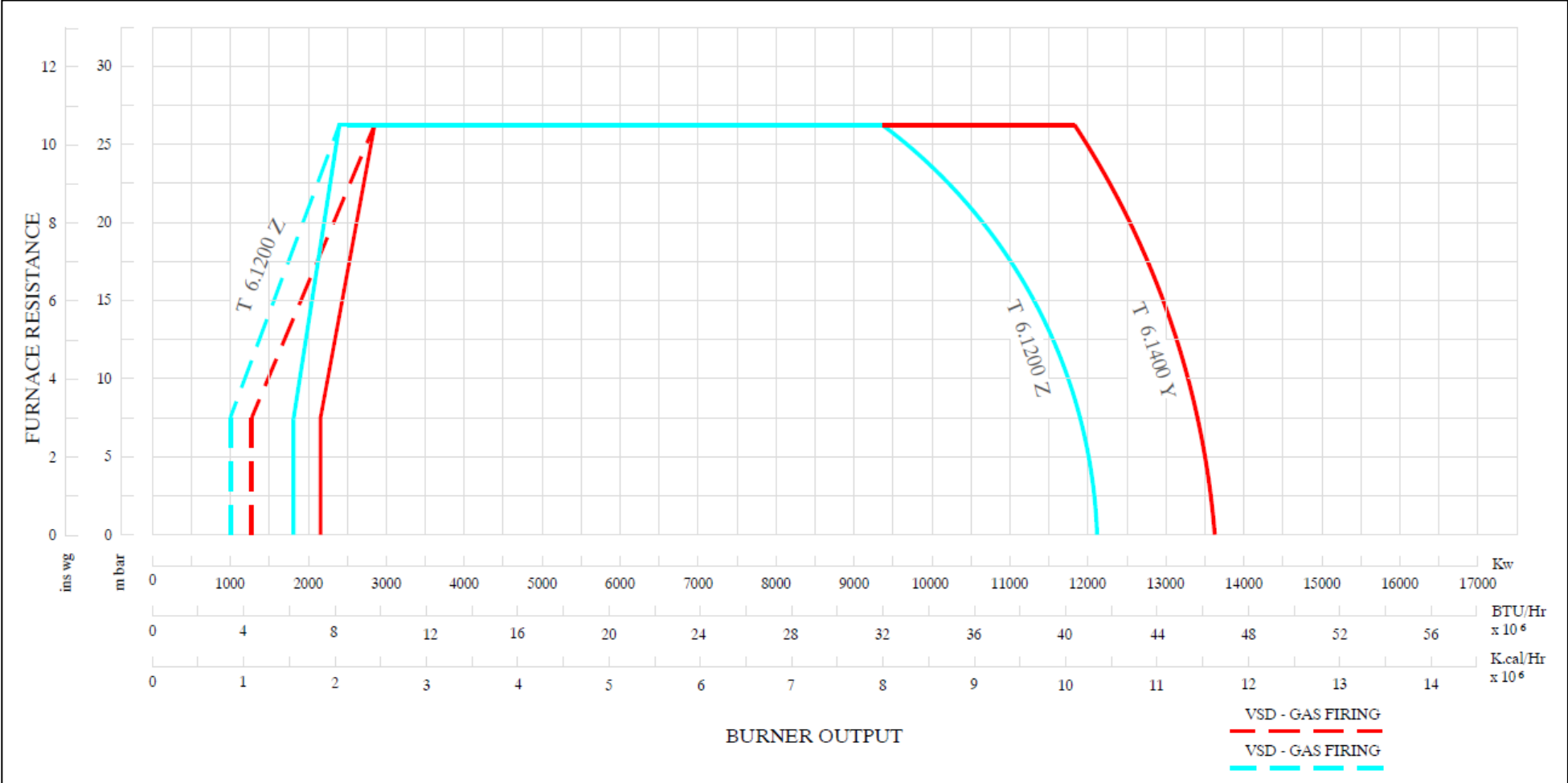
BOILER MOUNTING DETAILS



BURNER SCHEMATICS



BURNER RATING GRAPH



STANDARD SPECIFICATION DATA

BURNER TYPE	Firing Rate kW		FIRING MODE OPTIONS		Fan Motor kW	Pump Motor kW	Voltage	Hz	Ph	Running Current	Weight kg
	MIN	MAX	Mechanical Modulation	Electronic Modulation*							
TL6.1200Z	1800	12000		✓	28.5	5.5	380-420	50	3	56 A	700
TL6.1400Y	2200	14000		✓	37	5.5	380-420	50	3	68 A	720

* Fitted with a Ratiotronic 6000 system