



+44 (0)1706 649217



+44 (0)1706 655512

[www.dunphy.co.uk](http://www.dunphy.co.uk)

## DATA SHEET

**Model: TL4****Revision Date: November 2018****Output: 600 – 6200 kW****Revision Number: DS.TL4.15**

- ◆ All models approved to current British and European Standards.



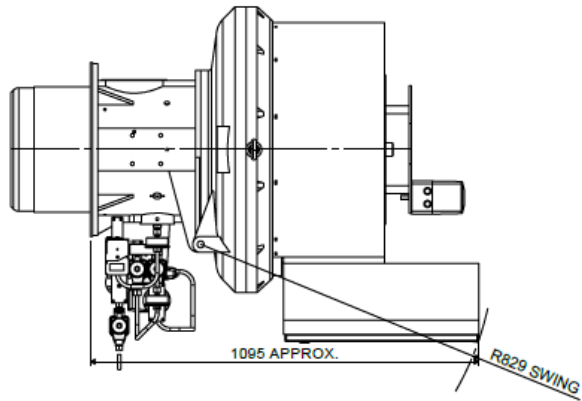
## BURNER DIMENSIONS

- Drawings shown on the following pages
- All dimensions in mm unless otherwise stated.
- The minimum standard dimension for 'PROJ' is 230mm. However it can be varied to suit application, requirements should be stated when unit is ordered.
- The swing radius shown is the average; this can vary on non-standard burners.
- Burners supplied as Left hand hinge or Right hand hinge
- Please check the issue number to ensure validity.

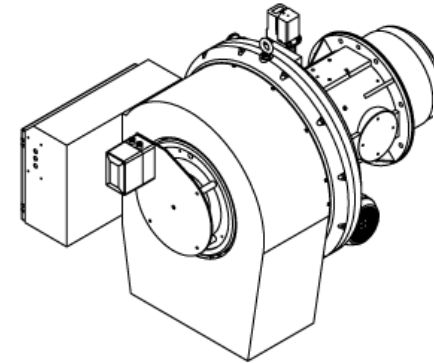
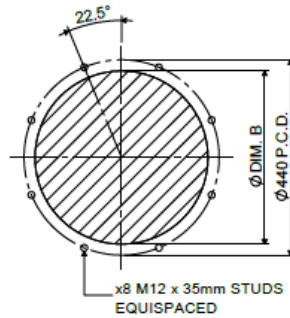
# TL4.450-550 LHH ELECTRONIC MODULATION

**TL4.450-4.550 ELECTRONIC MODULATION BURNER - LHH**

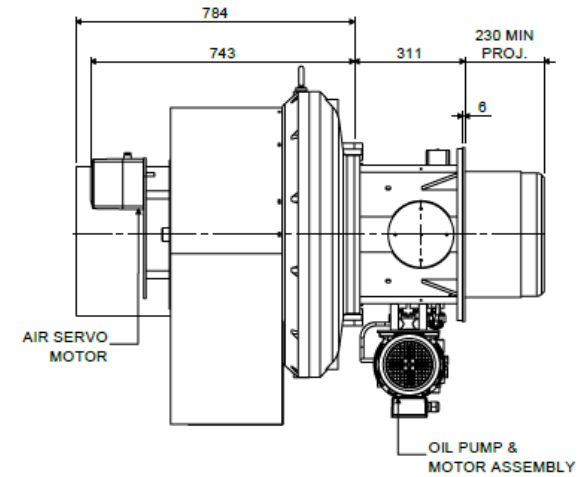
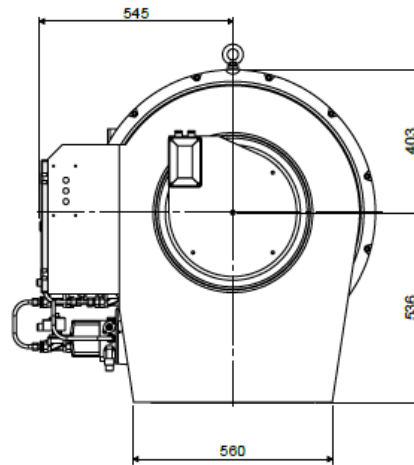
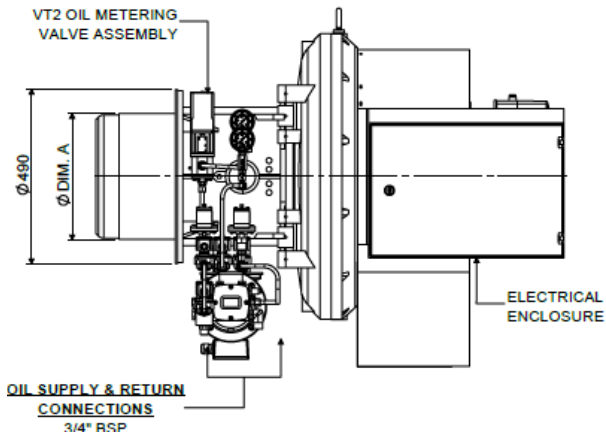
IF IN DOUBT #



**BOILER MOUNTING DETAILS**

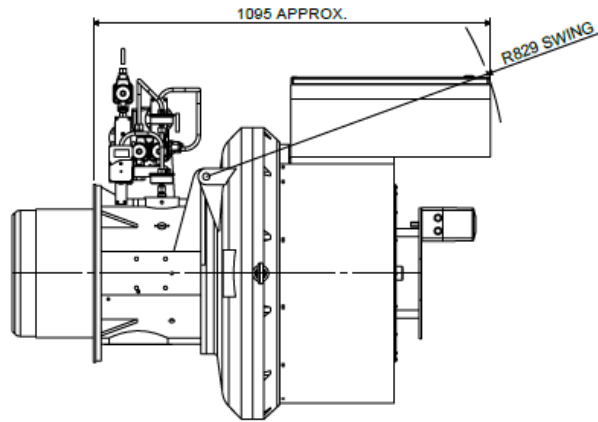


BURNER TYPE	DIM.A	DIM.B
TL 4.450 Z	Ø355	Ø382
TL 4.550 Y	Ø400	Ø410

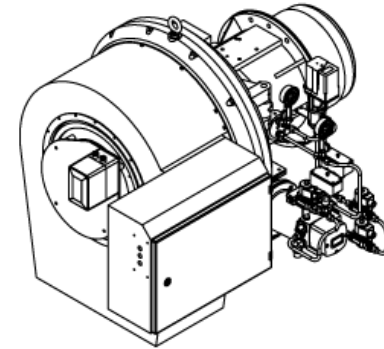
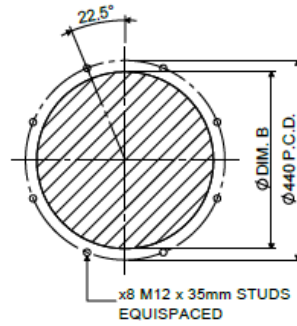


# TL4.450-550 RHH ELECTRONIC MODULATION

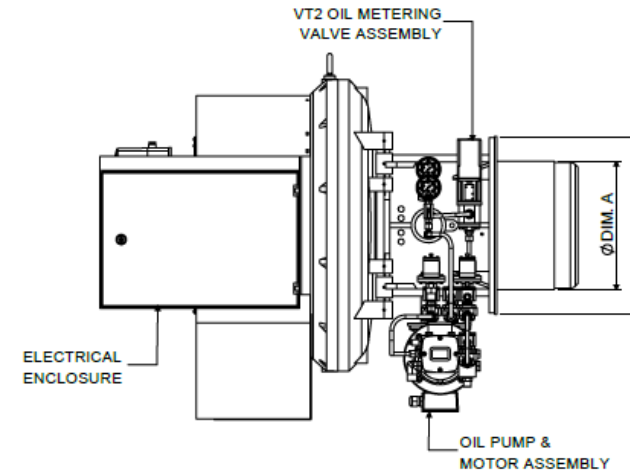
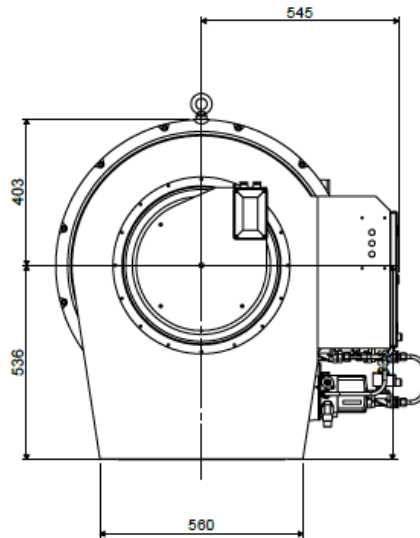
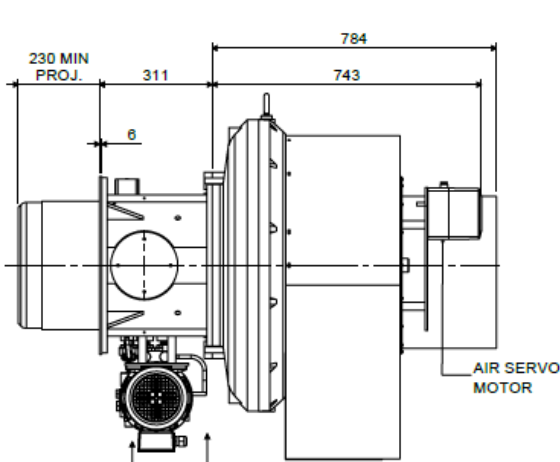
## TL4.450-4.550 ELECTRONIC MODULATION BURNER - RHH



### BOILER MOUNTING DETAILS

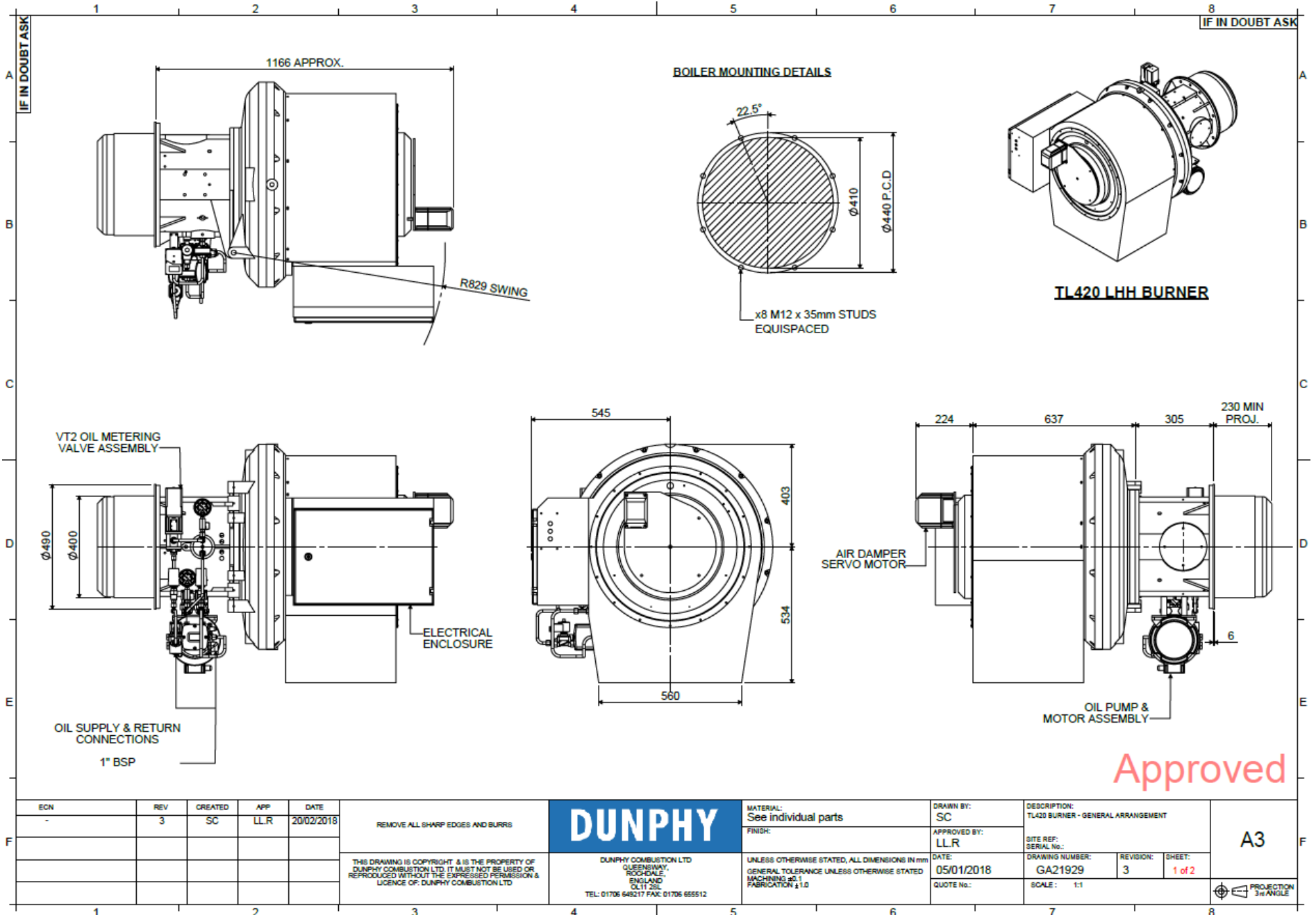


BURNER TYPE	DIM.A	DIM.B
TL 4.450 Z	Ø355	Ø382
TL 4.550 Y	Ø400	Ø410



OIL SUPPLY & RETURN CONNECTIONS  
3/4" BSP

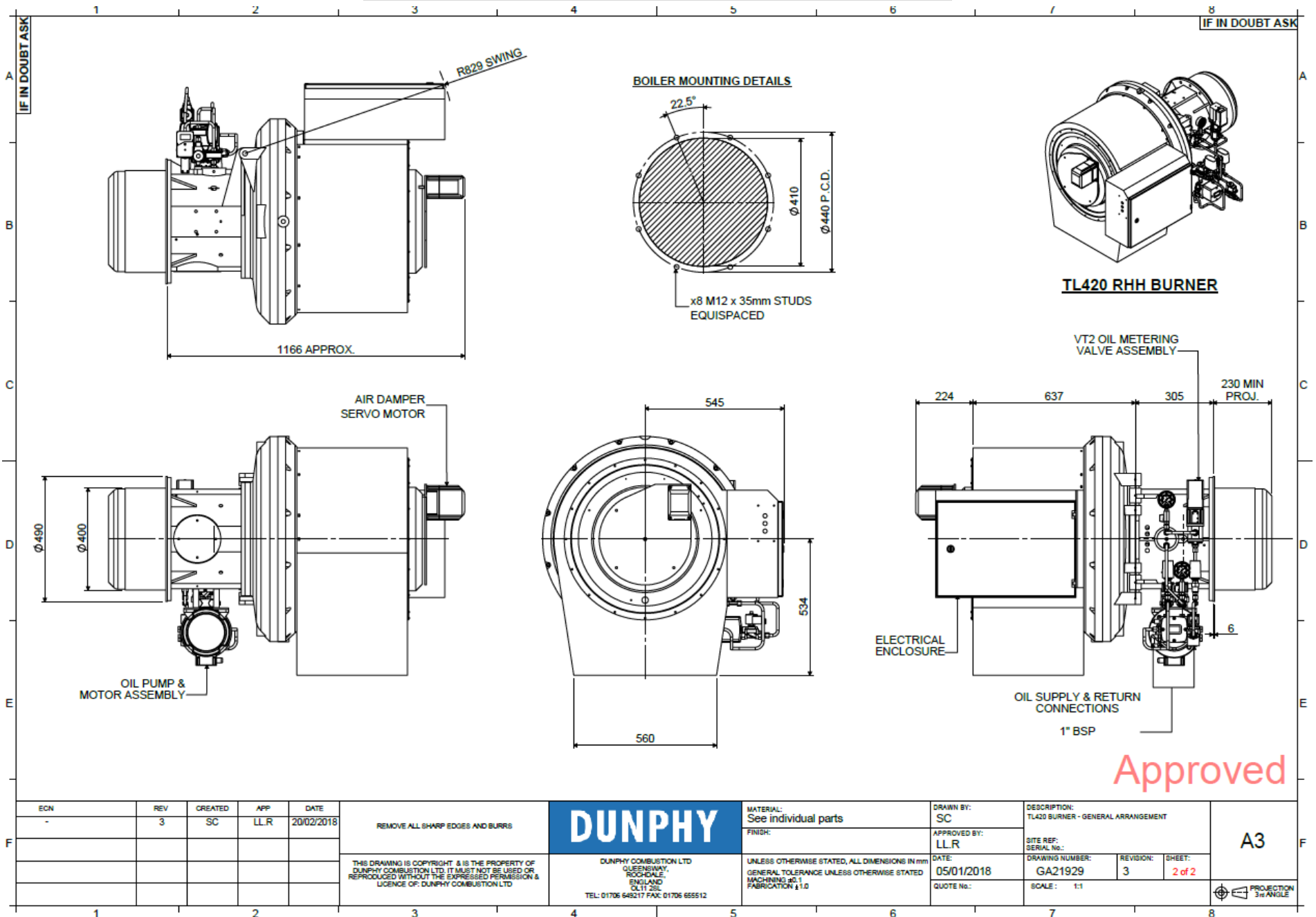
# TL4.650 LHH ELECTRONIC MODULATION



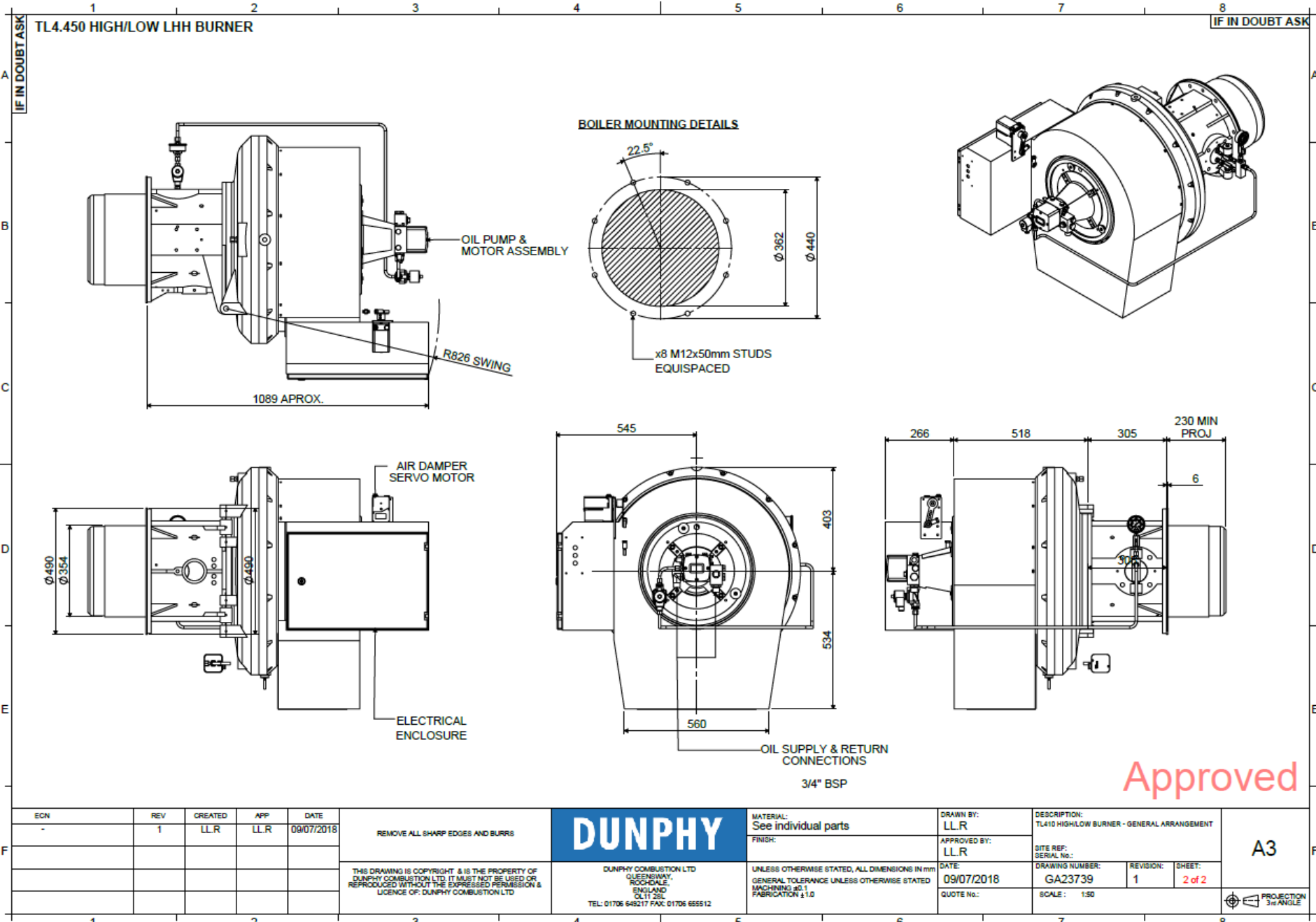
Approved

ECN	REV	CREATED	APP	DATE	REMOVE ALL SHARP EDGES AND BURRS	<b>DUNPHY</b>	MATERIAL:	DRAWN BY:	DESCRIPTION: TL420 BURNER - GENERAL ARRANGEMENT	A3	
-	3	SC	LLR	20/02/2018			See individual parts	SC			SITE REF: SERIAL No.:
					THIS DRAWING IS COPYRIGHT & IS THE PROPERTY OF DUNPHY COMBUSTION LTD. IT MUST NOT BE USED OR REPRODUCED WITHOUT THE EXPRESSED PERMISSION & LICENCE OF DUNPHY COMBUSTION LTD	DUNPHY COMBUSTION LTD QUEENSWAY, ROCHEDALE, ENGLAND OL11 2SL TEL: 01706 648217 FAX: 01706 655512	FINISH:	APPROVED BY:	DRAWING NUMBER:	REVISION:	SHEET:
							UNLESS OTHERWISE STATED, ALL DIMENSIONS IN mm GENERAL TOLERANCE UNLESS OTHERWISE STATED MACHINING ±0.1 FABRICATION ±1.0	LLR	05/01/2018	GA21929	3
								QUOTE No.:	SCALE: 1:1		PROJECTION 3rd ANGLE

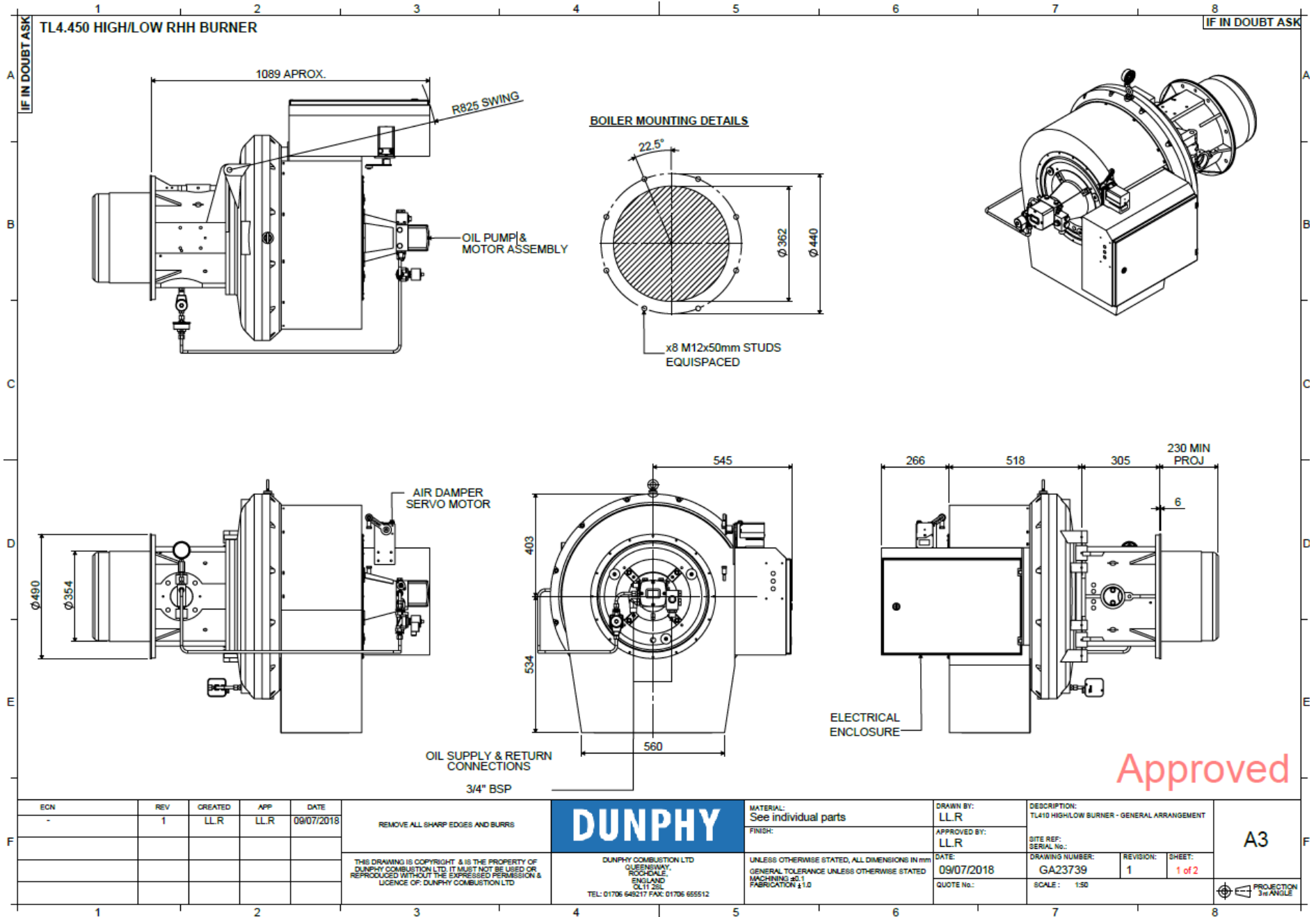
# TL4.650 RHH ELECTRONIC MODULATION



# TL4.450 LHH HIGH/LOW

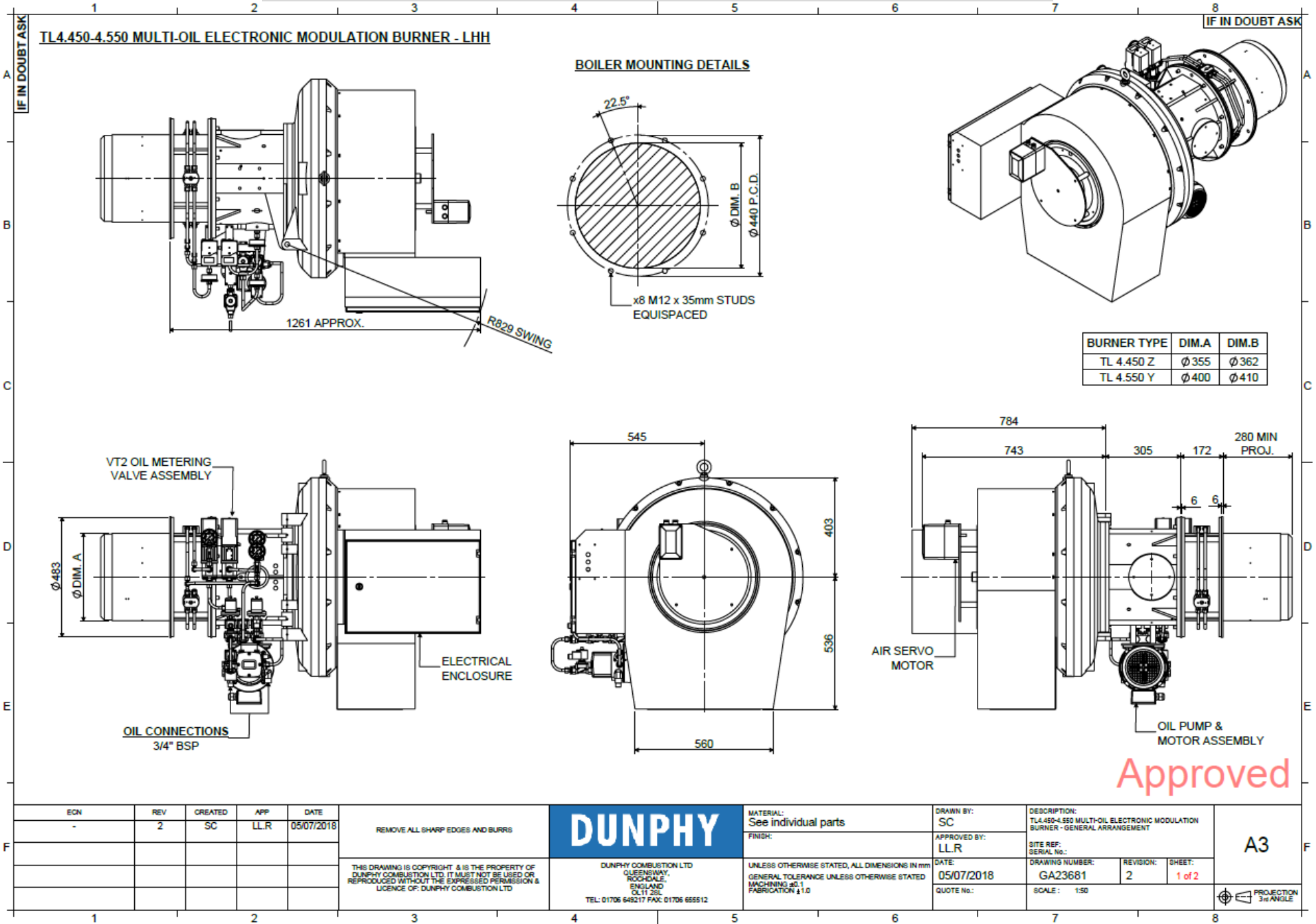


# TL4.450 RHH HIGH/LOW





# TL4.450-550 ELECTRONIC MODULATION LOW NOX LHH



BURNER TYPE	DIM.A	DIM.B
TL 4.450 Z	∅ 355	∅ 362
TL 4.550 Y	∅ 400	∅ 410

Approved

ECN	REV	CREATED	APP	DATE
-	2	SC	LLR	05/07/2018

REMOVE ALL SHARP EDGES AND BURRS

THIS DRAWING IS COPYRIGHT & IS THE PROPERTY OF DUNPHY COMBUSTION LTD. IT MUST NOT BE USED OR REPRODUCED WITHOUT THE EXPRESSED PERMISSION & LICENCE OF: DUNPHY COMBUSTION LTD

**DUNPHY**

DUNPHY COMBUSTION LTD  
 QUEENSWAY,  
 ROCHEDALE,  
 ENGLAND  
 OL11 2SL  
 TEL: 01706 648217 FAX: 01706 655512

MATERIAL: See individual parts

FINISH:

UNLESS OTHERWISE STATED, ALL DIMENSIONS IN mm  
 GENERAL TOLERANCE UNLESS OTHERWISE STATED  
 MACHINING ±0.1  
 FABRICATION ±1.0

DRAWN BY: SC

APPROVED BY: LLR

DATE: 05/07/2018

QUOTE No.:

DESCRIPTION: TL4.450-4.550 MULTI-OIL ELECTRONIC MODULATION BURNER - GENERAL ARRANGEMENT

SITE REF. SERIAL No.:

DRAWING NUMBER: GA23681

REVISION: 2

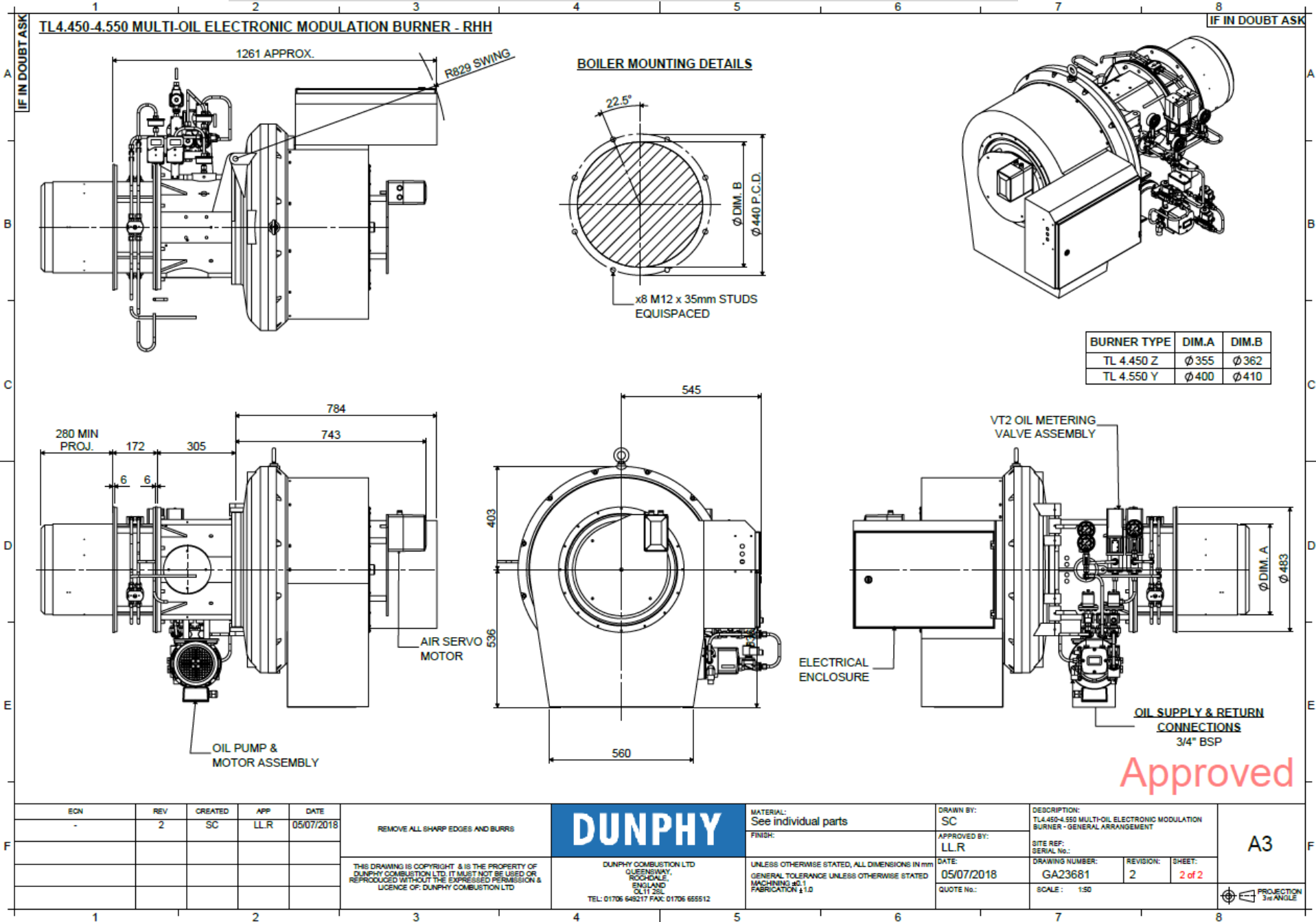
SHEET: 1 of 2

SCALE: 1:50

A3

PROJECTION 3rd ANGLE

# TL4.450-550 ELECTRONIC MODULATION LOW NOX LHH

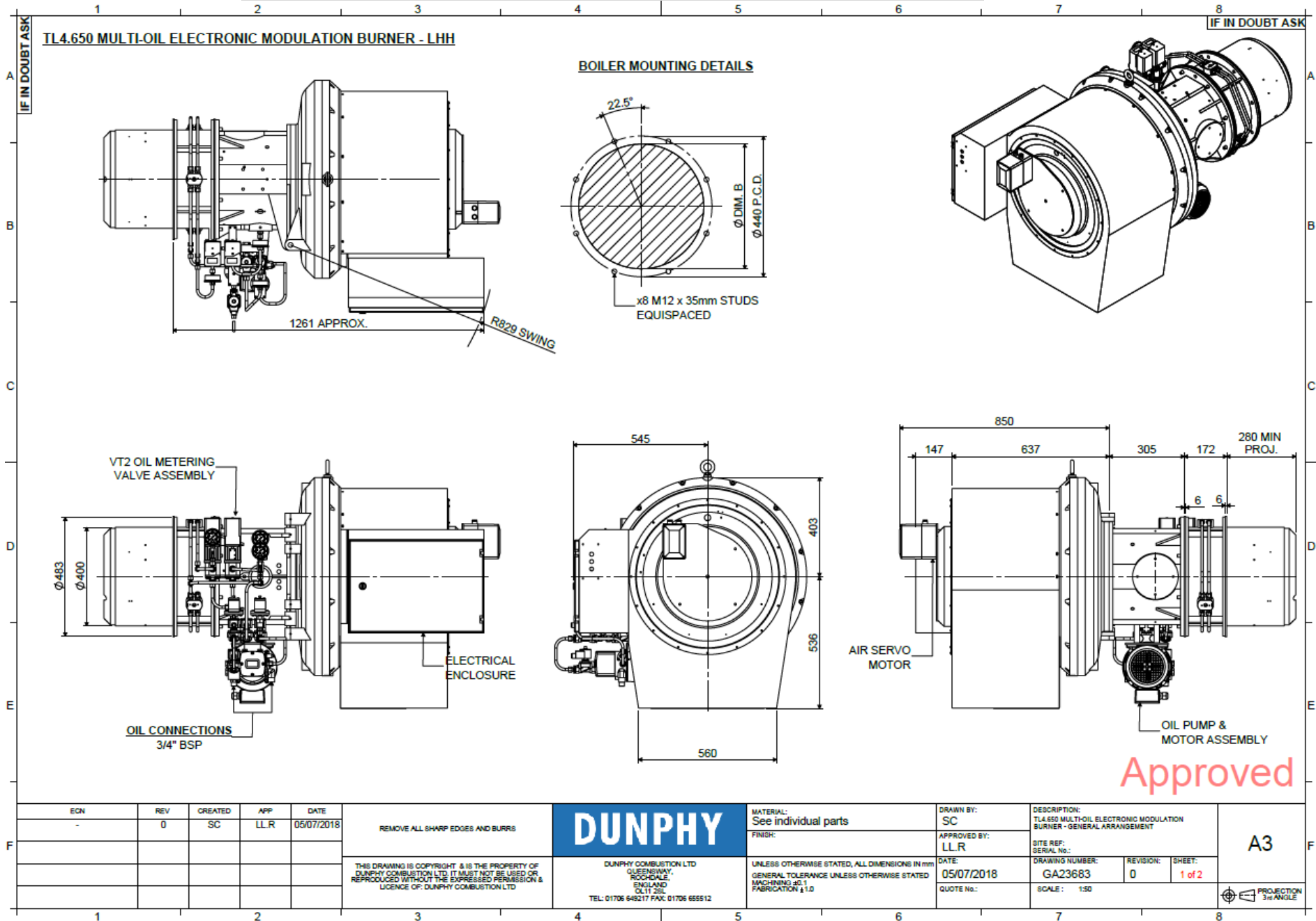


BURNER TYPE	DIM.A	DIM.B
TL 4.450 Z	Ø 355	Ø 362
TL 4.550 Y	Ø 400	Ø 410

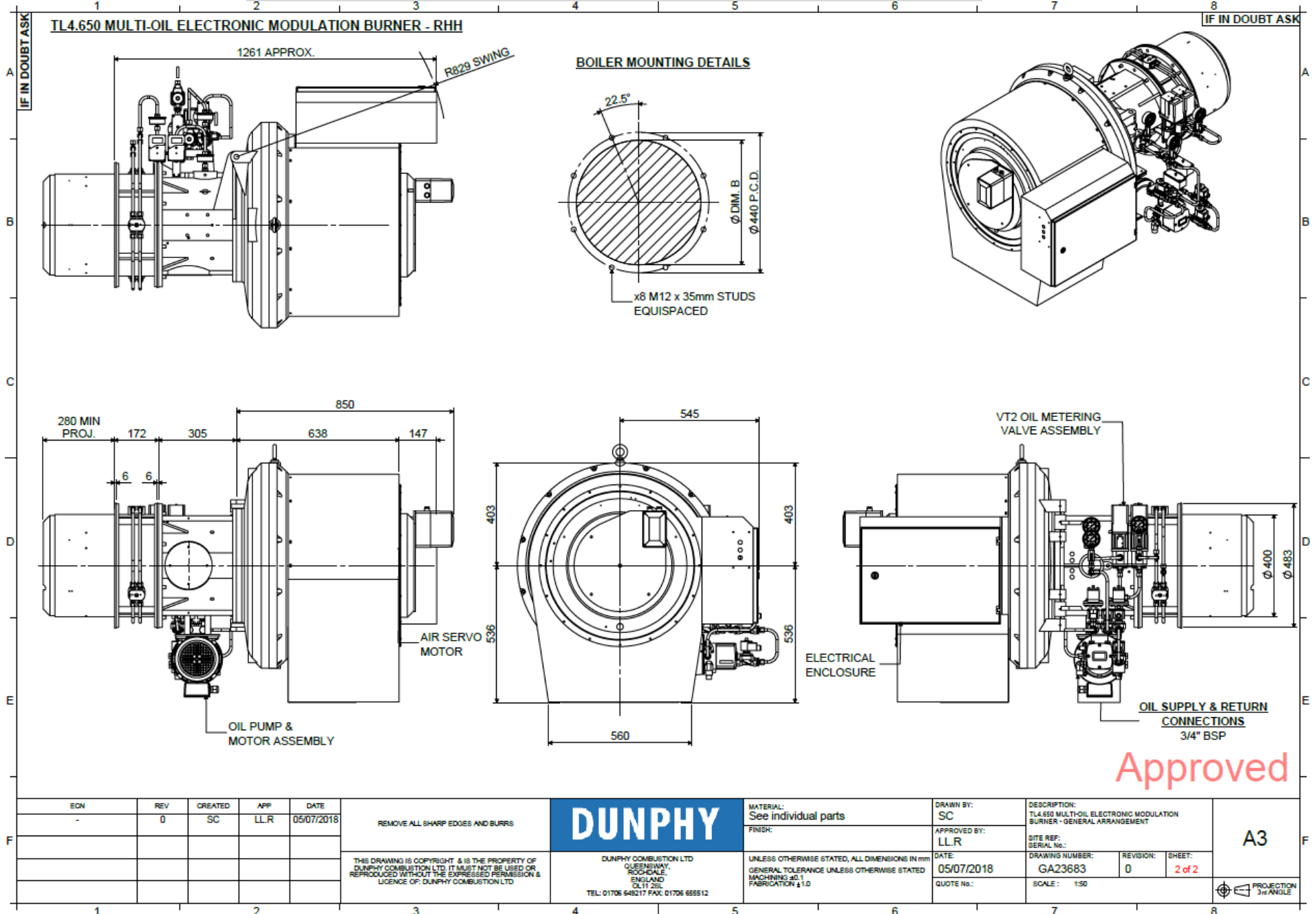
Approved

EGN	REV	CREATED	APP	DATE	REMOVE ALL SHARP EDGES AND BURRS	<b>DUNPHY</b>	MATERIAL:	DRAWN BY:	DESCRIPTION: TL4.450-550 MULTI-OIL ELECTRONIC MODULATION BURNER - GENERAL ARRANGEMENT		
-	2	SC	LL.R	05/07/2018			See individual parts	SC			
THIS DRAWING IS COPYRIGHT & IS THE PROPERTY OF DUNPHY COMBUSTION LTD. IT MUST NOT BE USED OR REPRODUCED WITHOUT THE EXPRESSED PERMISSION & LICENCE OF DUNPHY COMBUSTION LTD						DUNPHY COMBUSTION LTD QUEENSWAY, ROCKDALE, ENGLAND OL11 2SL TEL: 01706 648217 FAX: 01706 655512	FINISH:	APPROVED BY:	SITE REF:		
							UNLESS OTHERWISE STATED, ALL DIMENSIONS IN mm / GENERAL TOLERANCE UNLESS OTHERWISE STATED (MACHINING ±0.1 FABRICATION ±1.0)	LLR	GA23681	SERIAL NO.:	
								DATE:	DRAWING NUMBER:	REVISION:	SHEET:
								05/07/2018	GA23681	2	2 of 2
								QUOTE No.:	SCALE:	PROJECTION 3rd ANGLE	
									1:50		

# TL4.650 ELECTRONIC MODULATION LOW NOX LHH

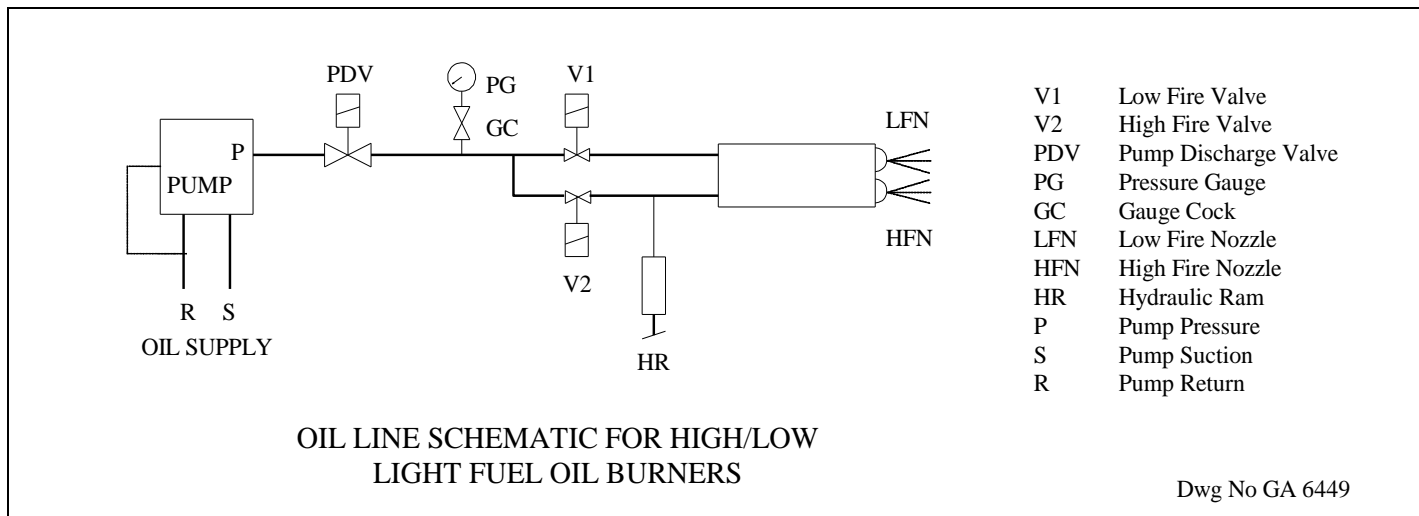


# TL4.650 ELECTRONIC MODULATION LOW NOX RHH

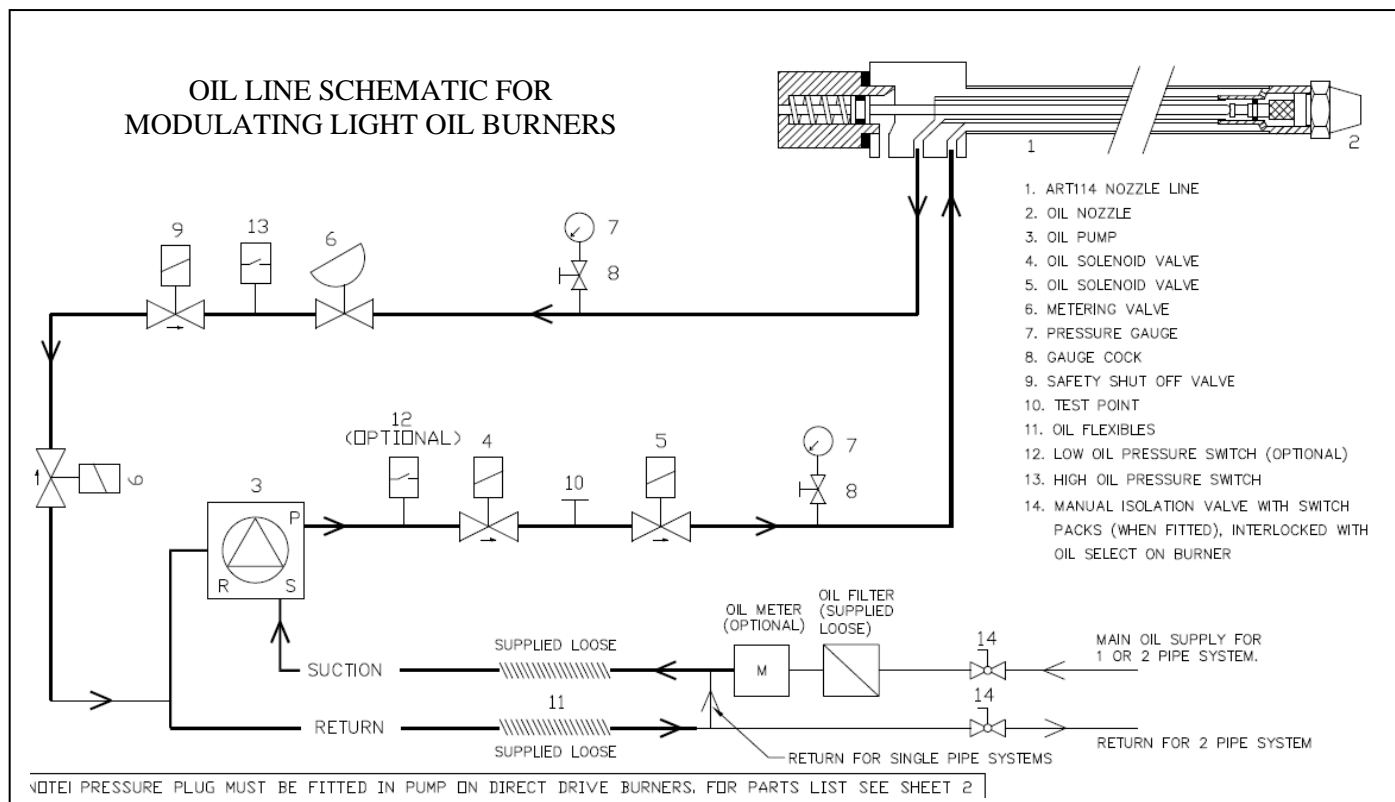


## BURNER RATING GRAPH & SCHEMATICS

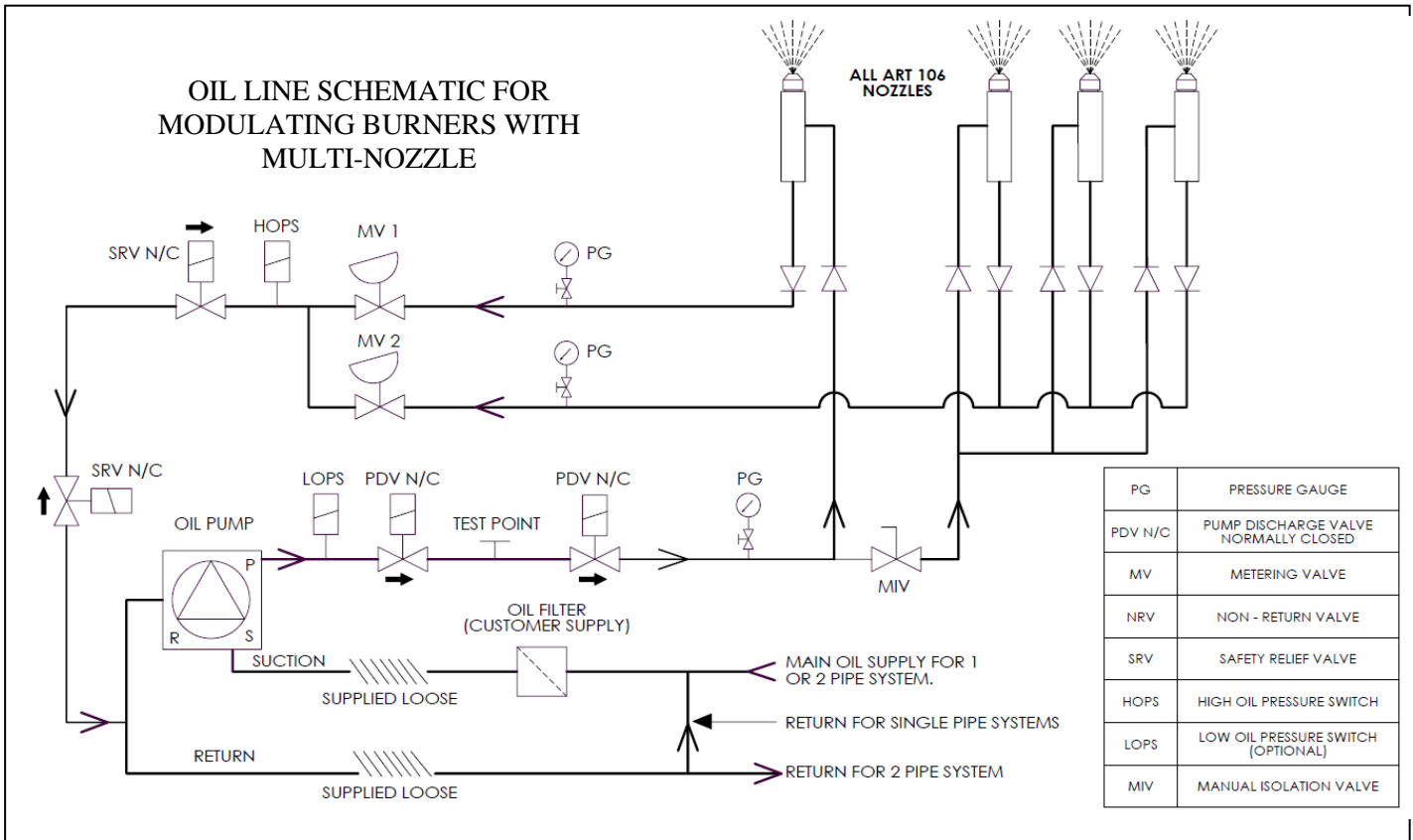
### TYPICAL SCHEMATIC FOR HIGH/LOW LIGHT OIL BURNERS



### TYPICAL SCHEMATIC FOR MODULATING LIGHT OIL BURNERS



# TYPICAL SCHEMATIC FOR MODULATING MULTI NOZZLE SYSTEM



## STANDARD SPECIFICATION DATA

BURNER TYPE	Firing Rate kW		Oil Consumption (kg/hr)*1		FIRING MODE OPTIONS		Fan Motor kW	Pump Motor kW	Voltage	Hz	Ph	Running Current	Starting Current (without inverter)	Weight (kg)
	MIN	MAX	MIN	MAX	High / Low	Electronic Modulation *2								
TL4.450 Z	600	4500	48	357	✓	✓	7.5	1.1	380-420	50	3	23 A	48 A	220
TL4.550 Y	800	5300	64	421		✓	11.0	2.2	380-420	50	3	32 A	64 A	229
TL4.650 Y	1200	6200	95	492		✓	15.0	2.2	380-420	50	3	39 A	88 A	232

\*1 – Based on Gas Oil C.V 12.6kW/kg

\*2 – Fitted with a Ratiotronic 6000 system

