



+44 (0)1706 649217



+44 (0)1706 655512



www.dunphy.co.uk

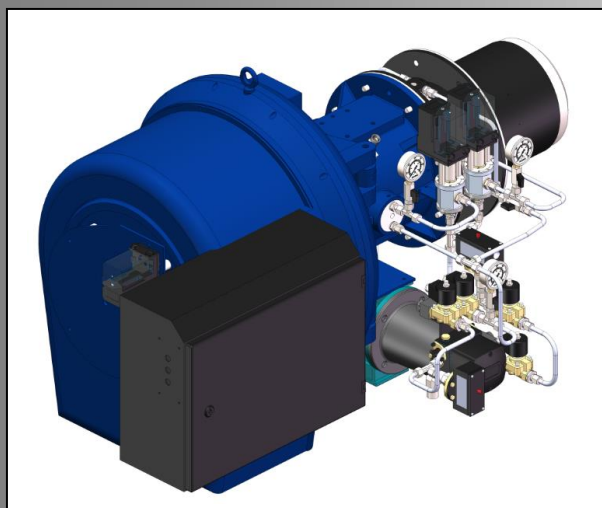
DATA SHEET

Model: TL3

Revision Date: November 2018

Output: 450 – 2950 kW

Revision Number: DS.TL3.18



◆ All models approved to current British and European Standards.



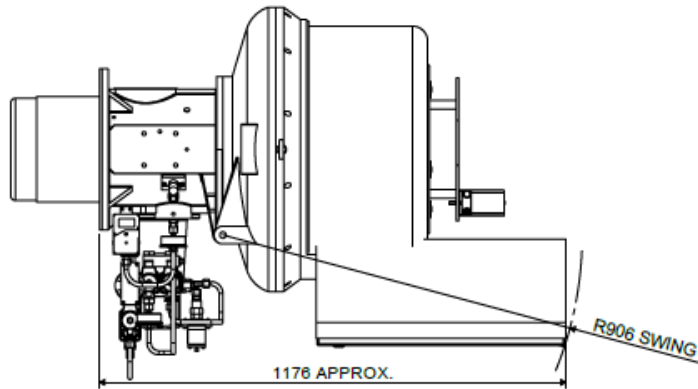
FM 24868

BURNER DIMENSIONS

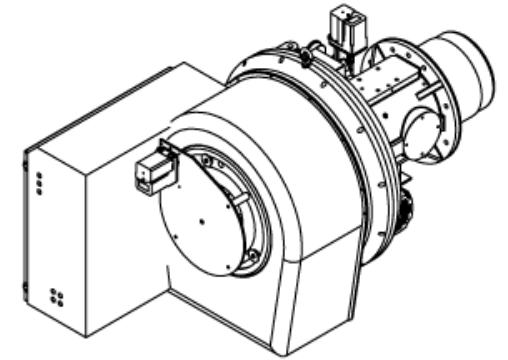
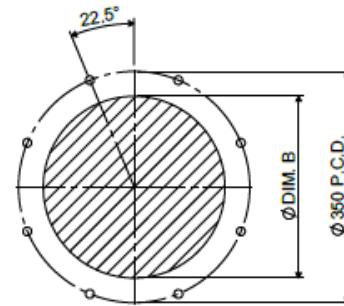
- Drawings shown on the following pages
- All dimensions in mm unless otherwise stated.
- The minimum standard dimension for 'PROJ' is 230mm and 280mm for multi-oil burners. However it can be varied to suit application, requirements should be stated when unit is ordered.
- The swing radius shown is the average; this can vary on non-standard burners.
- Burners supplied as Left hand hinge or Right hand hinge
- Please check the issue number to ensure validity.

ELECTRONIC MODULATION LHH

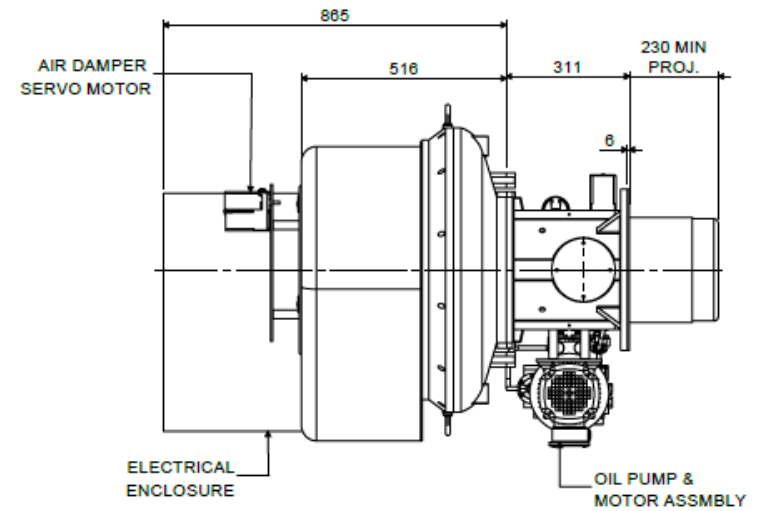
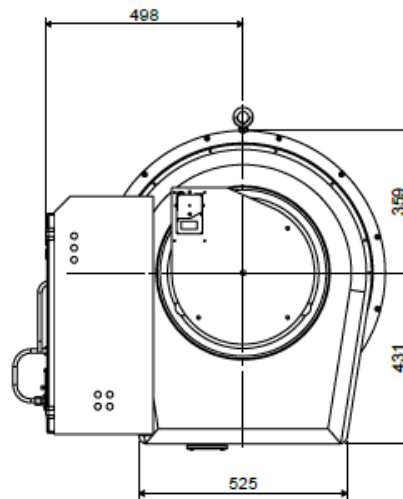
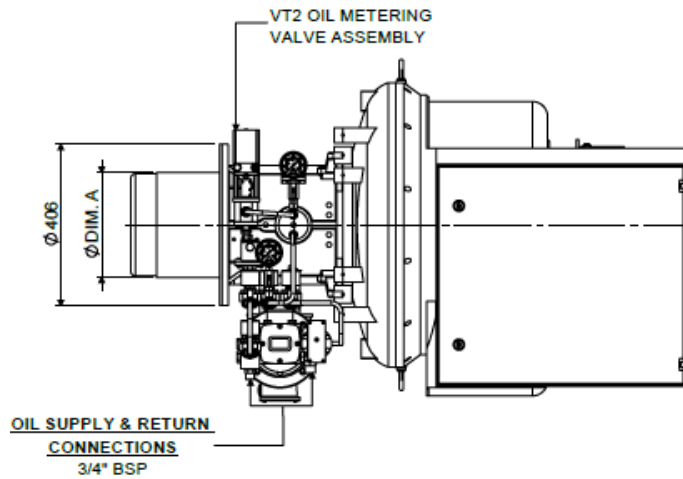
TL3 ELECTRONIC MODULATION BURNER - LHH



BOILER MOUNTING DETAIL

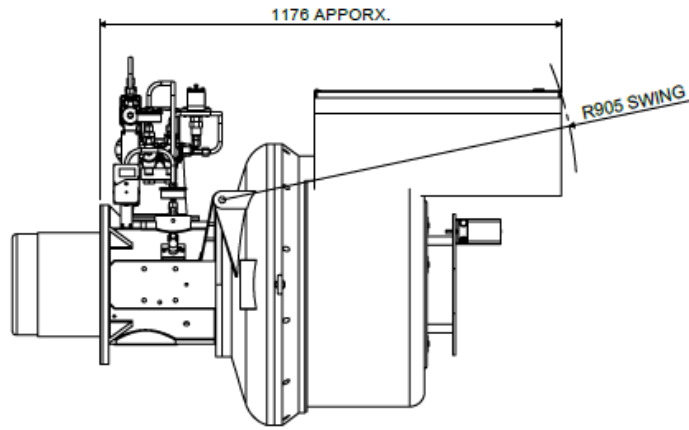


BURNER TYPE	DIM. A	DIM. B
TL 3.200 Z	Ø266	Ø275
TL 3.220 Z	Ø266	Ø275
TL 3.290 Y	Ø292	Ø310

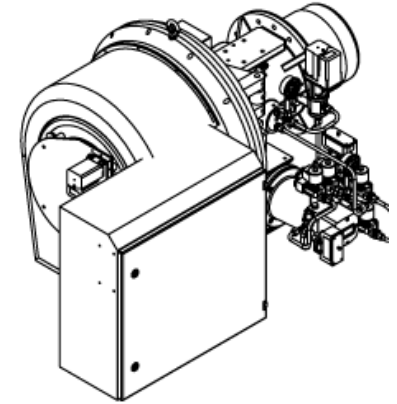
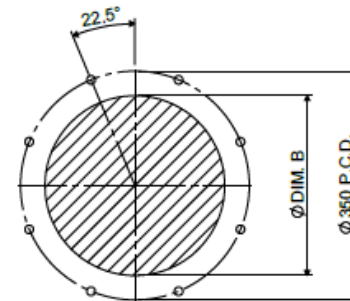


ELECTRONIC MODULATION RHH

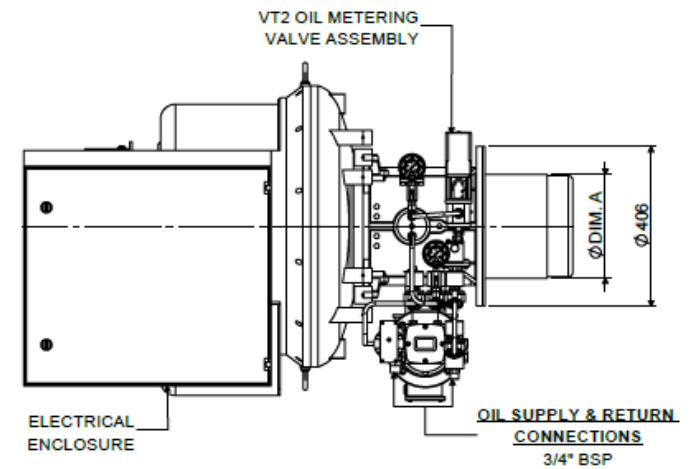
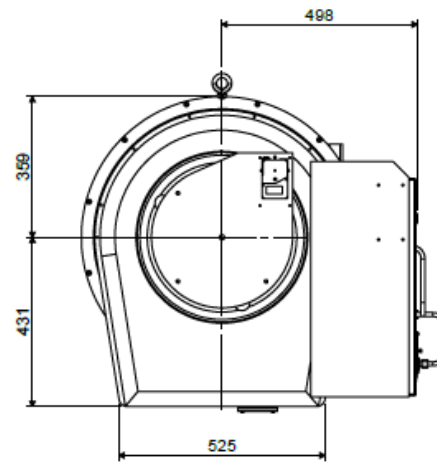
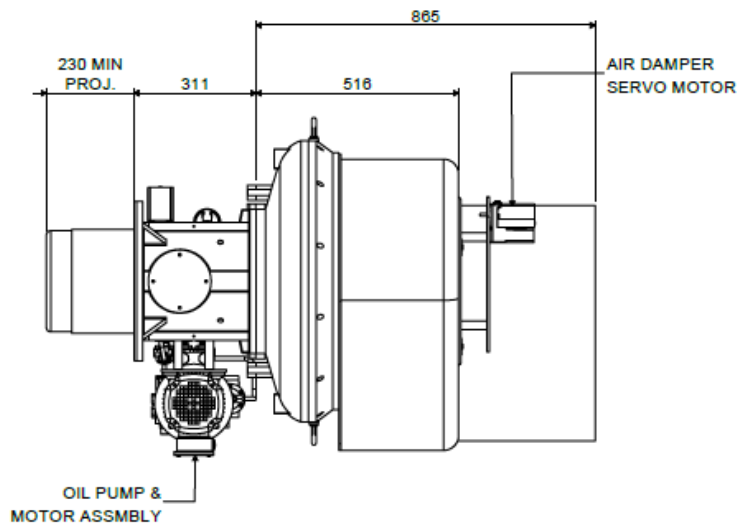
TL3 ELECTRONIC MODULATION BURNER - RHH



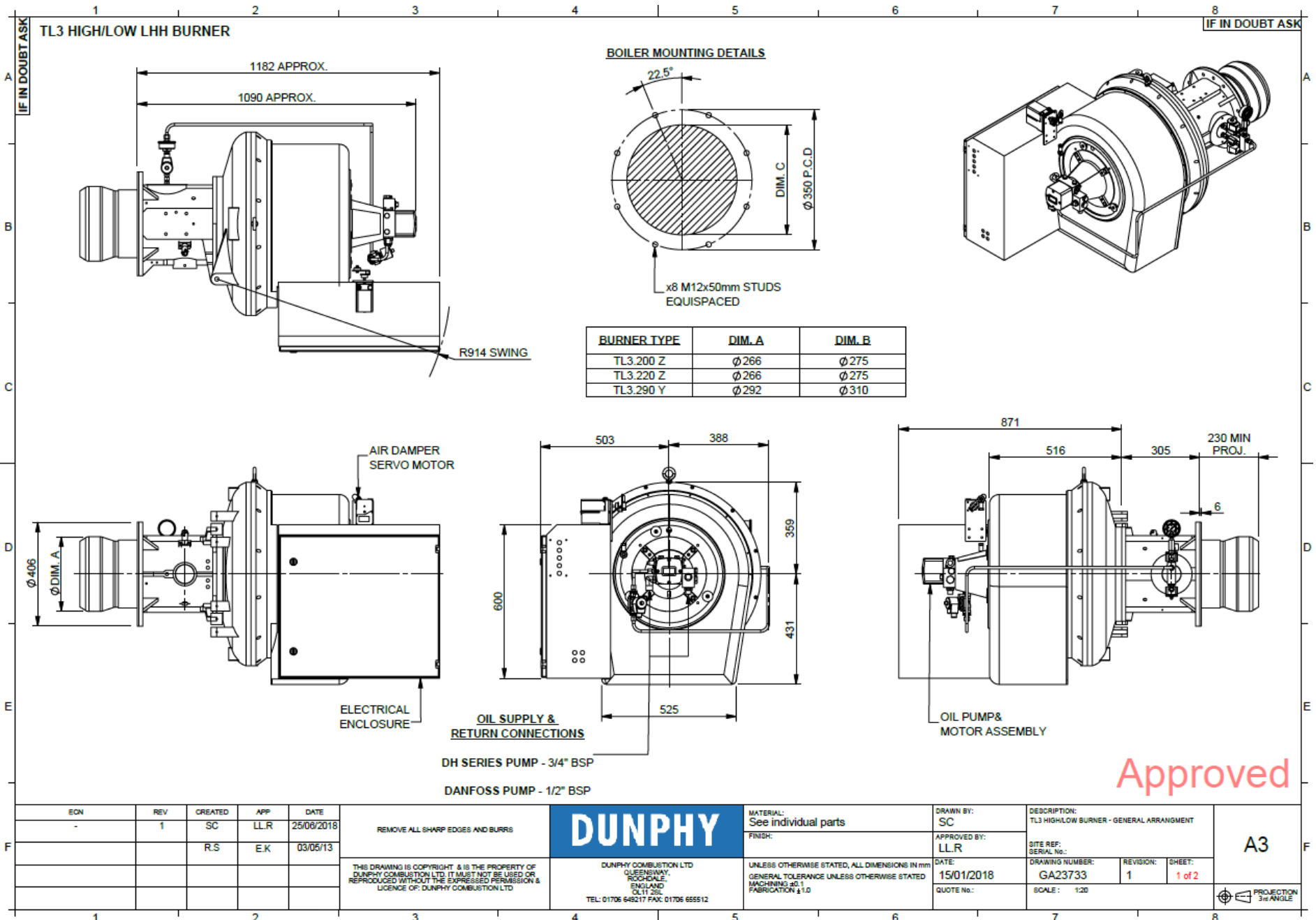
BOILER MOUNTING DETAIL



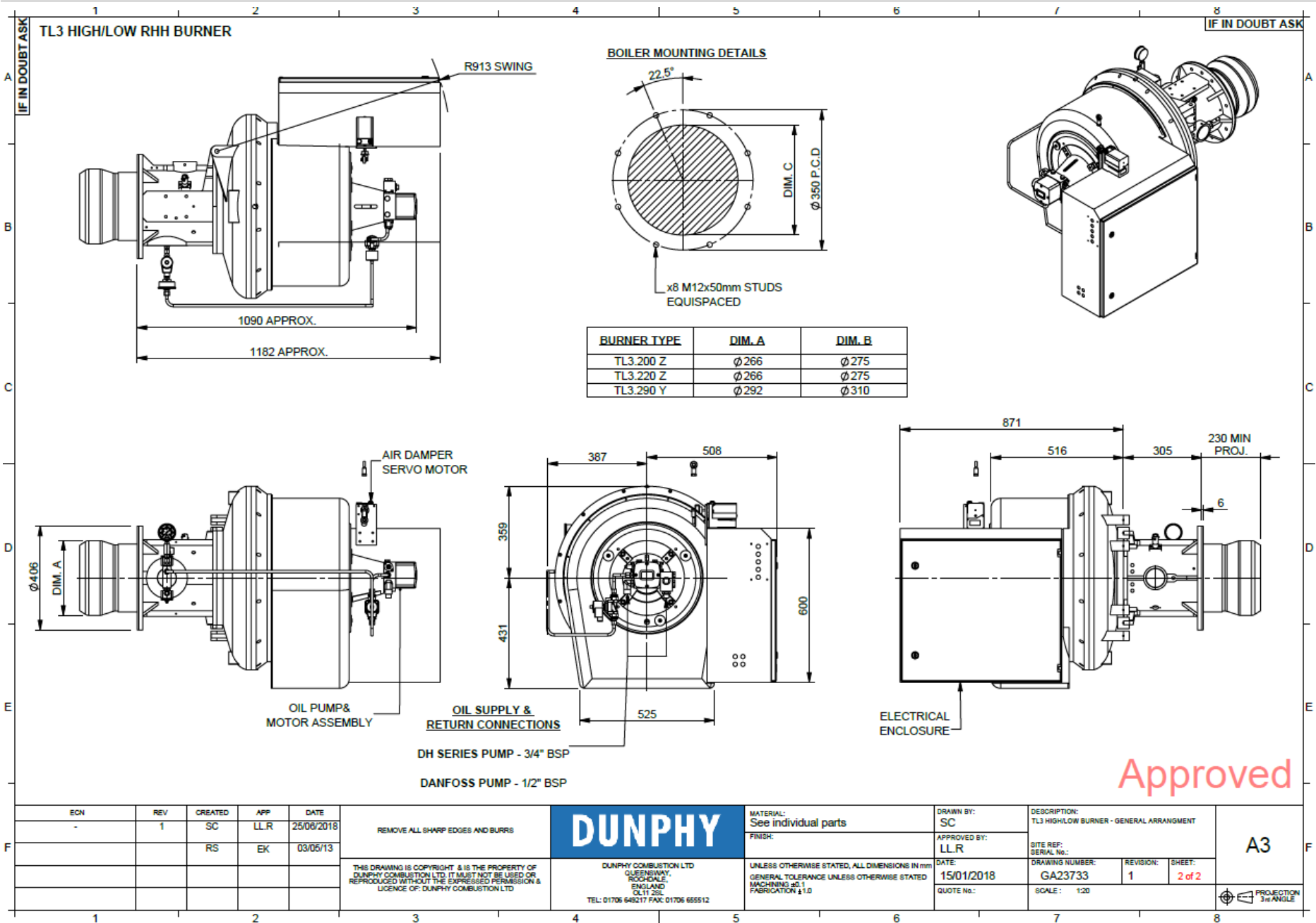
BURNER TYPE	DIM. A	DIM. B
TL 3.200 Z	Ø 266	Ø 275
TL 3.220 Z	Ø 266	Ø 275
TL 3.290 Y	Ø 292	Ø 310



HIGH/LOW LHH

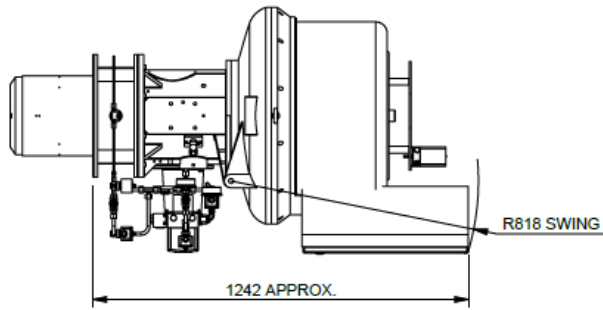


HIGH/LOW RHH

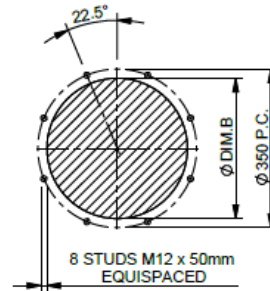


HIGH/LOW LOW NOX LHH

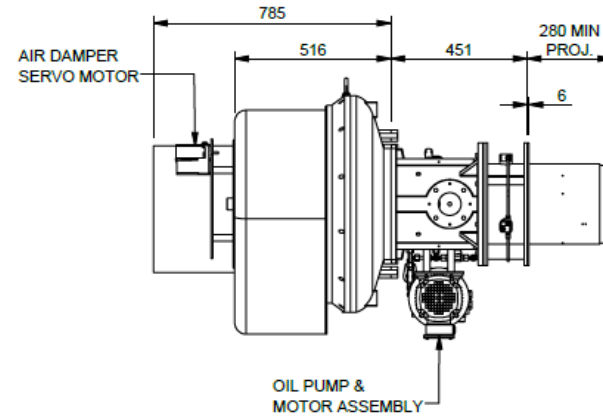
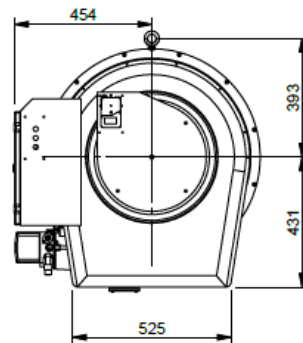
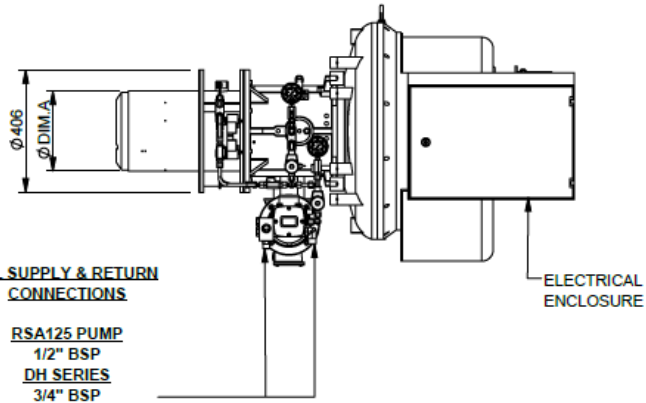
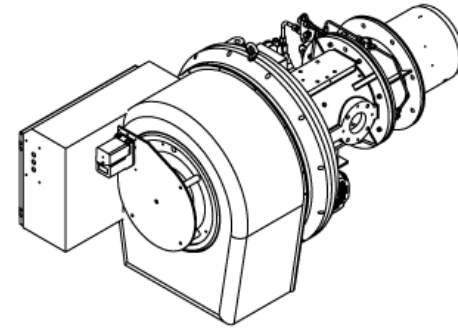
TL3 HIGH/LOW MULTI-OIL LHH



BOILER MOUNTING DETAILS



BURNER TYPE	DIM.A	DIM.B
TL3.200	266	275
TL3.220	266	275
TL3.290	306	316

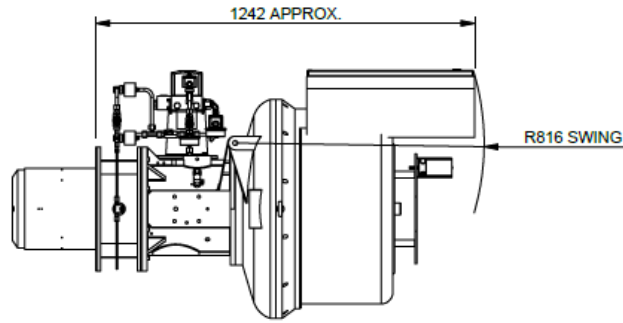


Approved

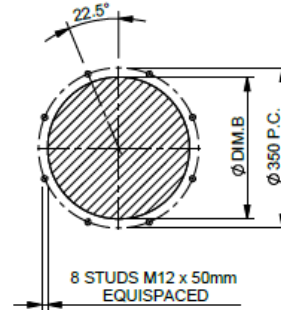
ECN	REV	CREATED	APP	DATE	REMOVE ALL SHARP EDGES AND BURRS	DUNPHY	MATERIAL:	DRAWN BY:	DESCRIPTION:	A3
RHH ADDED, BURNER CODES CHANGED	2	LLR	LLR	25/06/2018			See individual parts	LLR	TL3 HIGH/LOW MULTI OIL BURNER GENERAL ARRANGEMENT	
THIS DRAWING IS COPYRIGHT & IS THE PROPERTY OF DUNPHY COMBUSTION LTD. IT MUST NOT BE REPRODUCED OR REPRODUCED WITHOUT THE EXPRESSED PERMISSION & LICENCE OF DUNPHY COMBUSTION LTD						DUNPHY COMBUSTION LTD QUEENSWAY, ROCHEDALE, ENGLAND OL11 2SL TEL: 01706 645217 FAX: 01706 655512	UNLESS OTHERWISE STATED, ALL DIMENSIONS IN mm GENERAL TOLERANCE UNLESS OTHERWISE STATED MACHINING ±0.1 FABRICATION ±1.0	APPROVED BY:	SITE REF:	PROJECTION 3rd ANGLE
							LLR	GA23736	REVISION:	
								DATE:	25/06/2018	SHEET:
								QUOTE No.:	SCALE: 1:20	1 of 2

HIGH/LOW LOW NOX RHH

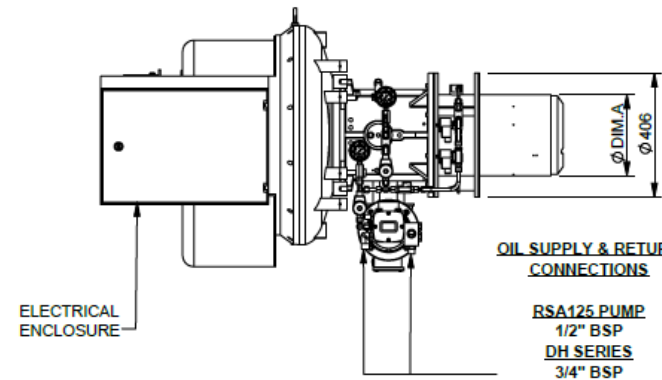
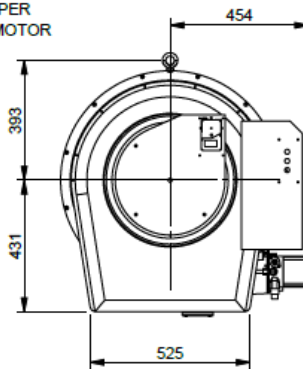
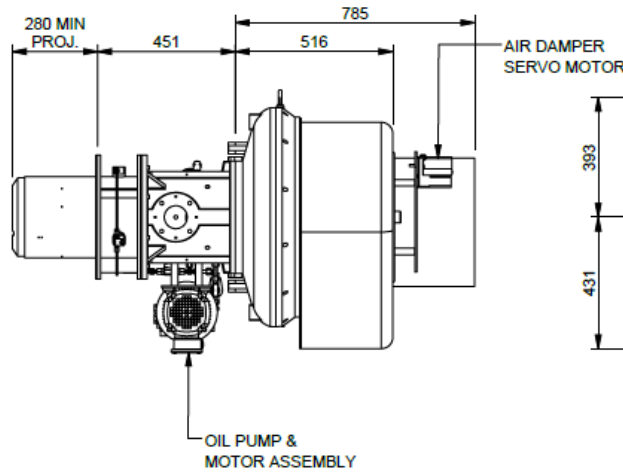
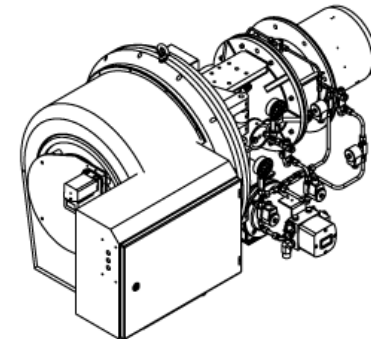
TL3 HIGH/LOW MULTI-OIL RHH



BOILER MOUNTING DETAILS



BURNER TYPE	DIM.A	DIM.B
TL3.200	266	275
TL3.220	266	275
TL3.290	306	316

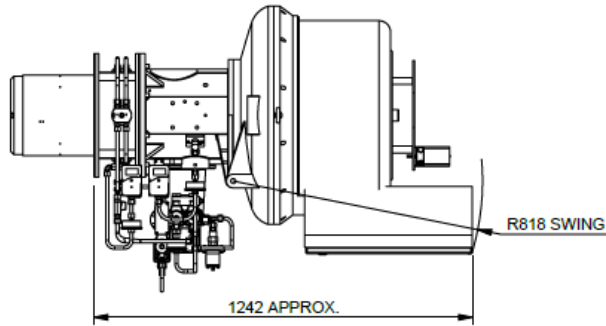


Approved

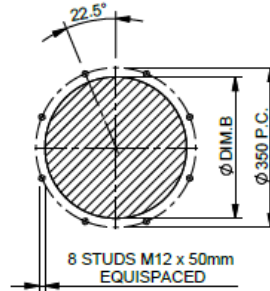
ECN	REV	CREATED	APP	DATE	REMOVE ALL SHARP EDGES AND BURRS	DUNPHY	MATERIAL:	DRAWN BY:	DESCRIPTION: TL3 HIGH/LOW MULTI OIL BURNER GENERAL ARRANGEMENT	A3	
RHH ADDED, BURNER CODES CHANGED	2	LLR	LLR	25/06/2018			See individual parts	LLR			
					THIS DRAWING IS COPYRIGHT & IS THE PROPERTY OF DUNPHY COMBUSTION LTD. IT MUST NOT BE USED OR REPRODUCED WITHOUT THE EXPRESSED PERMISSION & LICENCE OF DUNPHY COMBUSTION LTD	DUNPHY COMBUSTION LTD QUEENSWAY, ROCHDALE, ENGLAND OL11 2SL TEL: 01706 645217 FAX: 01706 655512	FINISH:	APPROVED BY:	SITE REF:		
							UNLESS OTHERWISE STATED, ALL DIMENSIONS IN mm GENERAL TOLERANCE UNLESS OTHERWISE STATED MACHINING ±0.1 FABRICATION ±1.0	LLR	25/06/2018	GA23736	
								QUOTE No.:	DRAWING NUMBER:	REVISION:	SHEET:
									GA23736	2	2 of 2
									SCALE: 1:20		
											PROJECTION 3rd ANGLE

ELECTRONIC MODULATION LOW NOX LHH

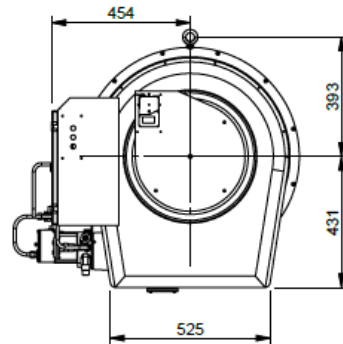
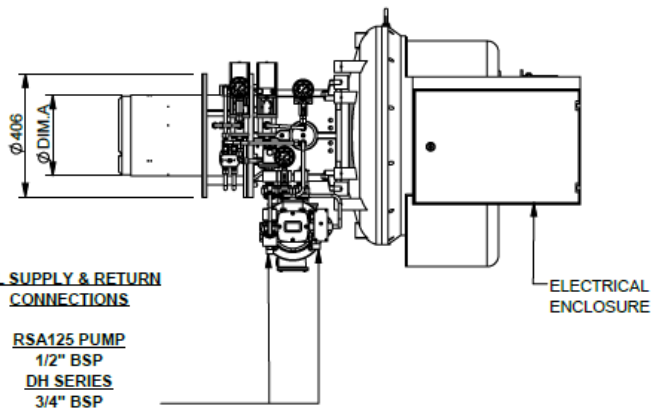
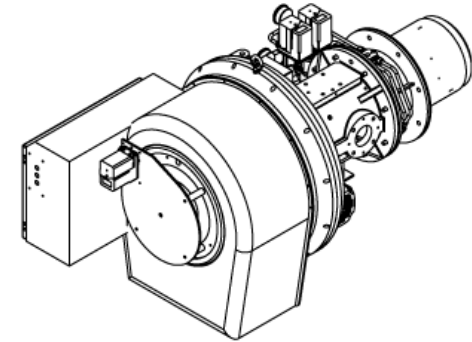
TL3 ELECTRONIC MODULATION MULTI-OIL LHH



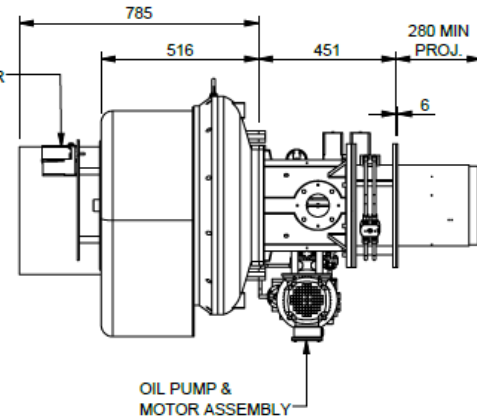
BOILER MOUNTING DETAILS



BURNER TYPE	DIM.A	DIM.B
TL3.200	266	275
TL3.220	266	275
TL3.290	306	316



AIR DAMPER
SERVO MOTOR

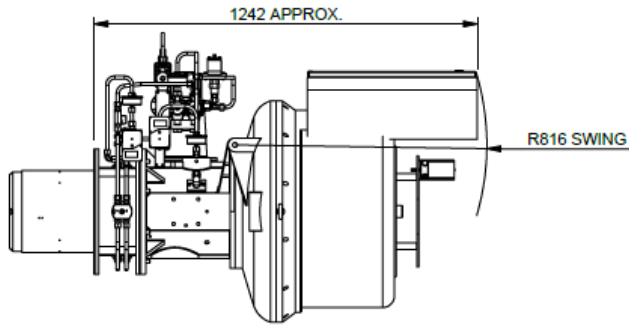


Approved

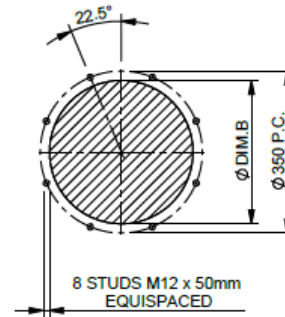
ECN	REV	CREATED	APP	DATE							
RHH ADDED, BURNER CODES CHANGED	2	LLR	LLR	26/06/2018	REMOVE ALL SHARP EDGES AND BURRS	DUNPHY	MATERIAL: See individual parts	DRAWN BY: LLR	DESCRIPTION: TL3 ELECTRONIC MODULATION MULTI OIL BURNER GENERAL ARRANGEMENT	A3	
					THIS DRAWING IS COPYRIGHT & IS THE PROPERTY OF DUNPHY COMBUSTION LTD. IT MUST NOT BE USED OR REPRODUCED WITHOUT THE EXPRESSED PERMISSION & LICENCE OF DUNPHY COMBUSTION LTD.		FINISH:	APPROVED BY: LLR	SITE REF: SERIAL No.:		
						DUNPHY COMBUSTION LTD QUEENSWAY, ROCKDALE, ENGLAND DL11 2SL TEL: 01706 645217 FAX: 01706 655512	UNLESS OTHERWISE STATED, ALL DIMENSIONS IN mm GENERAL TOLERANCE UNLESS OTHERWISE STATED MACHINING ±0.1 FABRICATION ±1.0	DATE: 26/06/2018	DRAWING NUMBER: GA23025	REVISION: 2	SHEET: 1 of 2
								QUOTE No.:	SCALE: 1:20		PROJECTION 3rd ANGLE

ELECTRONIC MODULATION LOW NOX RHH

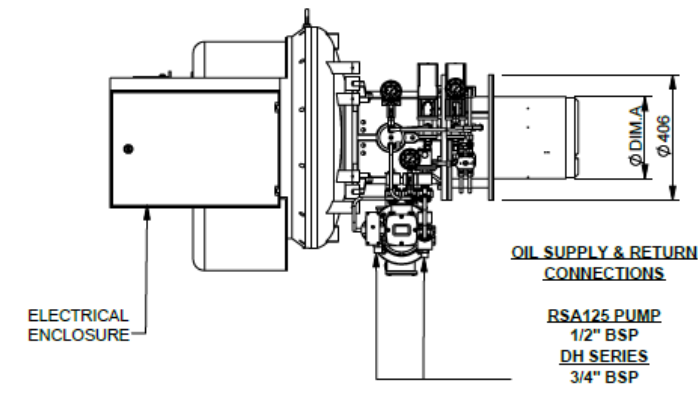
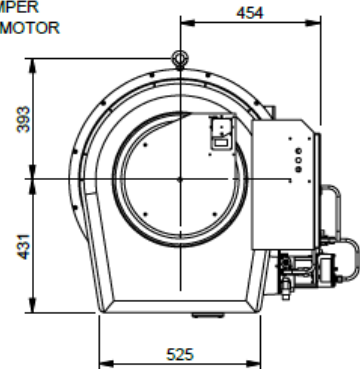
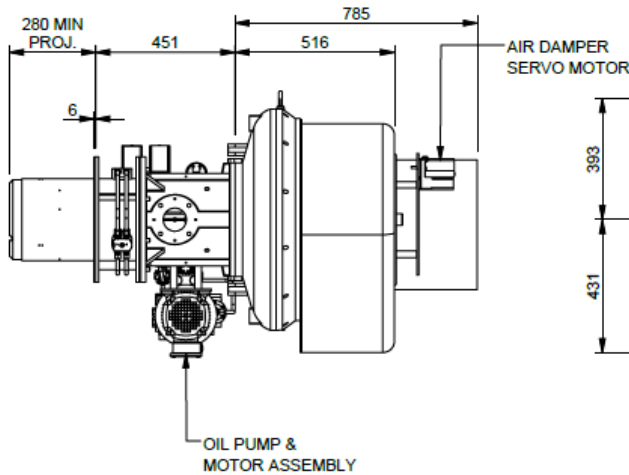
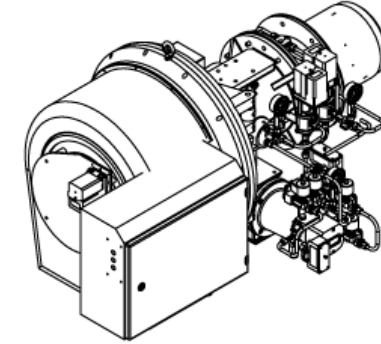
TL3 ELECTRONIC MODULATION MULTI-OIL RHH



BOILER MOUNTING DETAILS

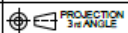


BURNER TYPE	DIM.A	DIM.B
TL3.200	266	275
TL3.220	266	275
TL3.290	306	316



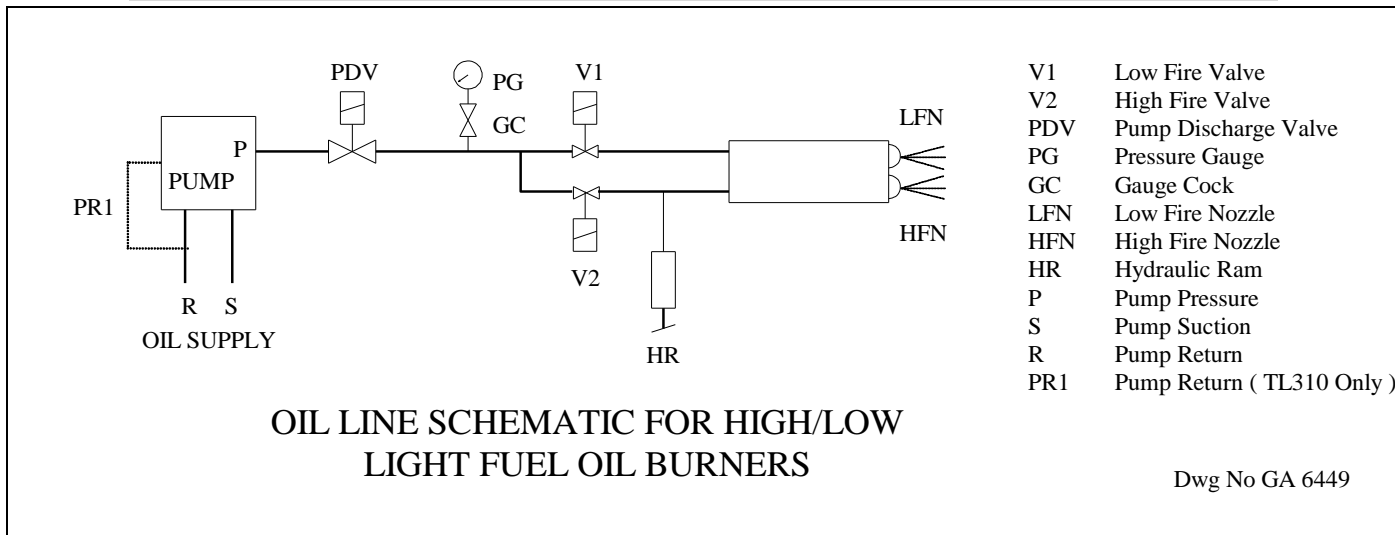
Approved

ECN	REV	CREATED	APP	DATE	REMOVE ALL SHARP EDGES AND BURRS	DUNPHY	MATERIAL:	DRAWN BY:	DESCRIPTION:	A3		
RHH ADDED, BURNER CODES CHANGED	2	LL.R	LL.R	26/06/2018			See individual parts	LL.R	TL3 ELECTRONIC MODULATION MULTI OIL BURNER GENERAL ARRANGEMENT			
					THIS DRAWING IS COPYRIGHT & IS THE PROPERTY OF DUNPHY COMBUSTION LTD. IT MUST NOT BE USED OR REPRODUCED WITHOUT THE EXPRESSED PERMISSION & LICENCE OF DUNPHY COMBUSTION LTD	DUNPHY COMBUSTION LTD QUEENSWAY, ROCKDALE, ENGLAND DL11 2SL TEL: 01706 645217 FAX: 01706 655512	FINISH:	APPROVED BY:	SITE REF:	GA23025	REVISION:	SHEET:
							GENERAL TOLERANCE UNLESS OTHERWISE STATED	LL.R	26/06/2018		GA23025	2
							UNLESS OTHERWISE STATED, ALL DIMENSIONS IN mm	DATE:	QUOTE No.:	SCALE: 1:20		
							GENERAL TOLERANCE UNLESS OTHERWISE STATED	26/06/2018				
							MACHINING ±0.1					
							FABRICATION ±1.0					

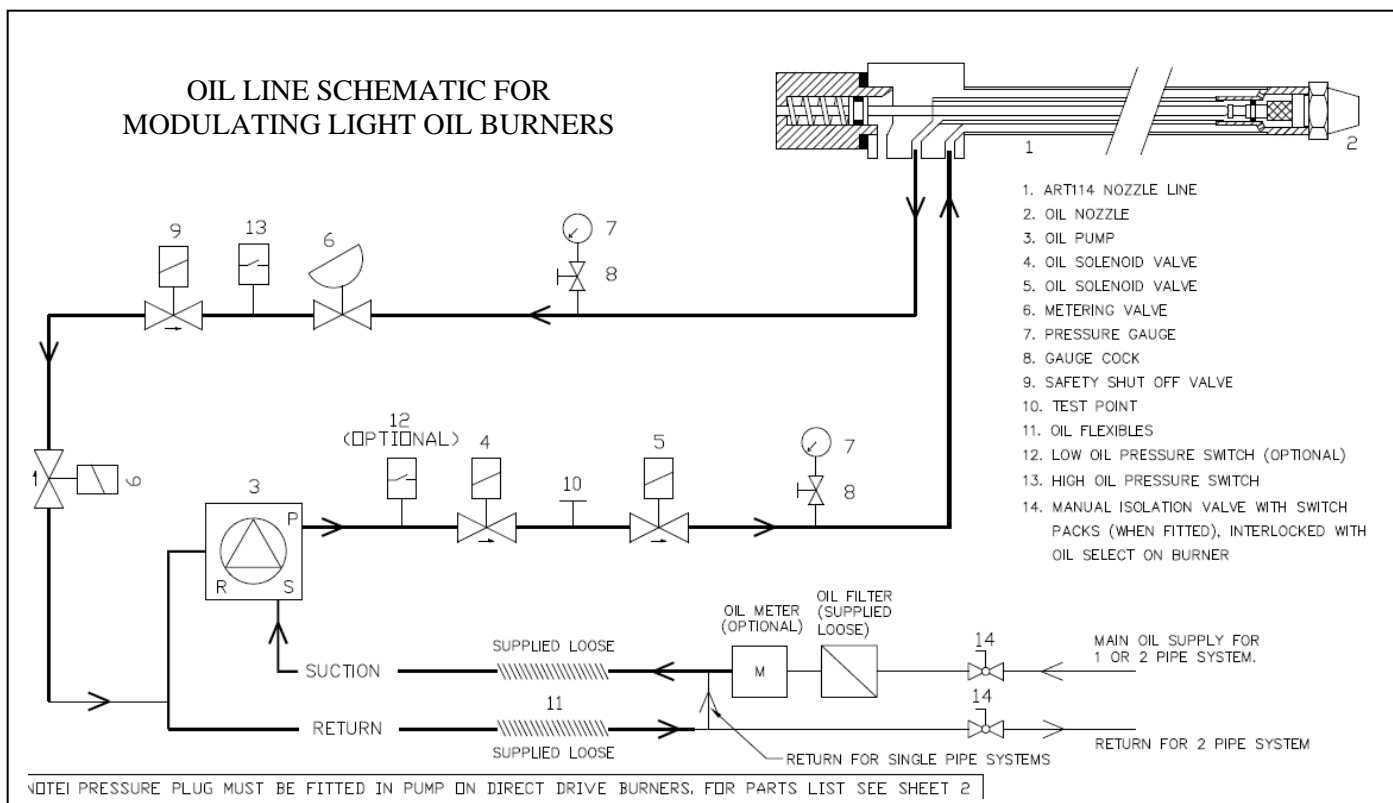


BURNER RATING GRAPH & SCHEMATICS

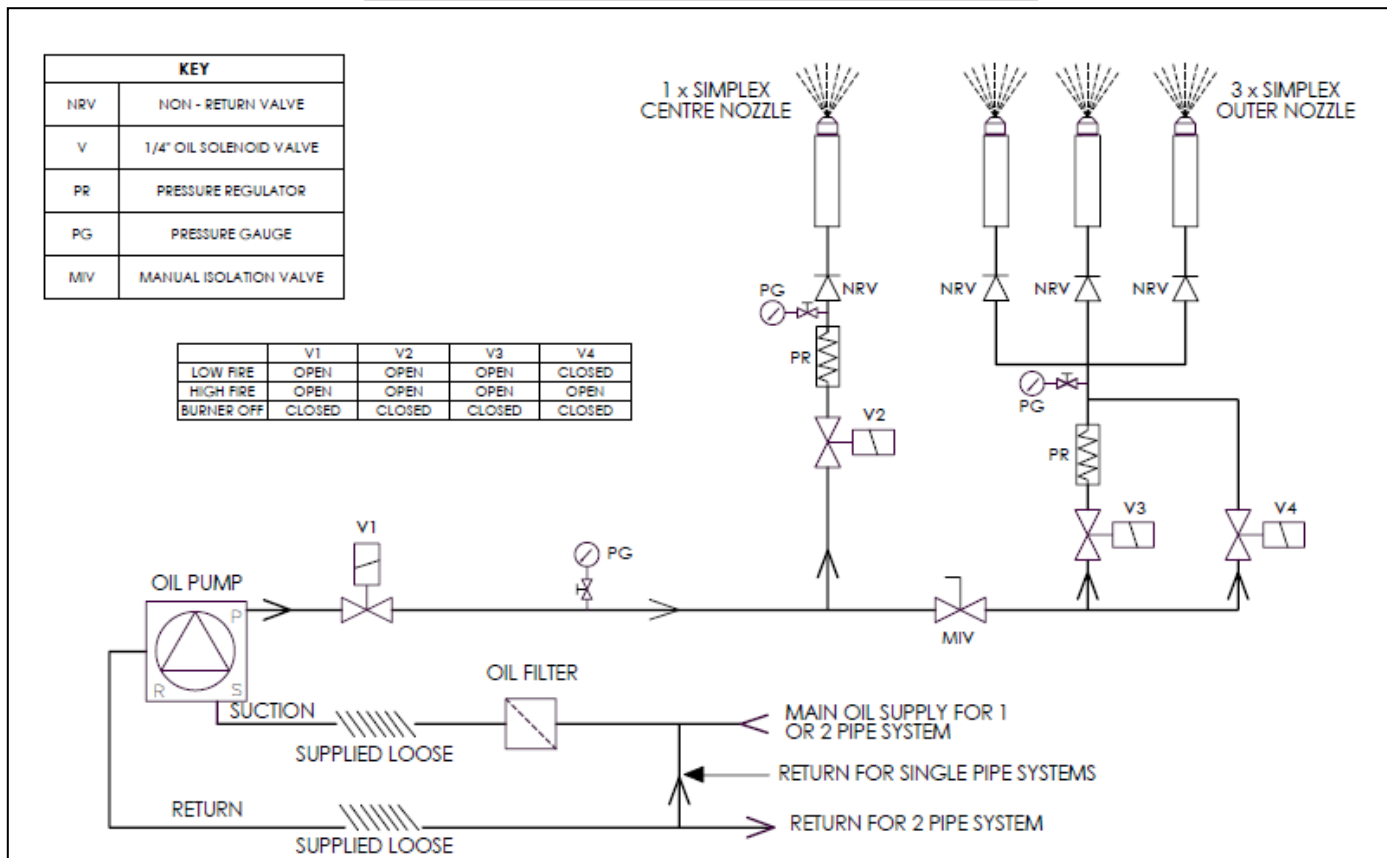
TYPICAL SCHEMATIC FOR HIGH/LOW LIGHT OIL BURNERS



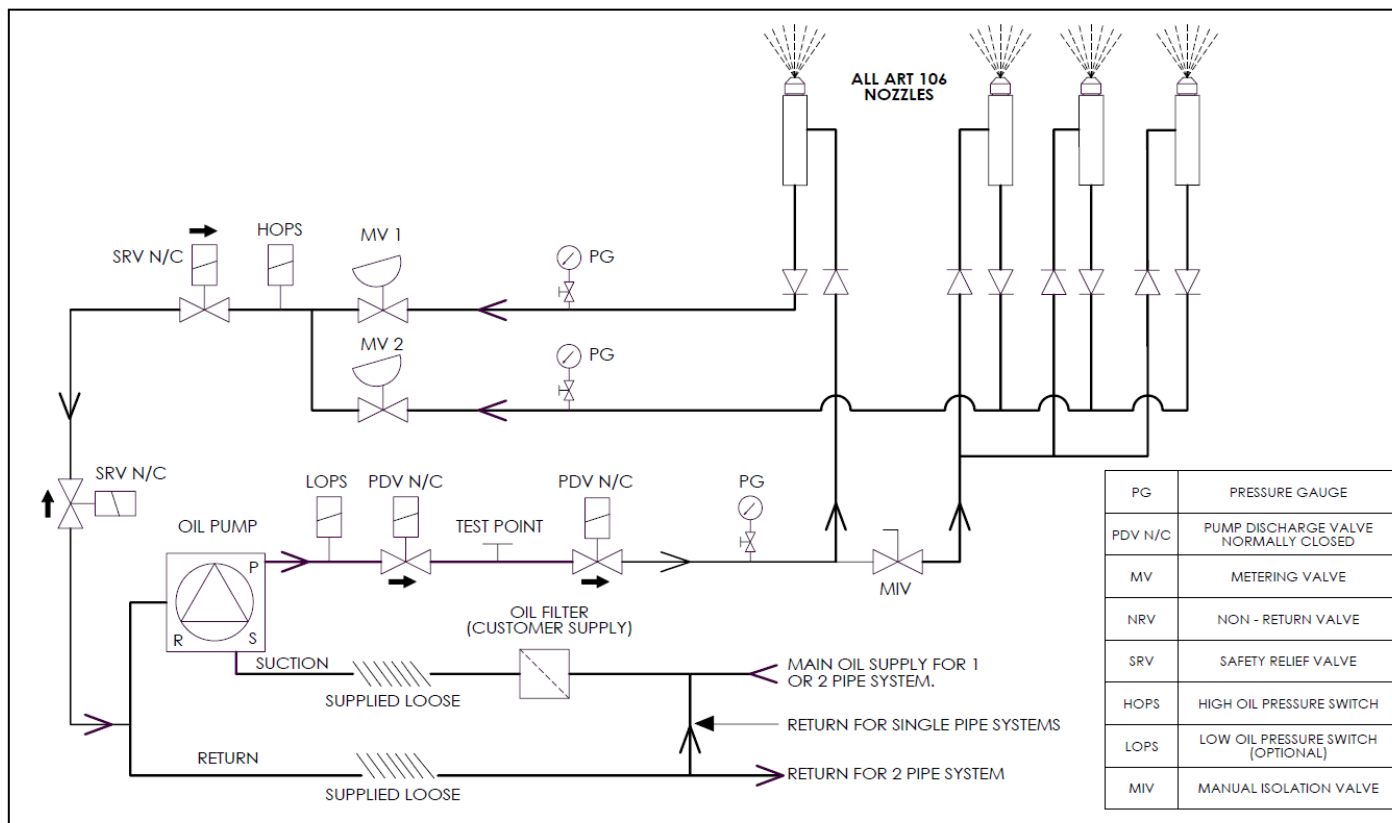
TYPICAL SCHEMATIC FOR MODULATING LIGHT OIL BURNERS



TYPICAL SCHEMATIC FOR HIGH/LOW MULTI NOZZLE SYSTEM BURNER FIXED CENTRAL NOZZLE



TYPICAL SCHEMATIC FOR MODULATING MULTI NOZZLE SYSTEM

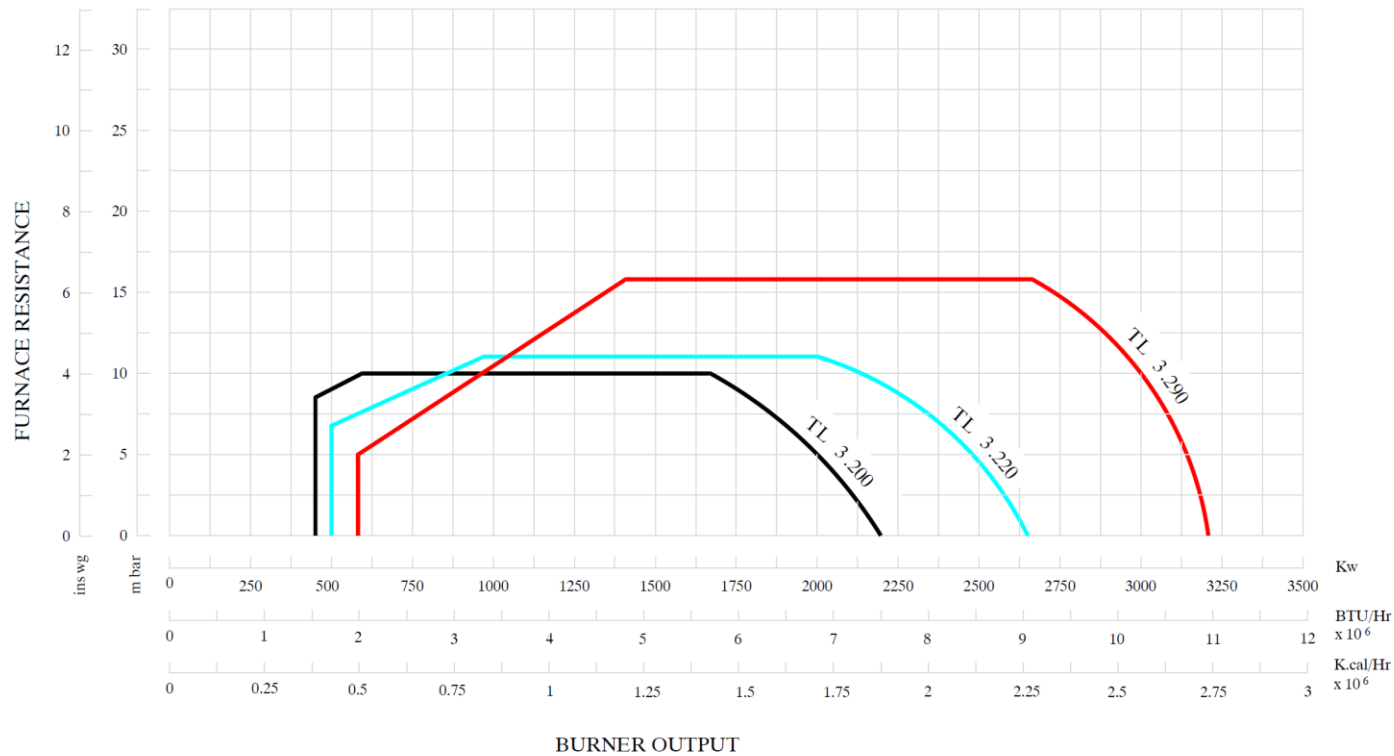


STANDARD SPECIFICATION DATA

BURNER TYPE	Firing Rate kW		Oil Consumption (kg/hr)*1		FIRING MODE OPTIONS		Fan Motor kW	Pump Motor kW	Voltage	Hz	Ph	Running Current	Starting Current (without inverter)	Weight (kg)
	MIN	MAX	MIN	MAX	High / Low	Electronic Modulation*2								
TL3.200 Z	450	2000	36	158	✓	✓	3.0	1.1	380-420	50	3	9 A	53 A	171
TL3.220 Z	500	2200	40	175	✓	✓	4.0	1.1	380-420	50	3	11 A	79 A	188
TL3.290 Y	570	2950	46	234	✓	✓	5.5	1.1	380-420	50	3	16 A	36 A	196

*1 – Based on Gas Oil C.V 12.6 kW/kg

*2 - Fitted with a Ratiotronic 6000 system



Dunphy Combustion Ltd. has a policy of continuous development and reserve the right to change prices and specifications without prior notice