

DUNPHY

DUNPHY COMBUSTION LTD.

Queensway
Rochdale
England
OL11 2SL



+44 (0)1706 649217



+44 (0)1706 655512



www.dunphy.co.uk

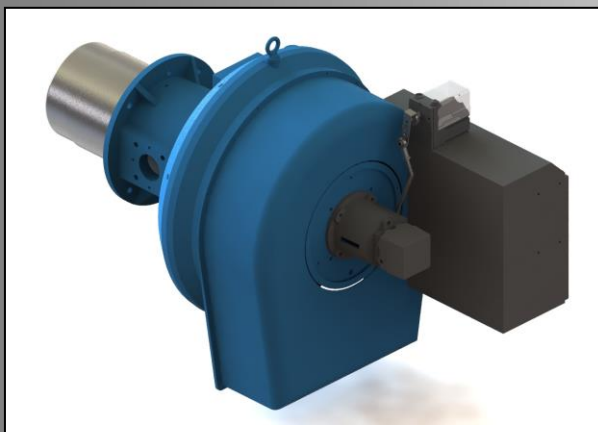
DATA SHEET

Model: TL2

Revision Date: May 2020

Output: 160 – 1550 kW

Revision Number: DS.TL2.15



- ◆ All models approved to current British and European Standards.

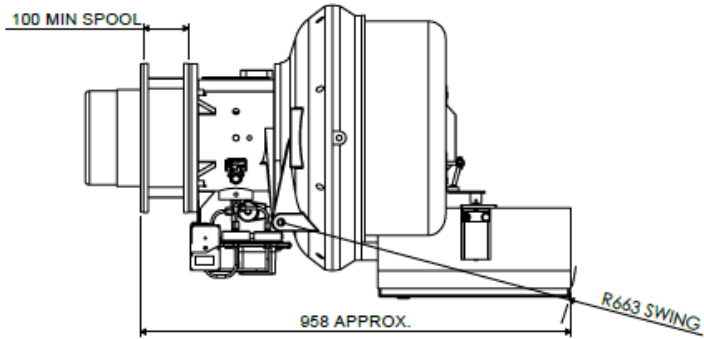


BURNER DIMENSIONS

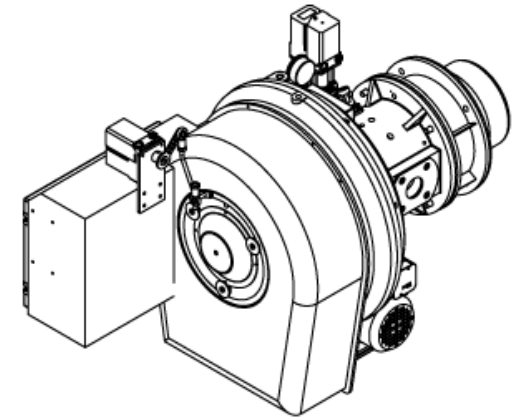
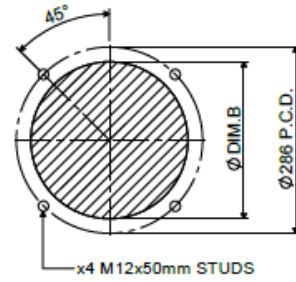
- Drawings shown on the following pages
- All dimensions in mm unless otherwise stated.
- The minimum standard dimension for 'PROJ' is 130mm for modulating oil burners, 230mm for high/low burners and 280mm for multi-oil burners. However it can be varied to suit application, requirements should be stated when unit is ordered.
- The swing radius shown is the average; this can vary on non-standard burners.
- Burners supplied as Left hand hinge or Right hand hinge
- Please check the issue number to ensure validity.

ELECTRONIC MODULATION LHH

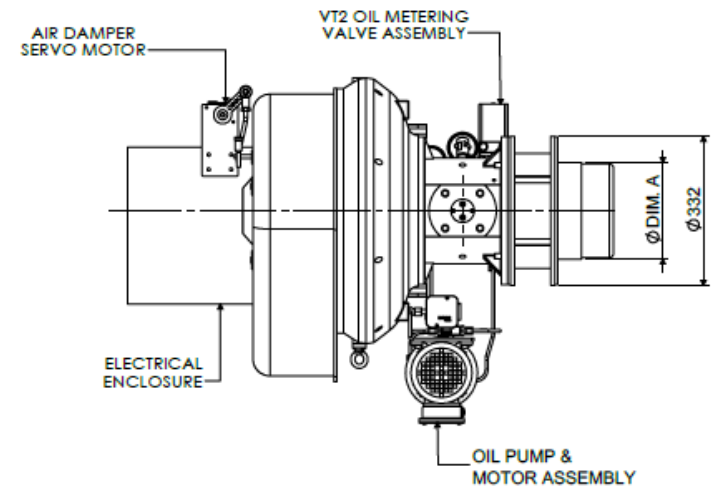
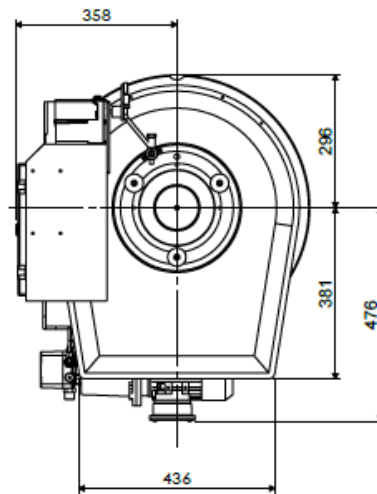
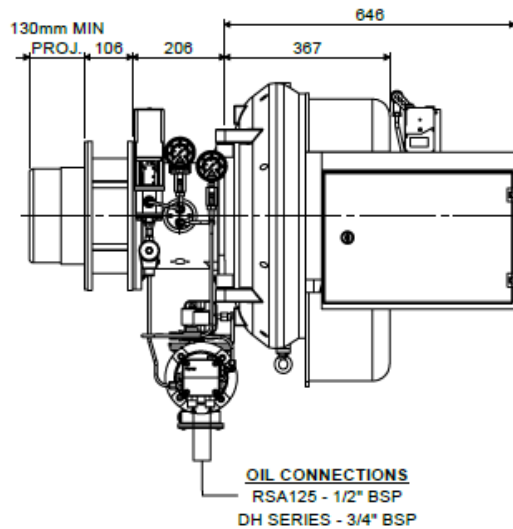
TL2.100-2.155 ELECTRONIC MODULATION BURNER - LHH



BOILER MOUNTING DETAILS

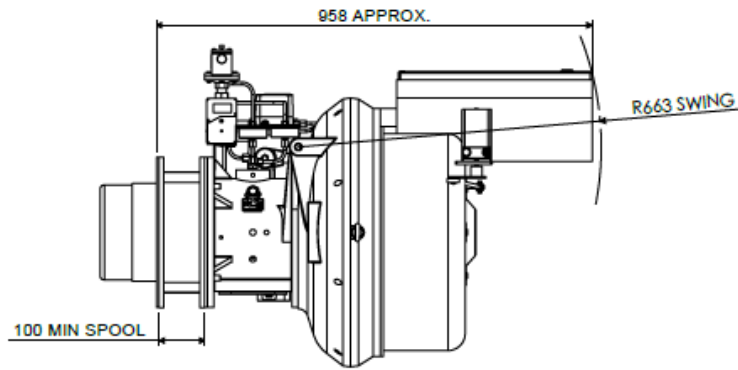


BURNER TYPE	DIM. A	DIM. B
TL 2.100 Z	Ø216	Ø223
TL 2.115 Z	Ø218	Ø223
TL 2.155 Y	Ø235	Ø250

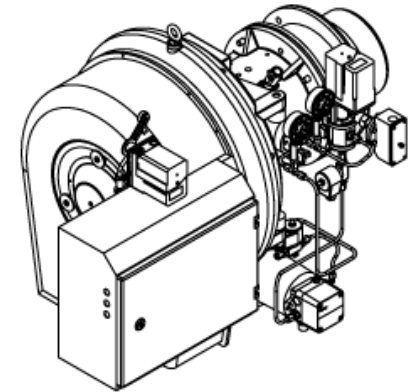
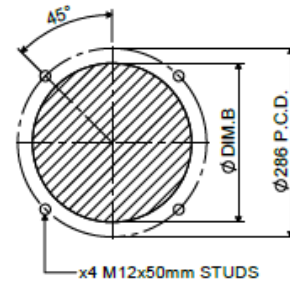


ELECTRONIC MODULATION RHH

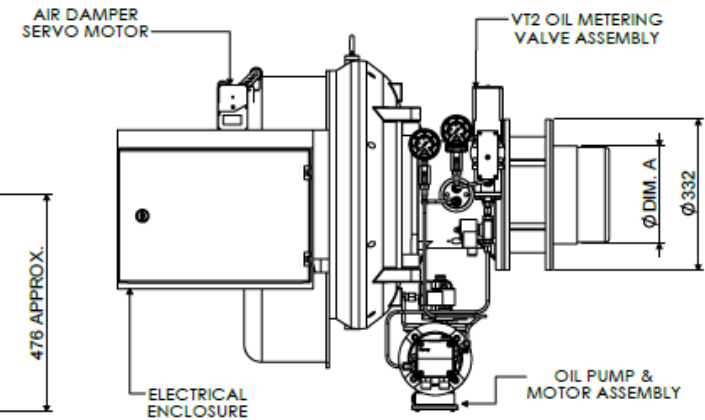
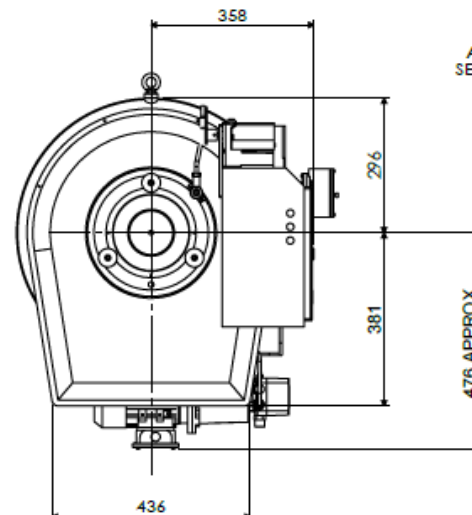
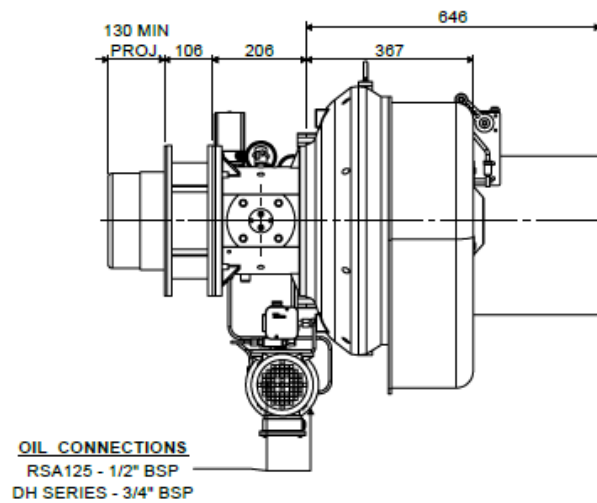
TL2.100-2.155 ELECTRONIC MODULATION BURNER - RHH



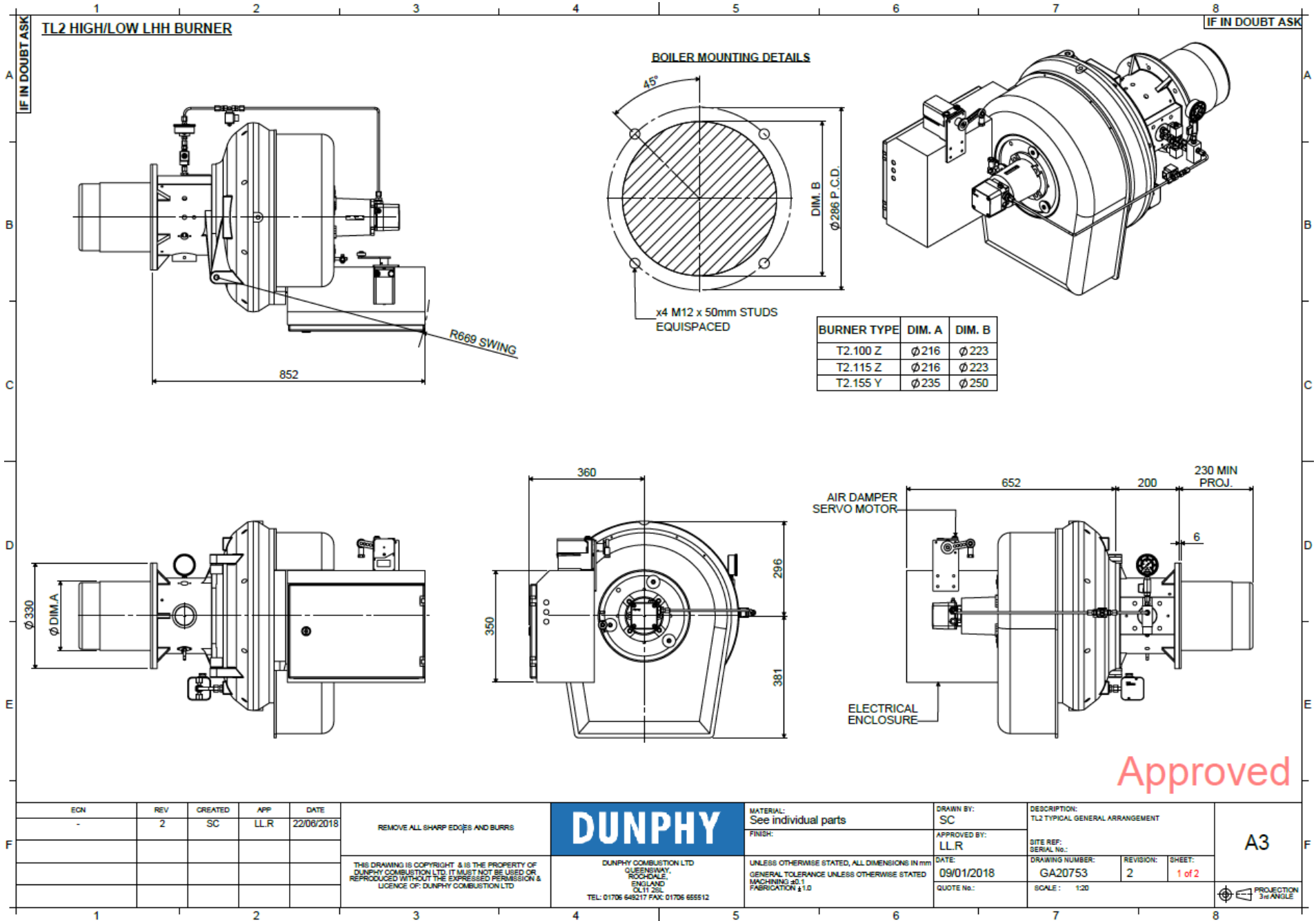
BOILER MOUNTING DETAILS



BURNER TYPE	DIM. A	DIM. B
TL 2.100 Z	Ø216	Ø223
TL 2.115 Z	Ø216	Ø223
TL 2.155 Y	Ø235	Ø250



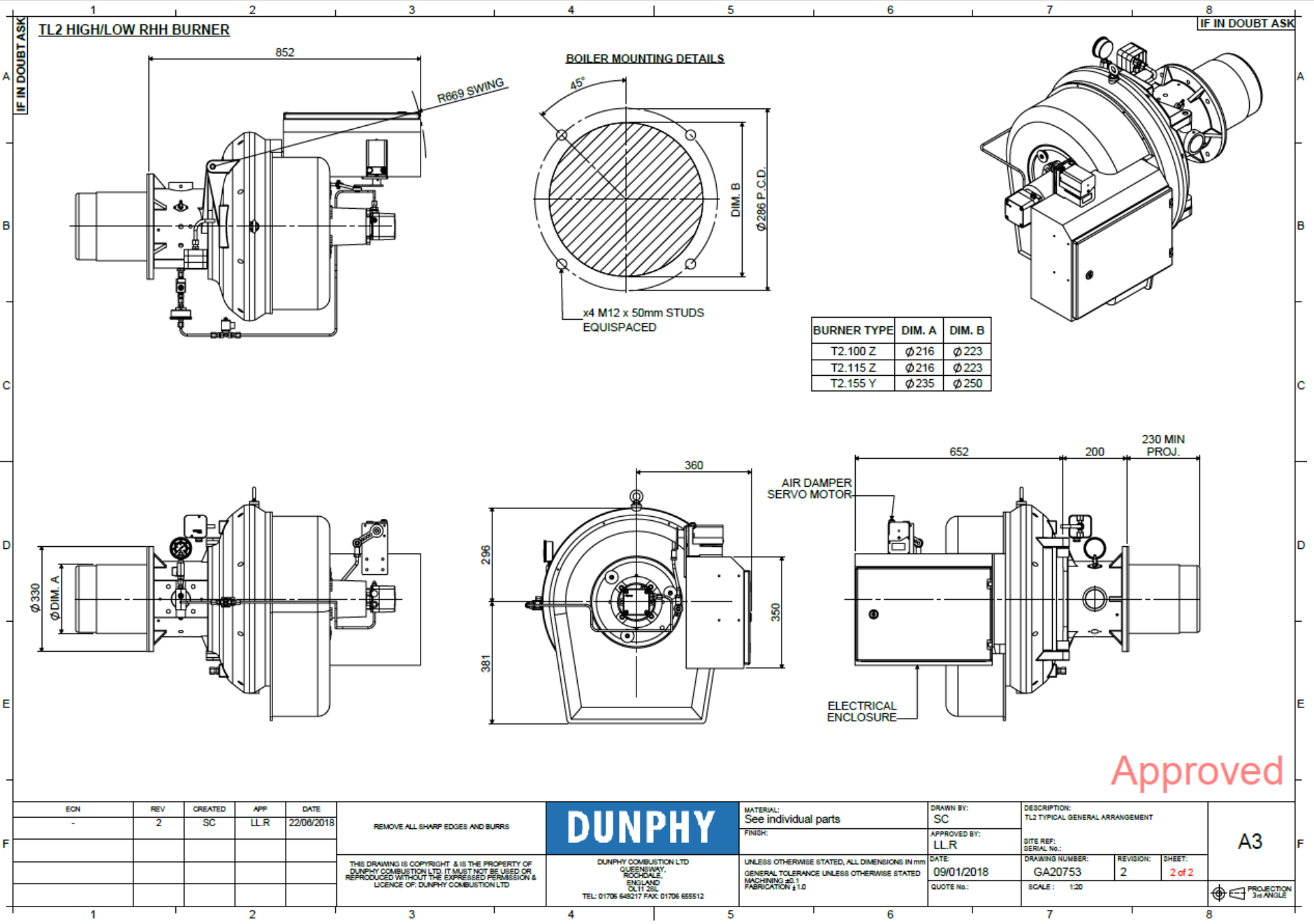
HIGH/LOW LHH



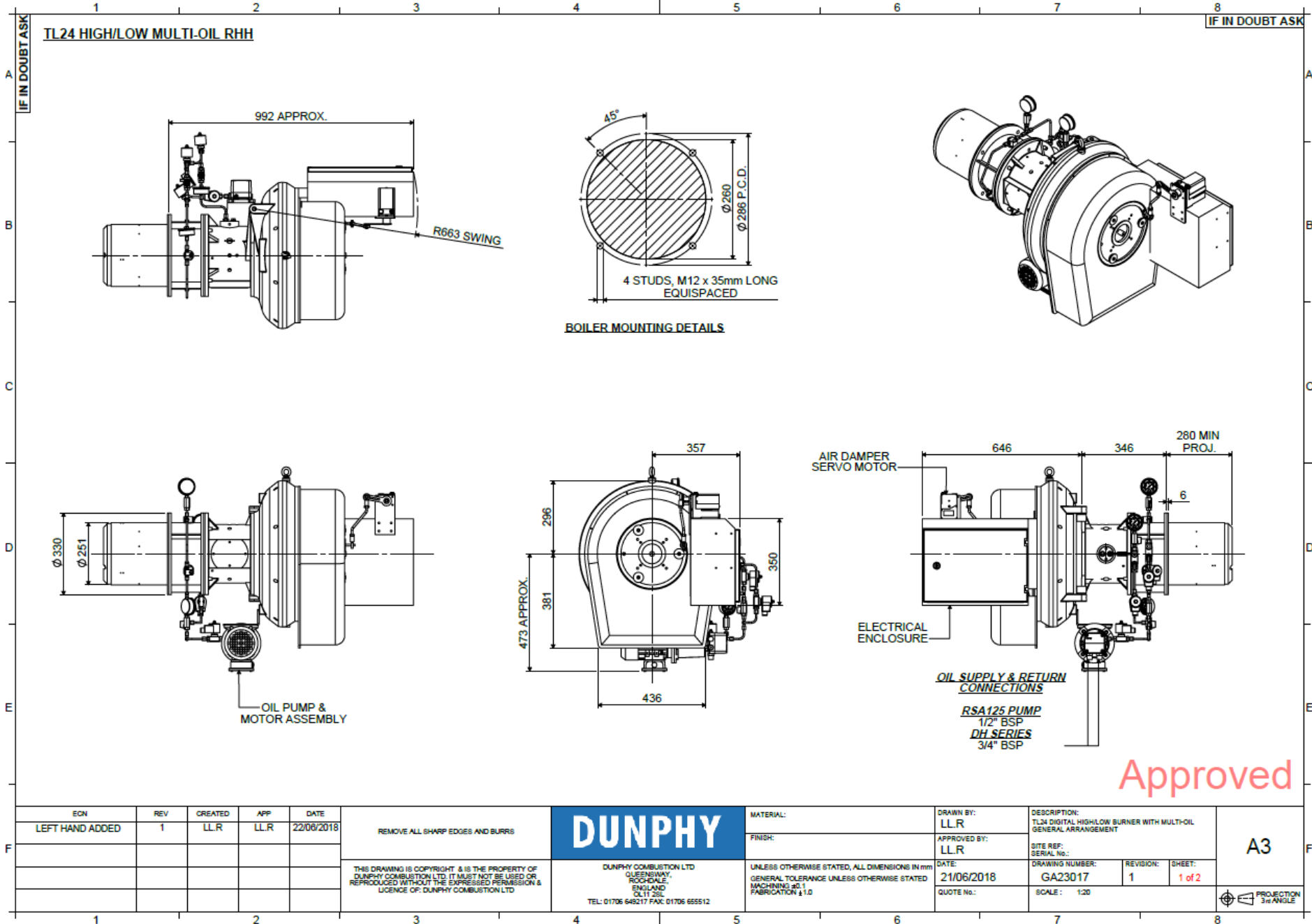
Approved

ECN	REV	CREATED	APP	DATE	REMOVE ALL SHARP EDGES AND BURRS	DUNPHY	MATERIAL:	DRAWN BY:	DESCRIPTION:	A3
-	2	SC	LLR	22/06/2018			See individual parts	SC		
THIS DRAWING IS COPYRIGHT & IS THE PROPERTY OF DUNPHY COMBUSTION LTD. IT MUST NOT BE USED OR REPRODUCED WITHOUT THE EXPRESSED PERMISSION & LICENCE OF: DUNPHY COMBUSTION LTD						DUNPHY COMBUSTION LTD QUEENSWAY ROCHDALE, ENGLAND OL11 2SL TEL: 01706 648217 FAX: 01706 655512	FINISH:	APPROVED BY:	SITE REF:	PROJECTION 3rd ANGLE
						UNLESS OTHERWISE STATED, ALL DIMENSIONS IN mm GENERAL TOLERANCE UNLESS OTHERWISE STATED MACHINING ±1.0 FABRICATION ±1.0	LLR	GA20753	REVISION:	
								DATE:	DRAWING NUMBER:	SHEET:
								09/01/2018	2	1 of 2
								QUOTE No.:	SCALE:	
									1:20	

HIGH/LOW RHH



TL2.155 HIGH/LOW MULTI-OIL RHH



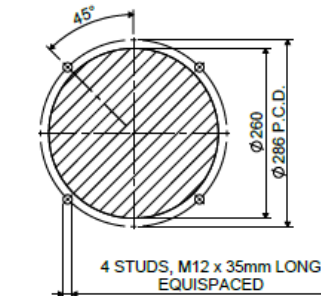
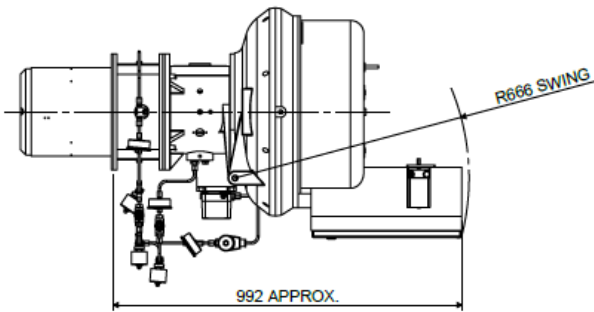
Approved

ECN	REV	CREATED	APP	DATE	REMOVE ALL SHARP EDGES AND BURRS	DUNPHY	MATERIAL:	DRAWN BY:	DESCRIPTION:			A3
LEFT HAND ADDED	1	LLR	LLR	22/08/2018			FINISH:	LLR	TL24 DIGITAL HIGH/LOW BURNER WITH MULTI-OIL GENERAL ARRANGEMENT			
					THIS DRAWING IS COPYRIGHT & IS THE PROPERTY OF DUNPHY COMBUSTION LTD. IT MUST NOT BE USED OR REPRODUCED WITHOUT THE EXPRESSED PERMISSION & LICENCE OF DUNPHY COMBUSTION LTD	DUNPHY COMBUSTION LTD QUEENSWAY, ROOKDALE, ENGLAND DL11 2SL TEL: 01705 640177 FAX: 01705 655512	UNLESS OTHERWISE STATED, ALL DIMENSIONS IN mm	DATE:	DRAWING NUMBER:	REVISION:	SHEET:	PROJECTION 3rd ANGLE
							GENERAL TOLERANCE UNLESS OTHERWISE STATED	21/06/2018	GA23017	1	1 of 2	
							MACHINING ±0.1 FABRICATION ±1.0	QUOTE No.:	SCALE: 1:20			

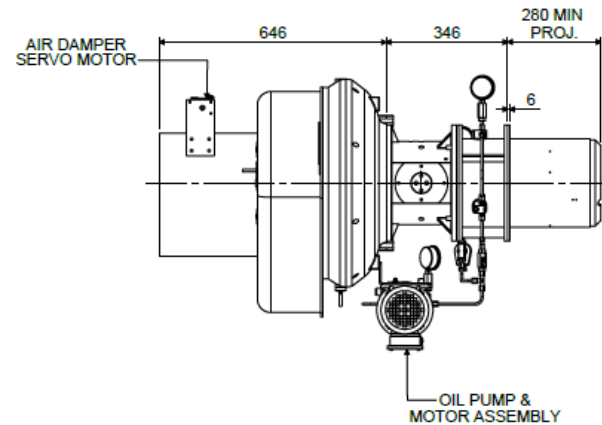
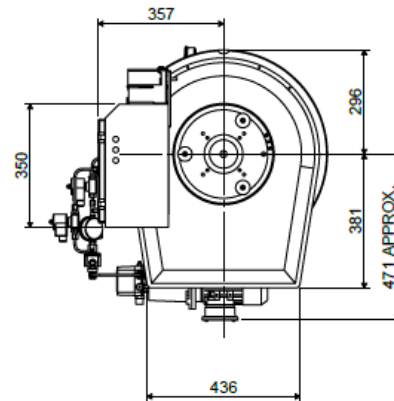
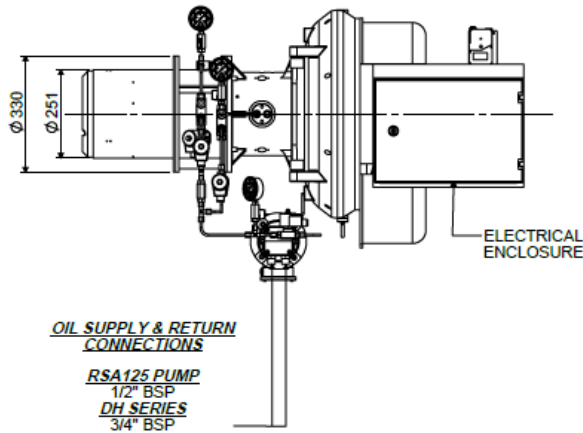
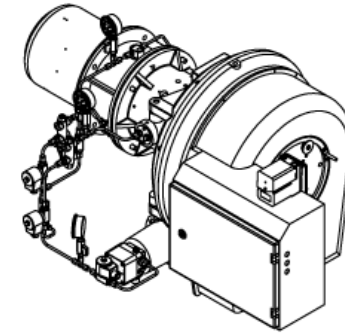
TL2.155 HIGH/LOW MULTI-OIL LHH

IF IN DOUBT ASK

TL24 HIGH/LOW MULTI-OIL LHH



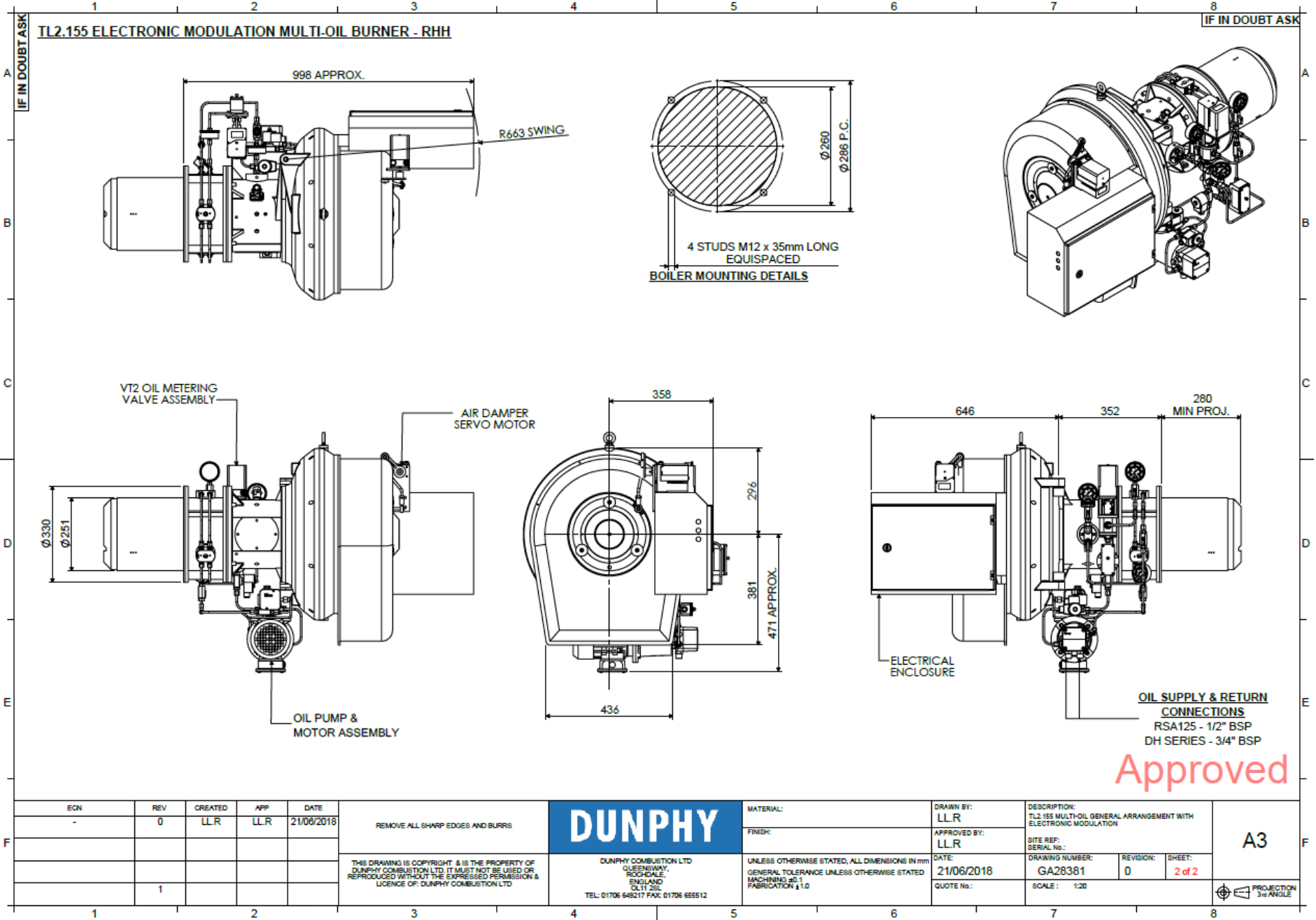
BOILER MOUNTING DETAILS



Approved

ECN	REV	CREATED	APP	DATE	REMOVE ALL SHARP EDGES AND BURRS	DUNPHY	MATERIAL:	DRAWN BY:	DESCRIPTION:			A3	
LEFT HAND ADDED	1	LLR	LLR	22/06/2018			FINISH:	LLR	TL24 DIGITAL HIGH/LOW BURNER WITH MULTI-OIL GENERAL ARRANGEMENT				
THIS DRAWING IS COPYRIGHT & IS THE PROPERTY OF DUNPHY COMBUSTION LTD. IT MUST NOT BE USED OR REPRODUCED WITHOUT THE EXPRESSED PERMISSION & LICENCE OF DUNPHY COMBUSTION LTD						DUNPHY COMBUSTION LTD QUEENSWAY, ROCHDALE, ENGLAND OL11 2SL TEL: 01706 646217 FAX: 01706 655512	UNLESS OTHERWISE STATED, ALL DIMENSIONS IN mm GENERAL TOLERANCE UNLESS OTHERWISE STATED MACHINING ±0.1 FABRICATION ±1.0	DATE: 21/06/2018	APPROVED BY: LLR	SITE REF: SERIAL No.:	DRAWING NUMBER: GA23017	REVISION: 1	SHEET: 2 of 2
								QUOTE No.:	SCALE: 1:20	PROJECTION 3rd ANGLE			

TL2.155 MODULATING MULTI-OIL RHH



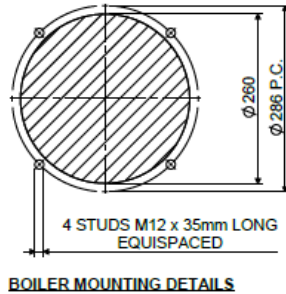
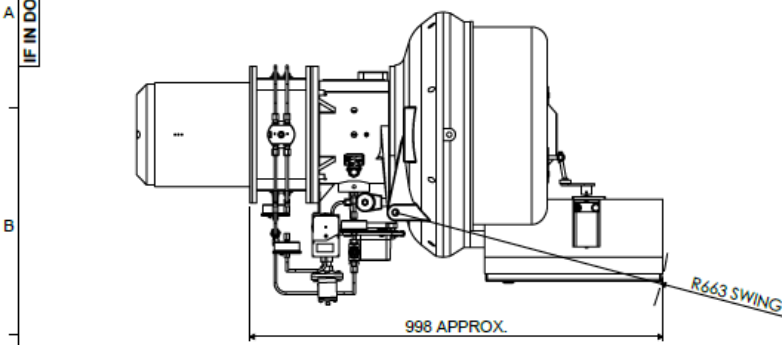
Approved

ECN	REV	CREATED	APP	DATE	REMOVE ALL SHARP EDGES AND BURRS	DUNPHY	MATERIAL:	DRAWN BY:	DESCRIPTION: TL2.155 MULTI-OIL GENERAL ARRANGEMENT WITH ELECTRONIC MODULATION	A3	
-	0	LLR	LLR	21/06/2018			FINISH:	LLR			LLR
THIS DRAWING IS COPYRIGHT & IS THE PROPERTY OF DUNPHY COMBUSTION LTD. IT MUST NOT BE USED OR REPRODUCED WITHOUT THE EXPRESSED PERMISSION & LICENCE OF DUNPHY COMBUSTION LTD					DUNPHY COMBUSTION LTD QUEENSWAY, ROCHDALE, ENGLAND OL11 2SL TEL: 01706 648217 FAX: 01706 65512		UNLESS OTHERWISE STATED, ALL DIMENSIONS IN mm GENERAL TOLERANCE UNLESS OTHERWISE STATED MACHINING ± 0.1 FABRICATION ± 1.0		SITE REF: SERIAL No.:	PROJECTION 3rd ANGLE	
							DATE: 21/06/2018	APPROVED BY: LLR	DRAWING NUMBER: GA28381		REVISION: 0
							QUOTE No.:		SCALE: 1:20		

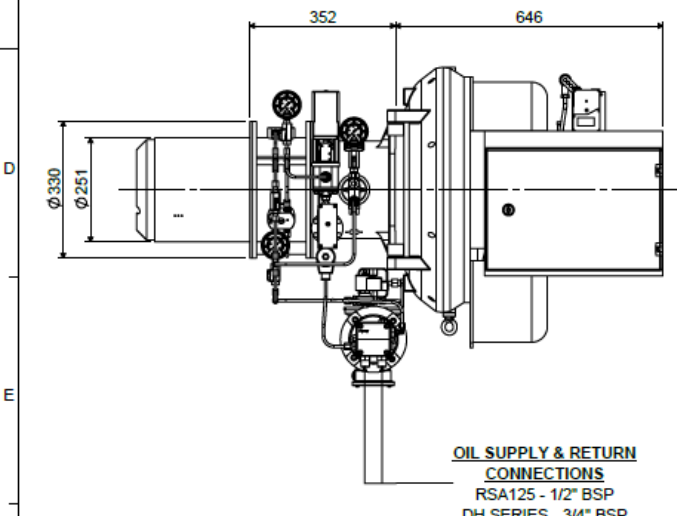
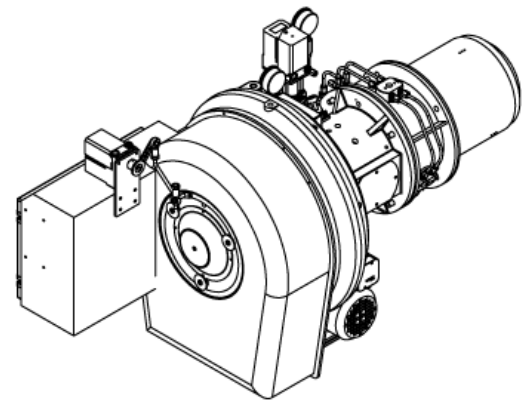
TL2.155 MODULATING MULTI-OIL LHH

IF IN DOUBT ASK

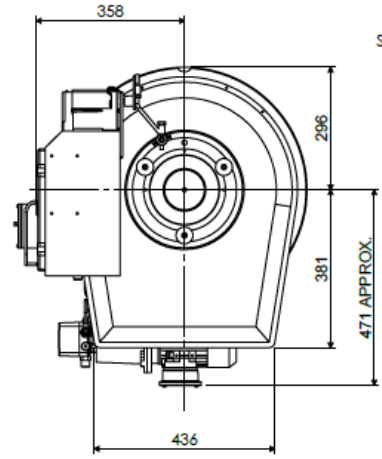
TL2.155 ELECTRONIC MODULATION MULTI-OIL BURNER - LHH



BOILER MOUNTING DETAILS

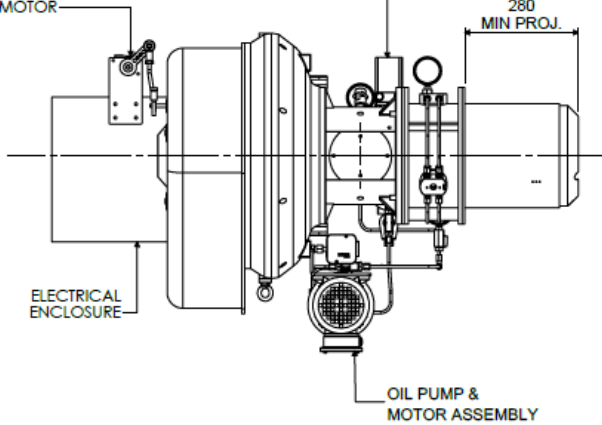


**OIL SUPPLY & RETURN
CONNECTIONS**
RSA125 - 1/2" BSP
DH SERIES - 3/4" BSP



AIR DAMPER
SERVO MOTOR

VT2 OIL METERING
VALVE ASSEMBLY



ELECTRICAL
ENCLOSURE

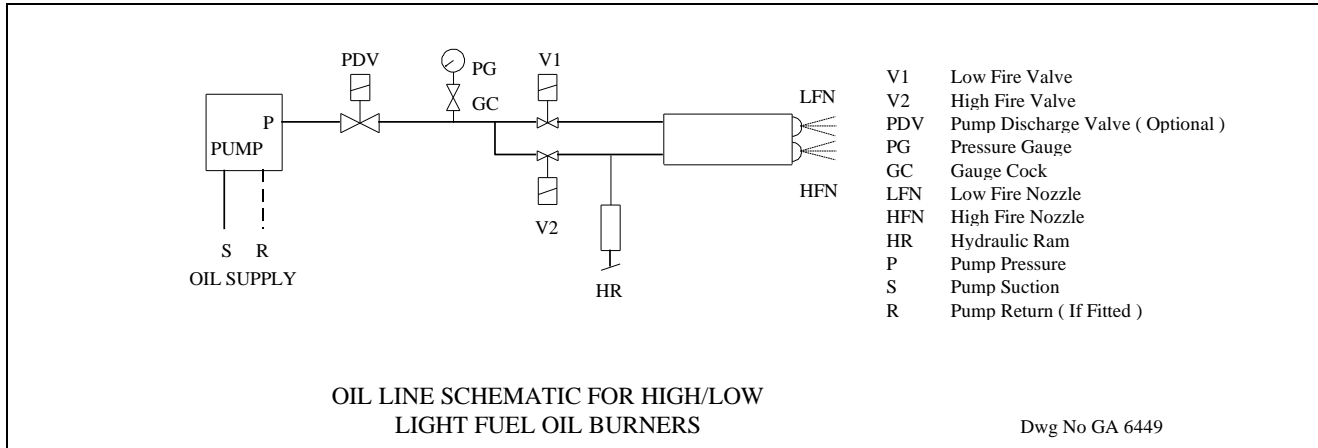
OIL PUMP &
MOTOR ASSEMBLY

Approved

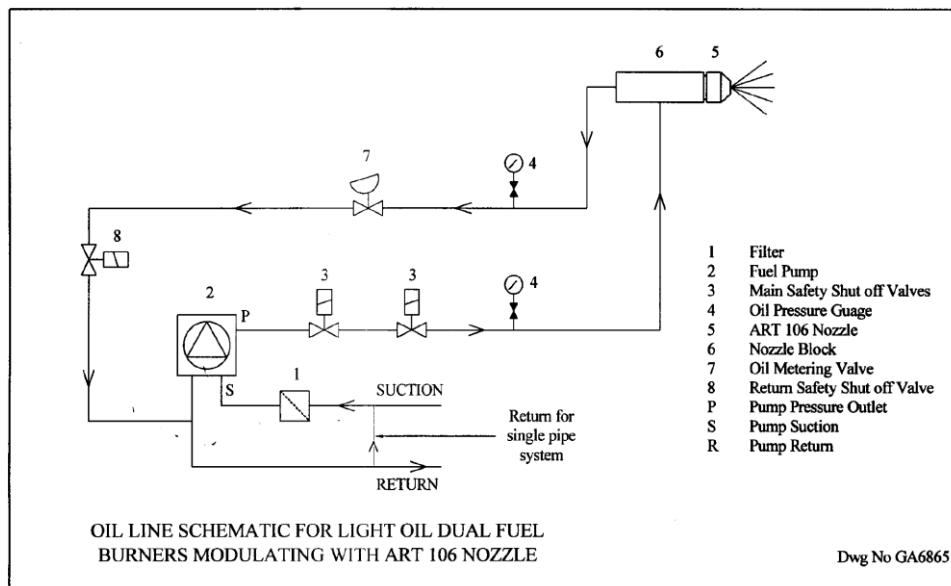
ECN	REV	CREATED	APP	DATE	REMOVE ALL SHARP EDGES AND BURRS	DUNPHY	MATERIAL:	DRAWN BY:	DESCRIPTION: TL2.155 MULTI-OIL GENERAL ARRANGEMENT WITH ELECTRONIC MODULATION	A3
-	0	LLR	LLR	21/06/2018			FINISH:	LLR		
THIS DRAWING IS COPYRIGHT & IS THE PROPERTY OF DUNPHY COMBUSTION LTD. IT MUST NOT BE USED OR REPRODUCED WITHOUT THE EXPRESSED PERMISSION & LICENCE OF DUNPHY COMBUSTION LTD						DUNPHY COMBUSTION LTD QUEENSWAY, ROCKDALE, ENGLAND DL11 2SL TEL: 01706 645217 FAX: 01706 655512	UNLESS OTHERWISE STATED, ALL DIMENSIONS IN mm GENERAL TOLERANCE UNLESS OTHERWISE STATED MACHINING ±0.1 FABRICATION ±1.0	DATE: 21/06/2018	REVISION: 0	SHEET: 1 of 2
							QUOTE No.:	SCALE: 1:20	PROJECTION 3rd ANGLE	

BURNER RATING GRAPH & SCHEMATICS

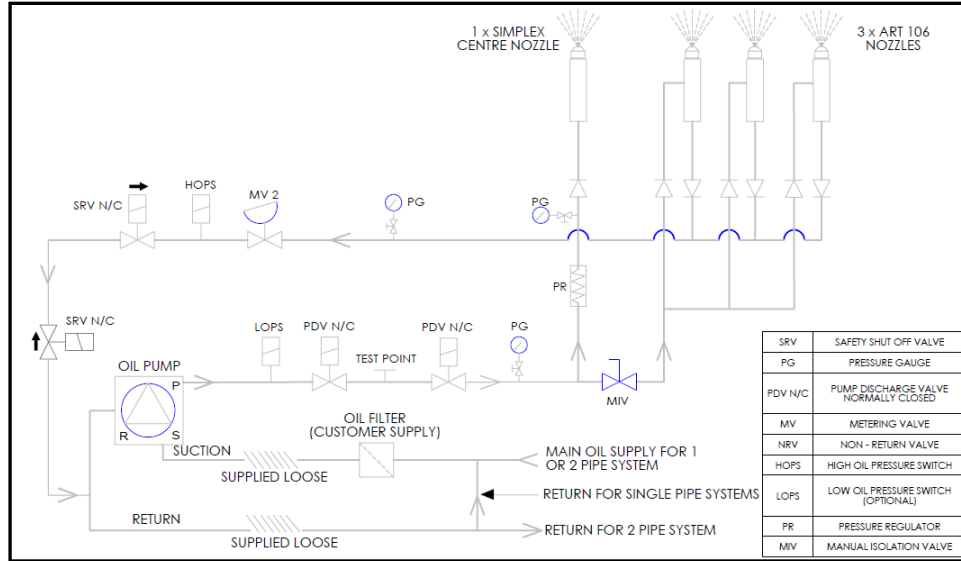
TYPICAL SCHEMATIC FOR HIGH/LOW LIGHT OIL BURNERS



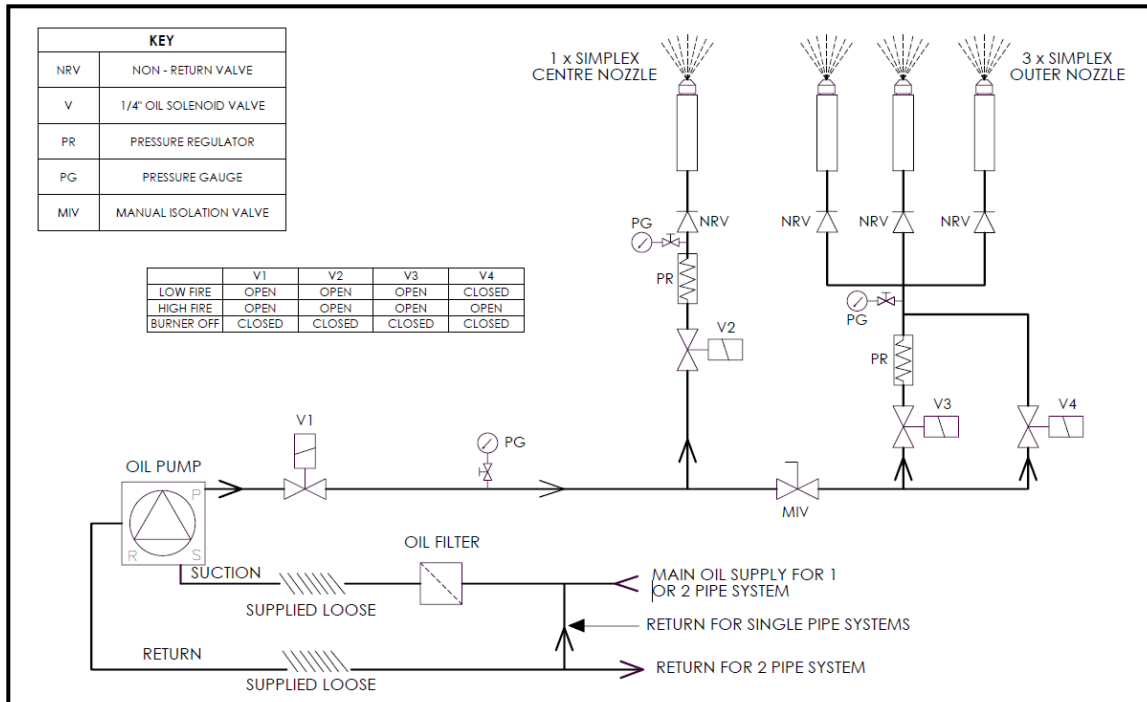
TYPICAL OIL LINE SCHEMATIC FOR LIGHT OIL DUAL FUEL BURNERS MODULATING WITH ART 106 NOZZLE



TYPICAL SCHEMATIC FOR MODULATING MULTI NOZZLE SYSTEM BURNER FIXED CENTRAL NOZZLE



TYPICAL SCHEMATIC FOR HIGH/LOW MULTI NOZZLE SYSTEM BURNER FIXED CENTRAL NOZZLE

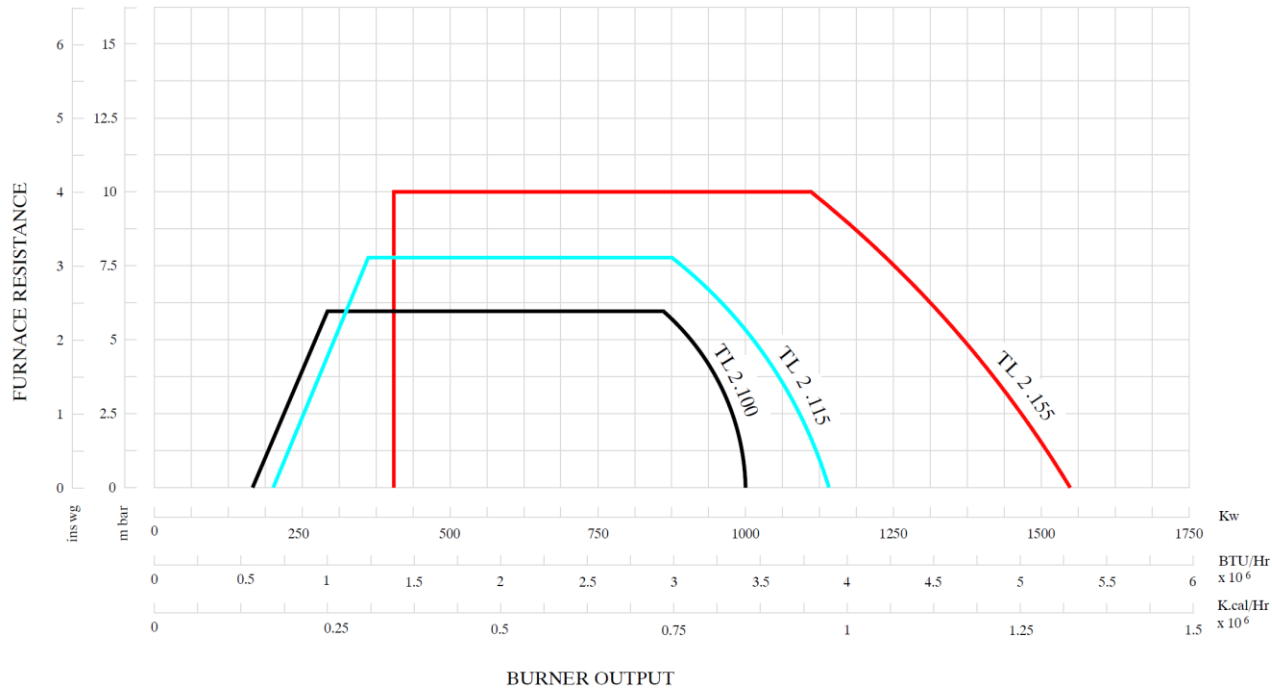


STANDARD SPECIFICATION DATA

BURNER TYPE	Firing Rate kW		Oil Consumption (kg/hr)*1		FIRING MODE OPTIONS		Fan Motor kW	Pump Motor kW	Voltage	Hz	Ph	Running Current	Starting Current	Weight
	MIN	MAX	MIN	MAX	High / Low	Electronic Modulation*2								
TL2.100 Z	160	1000	13	79	✓	✓	1.1	0.55	380-420	50	3	5 A	17 A	94
TL2.115 Z	200	1115	16	89	✓	✓	1.5	0.55	380-420	50	3	6.5 A	32 A	95
TL2.155 Y	400	1550	32	123	✓	✓	2.2	0.55	380-420	50	3	7.5 A	41 A	102

*1 – Based on Gas Oil C.V 12.6kW/kg

*2 - Fitted with a Ratiotronic 6000 system



Dunphy Combustion Ltd. has a policy of continuous development and reserve the right to change prices and specifications without prior notice