



+44 (0)1706 649217



+44 (0)1706 655512



www.dunphy.co.uk

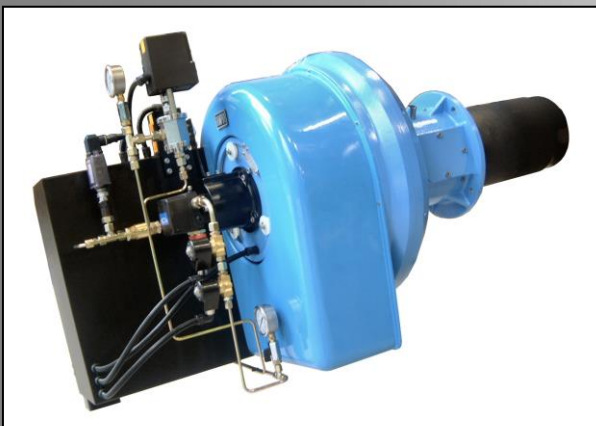
DATA SHEET

Model: TL1

Revision Date: September 2015

Output: 170 – 650 kW

Revision Number: DS.TL1.10

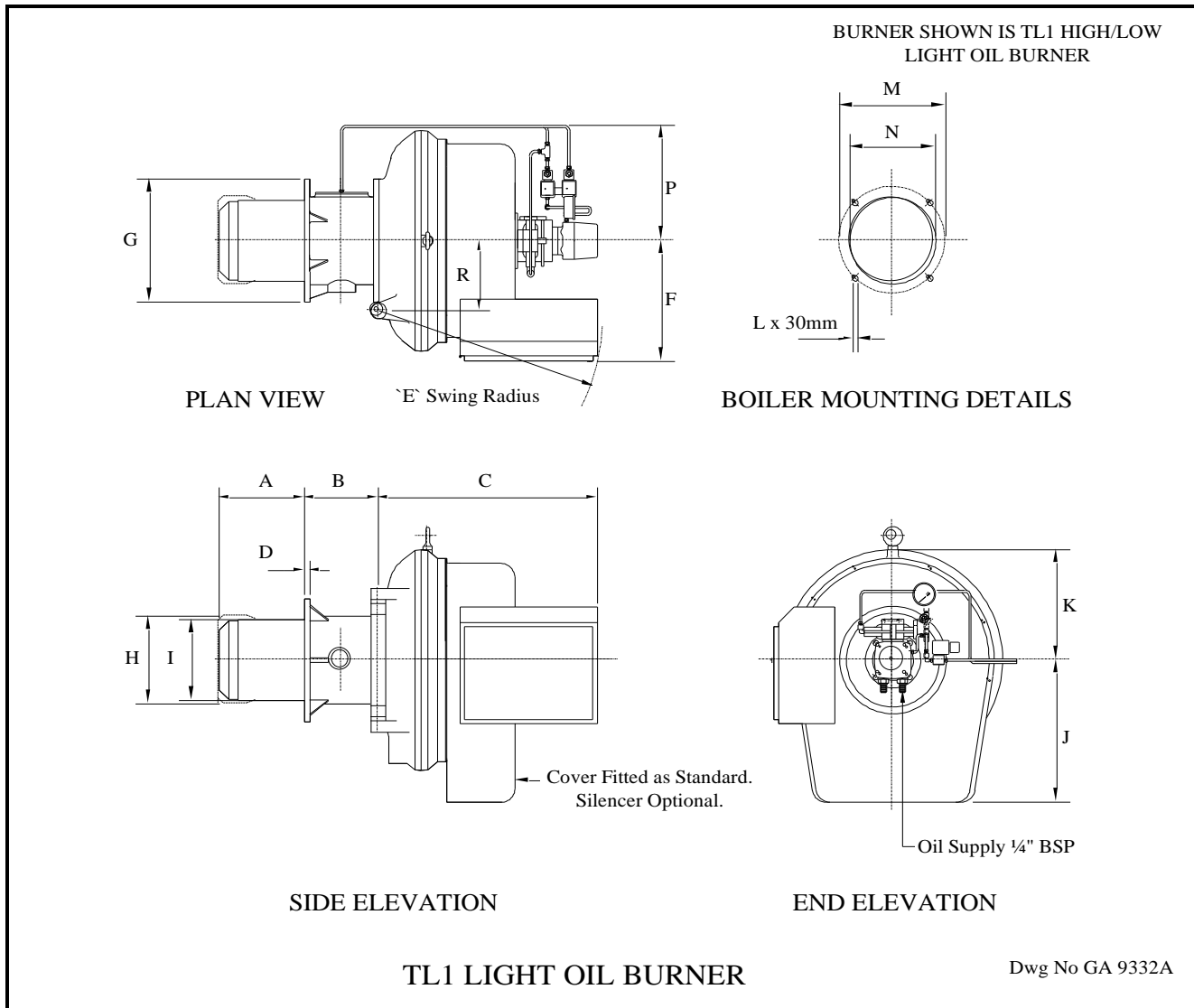


- ◆ All models approved to current British and European Standards.
- ◆ Baumuster number for TL1 series is 5G 113/93.



FM 24868

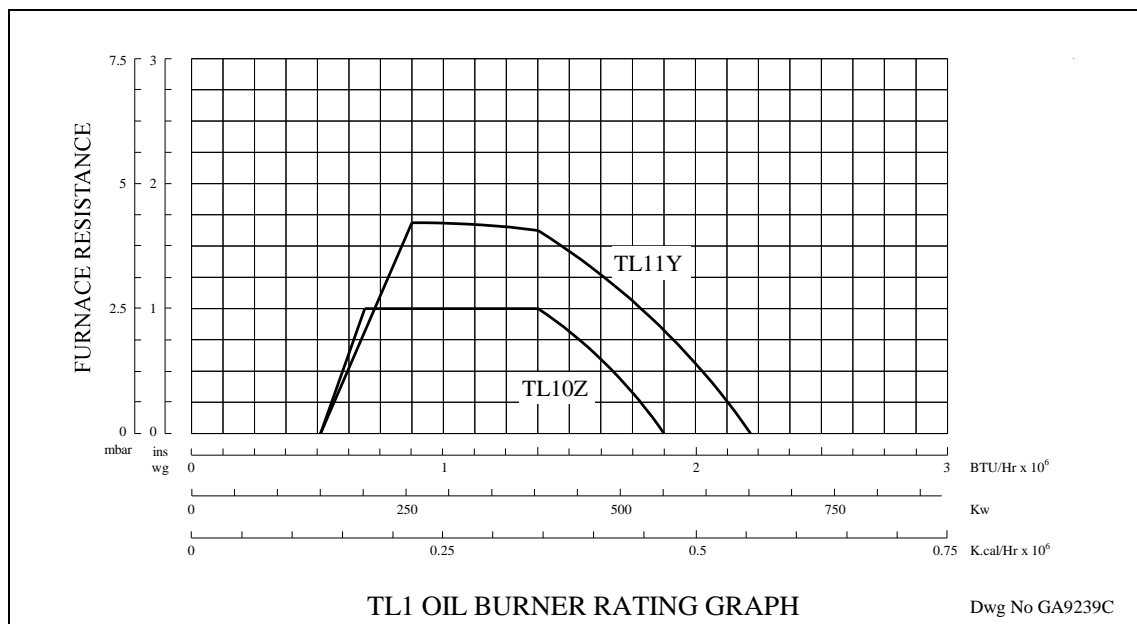
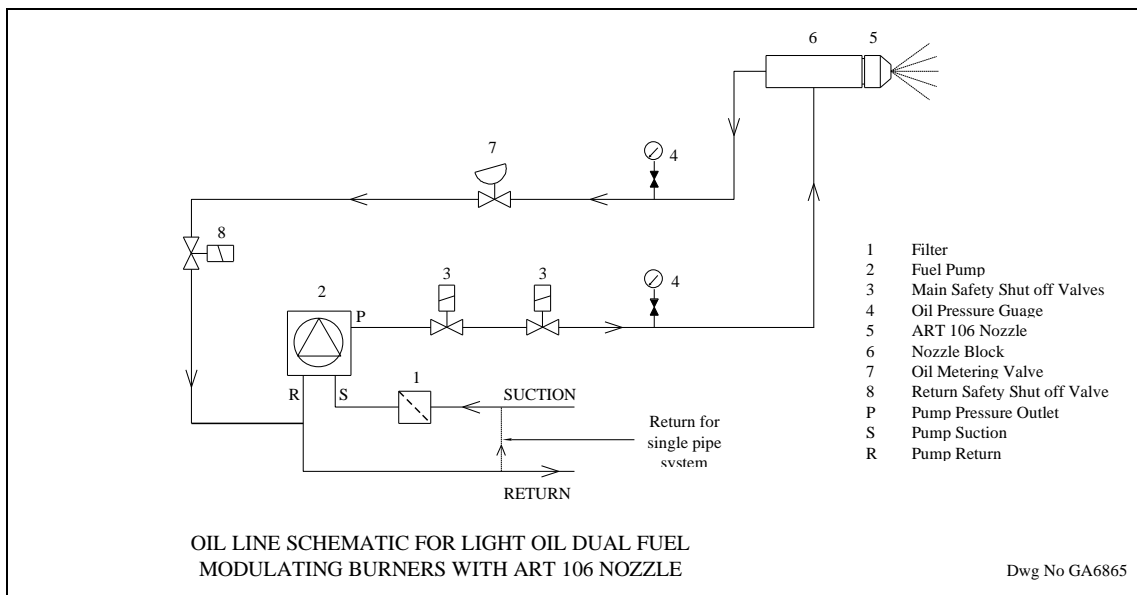
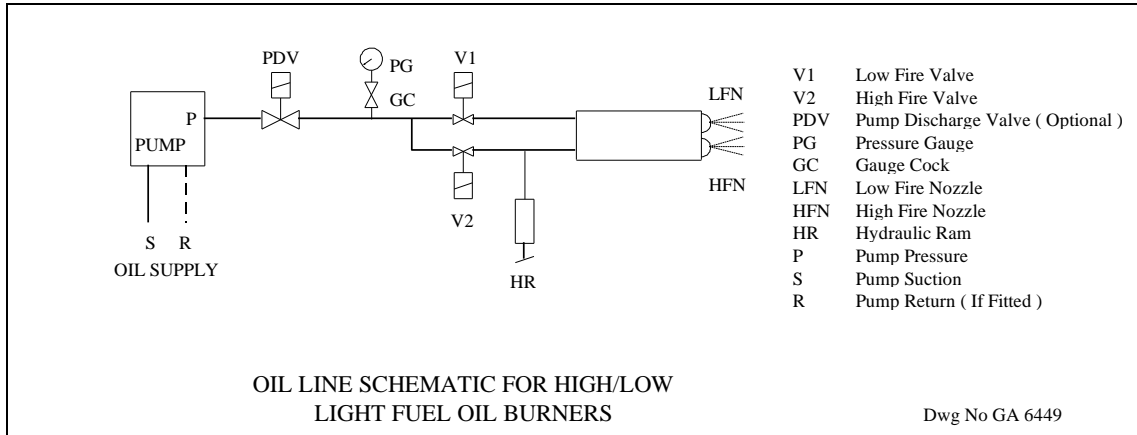
BURNER DIMENSIONS



	A	B	C	D	E	F	G	H	I	J	K	L	M	N	P	R
TL10Z	230	143	550	14	575	320	250		165	300	200	M10	222	175	220	136
TL11Y	230	143	550	14	575	320	250	190		300	200	M10	222	200	220	136

- ◆ All dimensions in mm unless otherwise stated.
- ◆ Dimension 'A' is the minimum standard dimension and can be varied to suit application, requirements should be stated when unit is ordered.
- ◆ Dimension 'E' is the average swing radius; this can vary on non-standard burners.
- ◆ Burner shown is left-hand hinge; right-hand hinge is an available option.
- ◆ Please check the issue number to ensure validity.

BURNER RATING GRAPH & SCHEMATICS



STANDARD SPECIFICATION DATA

BURNER TYPE	Firing Rate kW		FIRING MODE OPTIONS				Motor kW	Voltage	Hz	Ph	Running Current	Starting Current	Weight
	MIN	MAX	High / Low Mod Gas	High / Low	Mechanical Modulation	Electronic Modulation*							
TL10Z	170	550		✓	✓	✓	0.75	380-420	50	3	4 Amp	11 Amp	60
TL11Y	170	650		✓	✓	✓	0.75	380-420	50	3	4 Amp	11 Amp	68

* Fitted with a Ratiotronic 3000 system

Dunphy Combustion Ltd. has a policy of continuous development and reserve the right to change prices and specifications without prior notice