



+44 (0)1706 649217



+44 (0)1706 655512



www.dunphy.co.uk

DATA SHEET

Model: TLO2

Revision Date: September 2015

Output: 45 – 240 kW

Document Number: DS.TL02.09

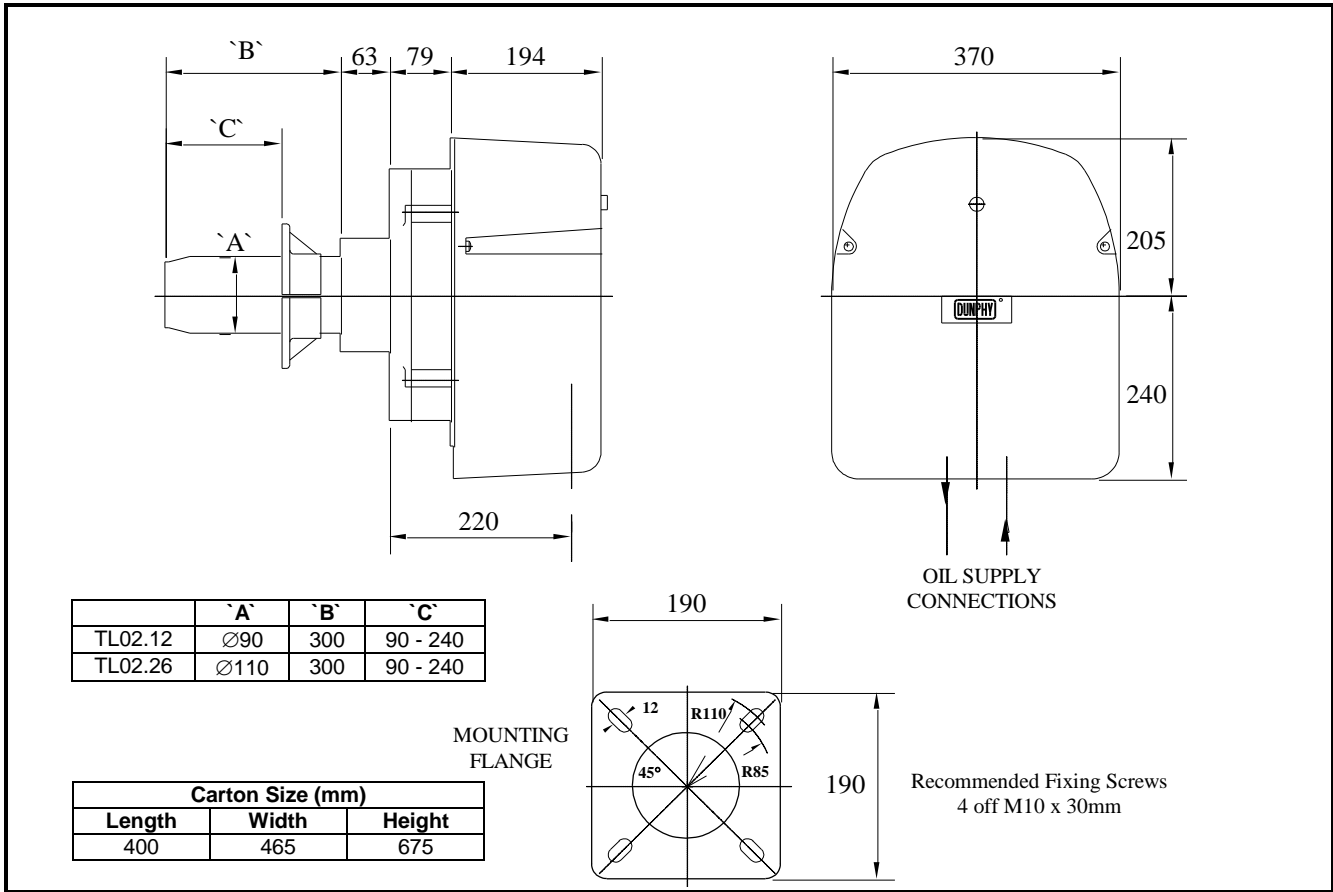


- ◆ All models approved to current British and European Standards.
- ◆ All models tested to European Standard EN267 - 'Methods of test for Atomising Oil Burners of Monobloc Type'.
- ◆ Baumuster number for TL02 Series burners is 94.07bDX.
- ◆ All burners in the T.O. range are of the fan assisted, nozzle mix type and operation is fully automatic expanding flame start.
- ◆ Air inlet is suitable for connection to a ducted fresh air supply.
- ◆ Suitable for operation on light distillate oil up to 5.0 cSt at 40°C (Class D).



FM 24868

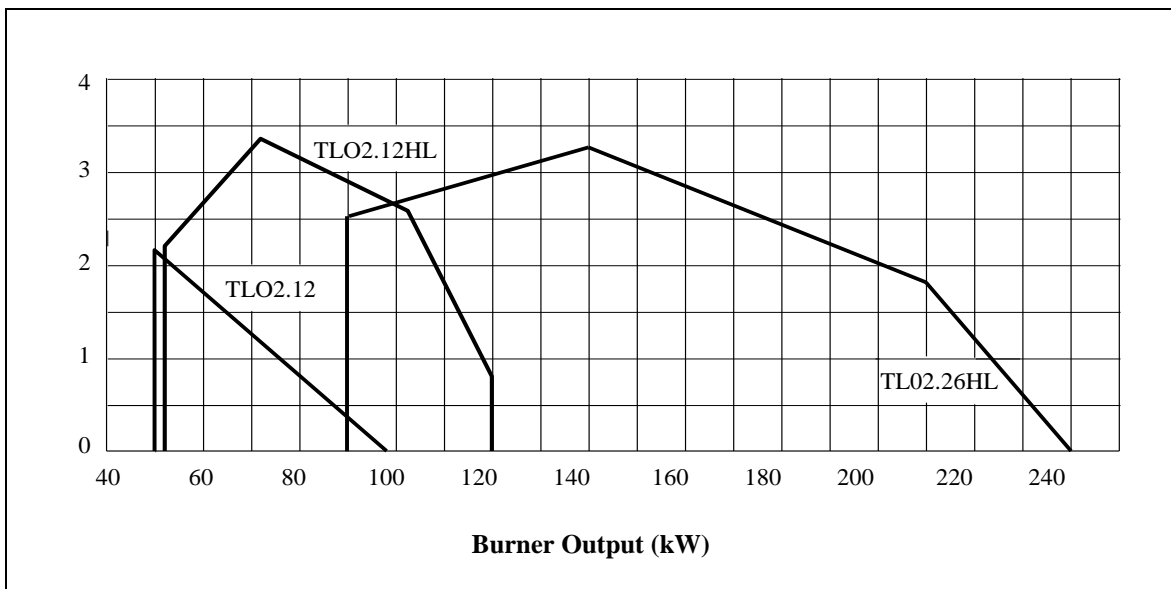
BURNER DIMENSIONS



** The burner gas train may be positioned as shown or rotated to the left or right as required.

- ◆ All dimensions in mm unless otherwise stated.
- ◆ Please check the issue number to ensure validity.

BURNER RATING GRAPH



SPECIFICATION DATA

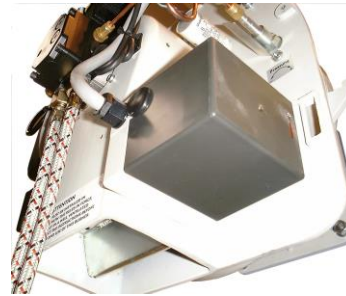
BURNER TYPE	Firing Rate kW		Burner Control	FCAD *	Control Input Type	Max l / hr@ oil press(bar)	Voltage	Hz	Ph	Motor Watts	Running Current	Starting Current	Weight	Order Code
	MIN	MAX												
TL02.12	45	95	On / Off with fixed air damper	No	On/Off Control Stat	12.6l/hr@25bar	220-240	50	1	250	1.1 Amp	4.5 Amp	21.4kg	972010
TL02.12 D	45	95	On / Off with hydraulic air damper	Yes	On/Off Control Stat	12.6l/hr@25bar	220-240	50	1	250	1.1 Amp	4.5 Amp	21.7kg	972020
TL02.12HL D	50	120	High / Low with hydraulic air damper	No	High/Low Stat	12.6l/hr@25bar	220-240	50	1	250	1.1 Amp	4.5 Amp	21.7kg	972030
TL02.12HL	50	120	High / Low with electric air damper	Yes	High/Low Stat	12.6l/hr@25bar	220-240	50	1	250	1.1 Amp	4.5 Amp	22.5kg	972040
TL02.26	90	250	On / Off with fixed air damper	No	On/Off Control Stat	24.5l/hr@25bar	220-240	50	1	250	1.1 Amp	4.5 Amp	21.4kg	972050
TL02.26 D	90	250	On / Off with hydraulic air damper	Yes	On/Off Control Stat	24.5l/hr@25bar	220-240	50	1	250	1.1 Amp	4.5 Amp	21.7kg	972060
TL02.26HL D	90	250	High / Low with hydraulic air damper	No	High/Low Stat	24.5l/hr@25bar	220-240	50	1	250	1.1 Amp	4.5 Amp	21.7kg	972070
TL02.26HL	90	250	High / Low with electric air damper	Yes	High/Low Stat	24.5l/hr@25bar	220-240	50	1	250	1.1 Amp	4.5 Amp	21.4kg	972080

*FCAD – Fully Closing Air Damper

- High efficiency
- Quiet operation
- Adjustable burner mounting flange for different furnace projections
- Standard 7 pin & 4 pin sockets for all electrical connections
- Flame surveillance via photocell
- Fully closing air damper on On/Off models fitted with hydraulic ram, thus eliminating boiler cooling through chimney buoyancy
- Cost effective high/low model using hydraulic ram



- Simple damper control on fixed air damper models



- Electric servomotor damper offering high/low and fully closing air damper facilities

- 1 or 2 pipe oil system configuration available



Dunphy Combustion Ltd. have a policy of continuous development and reserve the right to change specifications without prior notice