



+44 (0)1706 649217



+44 (0)1706 655512



www.dunphy.co.uk

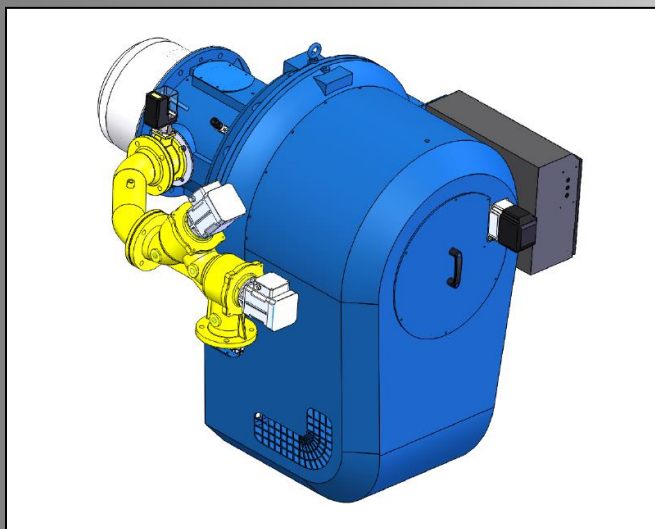
DATA SHEET

Model: TG5

Revision Date: June 2018

Output: 500 – 10500 kW

Revision Number: DS.TG5.20



- ◆ All models approved to current British and European Standards.
- ◆ All burners in the T.G. range are of the fan assisted, nozzle mix type and operation is fully automatic.
- ◆ All models have been independently tested to the European Standard pr EN676 - 'Automatic forced draught burners for gaseous fuels.'
- ◆ CE approval numbers for the TG5 Series burners are:
 - ◆ TG5.800/1000 - CE 679311

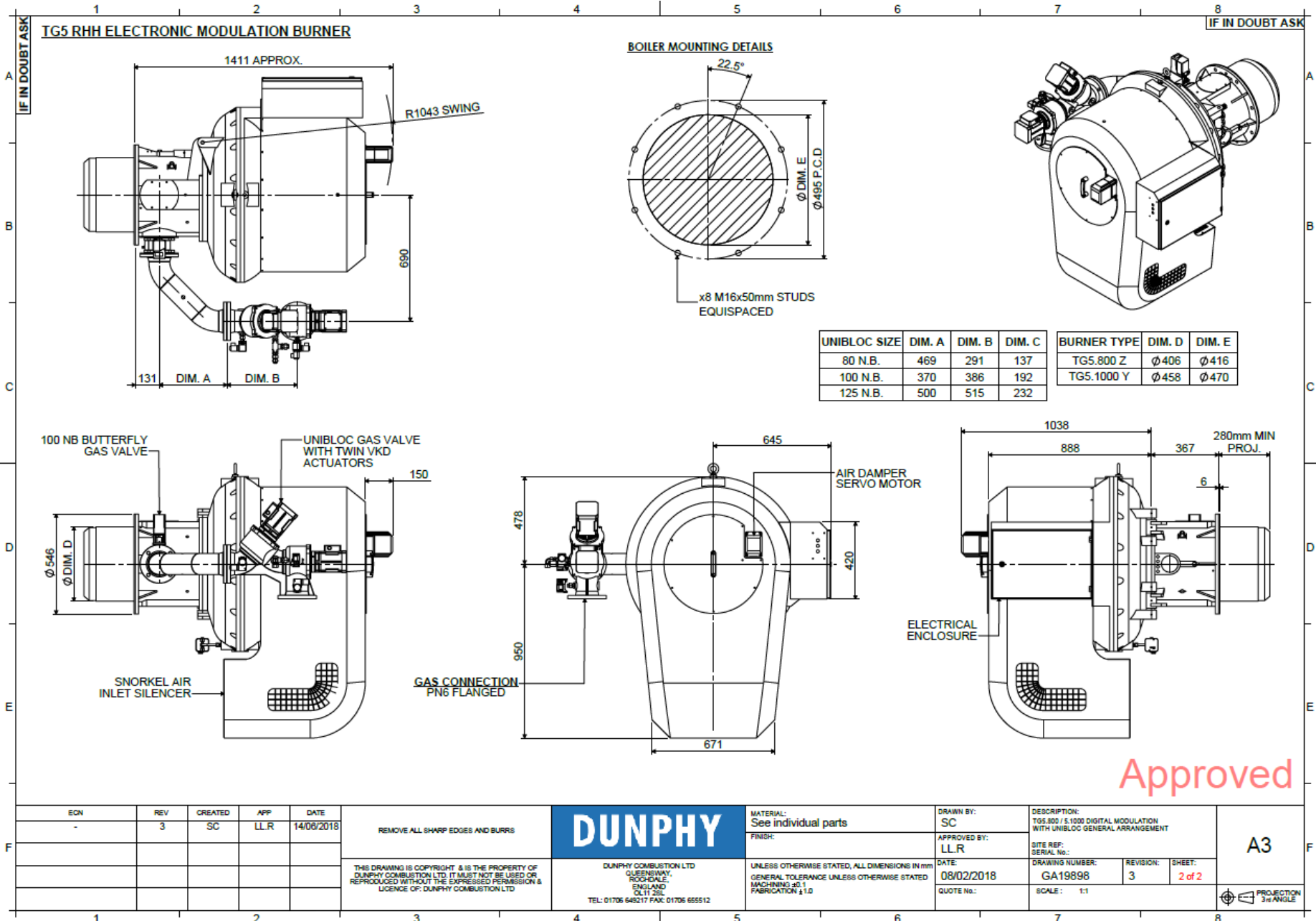


FM 24868

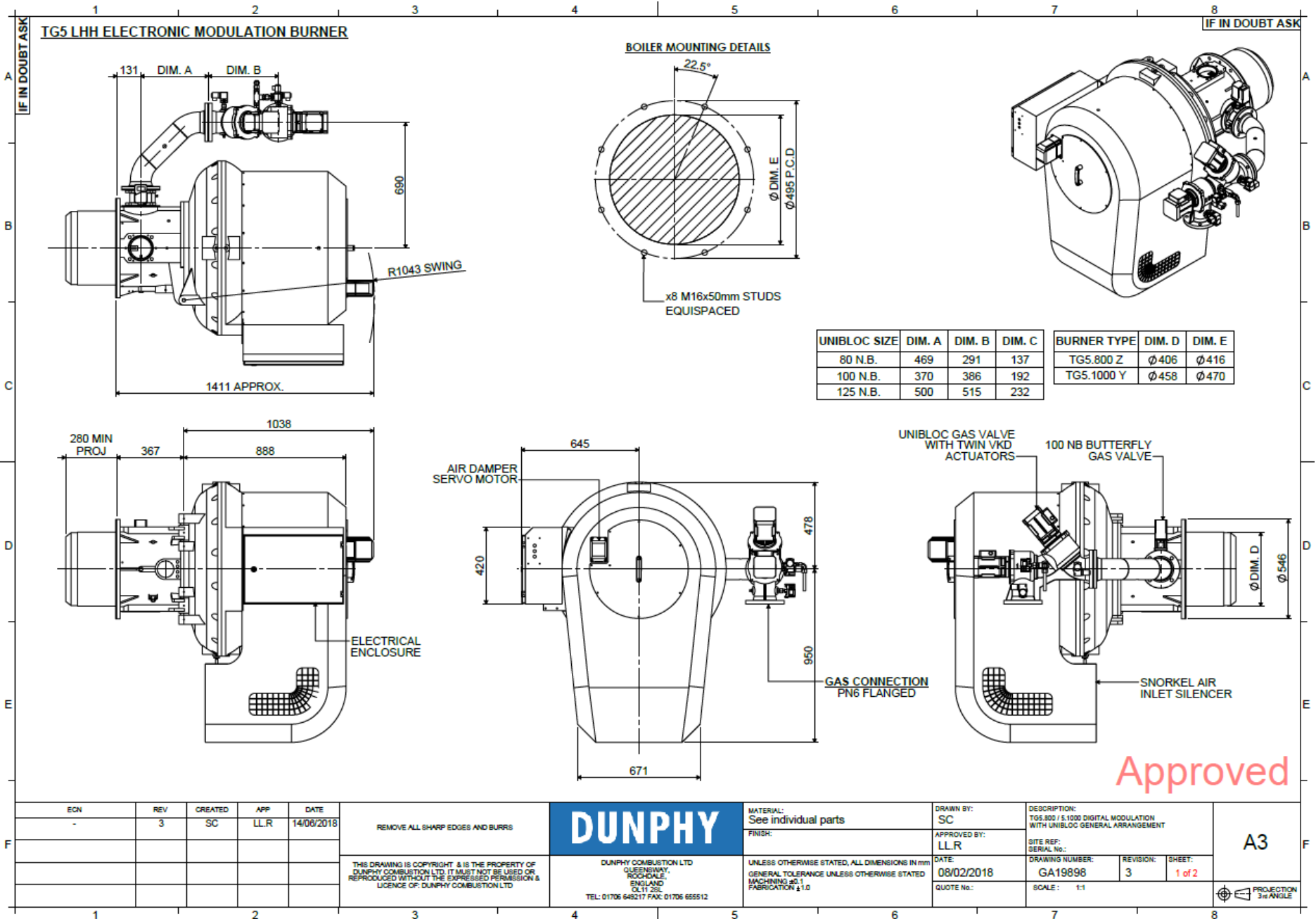
BURNER DIMENSIONS

- ◆ Drawings shown on the following pages.
- ◆ All dimensions in mm unless otherwise stated.
- ◆ The minimum standard dimension for 'PROJ' is 280mm. However, it can be varied to suit application. Requirements should be stated when unit is ordered.
- ◆ Dimension 'E' is the average swing radius; this can vary on non-standard burners.
- ◆ Please check the issue number to ensure validity.

ELECTRONIC MODULATION - RHH WITH UNIBLOC GAS VALVE



ELECTRONIC MODULATION - LHH WITH UNIBLOC GAS VALVE

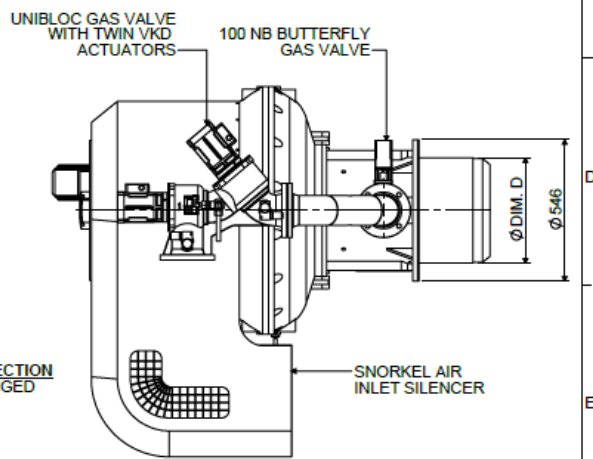
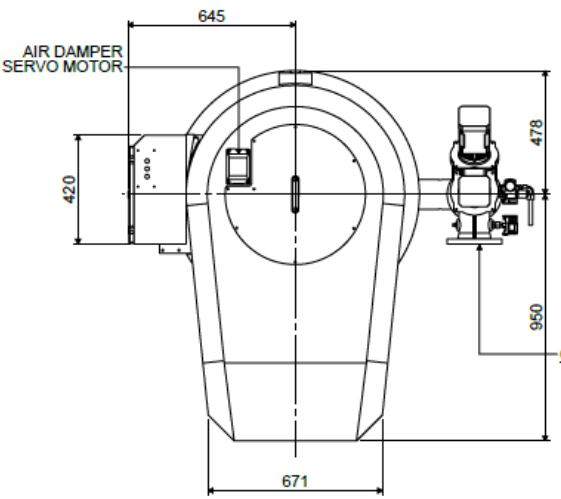
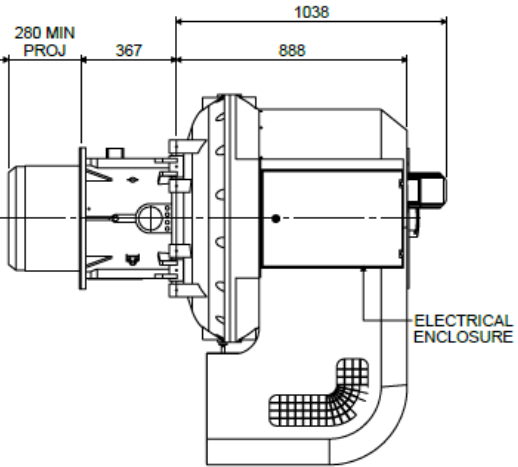
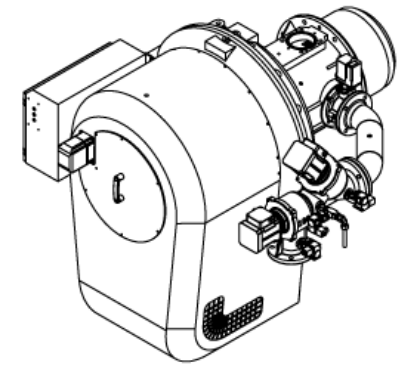
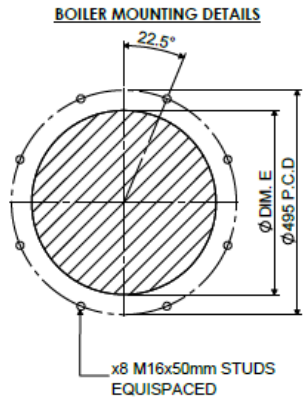
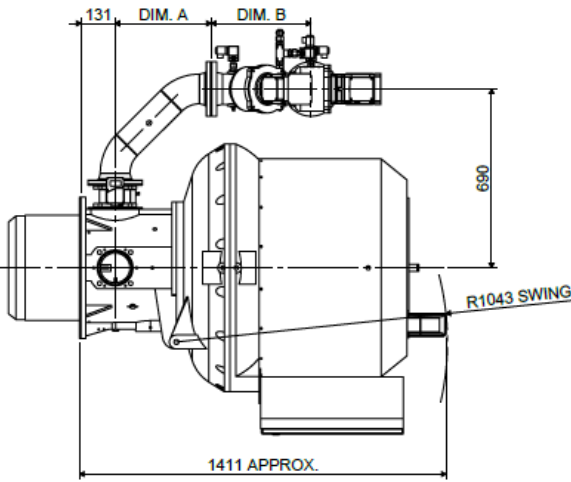


IF IN DOUBT ASK

IF IN DOUBT ASK

A
B
C
D
E
F

A
B
C
D
E
F



ECN	REV	CREATED	APP	DATE
-	3	SC	LLR	14/06/2018

REMOVE ALL SHARP EDGES AND BURRS

THIS DRAWING IS COPYRIGHT & IS THE PROPERTY OF DUNPHY COMBUSTION LTD. IT MUST NOT BE USED OR REPRODUCED WITHOUT THE EXPRESSED PERMISSION & LICENCE OF DUNPHY COMBUSTION LTD

DUNPHY

DUNPHY COMBUSTION LTD
QUEENSWAY,
ROCKDALE,
ENGLAND
DL11 2SL
TEL: 01706 648217 FAX: 01706 655512

MATERIAL: See individual parts

FINISH:

UNLESS OTHERWISE STATED, ALL DIMENSIONS IN mm

GENERAL TOLERANCE UNLESS OTHERWISE STATED

MACHINING ±0.1

FABRICATION ±1.0

DRAWN BY: SC

APPROVED BY: LLR

DATE: 08/02/2018

QUOTE No.:

DESCRIPTION: TG5.800 / 5.1000 DIGITAL MODULATION WITH UNIBLOC GENERAL ARRANGEMENT

SITE REF: SERIAL No.:

DRAWING NUMBER: GA19898

REVISION: 3

SHEET: 1 of 2

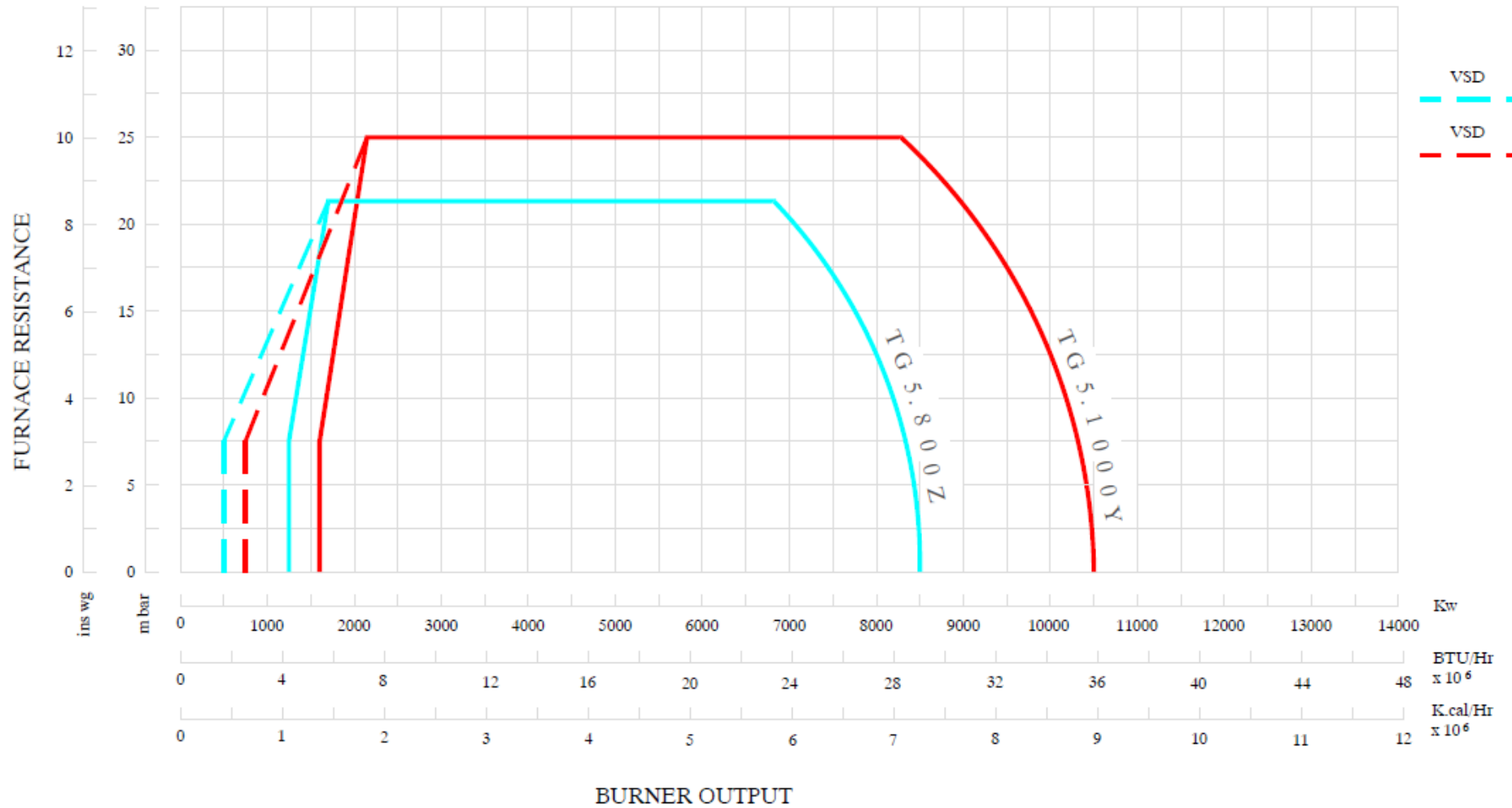
SCALE: 1:1

A3

PROJECTION 3rd ANGLE

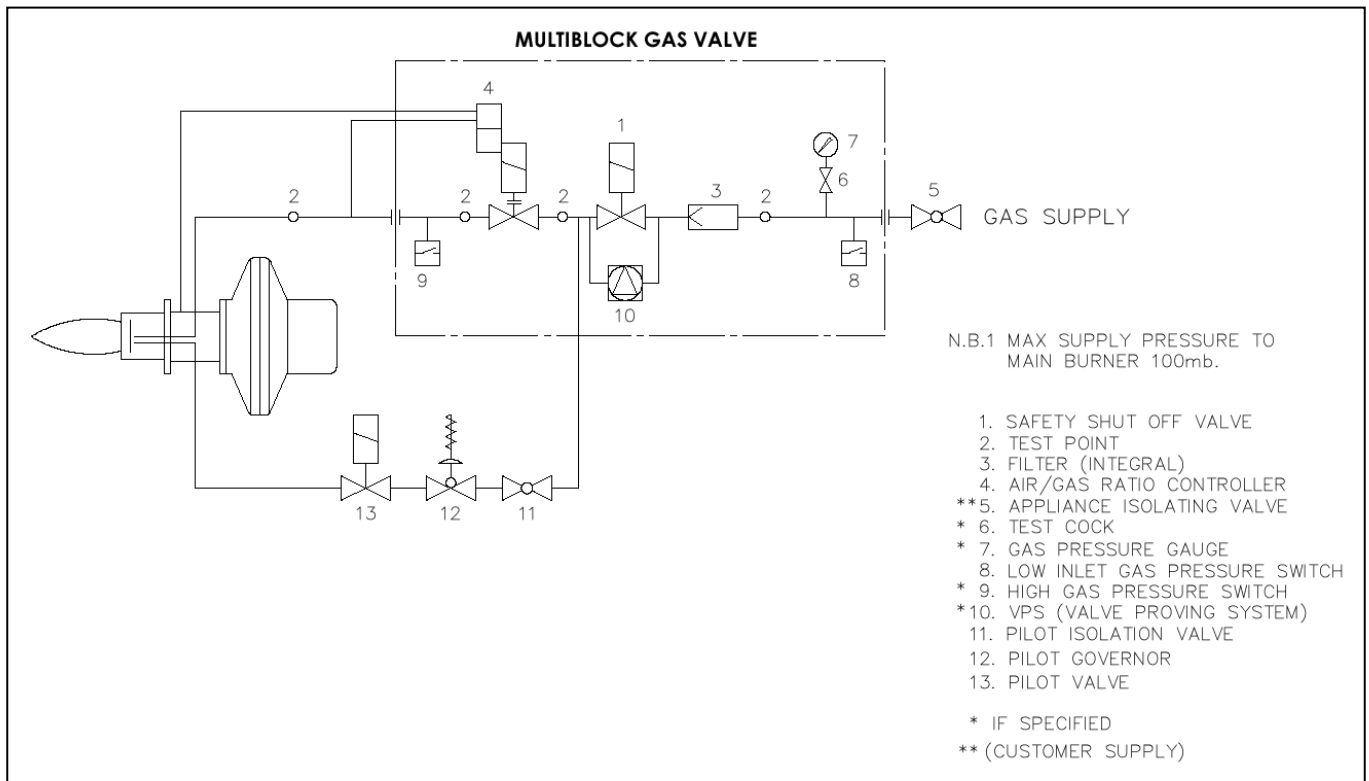
1 2 3 4 5 6 7 8

BURNER RATING GRAPH

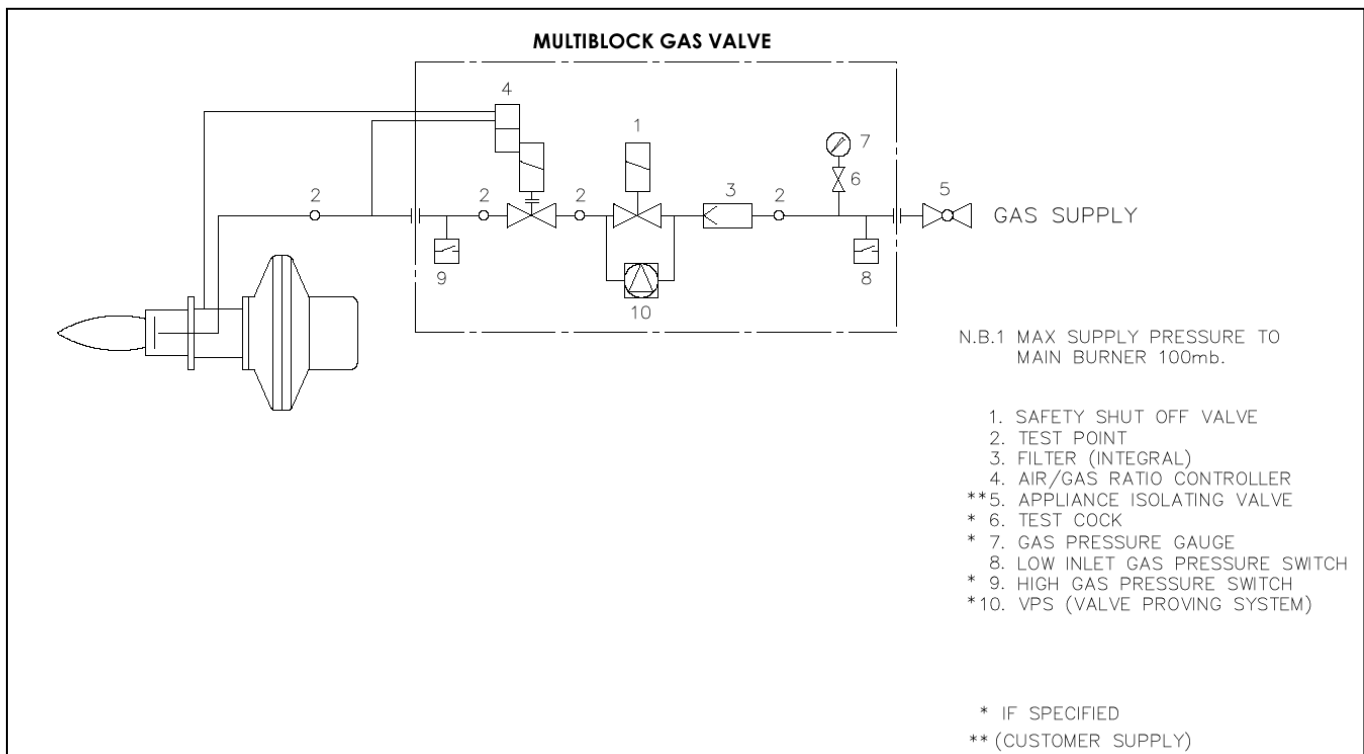


BURNER SCHEMATICS – ELECTRO / PNEUMATIC MODULATING

Typical Gas Line Schematic for Electro / Pneumatic Modulating Burners with Gas Pilot Line

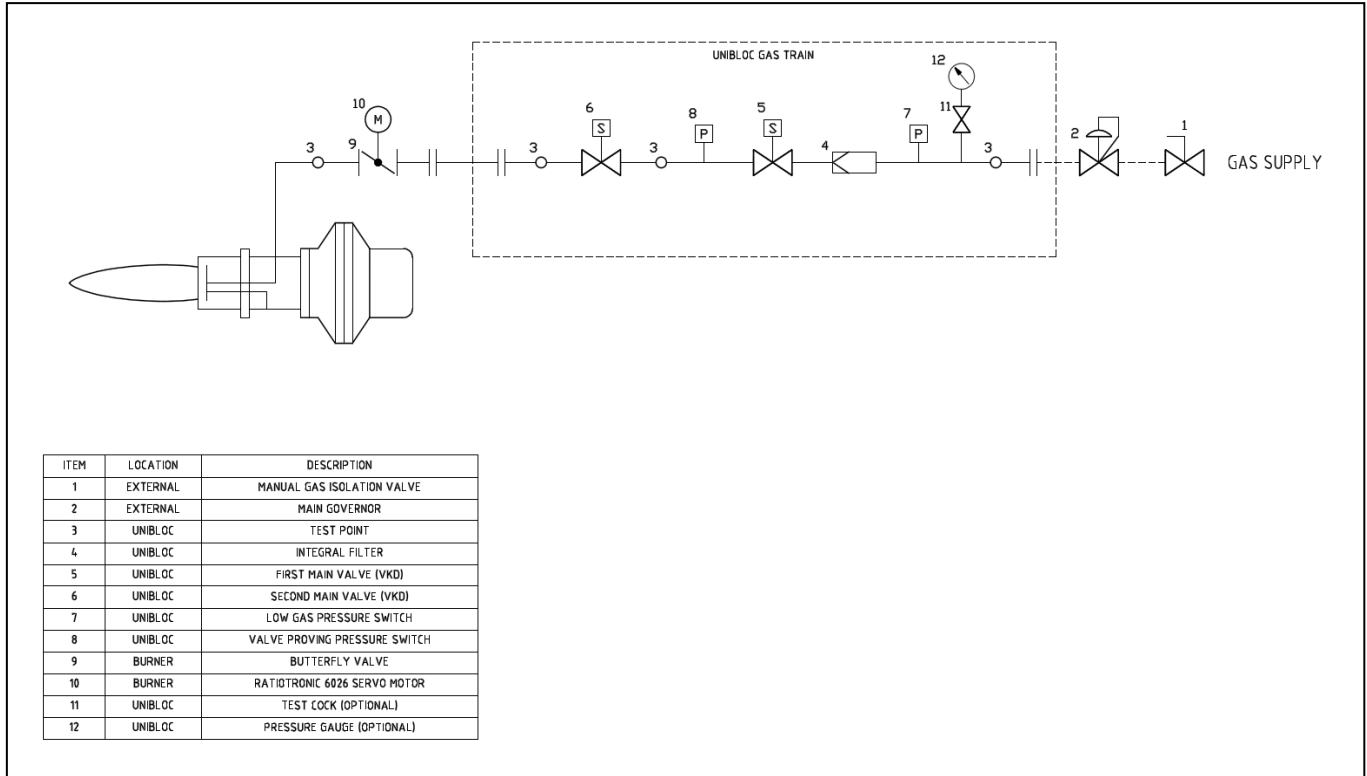


Typical Gas Line Schematic for Electro / Pneumatic Modulating Burners without Gas Pilot Line

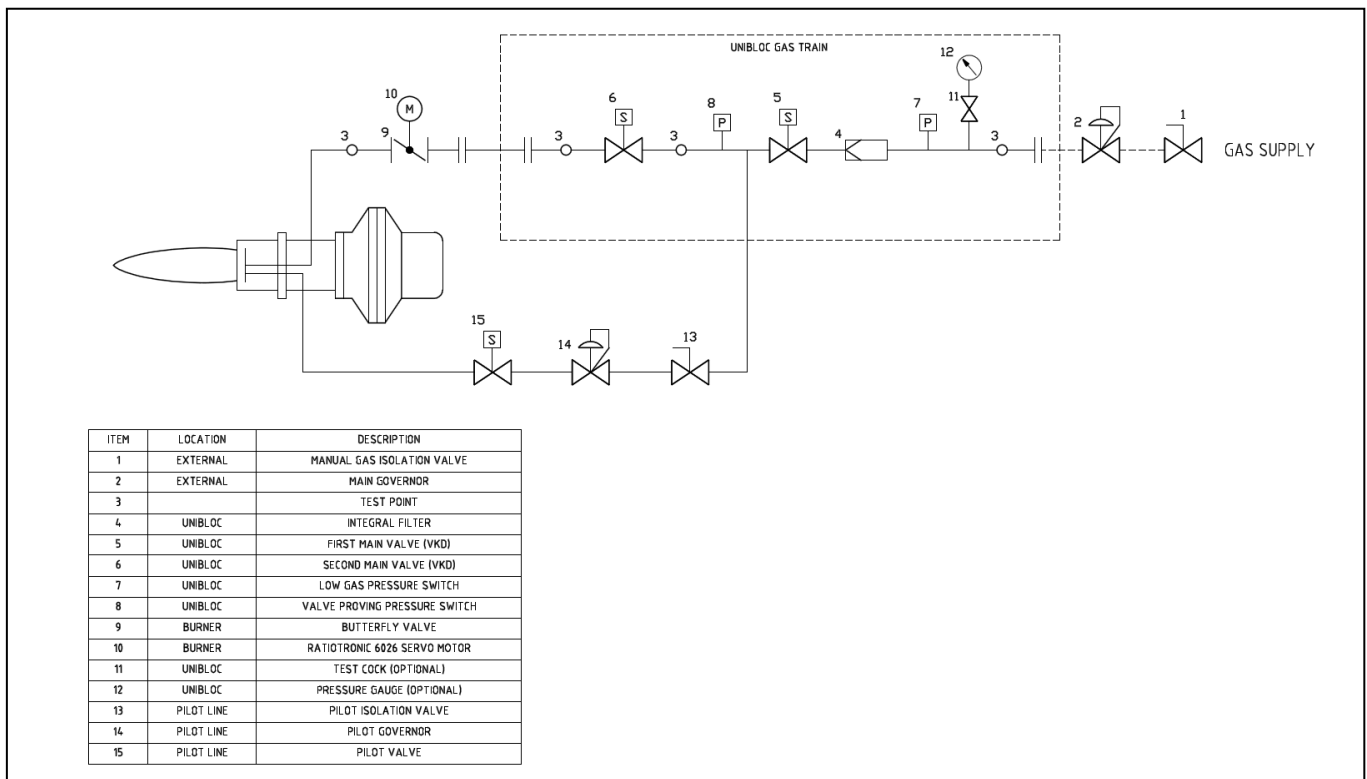


BURNER SCHEMATICS - ELECTRICAL MODULATING

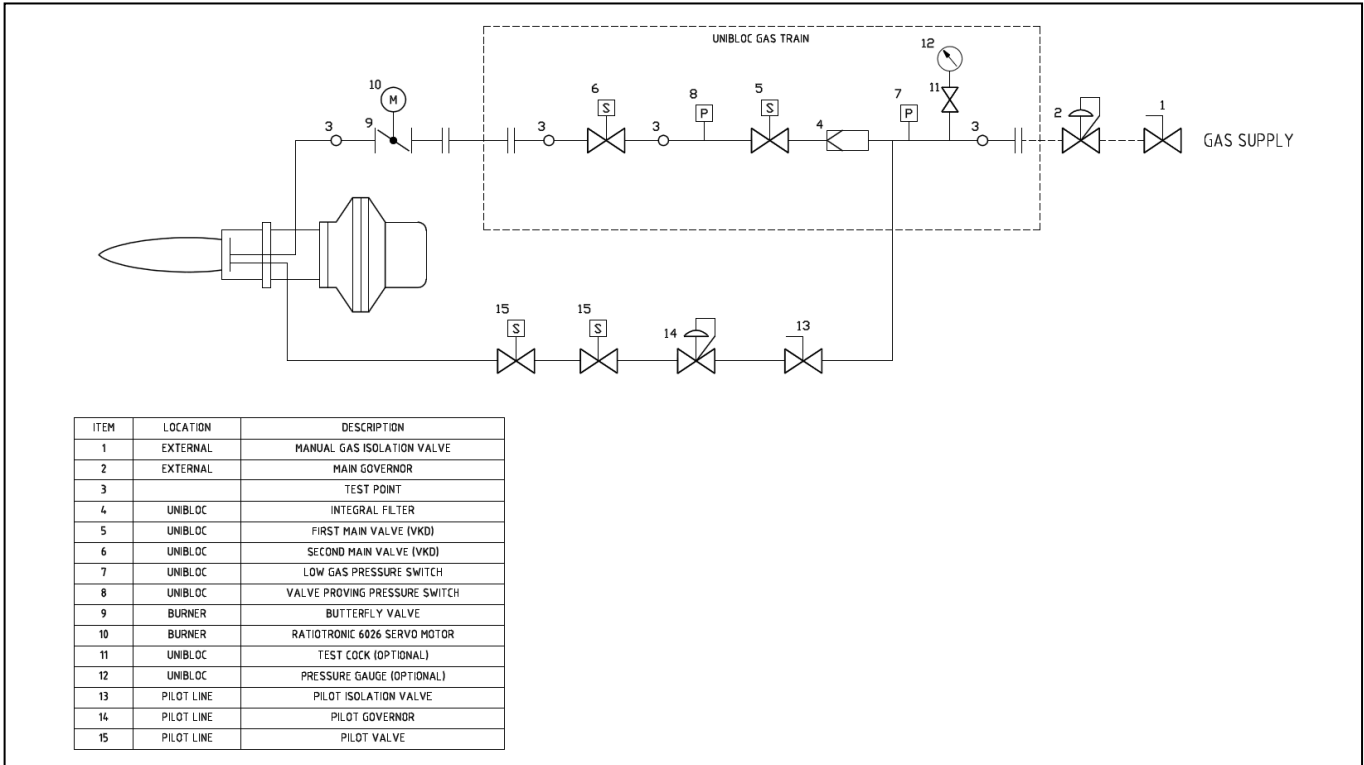
Typical Gas Line Schematic for Electronic Modulating Burners without Gas Pilot Line



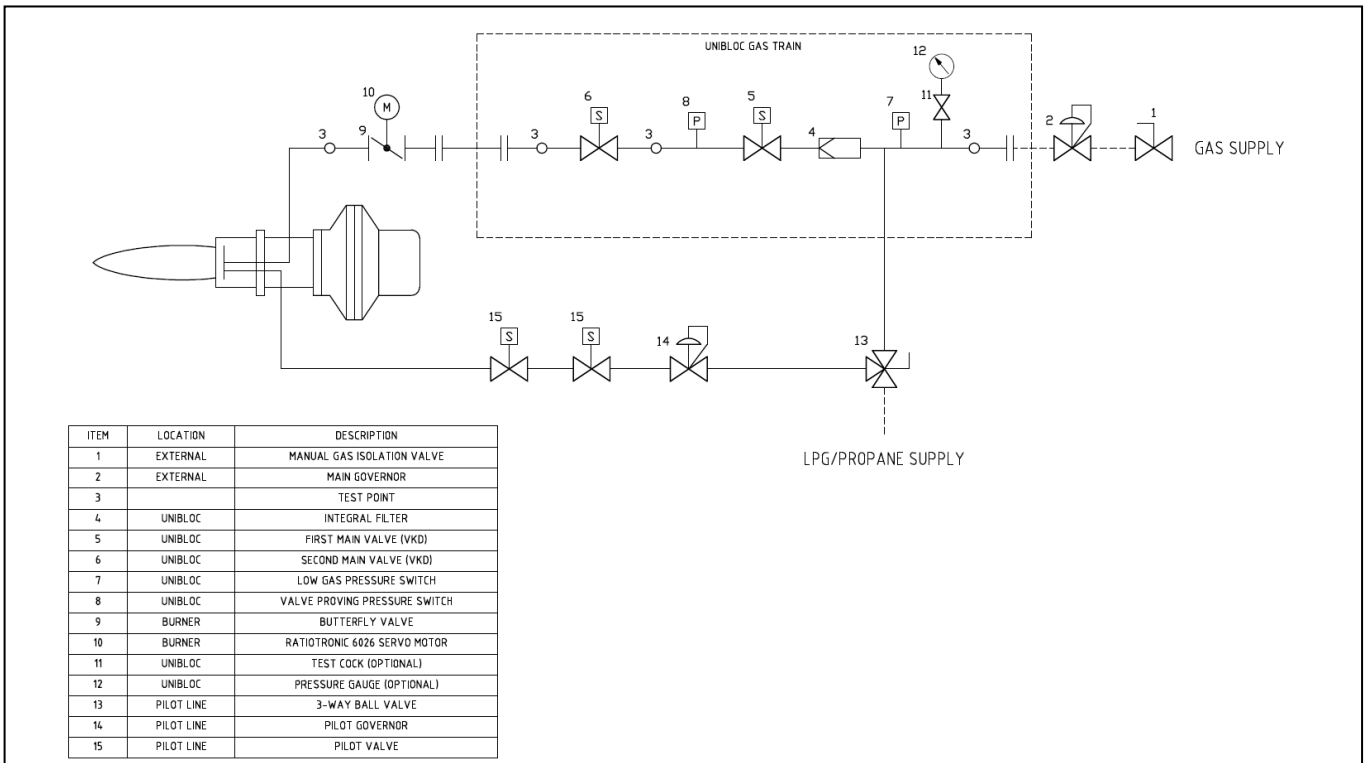
Typical Gas Line Schematic for Electronic Modulating Burners with Gas Pilot Line (Single Valve)



Typical Gas Line Schematic for Electronic Modulating Burners with Gas Pilot Line (Twin Valve)



Typical Gas Line Schematic for Electronic Modulating Burners with Gas Pilot Line (Twin Valve) and Optional LPG / Propane Connection



STANDARD SPECIFICATION DATA

BURNER TYPE	Firing Rate kW		GAS VOLUM (m3/HR) *(1)		FIRING MODE OPTIONS		Motor kW	Voltage	Hz	Ph	Running Current	Starting Current (without inverter) *4	Weight (Kg)
	MIN*3	MAX	MIN	MAX	Electro / Pneumatic Modulation	Electronic Modulation* (2)							
TG5.800Z	500	8500	47.8	817	✓	✓	18.5	380-420	50	3	44 Amp	107 Amp	660
TG5.1000Y	750	10500	71.7	1010	✓	✓	22	380-420	50	3	54 Amp	136 Amp	680

*1 – Based on Nat. Gas C.V 10.4 kW/m3

*2 - Fitted with a Ratiotronic 6000 system

*3 – Based on 10:1 turn down fitted with VSD

*4 - When fitted with VSD the starting current is 0 Amps

COMBUSTION HEAD

The Dunphy combustion head incorporates a two-stage fuel/air mixing system which eliminates low frequency resonance and allows maximum combustion efficiency with minimum emission levels.

This system combined with smooth ignition and extreme reliability makes Dunphy combustion equipment the most sensible choice for all heating and process applications.

ULTRA LOW NO_x BURNERS

All Dunphy T-Series burners are fitted with low NO_x combustion heads as standard equipment.

As an optional extra all burners in this range can be fitted with a flue gas recirculation system to achieve ultra low NO_x emissions.

Dunphy Combustion Ltd has a policy of continuous development and reserve the right to change prices and specifications without prior notice.