



+44 (0)1706 649217



+44 (0)1706 655512



www.dunphy.co.uk

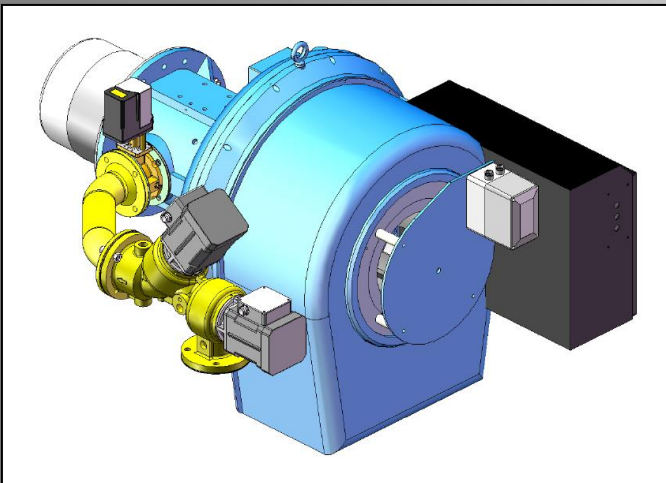
DATA SHEET

Model: TG3

Revision Date: November 2019

Output: 200 – 2950 kW

Revision Number: DS.TG3.22



- ◆ All models approved to current British and European Standards.
- ◆ All burners in the T.G. range are of the fan assisted, nozzle mix type and operation is fully automatic.
- ◆ All models have been independently tested to the European Standard BS EN676 'Automatic forced draught burners for gaseous fuels.' (Natural Gas, LPG, Biogas, Hydrogen & Waste Gases ETC)
- ◆ CE approval numbers for the TG3 Series burners are:
 - ◆ TG35/37/310 – CE 679311

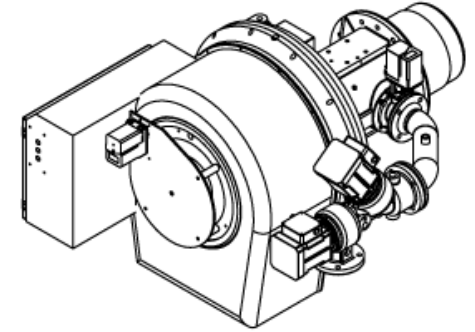
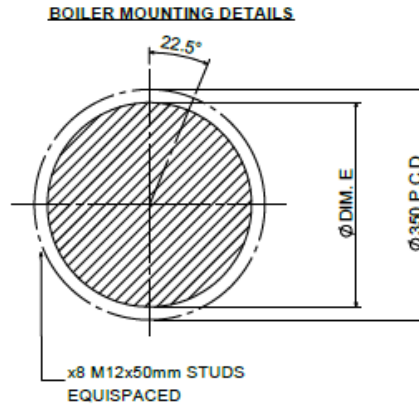
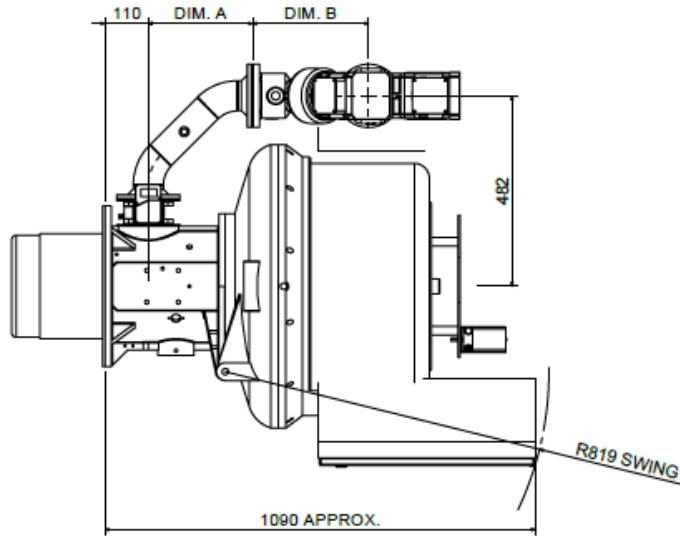


FM 24868

BURNER DIMENSIONS

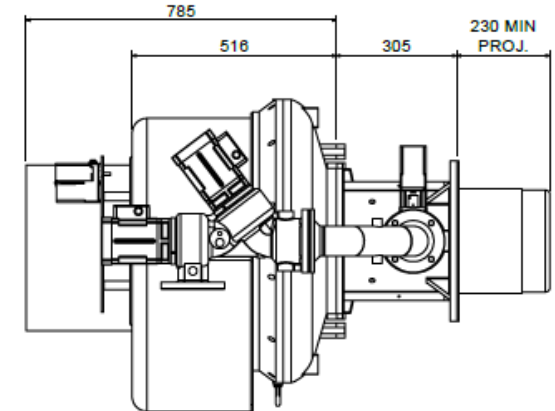
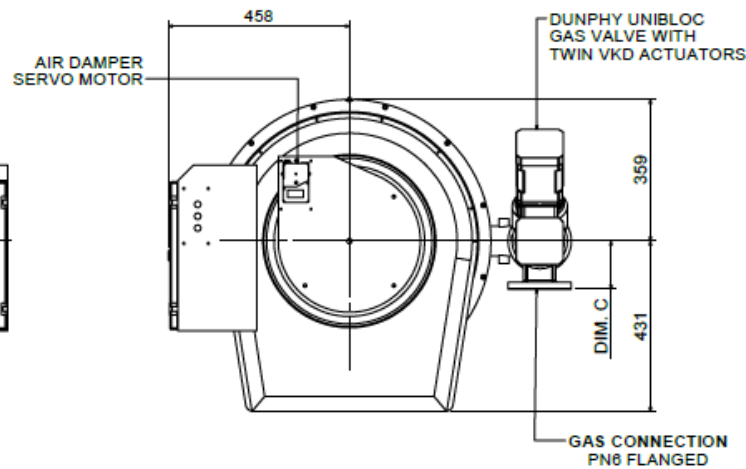
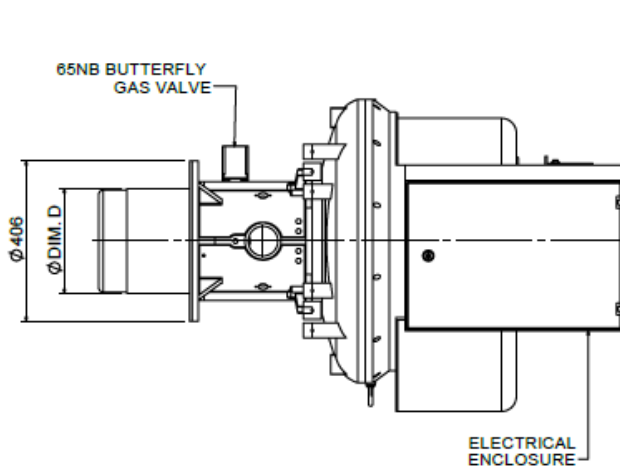
- ◆ Drawings shown on the following pages.
- ◆ All dimensions in mm unless otherwise stated.
- ◆ The minimum standard dimension for 'PROJ' is 230mm. However, it can be varied to suit application. Requirements should be stated when unit is ordered.
- ◆ Dimension 'E' is the average swing radius; this can vary on non-standard burners.
- ◆ Please check the issue number to ensure validity.

ELECTRONIC MODULATION – LHH WITH UNIBLOC GAS VALVE

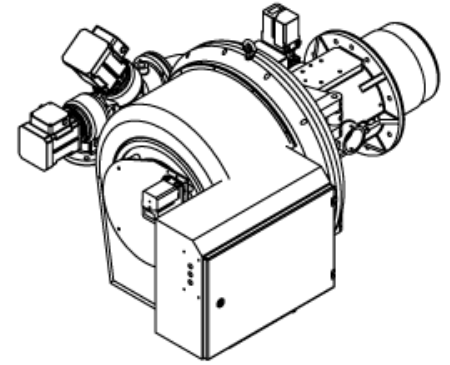
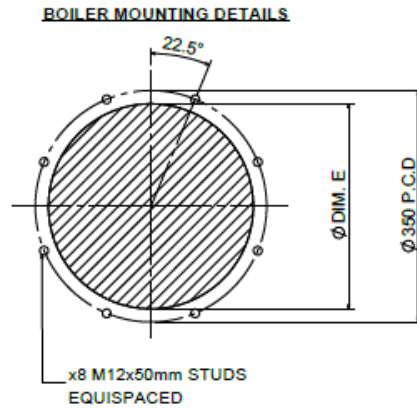
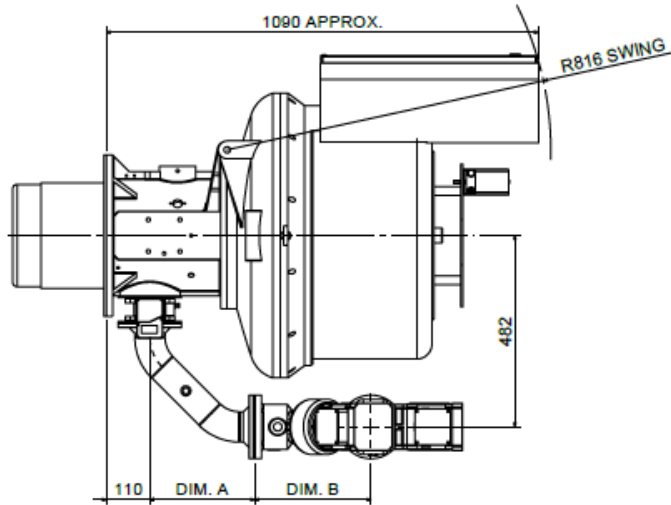


UNIBLOC SIZE	DIM. A	DIM. B	DIM. C
50 NB	353	279	105
65 NB	264	292	120
80 NB	357	289	136.5

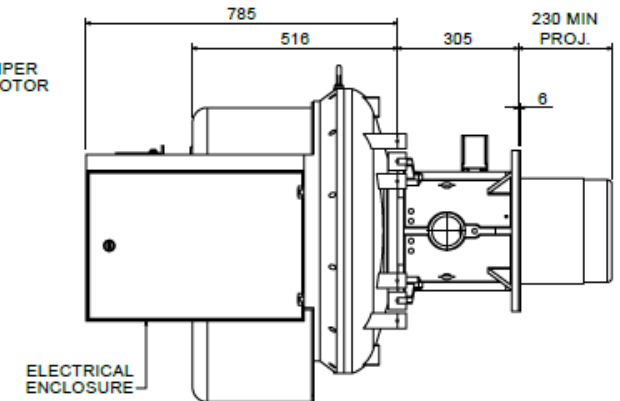
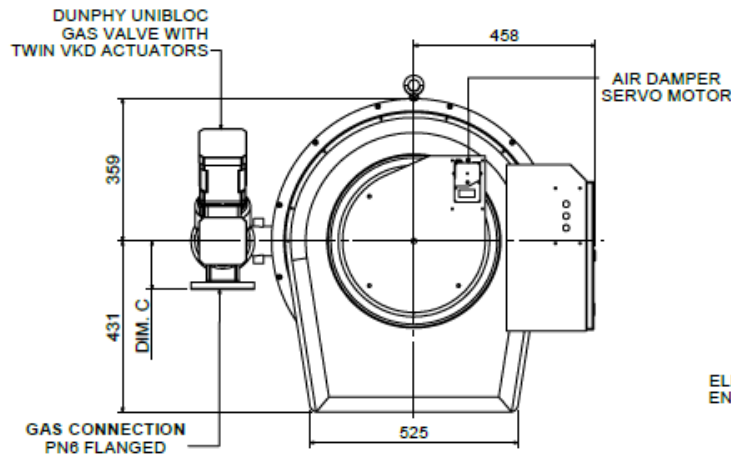
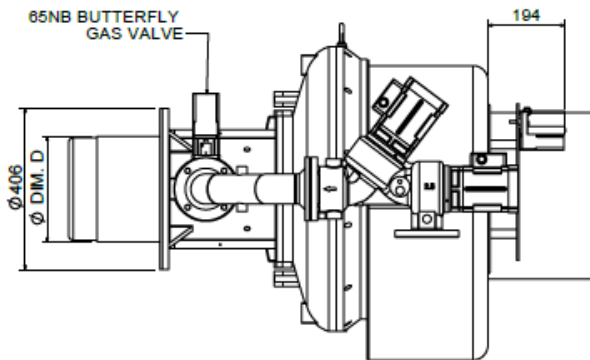
BURNER TYPE	DIM. D	DIM. E
TG 3.200 Z	Ø266	Ø275
TG 3.220 Z	Ø266	Ø275
TG 3.290 Y	Ø292	Ø310



ELECTRONIC MODULATION – RHH WITH UNIBLOC GAS VALVE

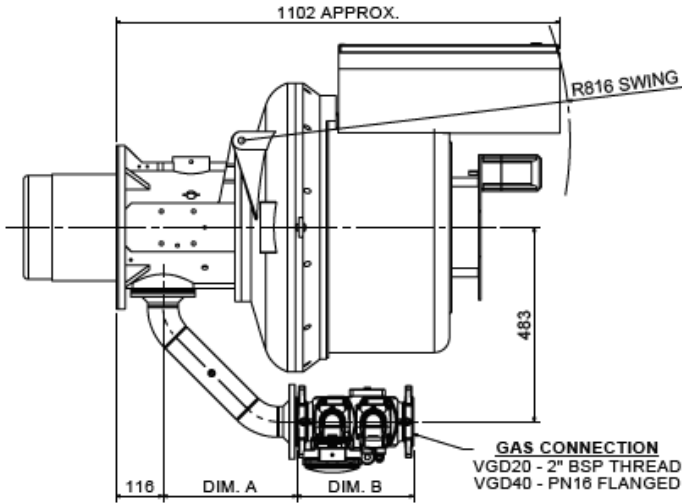


UNIBLOC SIZE	DIM. A	DIM. B	DIM. C	BURNER TYPE	DIM. D	DIM. E
50 NB	353	279	105	TG 3.200 Z	Ø266	Ø275
65 NB	264	292	120	TG 3.220 Z	Ø266	Ø275
80 NB	357	289	138.5	TG 3.290 Y	Ø292	Ø310

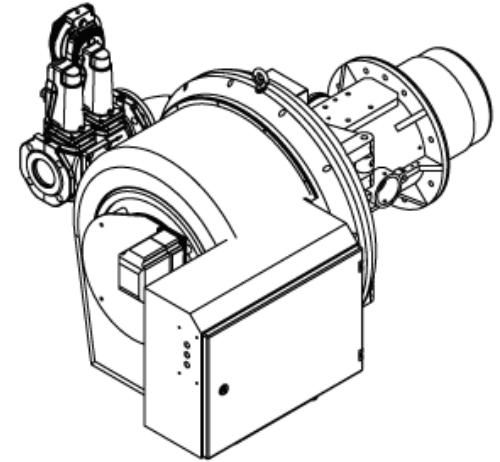
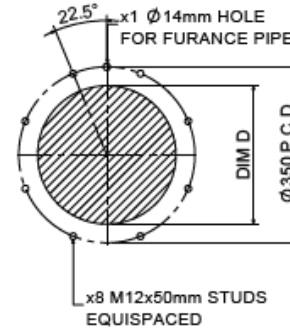


HIGH / LOW / PNEUMATIC MODULATION – RHH WITH VGD GAS VALVE

TG3 RHH HIGH/LOW BURNER

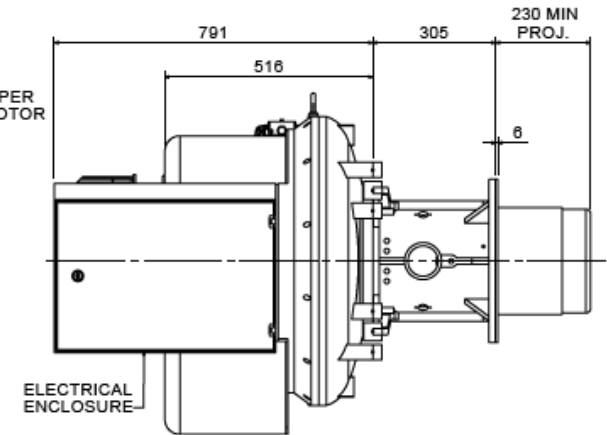
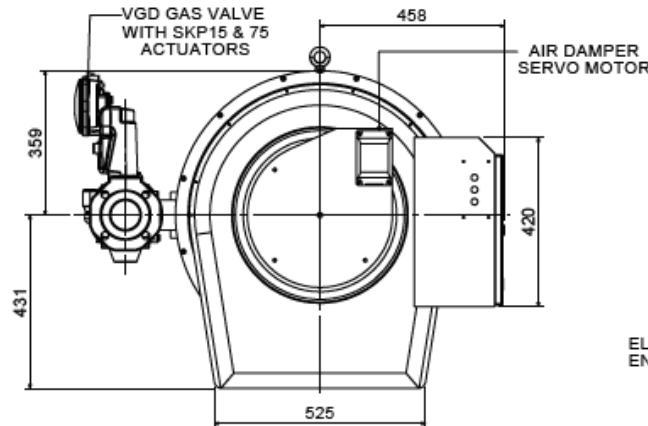
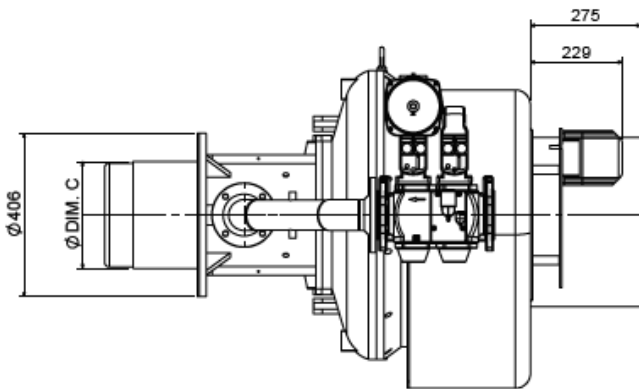


BOILER MOUNTING DETAILS



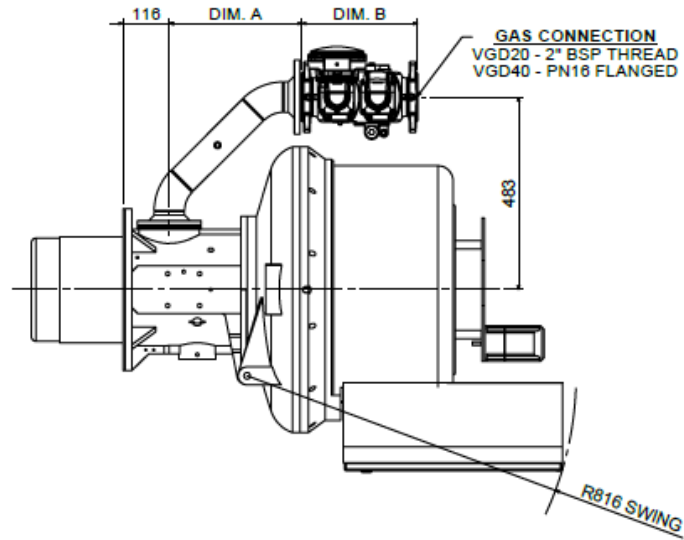
VGD SIZE	DIM. A	DIM. B
VGD20.503	421	309
VGD40.65	332	290
VGD40.80	427	311

BURNER TYPE	DIM. C	DIM. D
TG3.200 Z	Ø286	Ø275
TG3.220 Z	Ø286	Ø275
TG3.290 Y	Ø310	Ø310

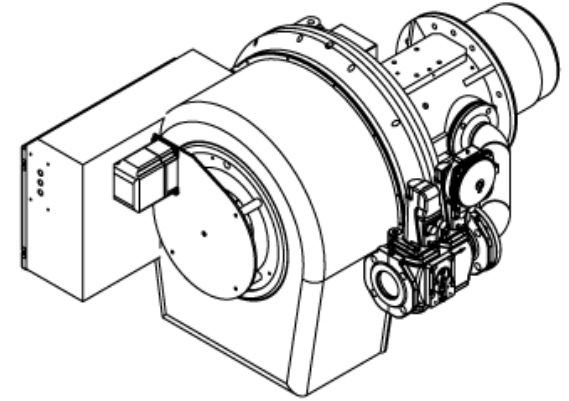
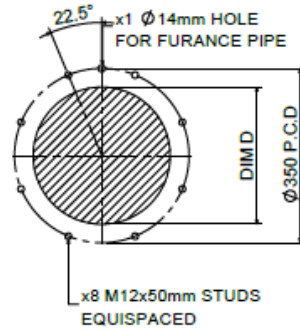


HIGH / LOW / PNEUMATIC MODULATION – LHH WITH VGD GAS VALVE

TG3 LHH HIGH/LOW BURNER

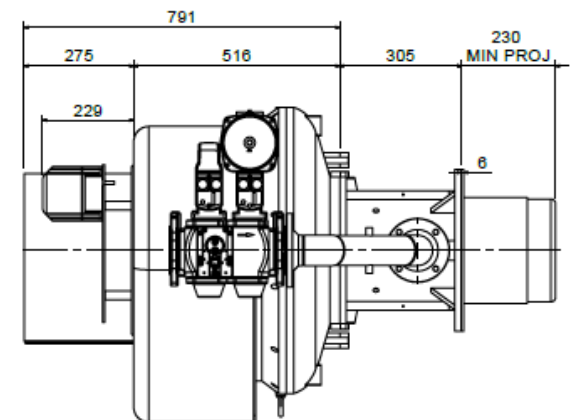
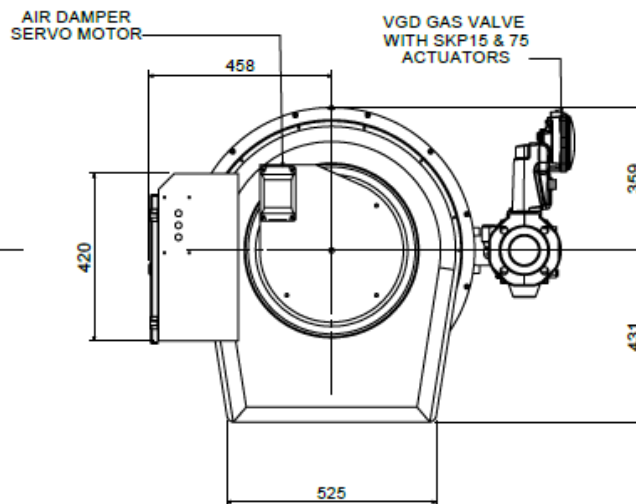
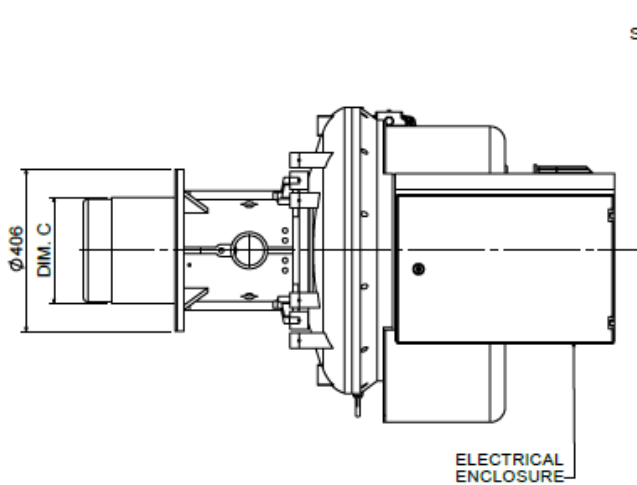


BOILER MOUNTING DETAILS

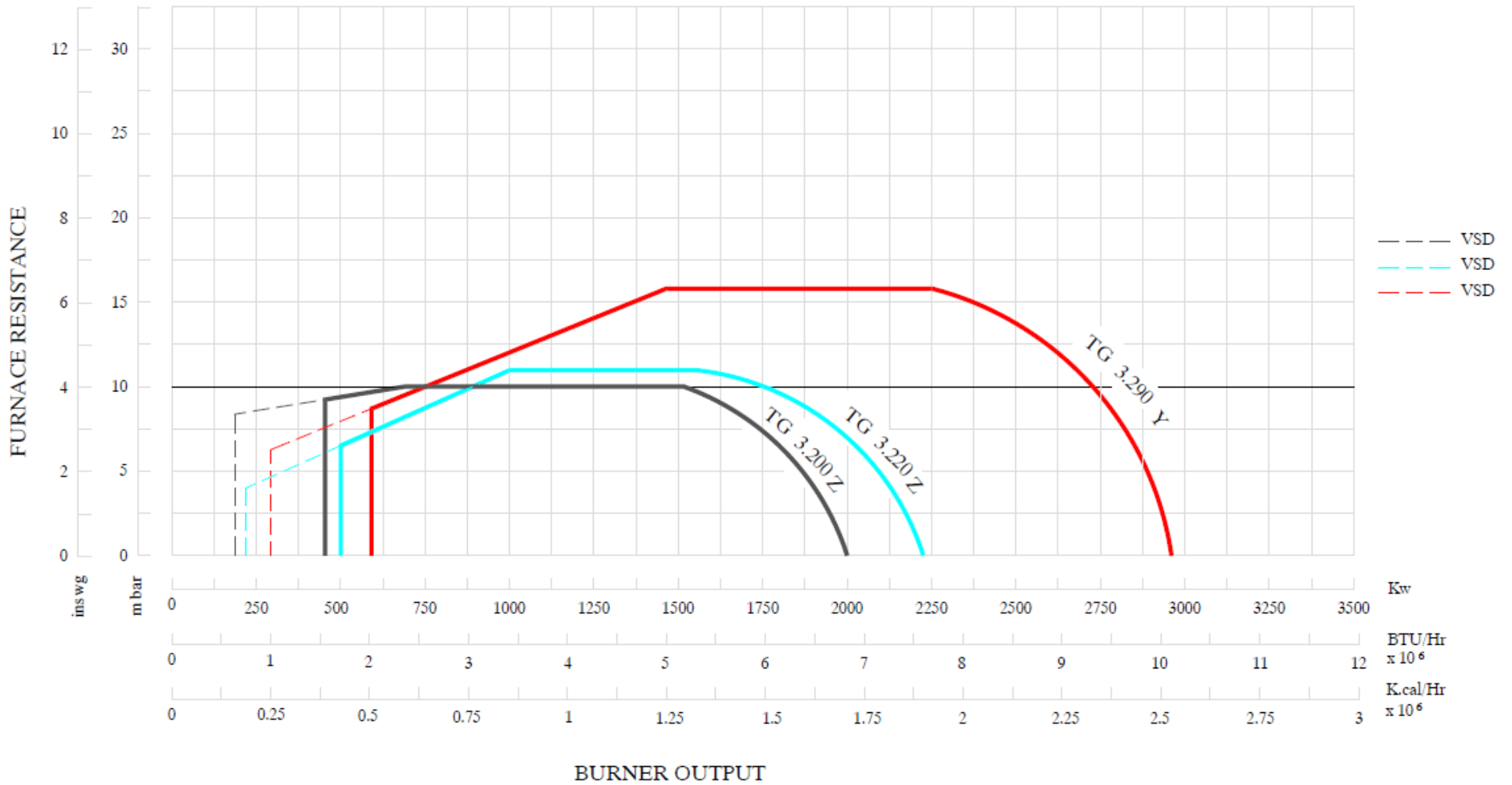


VGD SIZE	DIM. A	DIM. B
VGD20.503	421	309
VGD40.85	332	290
VGD40.80	427	311

BURNER TYPE	DIM. C	DIM. D
TG3.200 Z	Ø268	Ø275
TG3.220 Z	Ø268	Ø275
TG3.290 Y	Ø310	Ø310

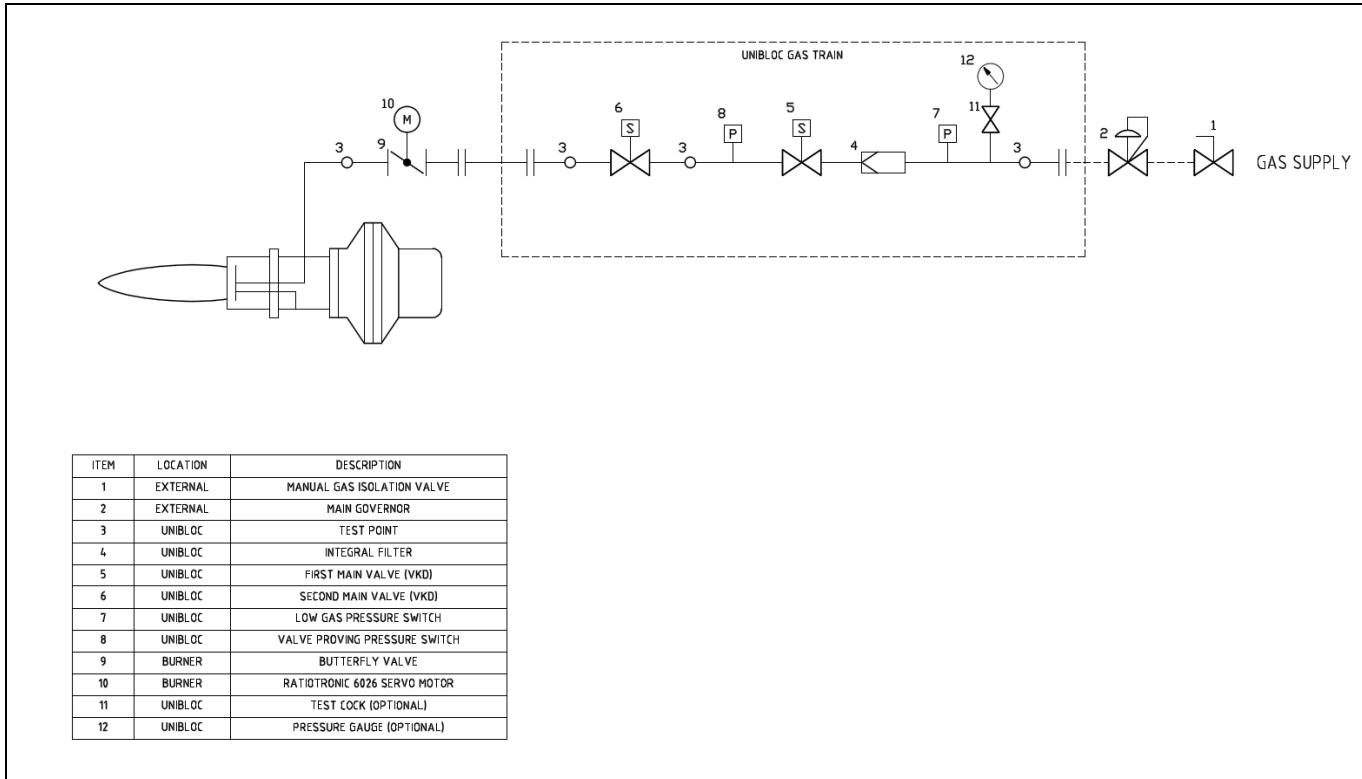


BURNER RATING GRAPH

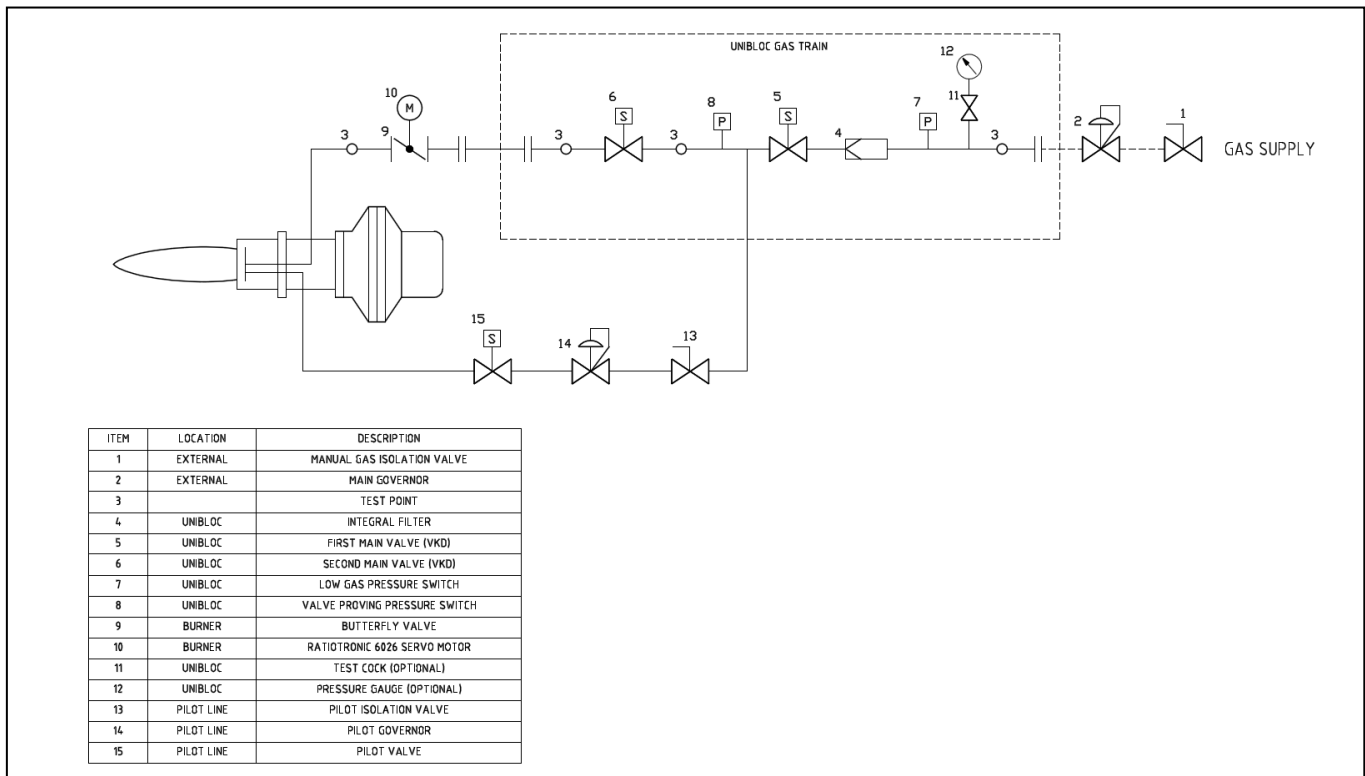


BURNER SCHEMATICS - ELECTRICAL MODULATING

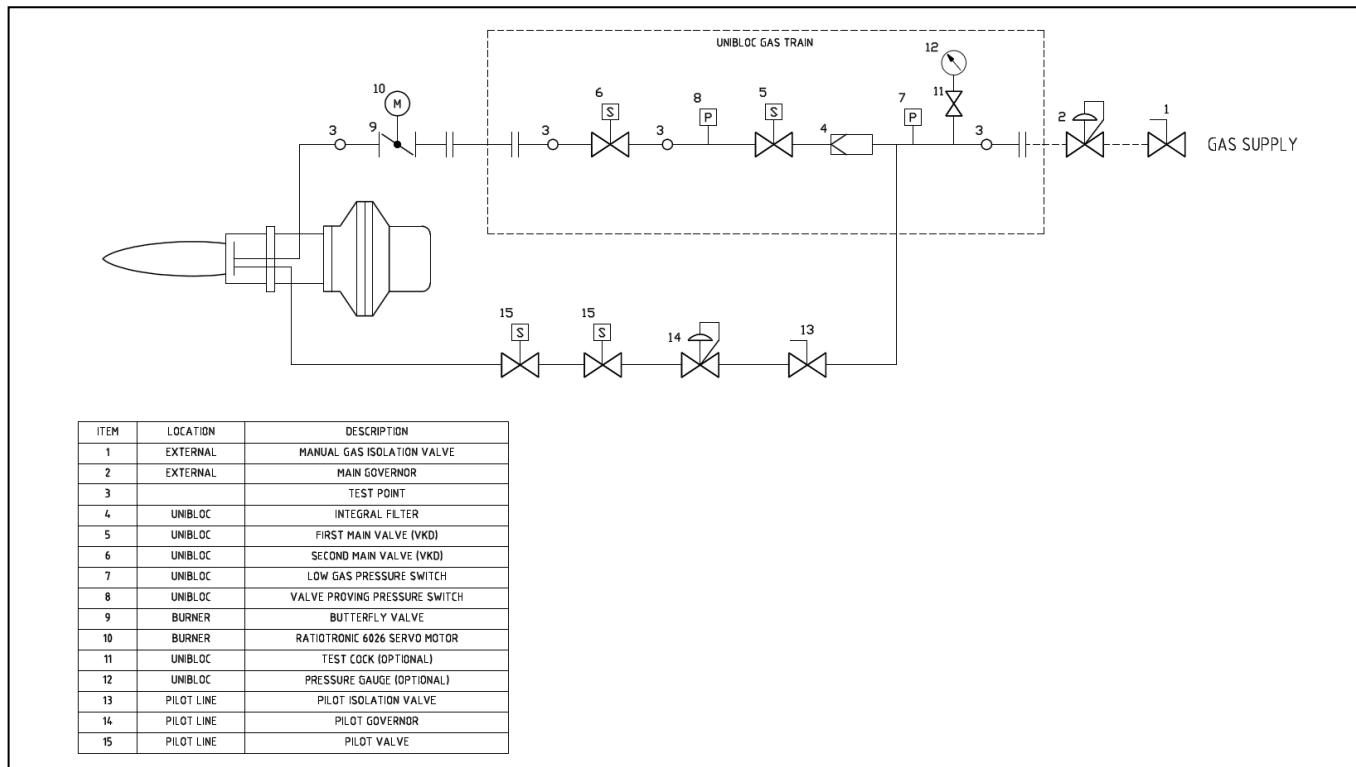
Typical Gas Line Schematic for Electronic Modulating Burners without Gas Pilot Line



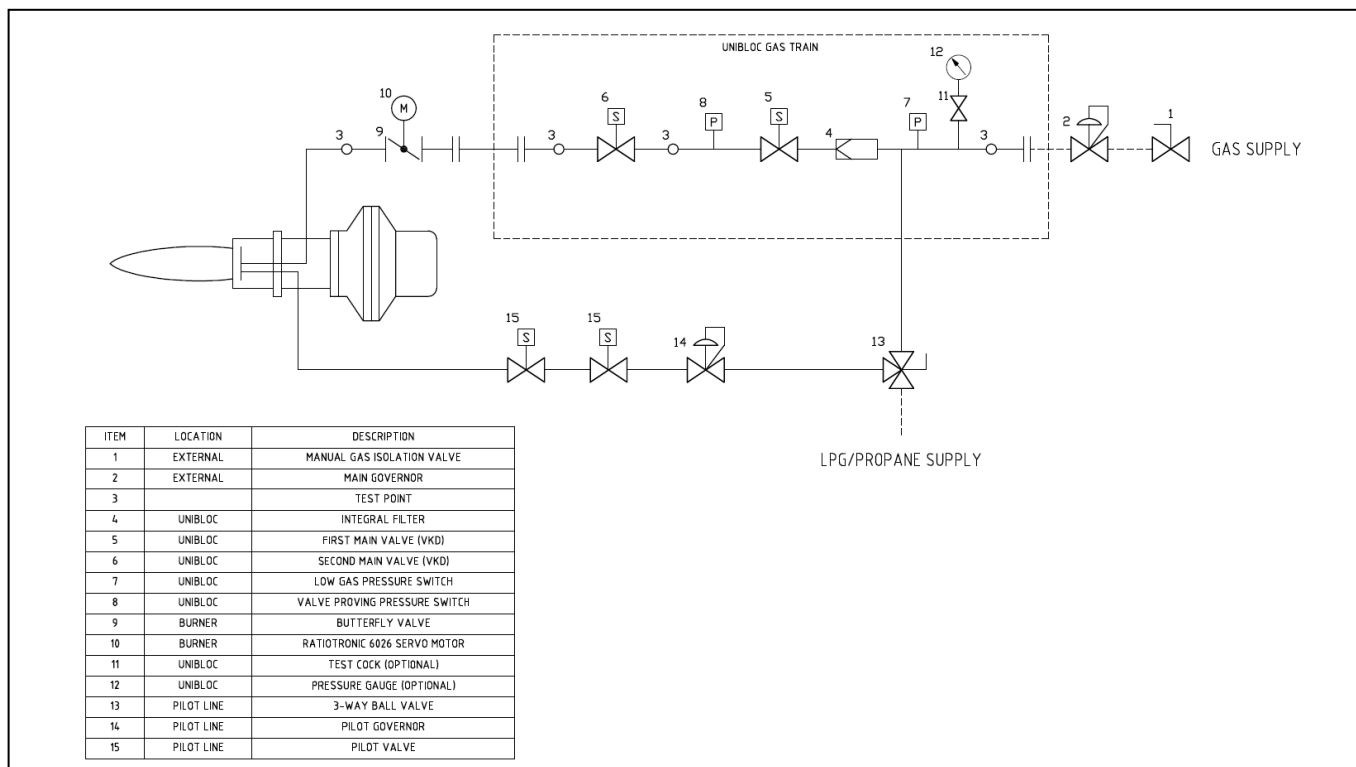
Typical Gas Line Schematic for Electronic Modulating Burners with Gas Pilot Line (Single Valve)



Typical Gas Line Schematic for Electronic Modulating Burners with Gas Pilot Line (Twin Valve)



Typical Gas Line Schematic for Electronic Modulating Burners with Gas Pilot Line (Twin Valve) and Optional LPG / Propane Connection



STANDARD SPECIFICATION DATA

BURNER TYPE	Firing Rate kW		GAS VOLUME (m3/HR) *1		FIRING MODE OPTIONS				Motor kW	Voltage	Hz	Ph	Running Current (Amp)	Starting Current (Amp) *4
	MIN *3	MAX	MIN *3	MAX	High / Low	Electro / Pneumatic Modulation	Electronic Modulation*2	Electronic Modulation with VSD						
TG3.200Z	200	2000	18.4	184	✓	✓	✓	✓	3.0	380-420	50	3	9	53
TG3.220Z	220	2200	20.3	203	✓	✓	✓	✓	4.0	380-420	50	3	11	79
TG3.290Y	295	2950	27.2	272	✓	✓	✓	✓	5.5	380-420	50	3	16	36

*1 – Based on Nat. Gas C.V 10.84 kWh/m3

*2 - Fitted with a Ratiotronic 6000 system

*3 – Based on 10:1 turn down fitted with VSD

*4 - When fitted with VSD the starting current is 0 Amps

COMBUSTION HEAD

The Dunphy dual fuel combustion head incorporates a two-stage fuel/air mixing system which eliminates low frequency resonance and allows maximum combustion efficiency with minimum emission levels.

This system combined with smooth ignition and extreme reliability make Dunphy combustion equipment the most sensible choice for all heating and process applications.

ULTRA LOW NO_x BURNERS

All Dunphy T-Series burners are fitted with low NO_x combustion heads as standard equipment.

As an optional extra all burners in this range can be fitted with an internal flue gas recirculation system to achieve ultra low NO_x emissions.

Dunphy Combustion Ltd have a policy of continuous development and reserve the right to change prices and specifications without prior notice.

Dunphy Combustion Ltd. has a policy of continuous development and reserve the right to change prices and specifications without prior notice