



+44 (0)1706 649217



+44 (0)1706 655512



www.dunphy.co.uk

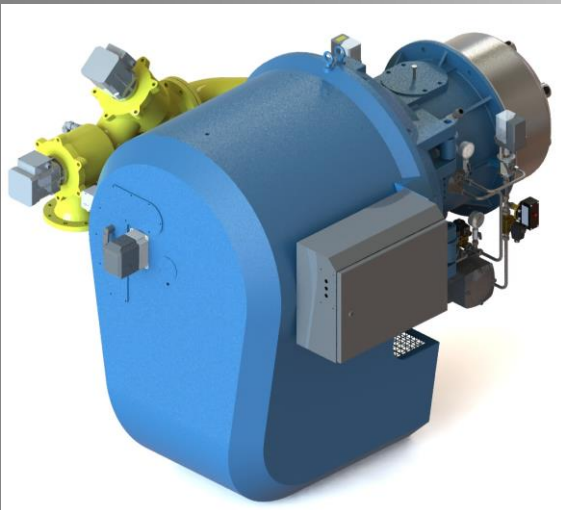
DATA SHEET

Model: TD6

Revision Date: November 2020

Output: 1200 – 14000 kW

Revision Number: DS.TD6.14



- ◆ All models approved to current British and European Standards.
- ◆ All burners in the T.D. range are of the fan assisted, nozzle mix type and operation is fully automatic.
- ◆ CE approval numbers for the TD6 Series burners are:
 - ◆ TD6.1200/1400 CE 679311



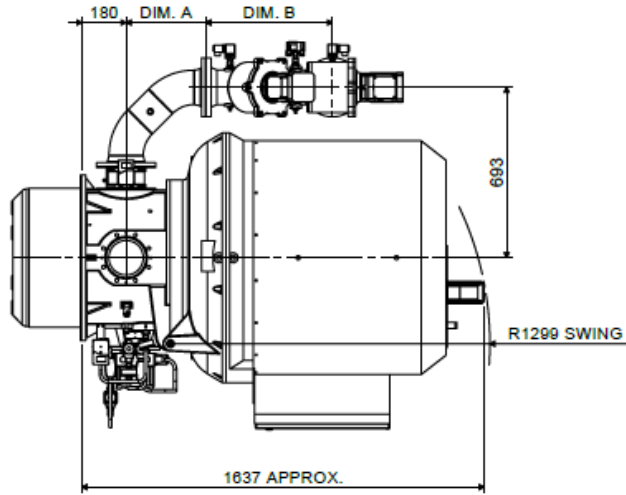
FM 24868

BURNER DIMENSIONS

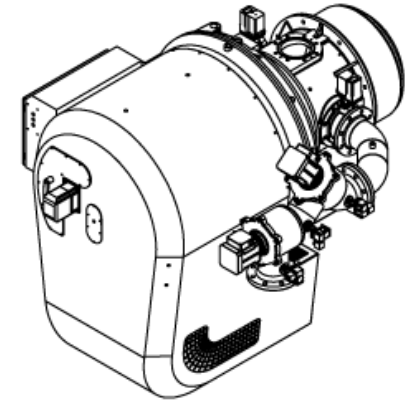
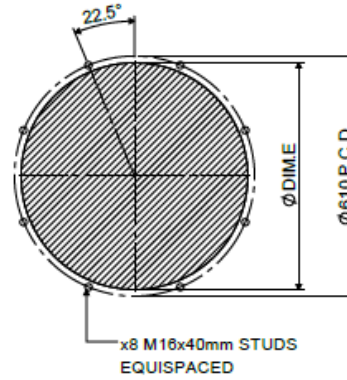
- ◆ Drawings shown on the following pages
- ◆ All dimensions in mm unless otherwise stated.
- ◆ The minimum standard dimension for 'PROJ' is 280mm. However, it can be varied to suit application. Requirements should be stated when unit is ordered.
- ◆ Burners supplied as Left hand hinge or Right hand hinge
- ◆ The swing radius shown is the average; this can vary on non-standard burners.
- ◆ Please check the issue number to ensure validity.

TD6 LHH ELECTRONIC MODULATION WITH UNIBLOC GAS VALVE

TD6 LHH ELECTRONIC MODULATION BURNER WITH UNIBLOC GAS VALVE



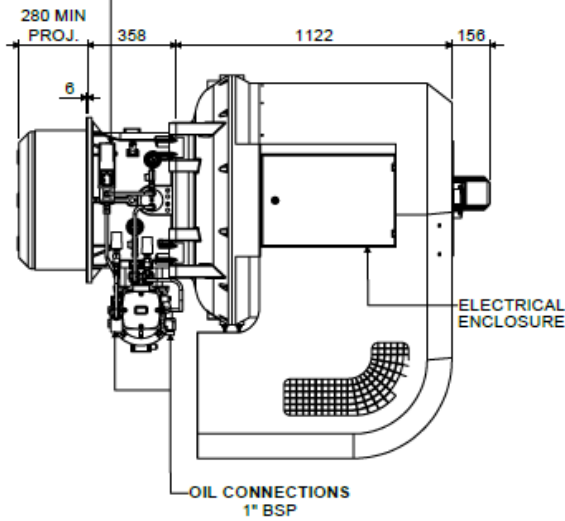
BOILER MOUNTING DETAILS



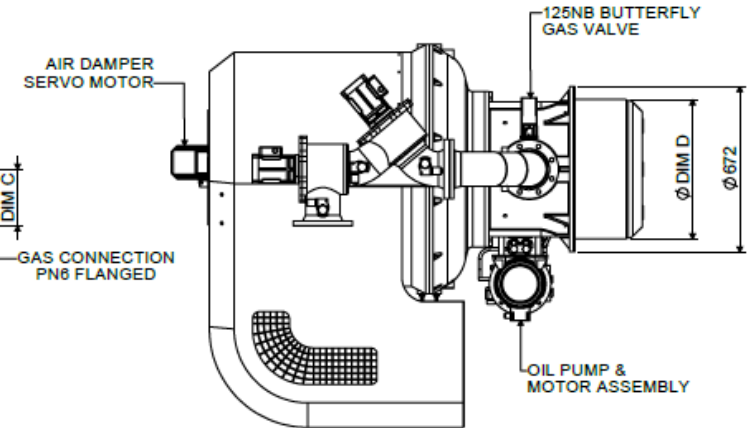
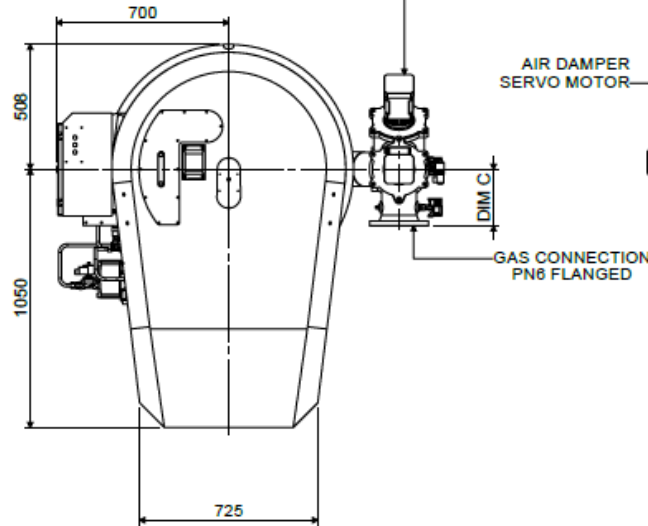
UNIBLOC SIZE	DIM.A	DIM.B	DIM.C
100 NB	448	383	192
125 NB	324	514	232

BURNER TYPE	DIM.D	DIM.E
TD 6.1200 Z	ϕ 516	ϕ 525
TD 6.1400 Y	ϕ 566	ϕ 576

VT2 OIL METERING VALVE ASSEMBLY

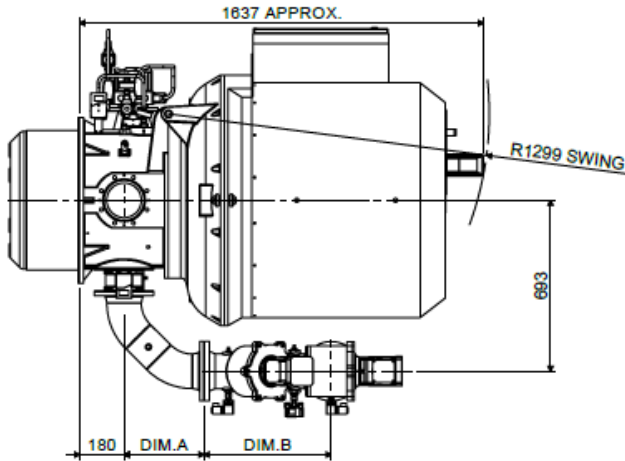


DUNPHY UNIBLOC GAS VALVE WITH TWIN VKD ACTUATORS

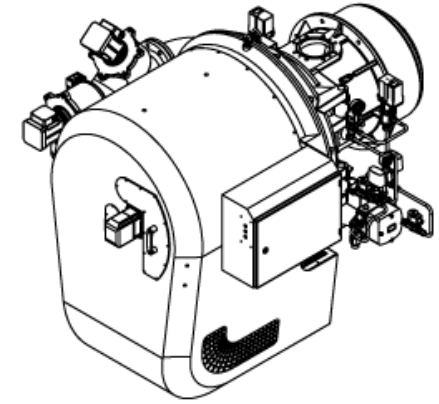
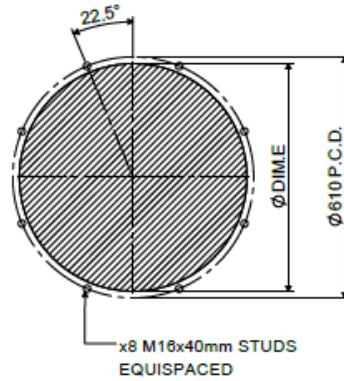


TD6 RHH ELECTRONIC MODULATION WITH UNIBLOC GAS VALVE

TD6 RHH ELECTRONIC MODULATION BURNER WITH UNIBLOC GAS VALVE

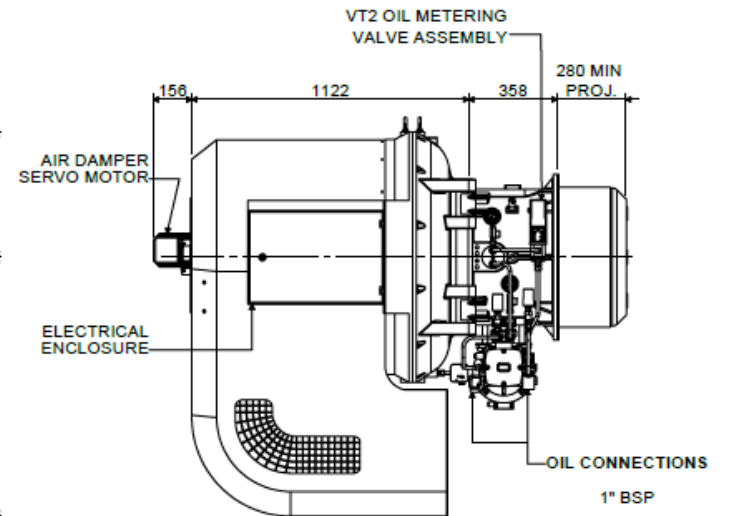
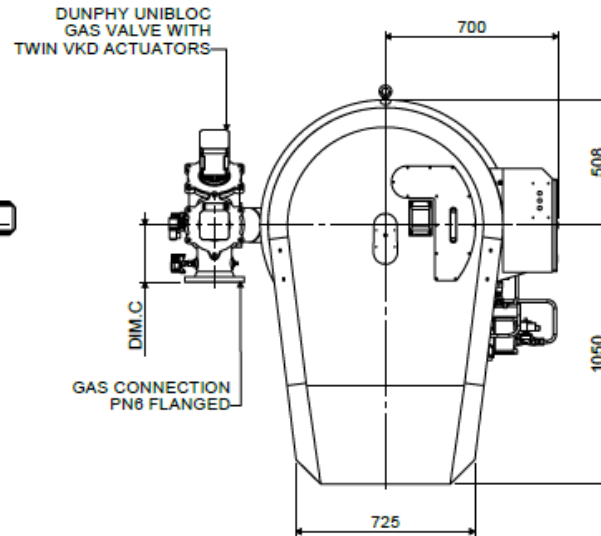
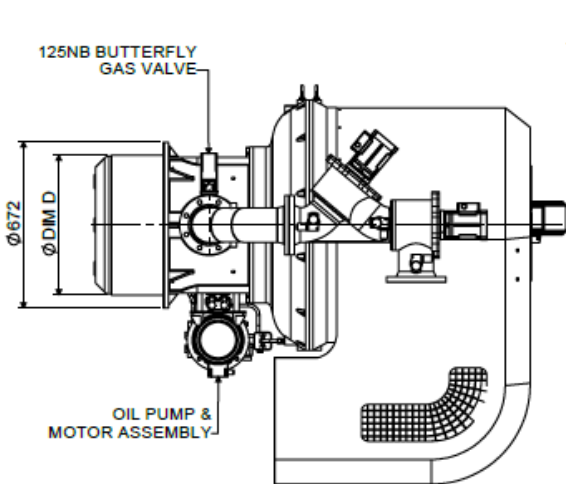


BOILER MOUNTING DETAILS



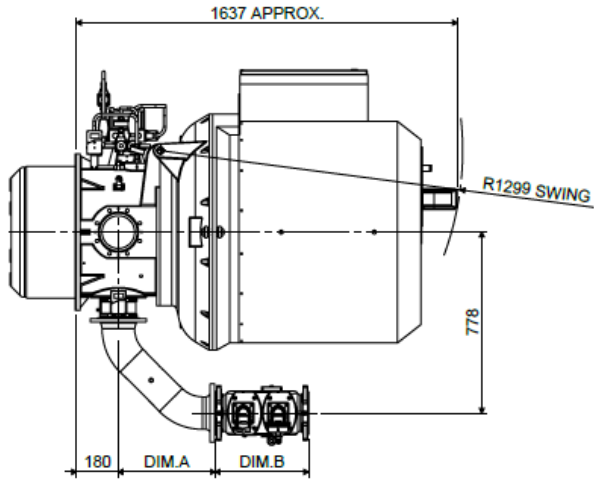
UNIBLOC SIZE	DIM.A	DIM.B	DIM.C
100 NB	448	383	192
125 NB	324	514	232

BURNER TYPE	DIM.D	DIM.E
TD 6.1200 Z	Ø 516	Ø 525
TD 6.1400 Y	Ø 566	Ø 576

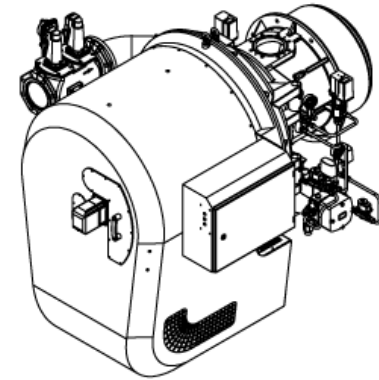
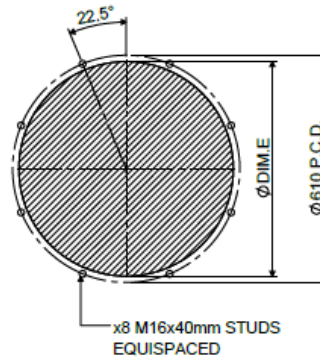


TD6 LHH ELECTRONIC MODULATION WITH VGD GAS VALVE

TD6 RHH ELECTRONIC MODULATION BURNER WITH VGD GAS VALVE

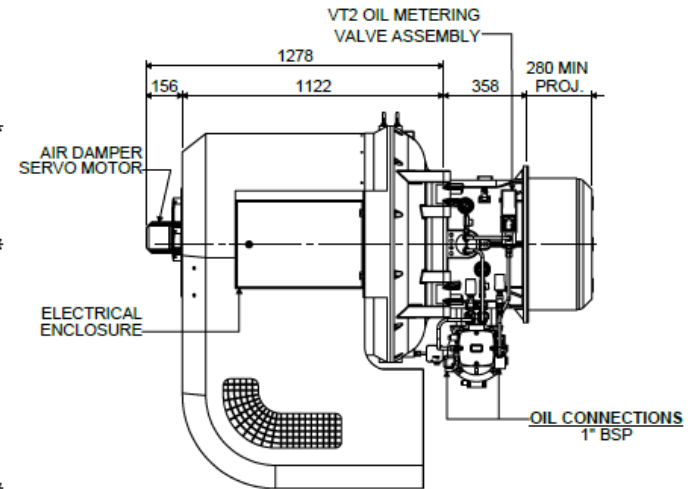
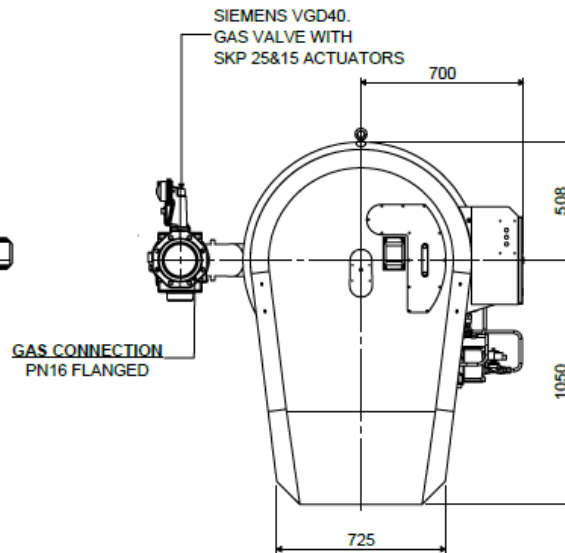
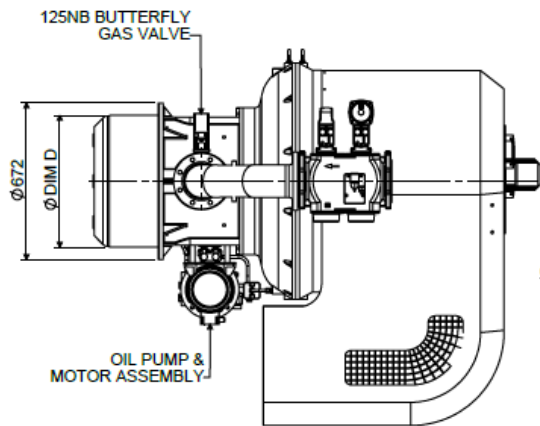


BOILER MOUNTING DETAILS



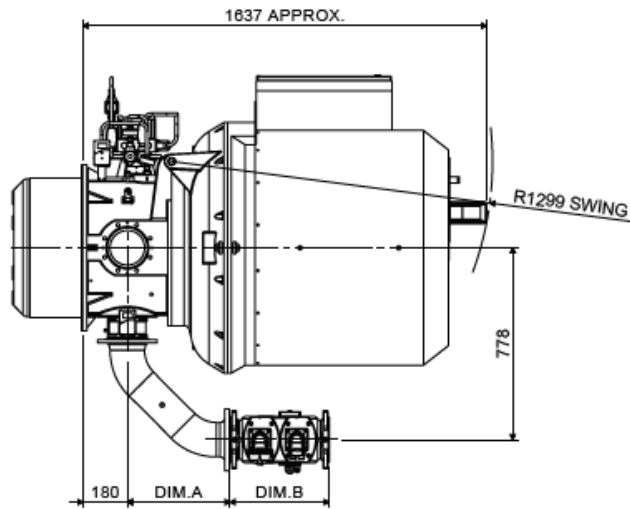
VDG SIZE	DIM.A	DIM.B
100 NB	448	383
125 NB	416	402

BURNER TYPE	DIM.D	DIM.E
TD 6.1200 Z	Ø516	Ø525
TD 6.1400 Y	Ø566	Ø576

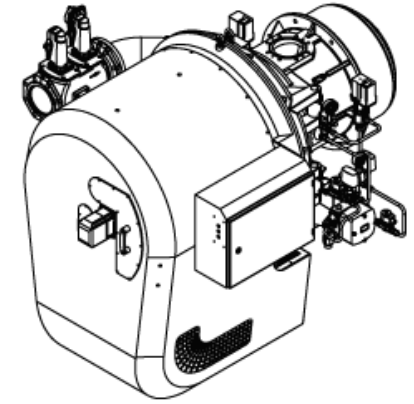
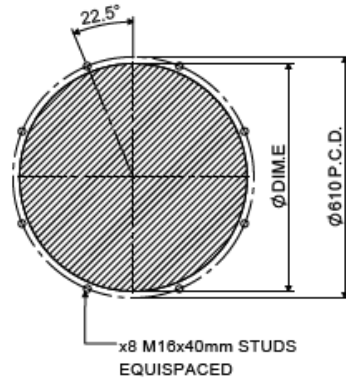


TD6 RHH ELECTRONIC MODULATION WITH VGD GAS VALVE

TD6 RHH ELECTRONIC MODULATION BURNER WITH VGD GAS VALVE

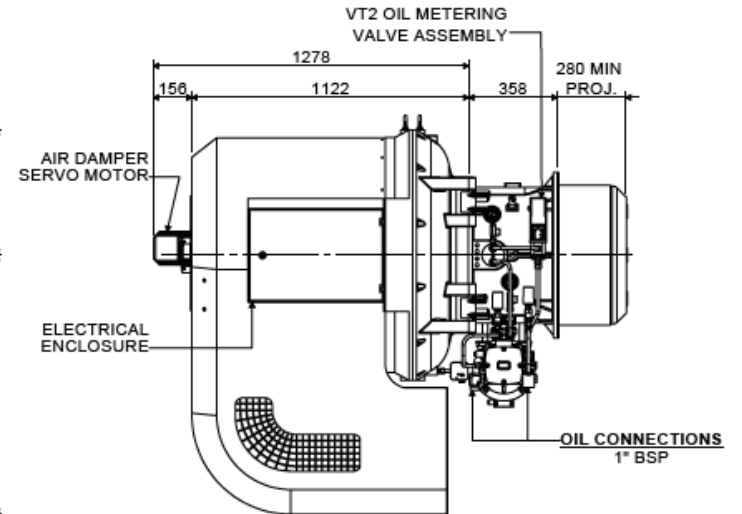
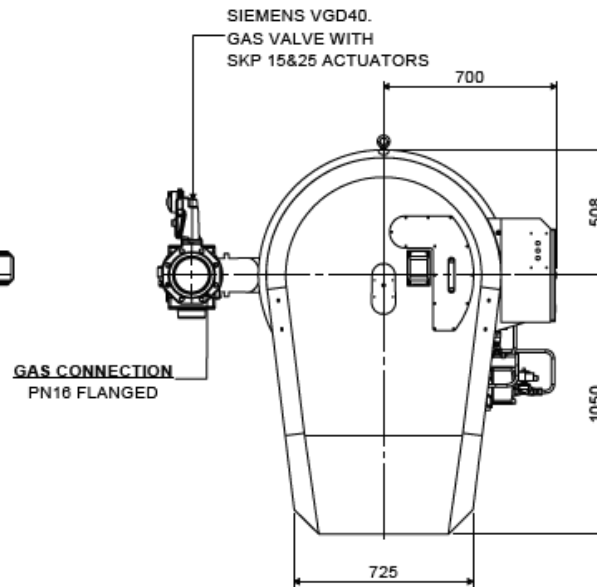
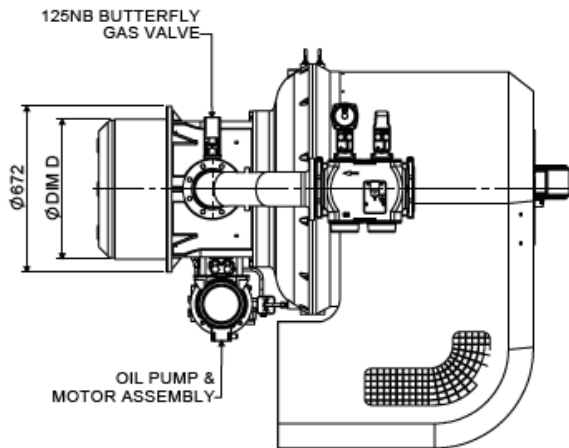


BOILER MOUNTING DETAILS



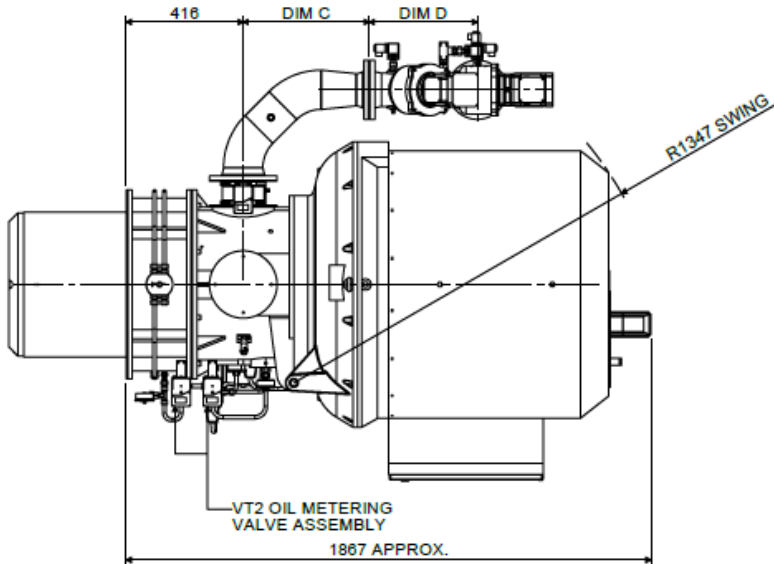
VDG SIZE	DIM.A	DIM.B
100 NB	448	383
125 NB	416	402

BURNER TYPE	DIM.D	DIM.E
TD 6.1200 Z	Ø516	Ø525
TD 6.1400 Y	Ø566	Ø576

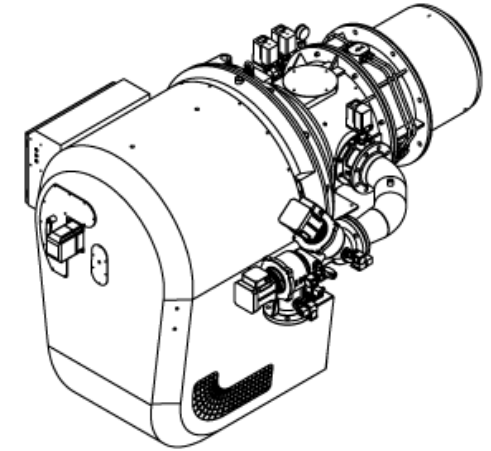
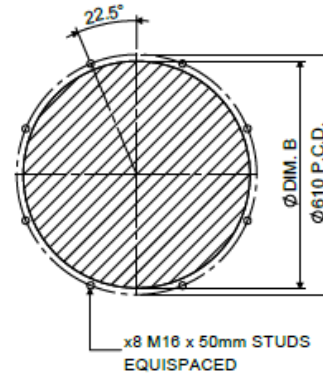


TD6 LHH ELECTRONIC MODULATION WITH UNIBLOC GAS VALVE MULTI OIL

TD6 MUTLI-OIL ELECTRONIC MODULATION BURNER - LHH

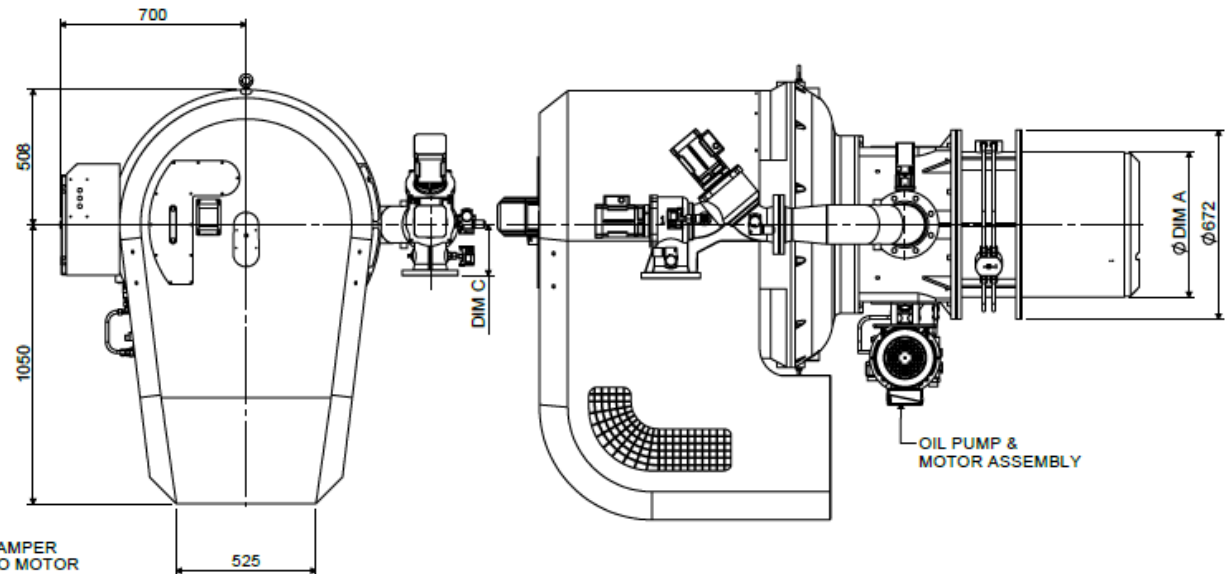
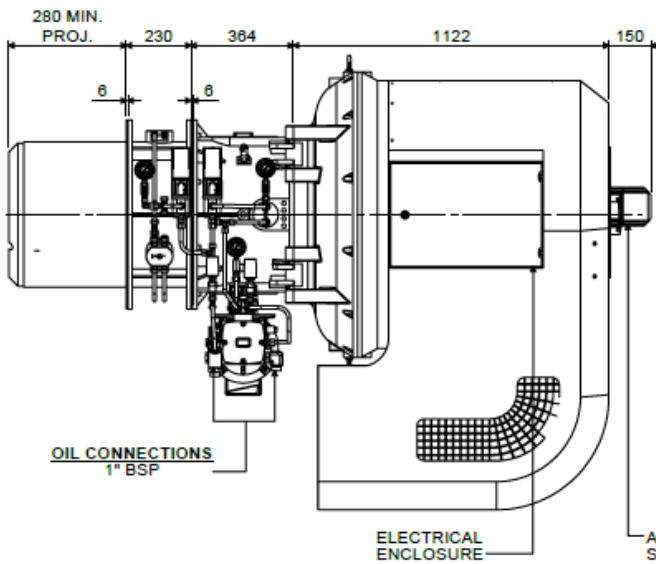


BOILER MOUNTING DETAILS



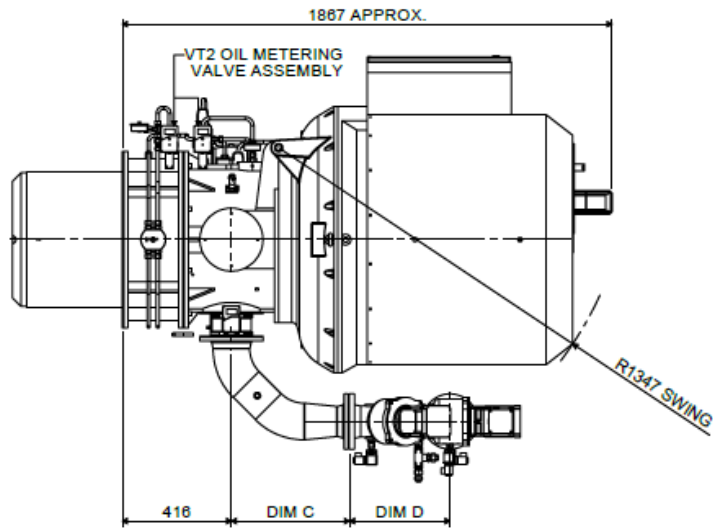
BURNER TYPE	DIM. A	DIM. B
TD6.1200	518	525
TD6.1400	568	575

UNIBLOC SIZE	DIM C	DIM D	DIM E
100 NB	450	383	192
125 NB	328	514	232

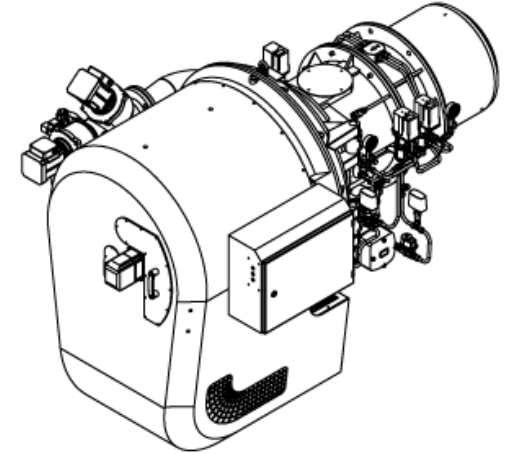
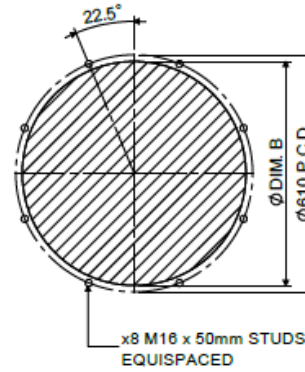


TD6 RHH ELECTRONIC MODULATION WITH UNIBLOC GAS VALVE MULTI OIL

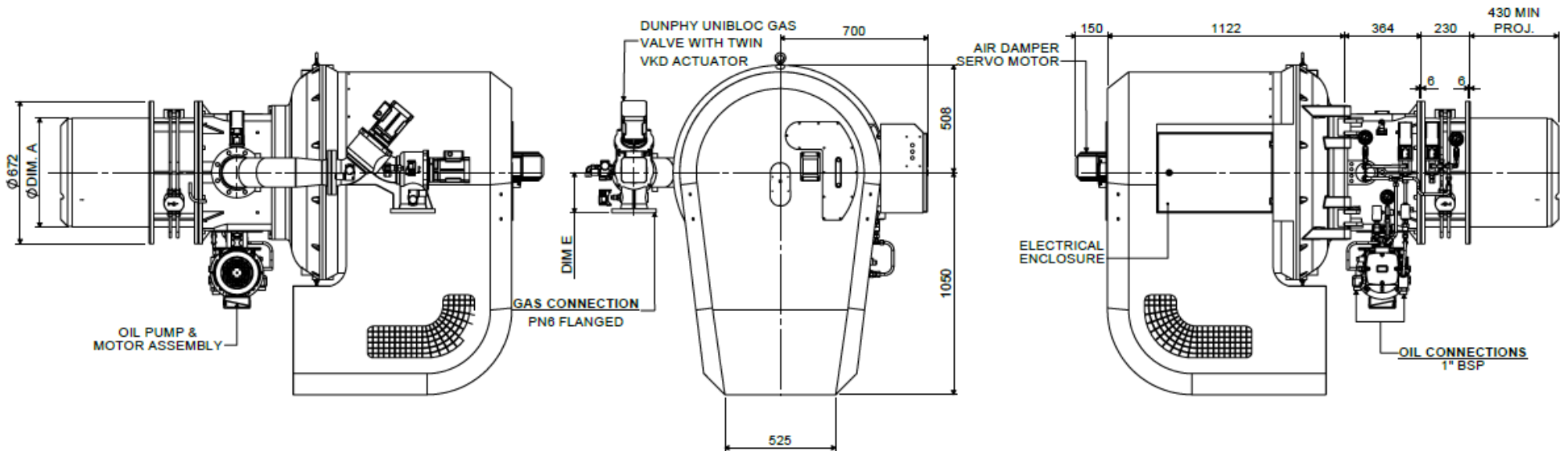
TD6 MUTLI-OIL ELECTRONIC MODULATION BURNER - RHH



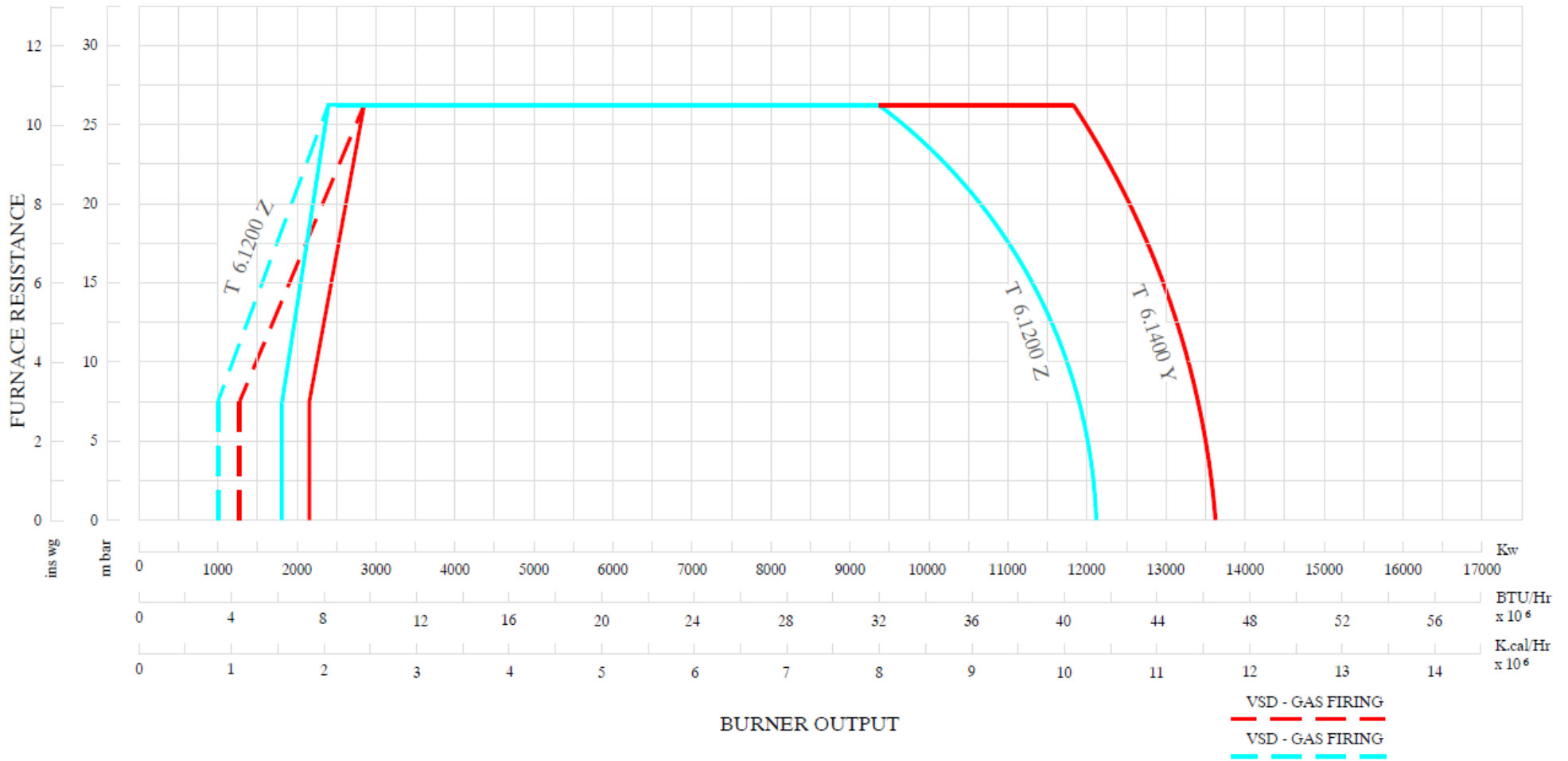
BOILER MOUNTING DETAILS



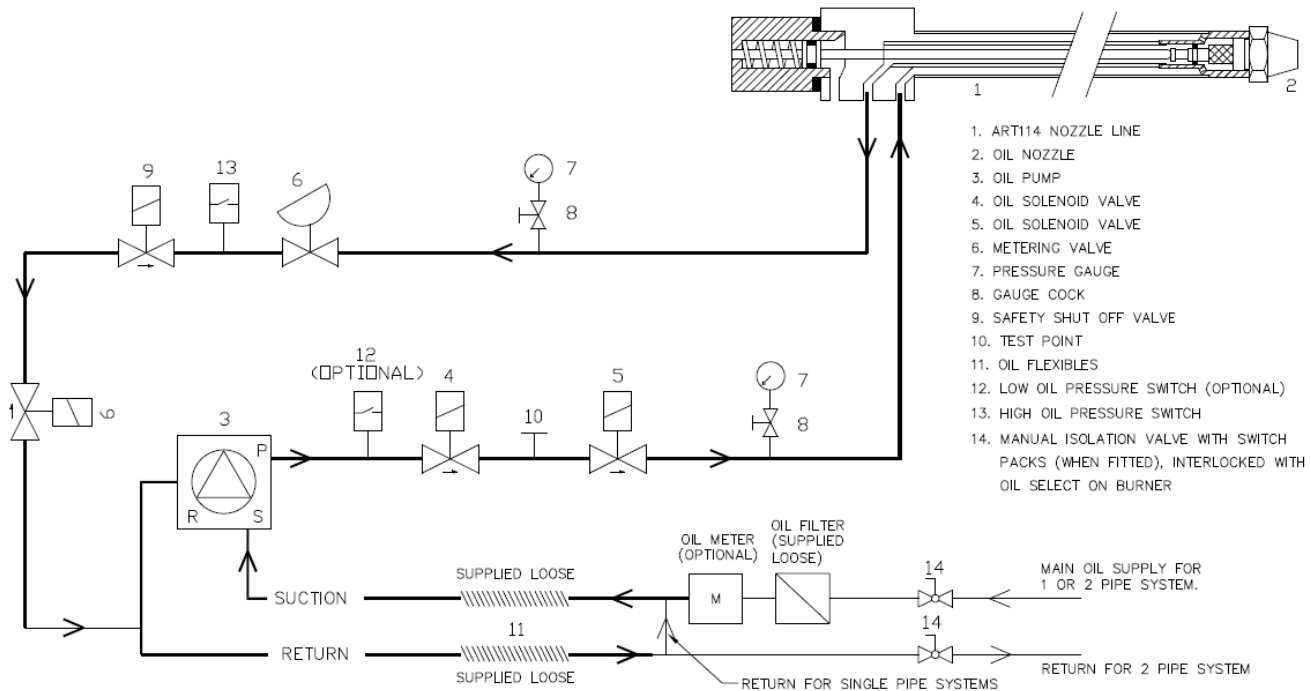
BURNER TYPE	DIM. A	DIM. B	UNIBLOC SIZE	DIM C	DIM D	DIM E
TD6.1200	516	525	100 NB	450	383	192
TD6.1400	566	575	125 NB	326	514	232



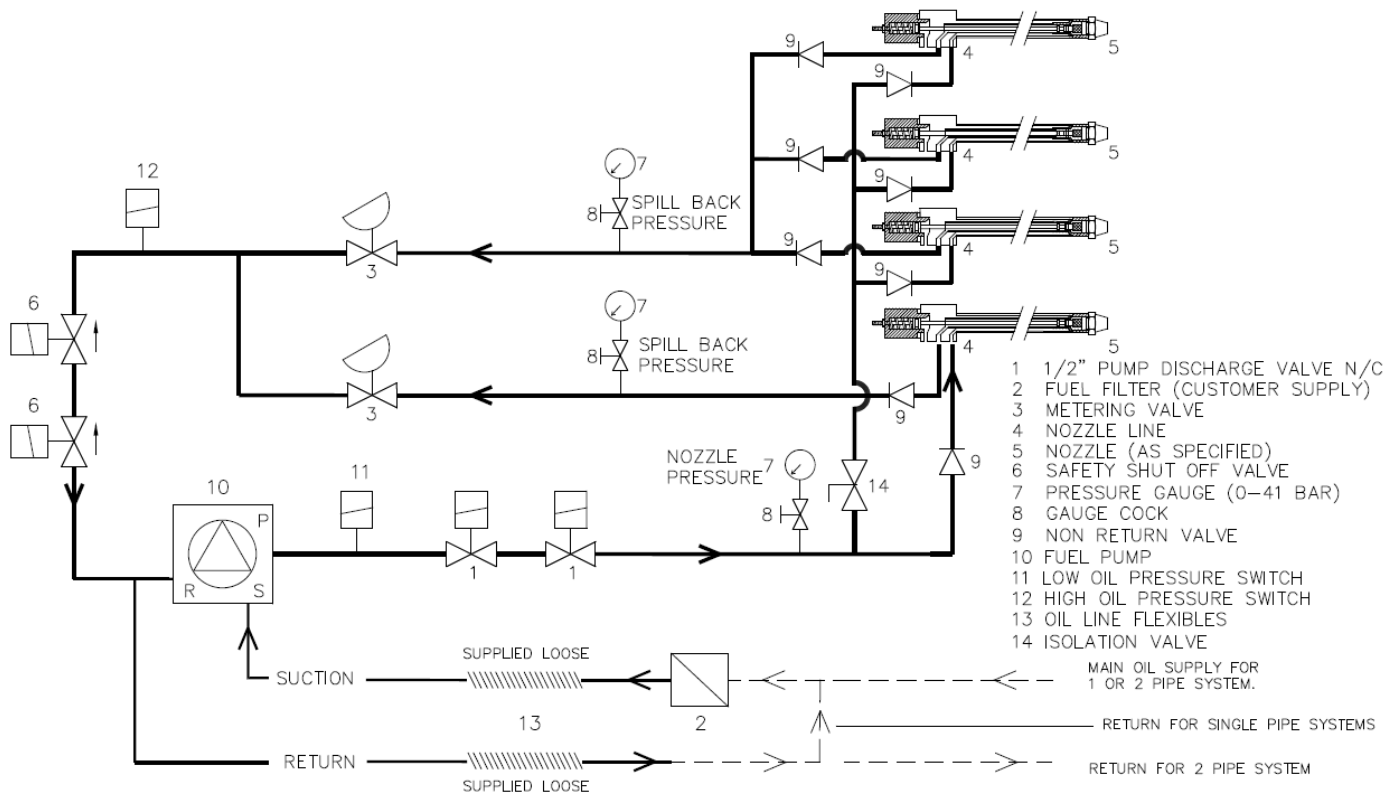
BURNER RATING GRAPH AND OIL SCHEMATIC



TYPICAL OIL LINE SCHEMATIC FOR LIGHT OIL DUAL FUEL BURNERS MODULATING WITH ART 1400 NOZZLE

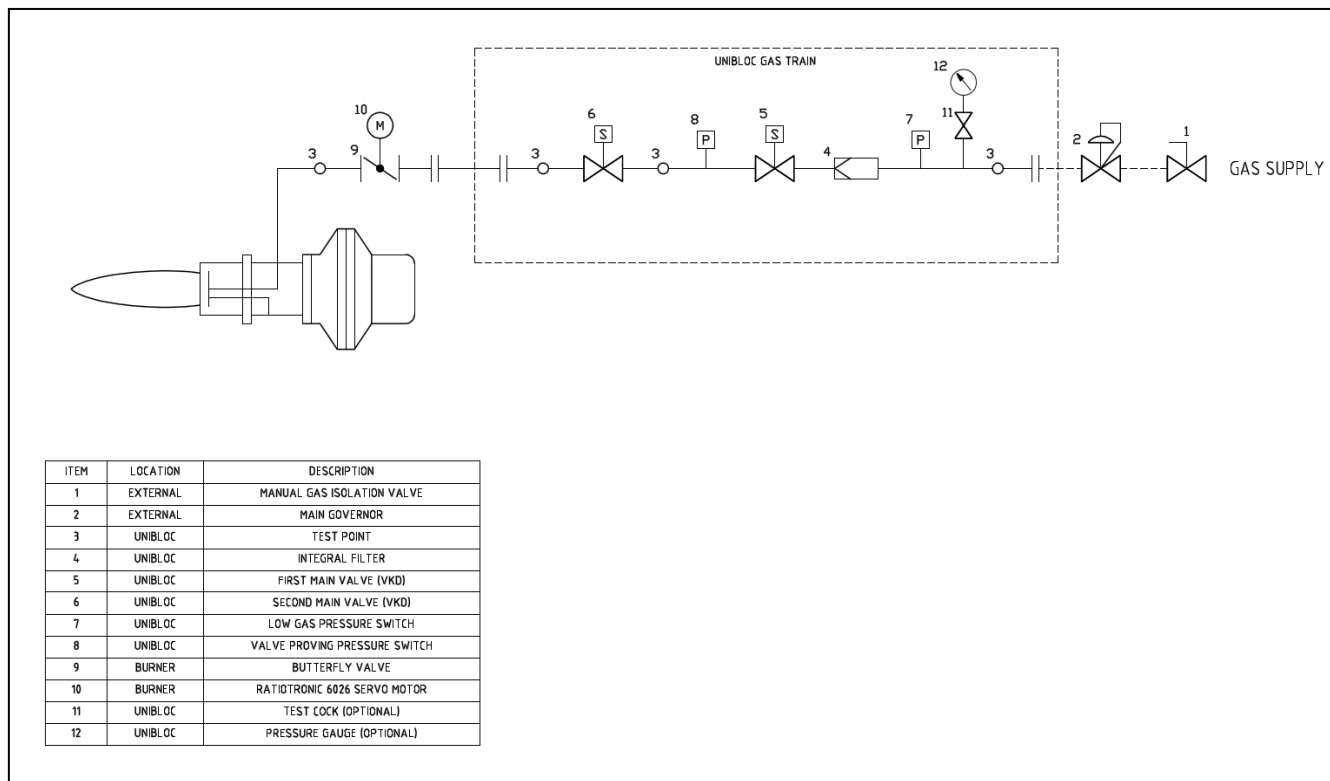


TYPICAL OIL LINE SCHEMATIC FOR MULTI NOZZLE SYSTEM BURNER (WITH SRV & LOPS & HOPS)

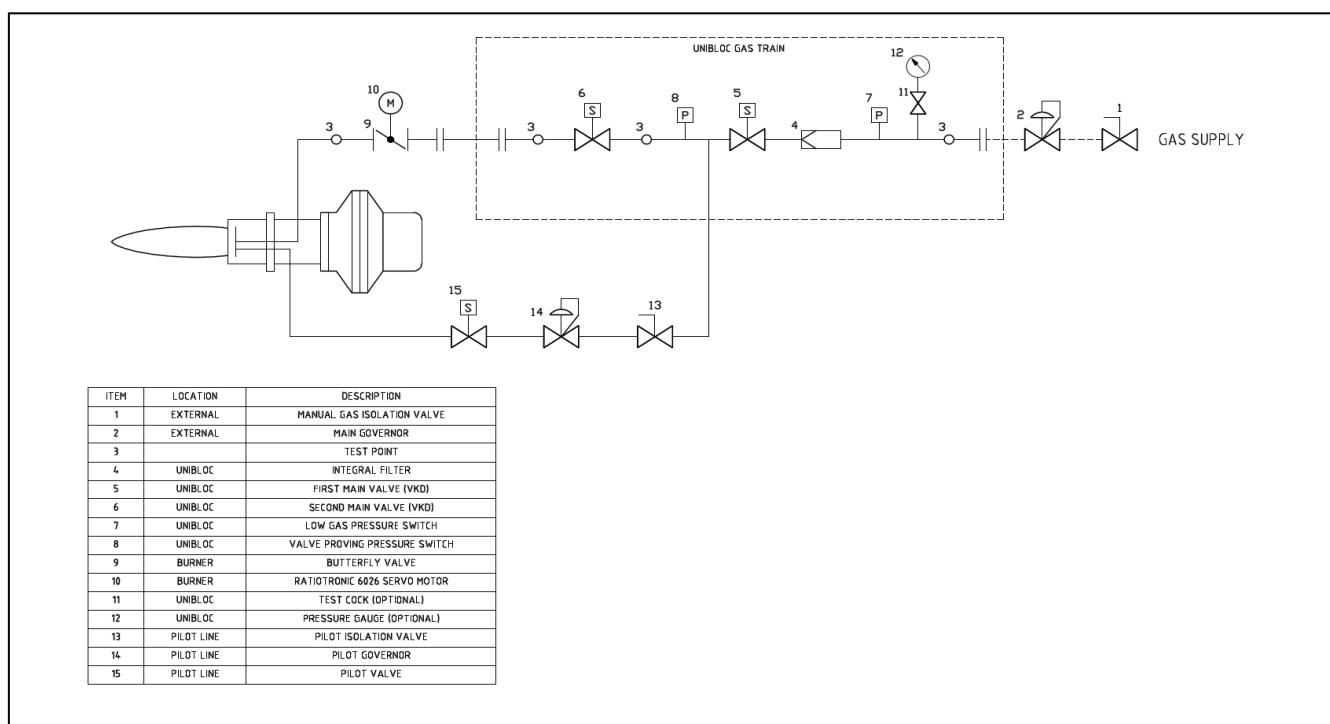


BURNER SCHEMATICS - ELECTRICAL MODULATING

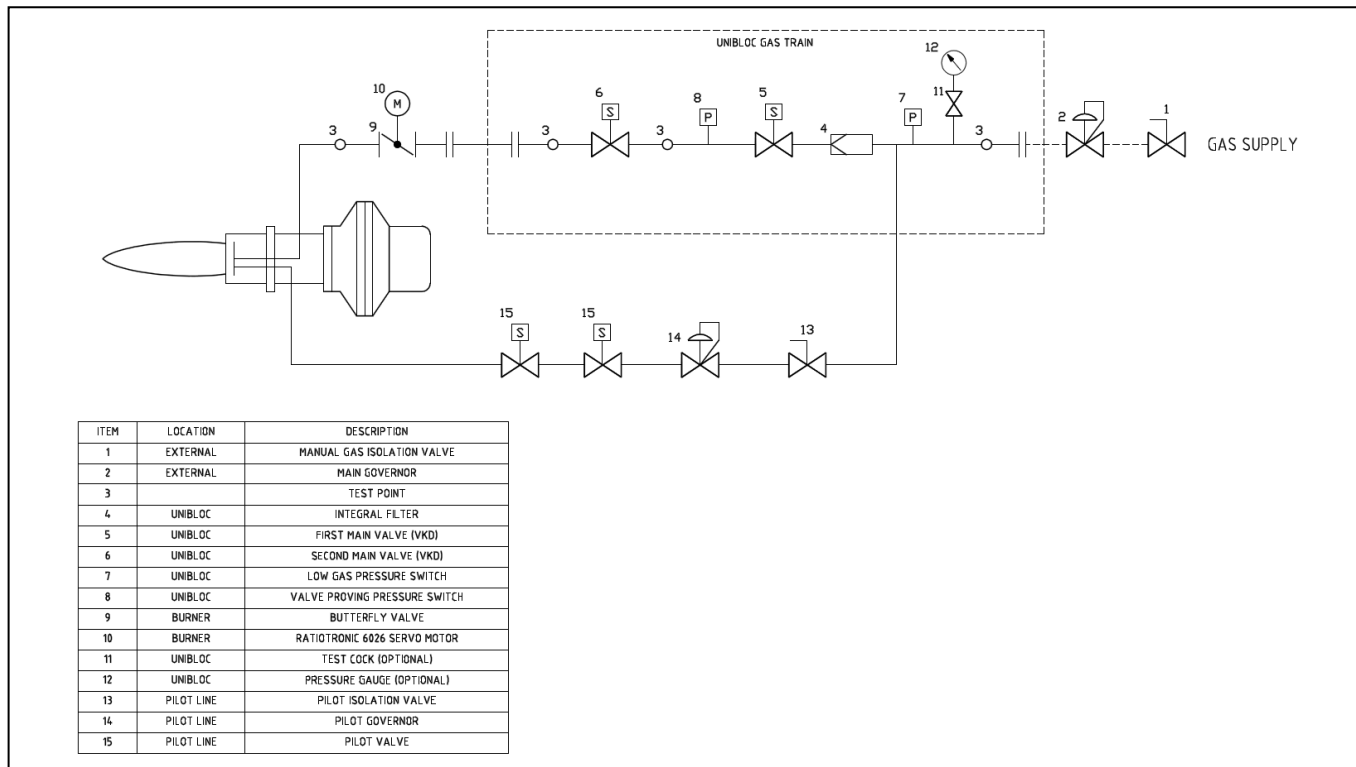
Typical Gas Line Schematic for Electronic Modulating Burners without Gas Pilot Line



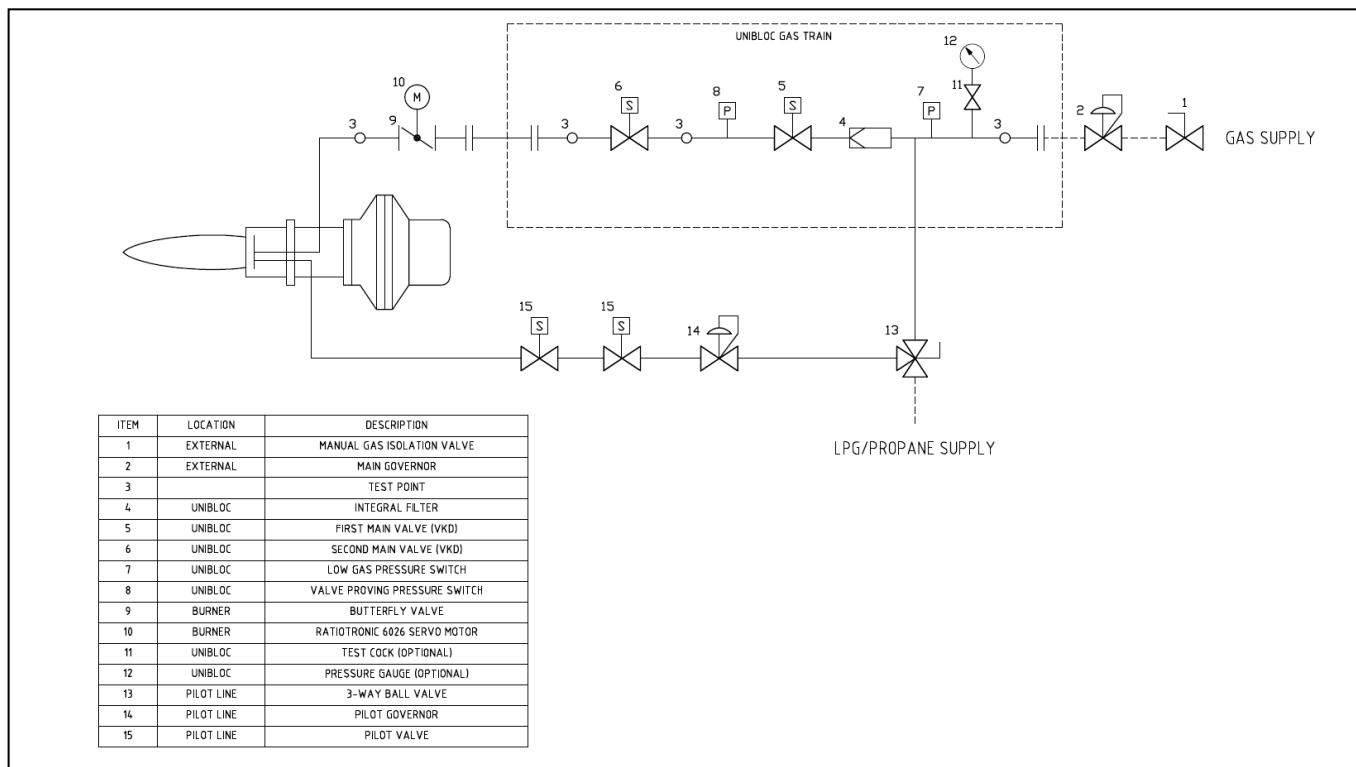
Typical Gas Line Schematic for Electronic Modulating Burners with Gas Pilot Line (Single Valve)



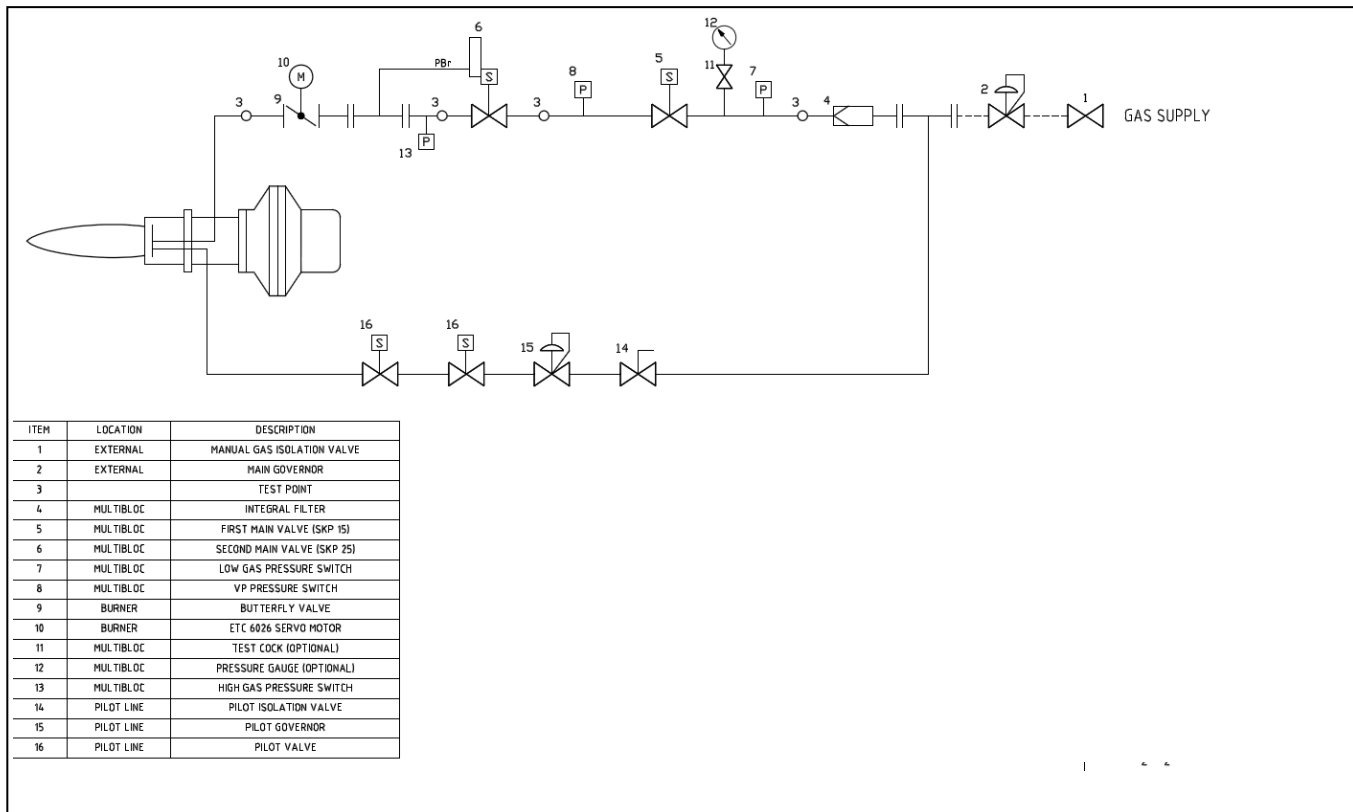
Typical Gas Line Schematic for Electronic Modulating Burners with Gas Pilot Line (Twin Valve)



Typical Gas Line Schematic for Electronic Modulating Burners with Gas Pilot Line (Twin Valve) and Optional LPG / Propane Connection



Typical Gas Line Schematic for Electronic Modulating Burners with VGD Multiblock with Gas Pilot Line (Twin Valve)



STANDARD SPECIFICATION DATA

BURNER TYPE	Firing Rate kW		GAS VOLUME (m ³ /HR) *1		FIRING MODE	Fan Motor kW	Fan Motor Current	Pump Motor kW	Voltage	Hz	Ph	Running Current
	MIN*3	MAX	MIN*3	MAX	Electronic Modulation *2							
TD6.1200 Z	1200	12000	115	1154	✓	28.5	52 Amp	5.5	400	50	3	56 Amp
TD6.1400 Y	1400	14000	134	1346	✓	37	64 Amp	5.5	400	50	3	68 Amp

*1 – Based on Nat. Gas C.V 10.4 kW/m³

*2 - Fitted with a Ratiotronic 6000 system

*3 – Based on 10:1 turn down fitted with VSD when firing on Natural Gas

COMBUSTION HEAD

The Dunphy dual fuel combustion head incorporates a two-stage fuel/air mixing system which eliminates low frequency resonance and allows maximum combustion efficiency with minimum emission levels.

This system combined with smooth ignition and extreme reliability make Dunphy combustion equipment the most sensible choice for all heating and process applications.

ULTRA LOW NO_x BURNERS

All Dunphy T-Series burners are fitted with low NO_x combustion heads as standard equipment.

As an optional extra all burners in this range can be fitted with a flue gas recirculation system to achieve ultra low NO_x emissions.

Dunphy Combustion Ltd have a policy of continuous development and reserve the right to change prices and specifications without prior notice.

Dunphy Combustion Ltd. has a policy of continuous development and reserve the right to change prices and specifications without prior notice