



+44 (0)1706 649217



+44 (0)1706 655512



www.dunphy.co.uk

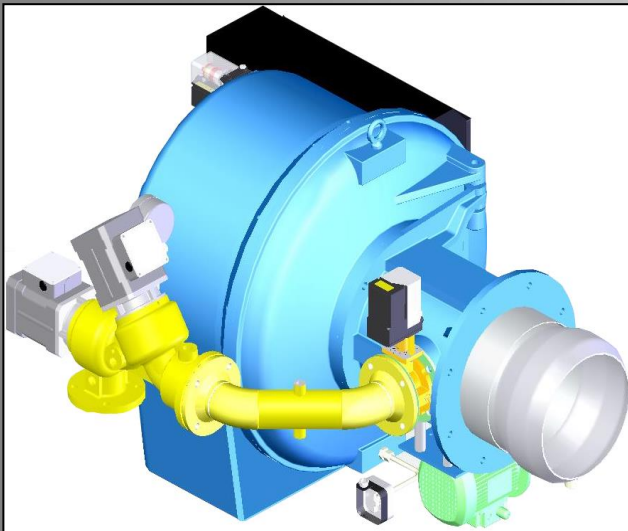
DATA SHEET

Model: TD2

Revision Date: October 2019

Output: 100 – 1550 kW

Revision Number: DS.TD2.17



- ◆ All models approved to current British and European Standards.
- ◆ All burners in the T.D. range are of the fan assisted, nozzle mix type and operation is fully automatic.
- ◆ CE number for TD2 Series burners are
 - ◆ TD2.100/115/155 – CE 679311



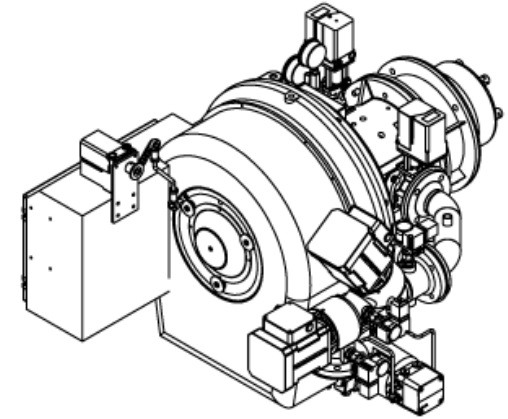
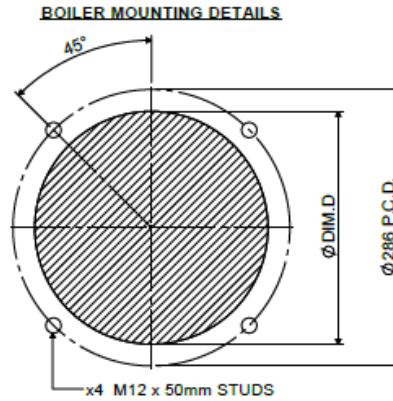
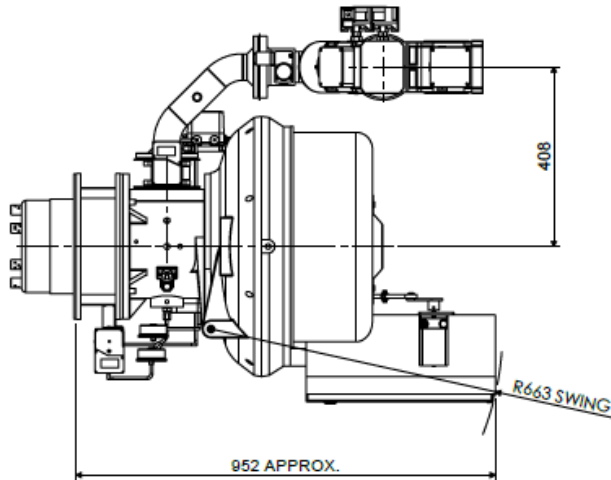
FM 24868

BURNER DIMENSIONS

- ◆ Drawings shown on the following pages
- ◆ All dimensions in mm unless otherwise stated.
- ◆ The minimum standard dimension for 'PROJ' is 130mm for standard oil burners, 280mm for multi-oil burners. However, it can be varied to suit application. Requirements should be stated when unit is ordered.
- ◆ Burners supplied as Left hand hinge or Right hand hinge
- ◆ The swing radius shown is the average; this can vary on non-standard burners.
- ◆ Please check the issue number to ensure validity.

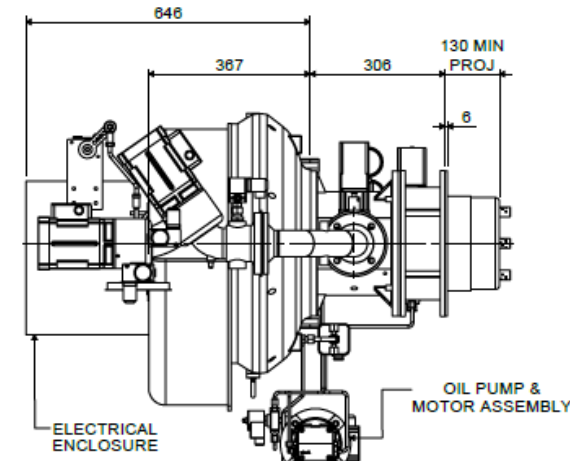
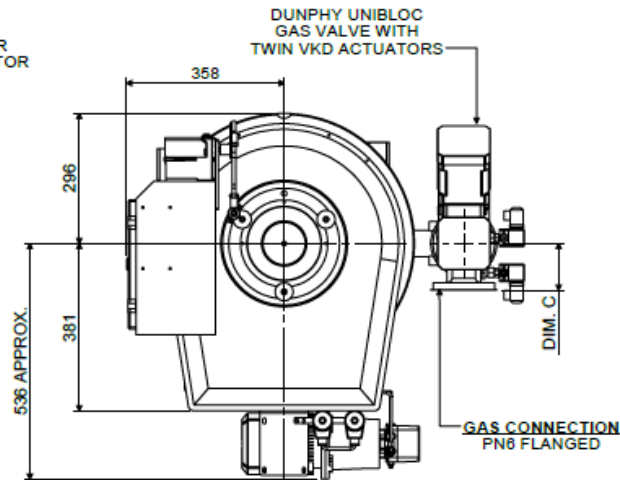
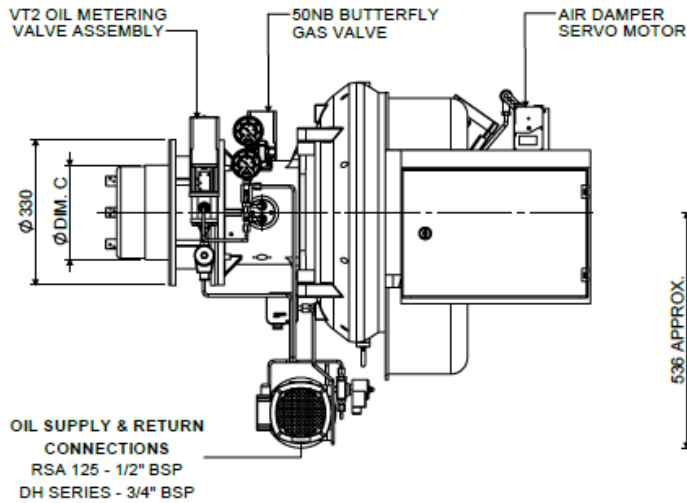
ELECTRONIC MODULATION LHH WITH UNIBLOC GAS VALVE

TD2 ELECTRONIC MODULATION LHH BURNER WITH UNIBLOC GAS VALVE



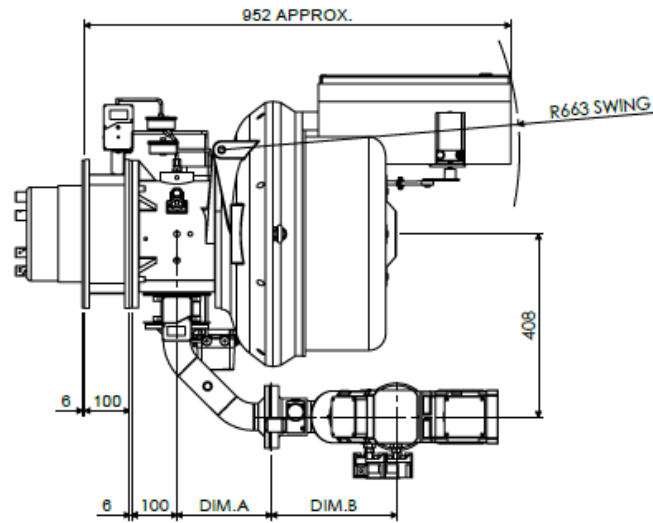
BURNER TYPE	DIM.C	DIM.D
TD 2.100 Z	Ø218	Ø223
TD 2.115 Z	Ø218	Ø223
TD 2.155 Y	Ø235	Ø250

UNIBLOC SIZE	DIM.A	DIM.B	DIM.E
DN50	211	279	108
DN65	300	292	122

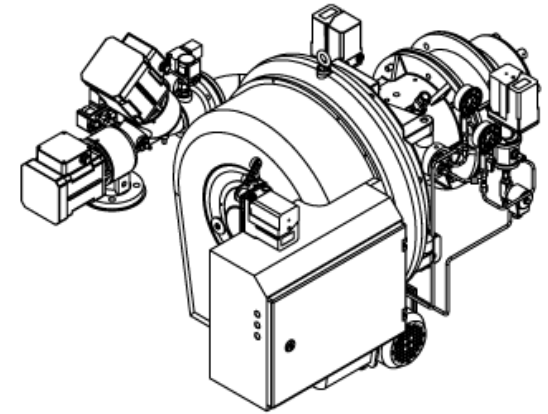
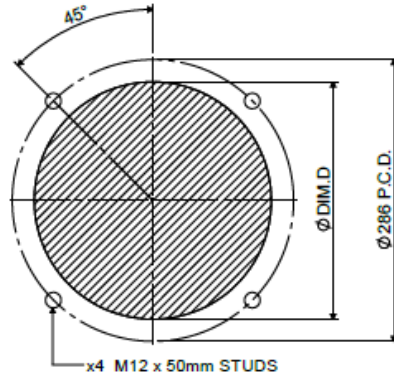


ELECTRONIC MODULATION RHH WITH UNIBLOC GAS VALVE

TD2 ELECTRONIC MODULATION RHH BURNER WITH UNIBLOC GAS VALVE

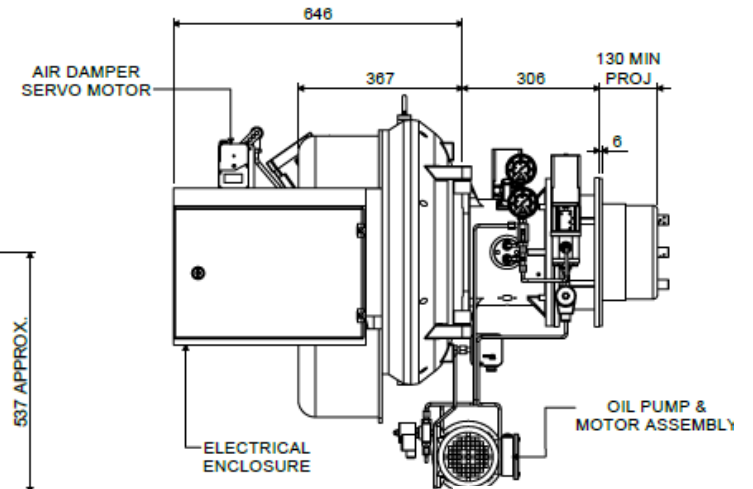
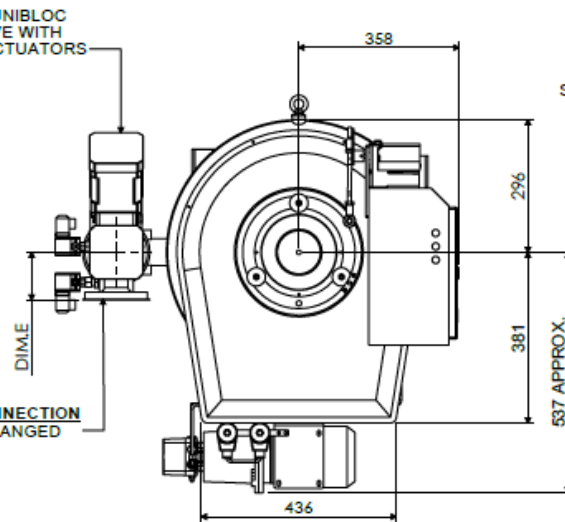
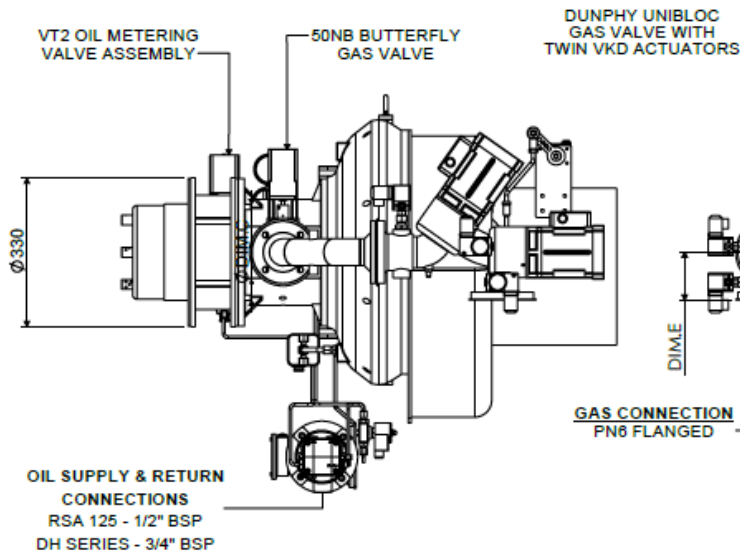


BOILER MOUNTING DETAILS



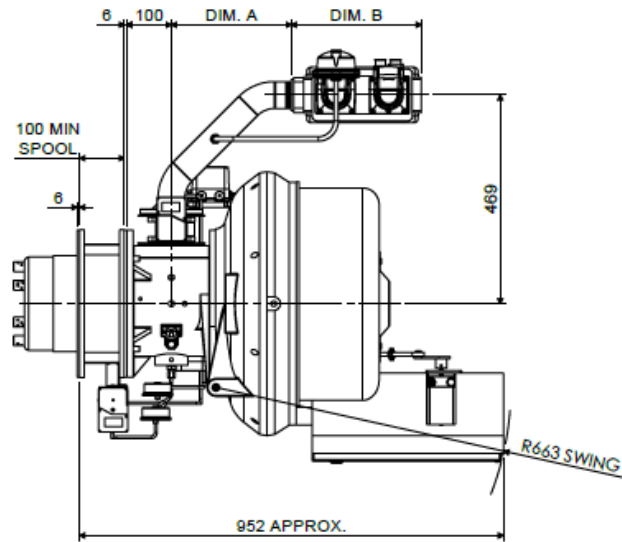
BURNER TYPE	DIM.C	DIM.D
TD 2.100 Z	Ø216	Ø223
TD 2.115 Z	Ø216	Ø223
TD 2.155 Y	Ø235	Ø250

UNIBLOC SIZE	DIM.A	DIM.B	DIM.E
DN50	211	279	106
DN65	300	292	122

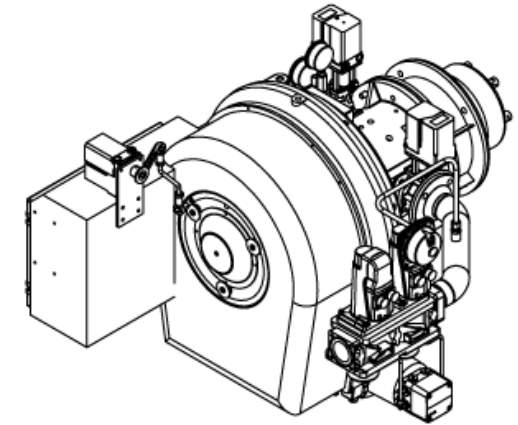
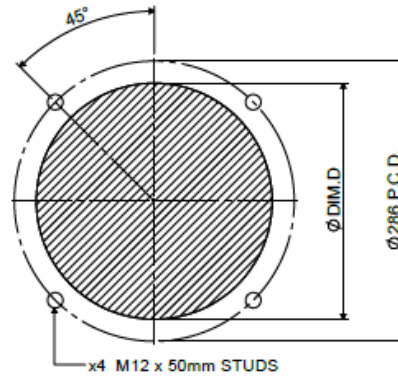


ELECTRONIC MODULATION LHH WITH VGD GAS VALVE

TD2 ELECTRONIC MODULATION LHH BURNER WITH VGD GAS VALVE

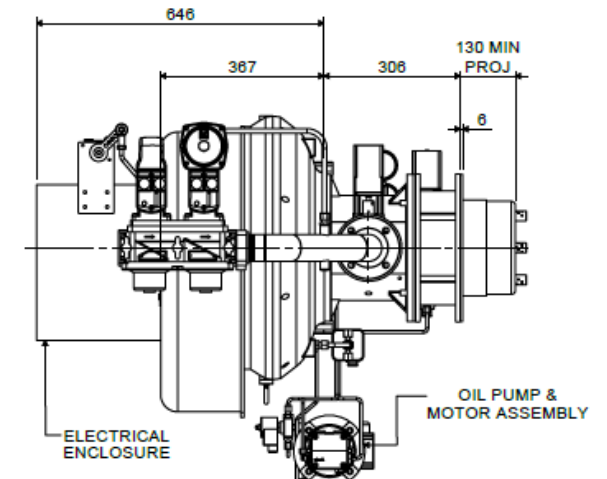
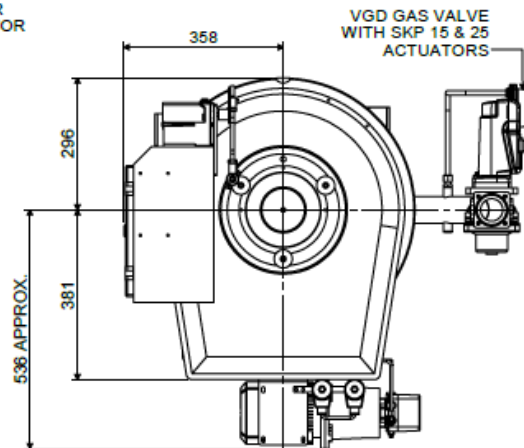
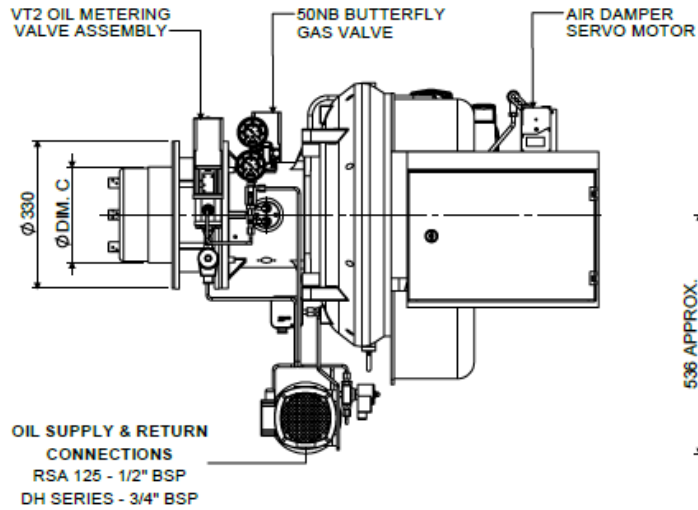


BOILER MOUNTING DETAILS



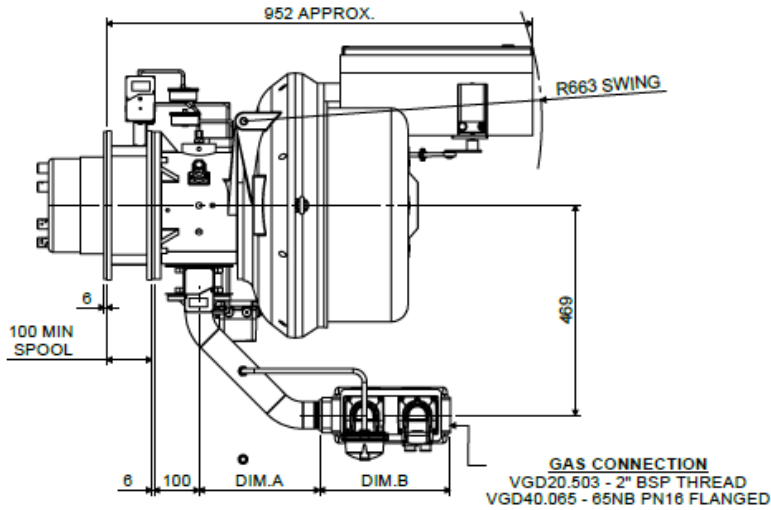
BURNER TYPE	DIM. C	DIM. D
TD 2.100 Z	Ø216	Ø223
TD 2.115 Z	Ø216	Ø223
TD 2.155 Y	Ø235	Ø250

VGD SIZE	DIM. A	DIM. B
VGD20.503	273	319
VGD40.065	366	290

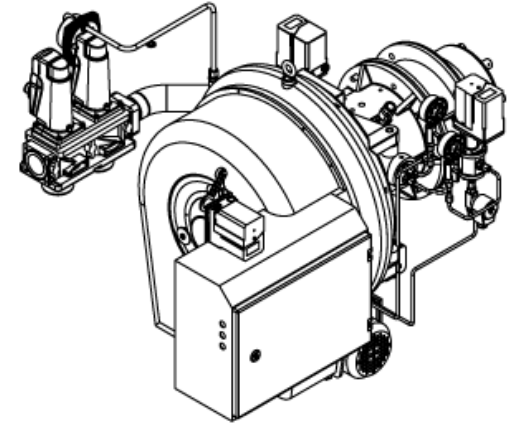
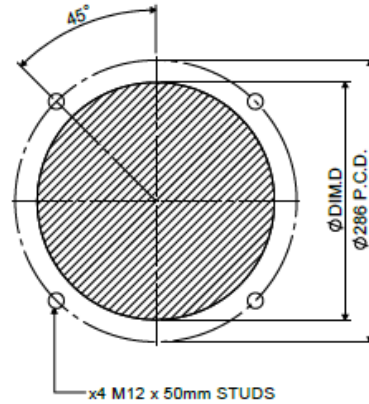


ELECTRONIC MODULATION RHH WITH VGD GAS VALVE

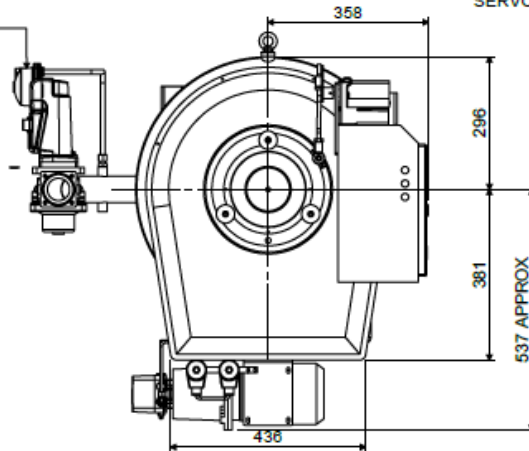
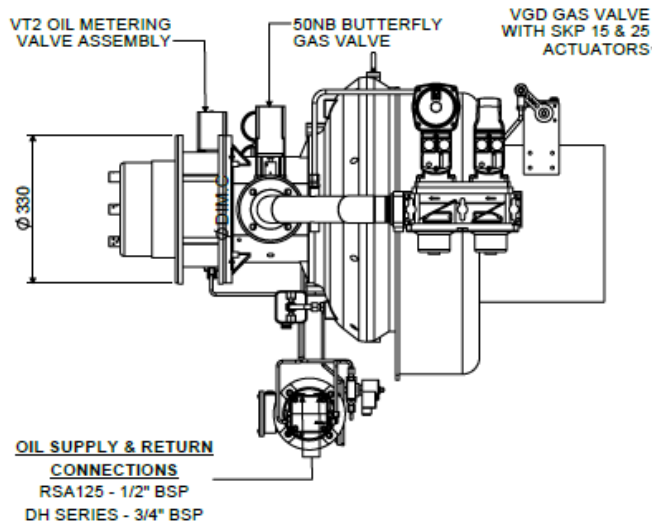
TD2 ELECTRONIC MODULATION RHH BURNER WITH VGD GAS VALVE



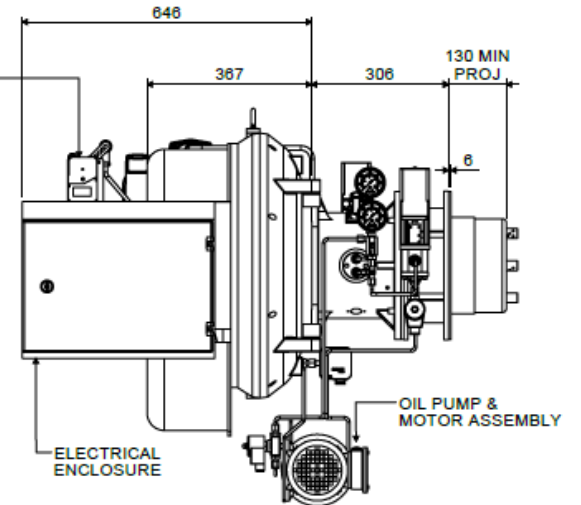
BOILER MOUNTING DETAILS



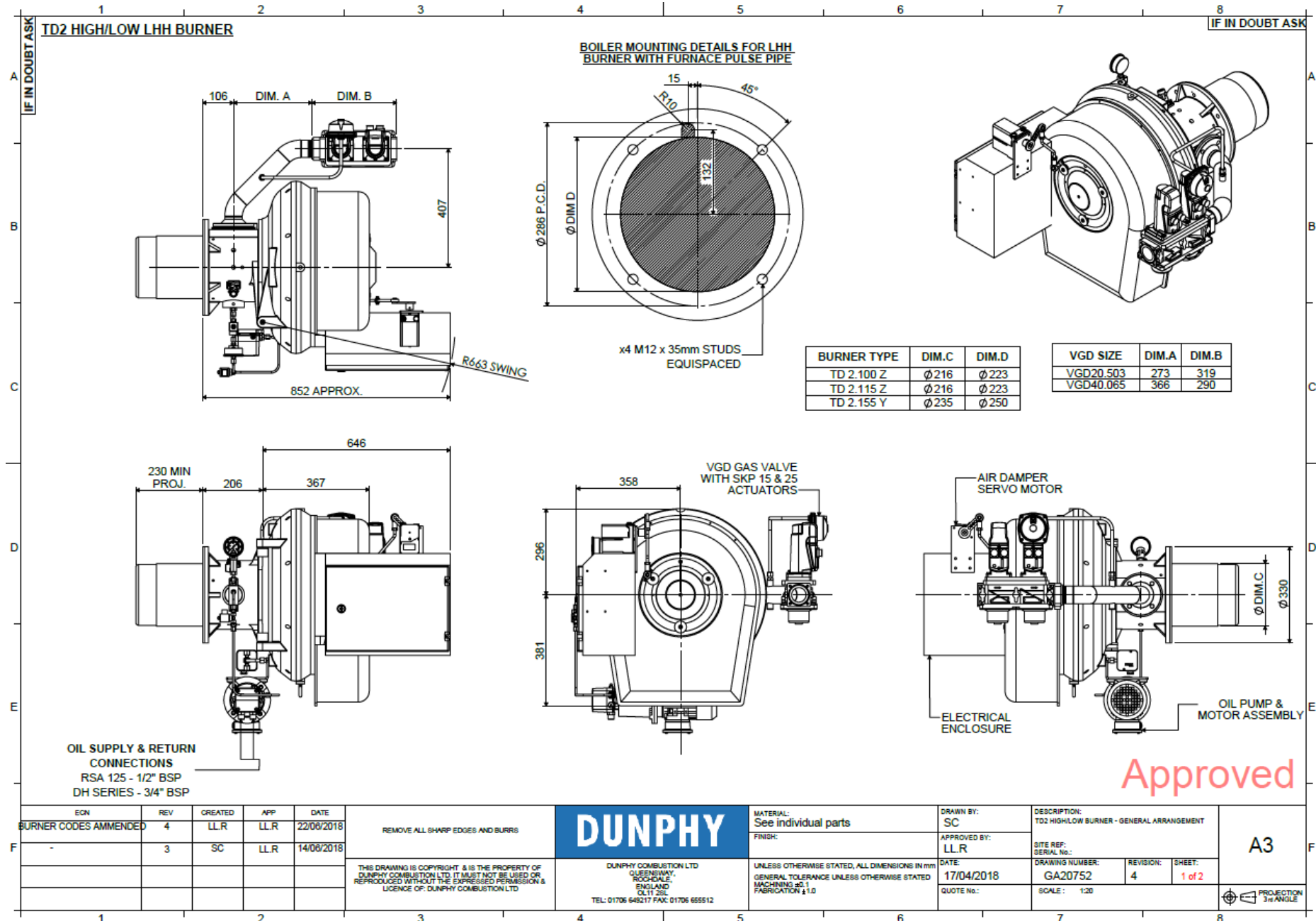
BURNER TYPE	DIM.C	DIM.D	VGD SIZE	DIM.A	DIM.B
TD 2.100 Z	Ø216	Ø223	VGD20.503	273	319
TD 2.115 Z	Ø216	Ø223	VGD40.065	386	290
TD 2.155 Y	Ø235	Ø250			



AIR DAMPER SERVO MOTOR



HIGH / LOW LHH WITH VGD GAS VALVE



BURNER TYPE	DIM.C	DIM.D
TD 2.100 Z	∅ 216	∅ 223
TD 2.115 Z	∅ 216	∅ 223
TD 2.155 Y	∅ 235	∅ 250

VGD SIZE	DIM.A	DIM.B
VGD20.503	273	319
VGD40.065	366	290

Approved

ECN	REV	CREATED	APP	DATE
BURNER CODES AMENDED	4	LLR	LLR	22/08/2018
	3	SC	LLR	14/08/2018

REMOVE ALL SHARP EDGES AND BURRS

THIS DRAWING IS COPYRIGHT & IS THE PROPERTY OF DUNPHY COMBUSTION LTD. IT MUST NOT BE USED OR REPRODUCED WITHOUT THE EXPRESSED PERMISSION & LICENCE OF DUNPHY COMBUSTION LTD



DUNPHY COMBUSTION LTD
 GUESWARY,
 ROOGDALE,
 ENGLAND
 OL11 2SL
 TEL: 01706 648217 FAX: 01706 655512

MATERIAL:
See individual parts

FINISH:

UNLESS OTHERWISE STATED, ALL DIMENSIONS IN mm
 GENERAL TOLERANCE UNLESS OTHERWISE STATED
 MACHINING: ±0.1
 FABRICATION: ±1.0

DRAWN BY:
SC

APPROVED BY:
LLR

DATE:
17/04/2018

QUOTE No.:

DESCRIPTION:
TD2 HIGH/LOW BURNER - GENERAL ARRANGEMENT

SITE REF:
SERIAL No.:

DRAWING NUMBER:
GA20752

REVISION:
4

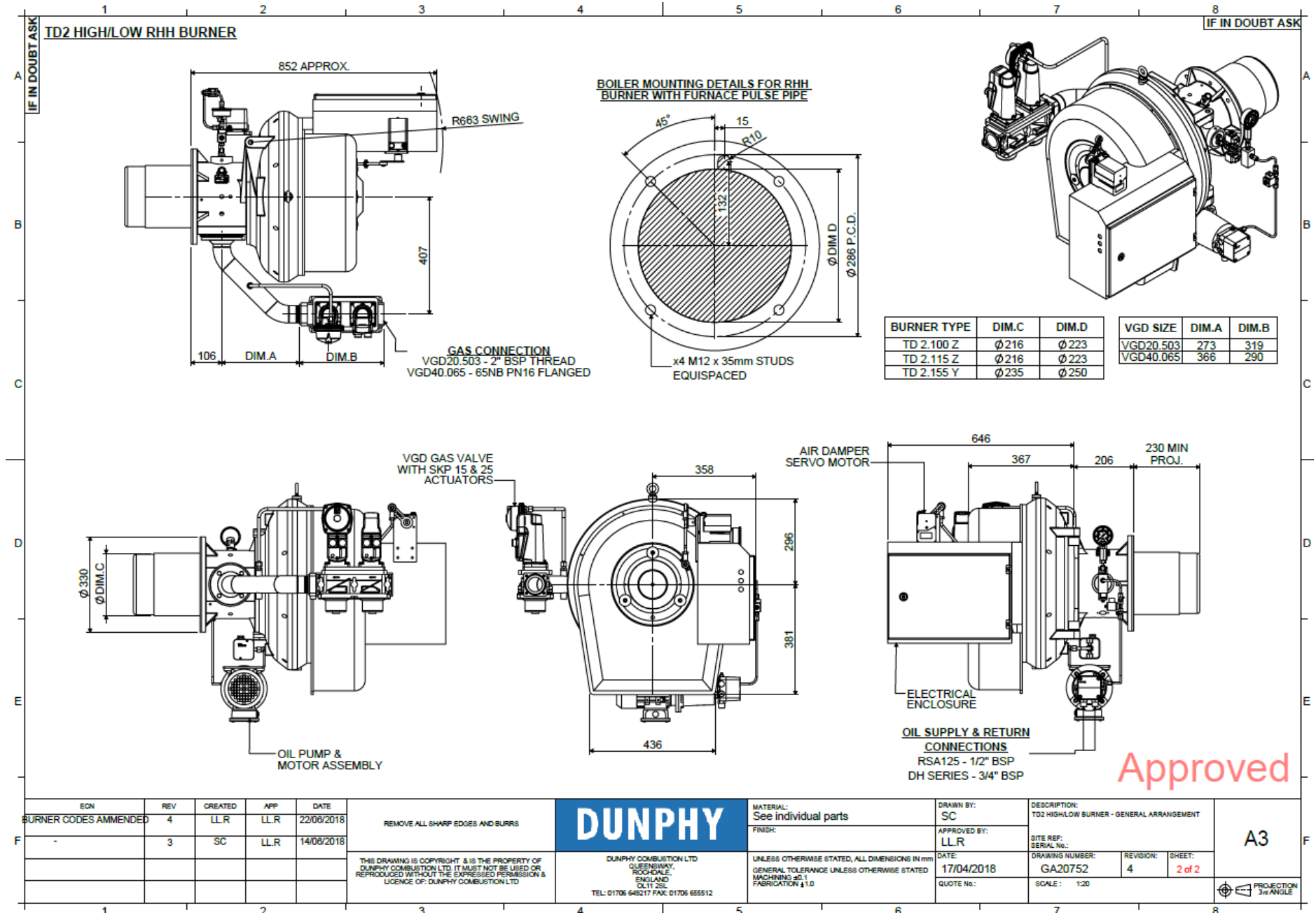
SHEET:
1 of 2

SCALE: 1:20

A3



HIGH / LOW RHH WITH VGD GAS VALVE

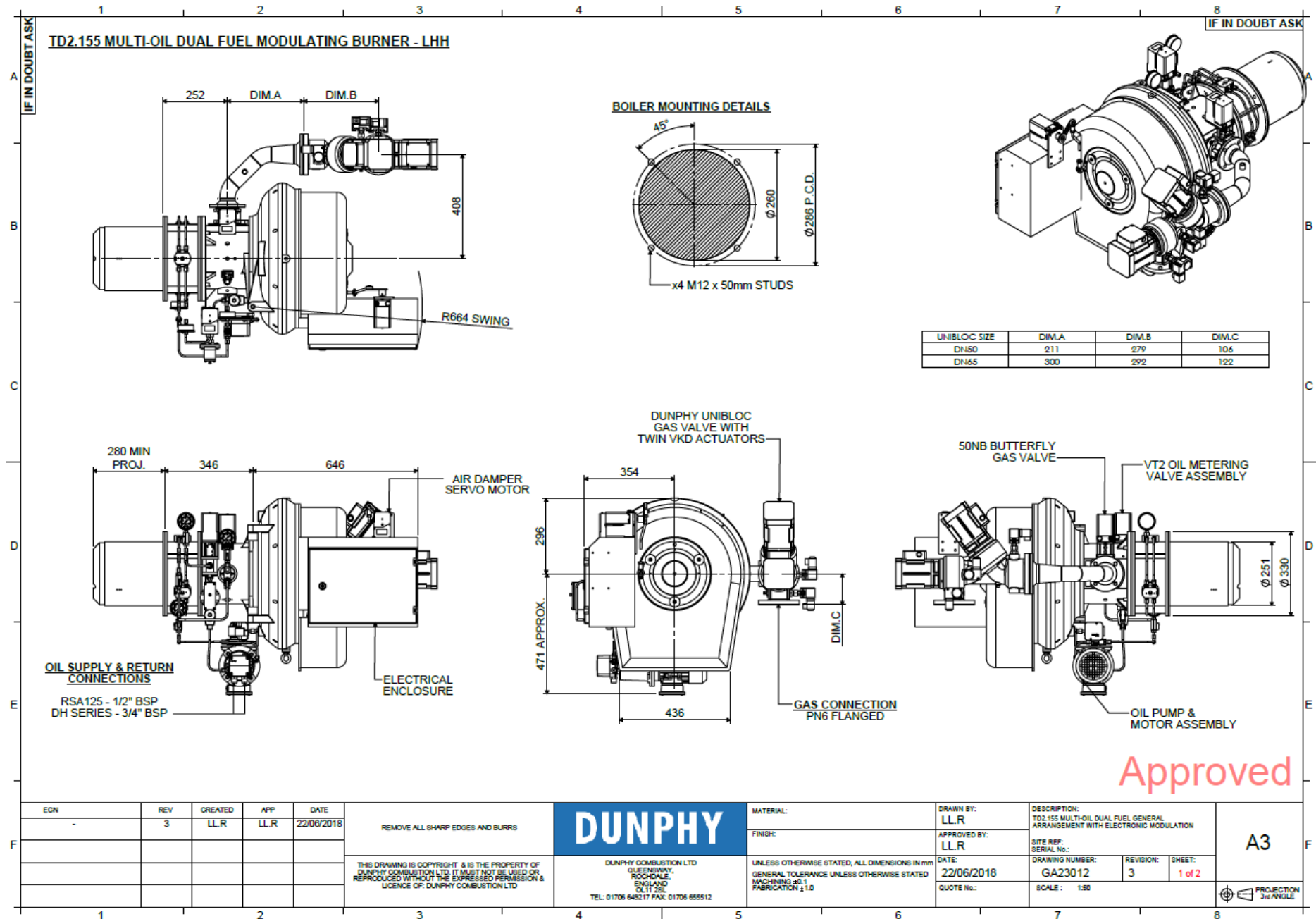


Approved

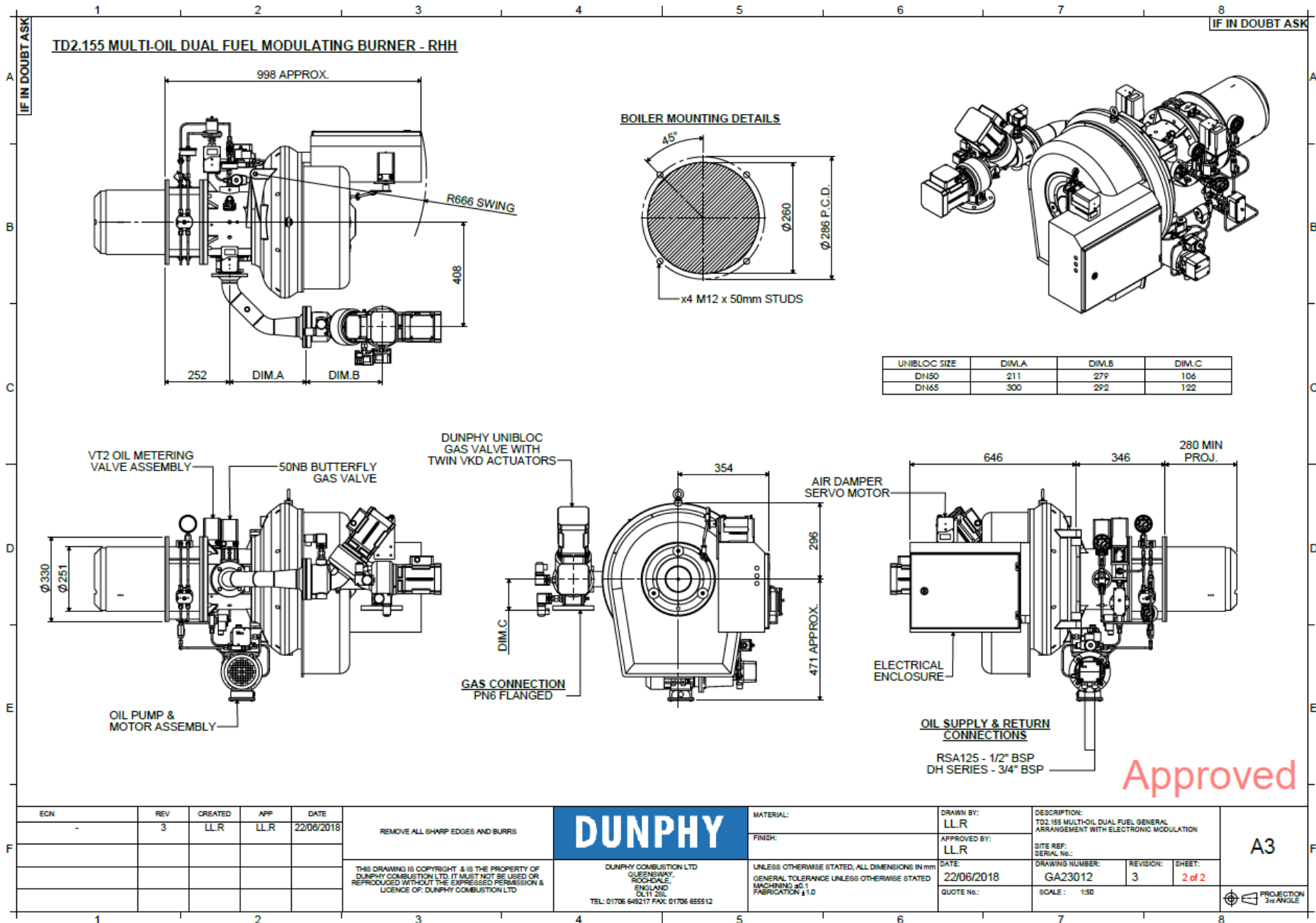
ECN	REV	CREATED	APP	DATE	REMOVE ALL SHARP EDGES AND BURRS	DUNPHY	MATERIAL:	DRAWN BY:	DESCRIPTION:	A3	
BURNER CODES AMENDED	4	LL.R	LL.R	22/06/2018			See individual parts	SC	TD2 HIGH/LOW BURNER - GENERAL ARRANGEMENT		
	3	SC	LL.R	14/06/2018	THIS DRAWING IS COPYRIGHT & IS THE PROPERTY OF DUNPHY COMBUSTION LTD. IT MUST NOT BE USED OR REPRODUCED WITHOUT THE EXPRESSED PERMISSION & LICENCE OF DUNPHY COMBUSTION LTD	DUNPHY COMBUSTION LTD QUEENSWAY, ROCKDALE, ENGLAND OL11 2SL TEL: 01706 648217 FAX: 01706 655512	FINISH:	APPROVED BY:	SITE REF:		
							UNLESS OTHERWISE STATED, ALL DIMENSIONS IN mm GENERAL TOLERANCE UNLESS OTHERWISE STATED MACHINING ±0.1 FABRICATION ±1.0	LL.R	GA20752	SERIAL No.:	
								DATE:	DRAWING NUMBER:	REVISION:	SHEET:
								17/04/2018	GA20752	4	2 of 2
								QUOTE No.:	SCALE: 1:20		



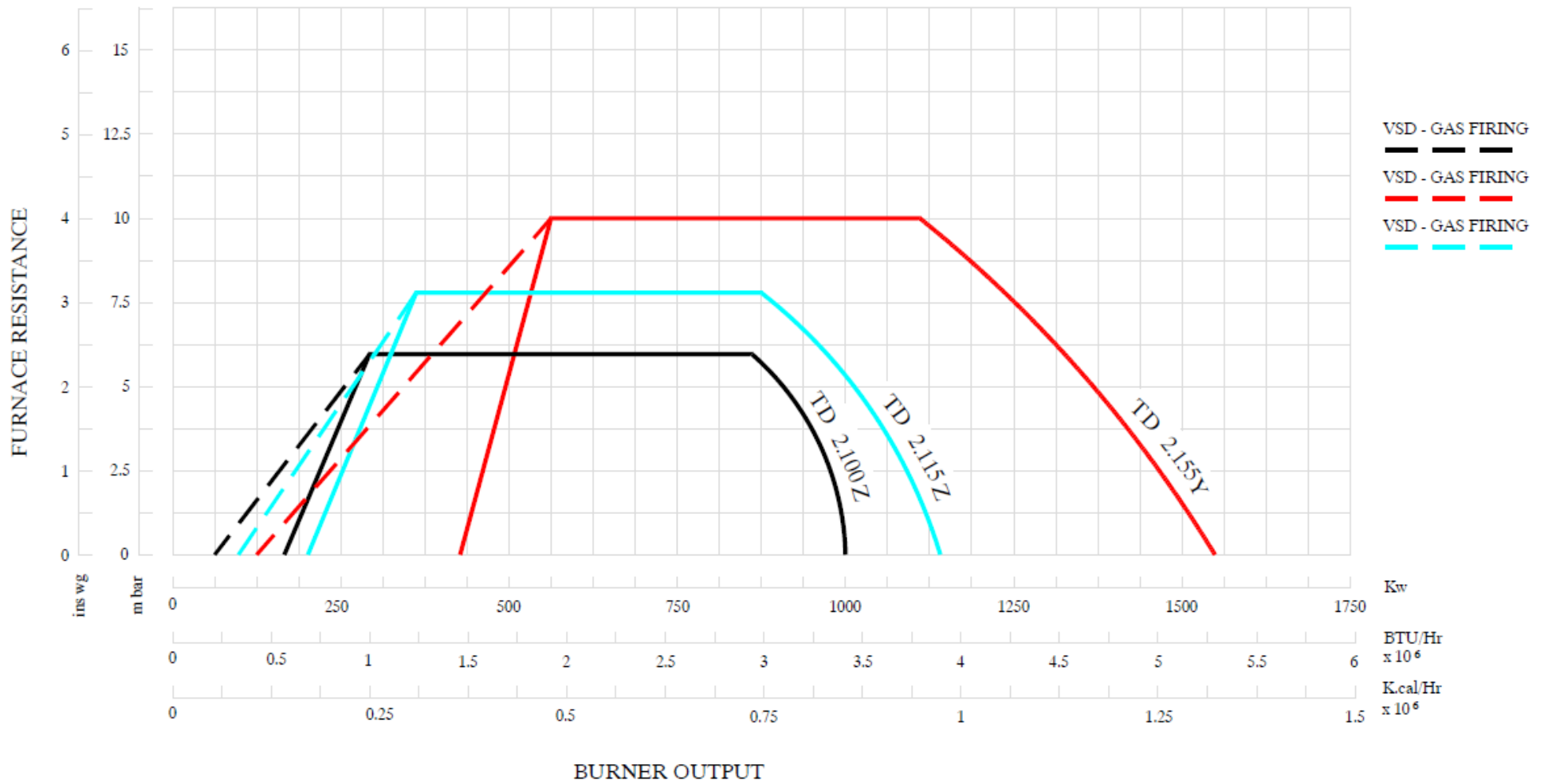
TD2.155 MODULATING MULTI-OIL DUAL FUEL LHH WITH UNIBLOC GAS VALVE



TD2.155 MODULATING MULTI-OIL DUAL FUEL RHH WITH UNIBLOC GAS VALVE

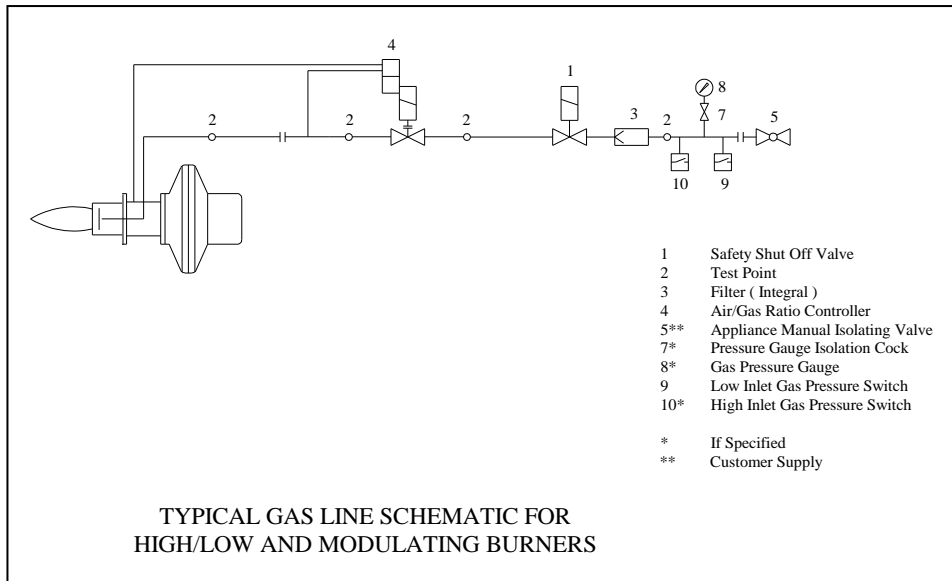


BURNER RATING GRAPH

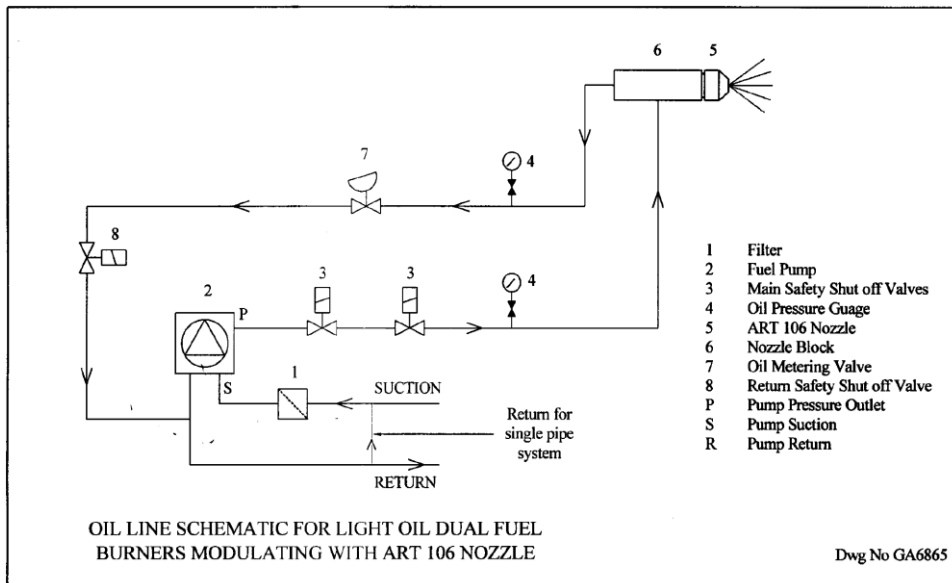


BURNER SCHEMATICS

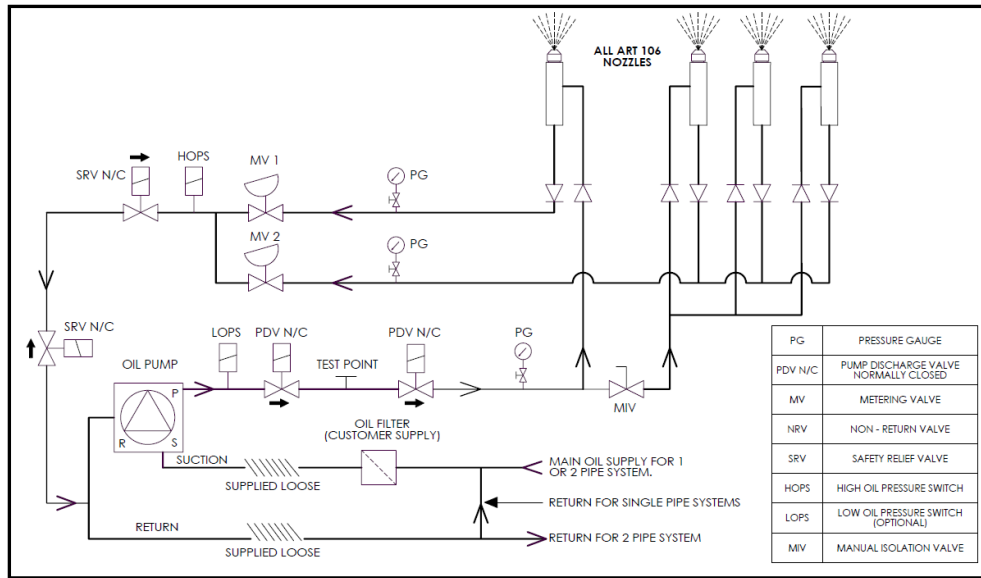
TYPICAL GAS LINE SCHEMATIC FOR HIGH/LOW AND MODULATING BURNERS



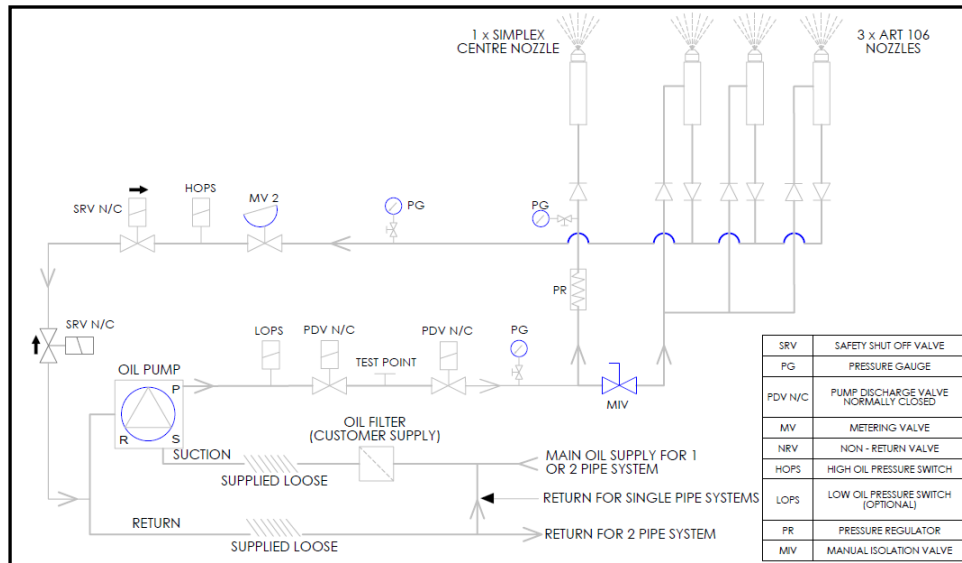
TYPICAL OIL LINE SCHEMATIC FOR LIGHT OIL DUAL FUEL BURNERS MODULATING WITH ART 106 NOZZLE



TYPICAL SCHEMATIC FOR MULTI NOZZLE SYSTEM BURNER (WITH SRV & LOPS & HOPS)



TYPICAL SCHEMATIC FOR MULTI NOZZLE SYSTEM BURNER FIXED CENTRAL NOZZLE



STANDARD SPECIFICATION DATA

BURNER TYPE	Firing Rate kW		GAS VOLUME (m ³ /HR) *1		FIRING MODE OPTIONS				Motor kW	Voltage	Hz	Ph	Running Current (Amp)	Starting Current (Amp) *4
	MIN *3	MAX	MIN *3	MAX	Mod Gas High / Low Oil	High / Low	Electronic Modulation*2	Electronic Modulation with VSD						
TD2.100	100	1000	9.5	95.6	✓	✓	✓	✓	1.1	380-420	50	3	7	17
TD2.115	115	1150	109	109.9	✓	✓	✓	✓	1.5	380-420	50	3	8	32
TD2.155	155	1550	14.8	148.2	✓	✓	✓	✓	2.2	380-420	50	3	9	41

*1 – Based on Nat. Gas C.V 10.84 kWh/m³

*2 - Fitted with a Ratiotronic 6000 system

*3 – Based on 10:1 turn down fitted with VSD

*4 – When fitted with VSD the starting current is 0 Amps

COMBUSTION HEAD

The Dunphy dual fuel combustion head incorporates a two-stage fuel/air mixing system which eliminates low frequency resonance and allows maximum combustion efficiency with minimum emission levels.

This system combined with smooth ignition and extreme reliability makes Dunphy combustion equipment the most sensible choice for all heating and process applications.

ULTRA LOW NO_x BURNERS

All Dunphy T-Series burners are fitted with low NO_x combustion heads as standard equipment.

As an optional extra all burners in this range can be fitted with a flue gas recirculation system to achieve ultra low NO_x emissions.

Dunphy Combustion Ltd has a policy of continuous development and reserve the right to change prices and specifications without prior notice.

Dunphy Combustion Ltd. has a policy of continuous development and reserve the right to change prices and specifications without prior notice