



+44 (0)1706 649217



+44 (0)1706 655512



www.dunphy.co.uk

DATA SHEET

Model: TD1

Revision Date: September 2015

Output: 170 – 650 kW

Revision Number: DS.TD1.09

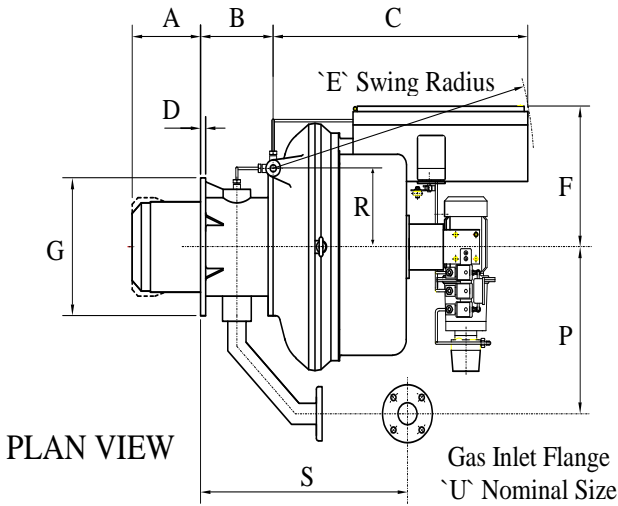


- ◆ All models approved to current British and European Standards.
- ◆ All burners in the T.D. range are of the fan assisted, nozzle mix type and operation is fully automatic.
- ◆ CE number for TD1 Series burners is CE 86/AR/417.
- ◆ Baumuster number for TD1 Series burners is 5G 112/93.

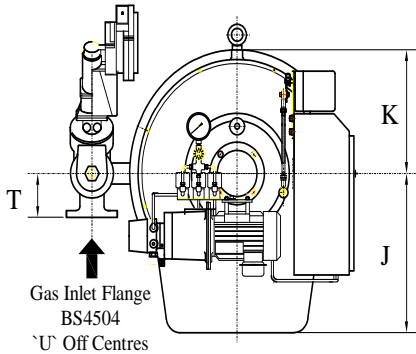
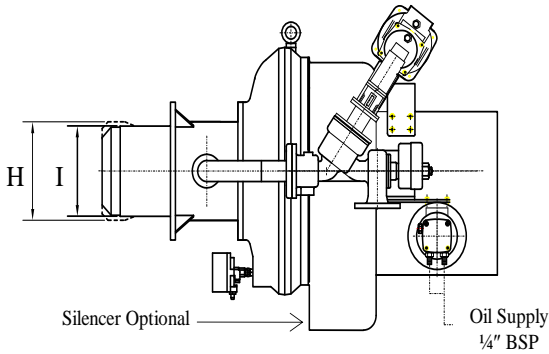
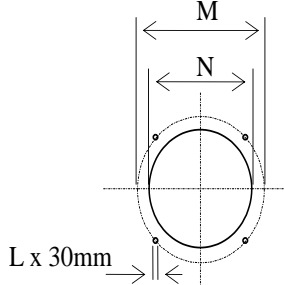


FM 24868

BURNER DIMENSIONS



BURNER SHOWN IS TD1 HIGH/LOW WITH 40 NS UNIBLOC GAS TRAIN



TD1 DUAL FUEL BURNER

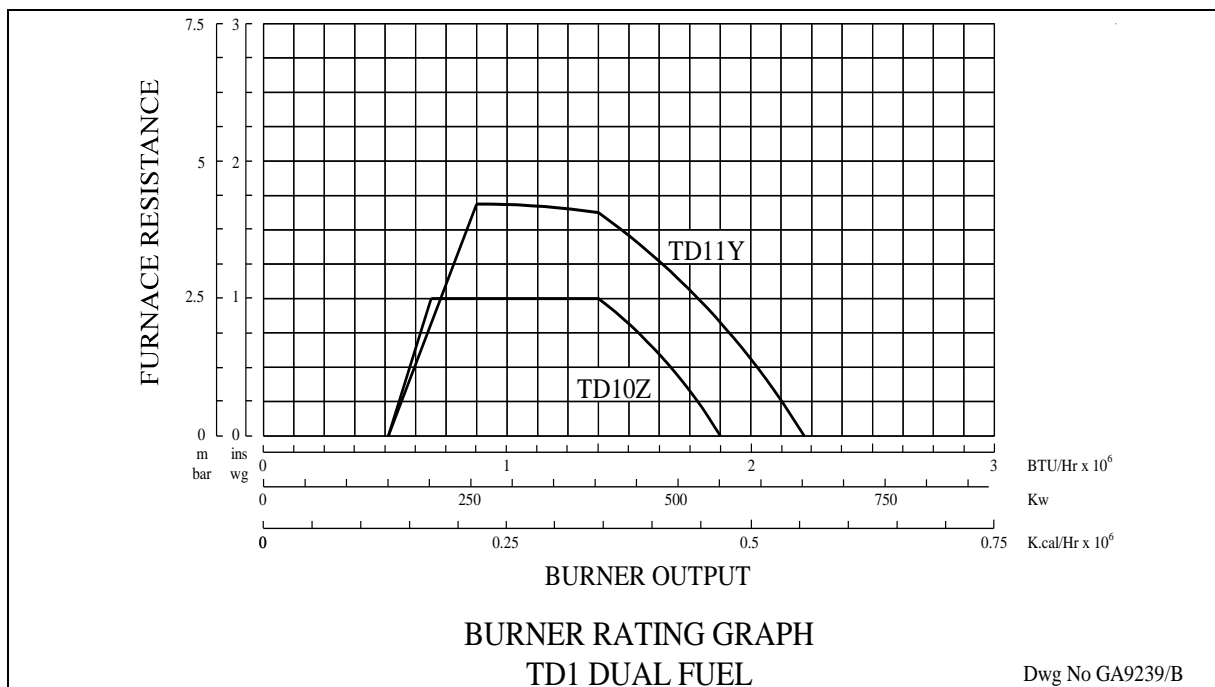
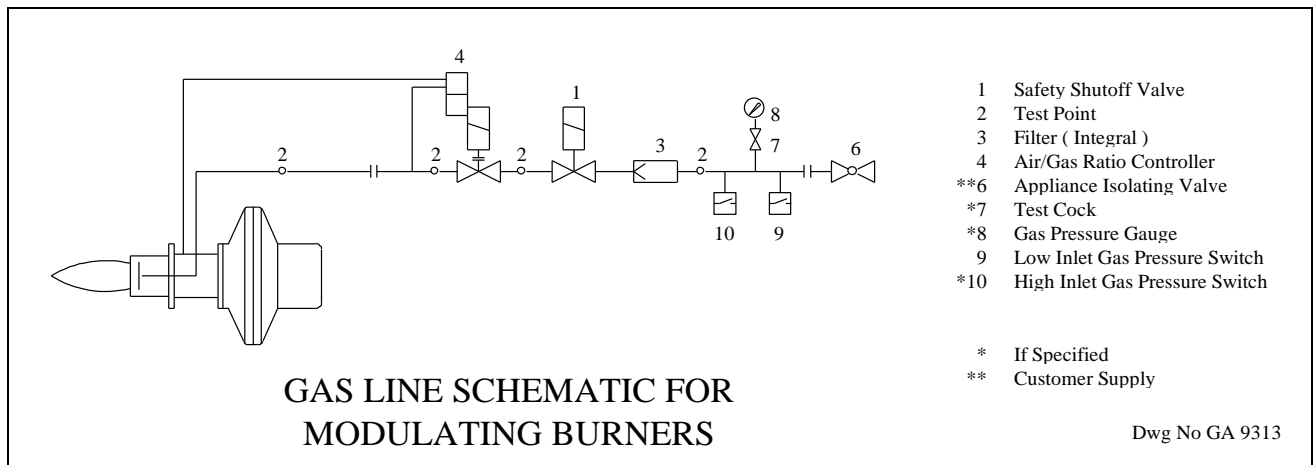
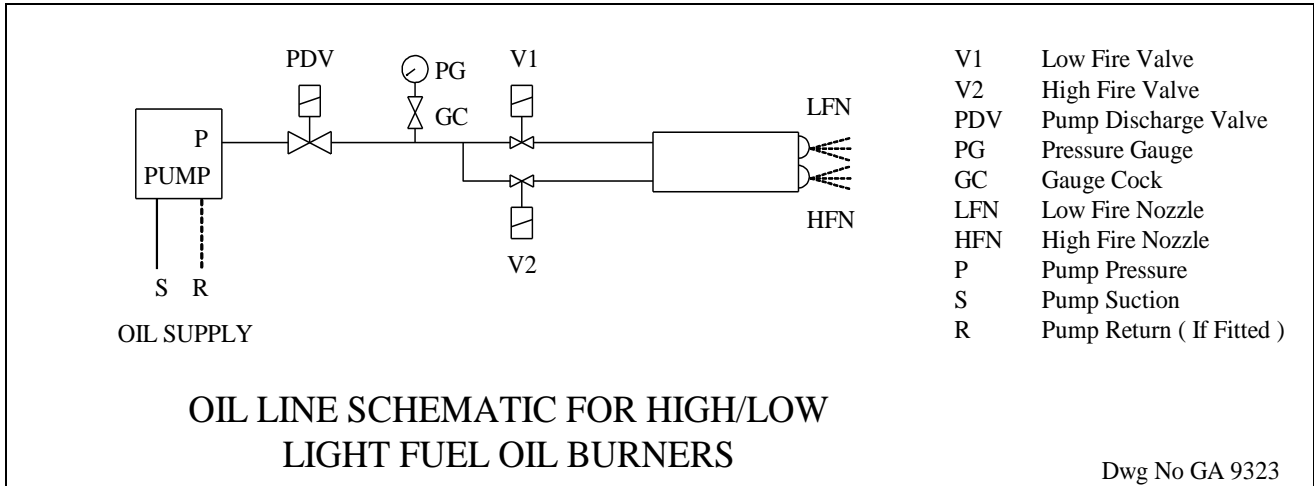
Dwg No GA 9383A

| UNIBLOC | S | T | U | Weight |
|---------|-----|-----|----|--------|
| 40 NS | 490 | 89 | 40 | 18 |
| 50 NS | 610 | 105 | 50 | 24 |

| | A | B | C | D | E | F | G | H | I | J | K | L | M | N | P | R |
|-------|-----|-----|-----|----|-----|-----|-----|-----|-----|-----|-----|-----|-----|-----|-----|-----|
| TD10Z | 230 | 143 | 667 | 14 | 690 | 325 | 251 | | 165 | 300 | 251 | M10 | 222 | 175 | 310 | 136 |
| TD11Y | 230 | 143 | 667 | 14 | 690 | 325 | 251 | 190 | | 300 | 251 | M10 | 222 | 200 | 310 | 136 |

- ◆ All dimensions in mm unless otherwise stated.
- ◆ Dimension 'A' is the minimum standard dimension and can be varied to suit application, requirements should be stated when unit is ordered.
- ◆ Dimension 'E' is the average swing radius; this can vary on non-standard burners.
- ◆ Burner shown is right-hand hinge; left-hand hinge is available as required.
- ◆ Please check the issue number to ensure validity.

BURNER RATING GRAPH & SCHEMATICS



STANDARD SPECIFICATION DATA

| BURNER TYPE | Firing Rate kW | | FIRING MODE OPTIONS | | | | Fan Motor kW | Pump Motor kW | Voltage | Hz | Ph | Running Current | Starting Current | Weight |
|-------------|----------------|-----|---------------------|------------|--------------------------------|------------------------|--------------|---------------|---------|----|----|-----------------|------------------|--------|
| | MIN | MAX | High / Low Mod Gas | High / Low | Electro / Pneumatic Modulation | Electronic Modulation* | | | | | | | | |
| TD10Z | 170 | 550 | ✓ | ✓ | ✓ | ✓ | 0.75 | 0.55 | 380-420 | 50 | 3 | 3.5 Amp | 11 Amp | 48 |
| TD11Y | 170 | 650 | ✓ | ✓ | ✓ | ✓ | 0.75 | 0.55 | 380-420 | 50 | 3 | 3.5 Amp | 11 Amp | 51 |

* Fitted with a Ratiotronic 3000 system

Dunphy Combustion Ltd. has a policy of continuous development and reserve the right to change prices and specifications without prior notice