



+44 (0)1706 649217



+44 (0)1706 655512



www.dunphy.co.uk

DATA SHEET

Model: TG1

Revision Date: September 2015

Output: 170 – 650 kW

Revision Number: DS.TG1.10

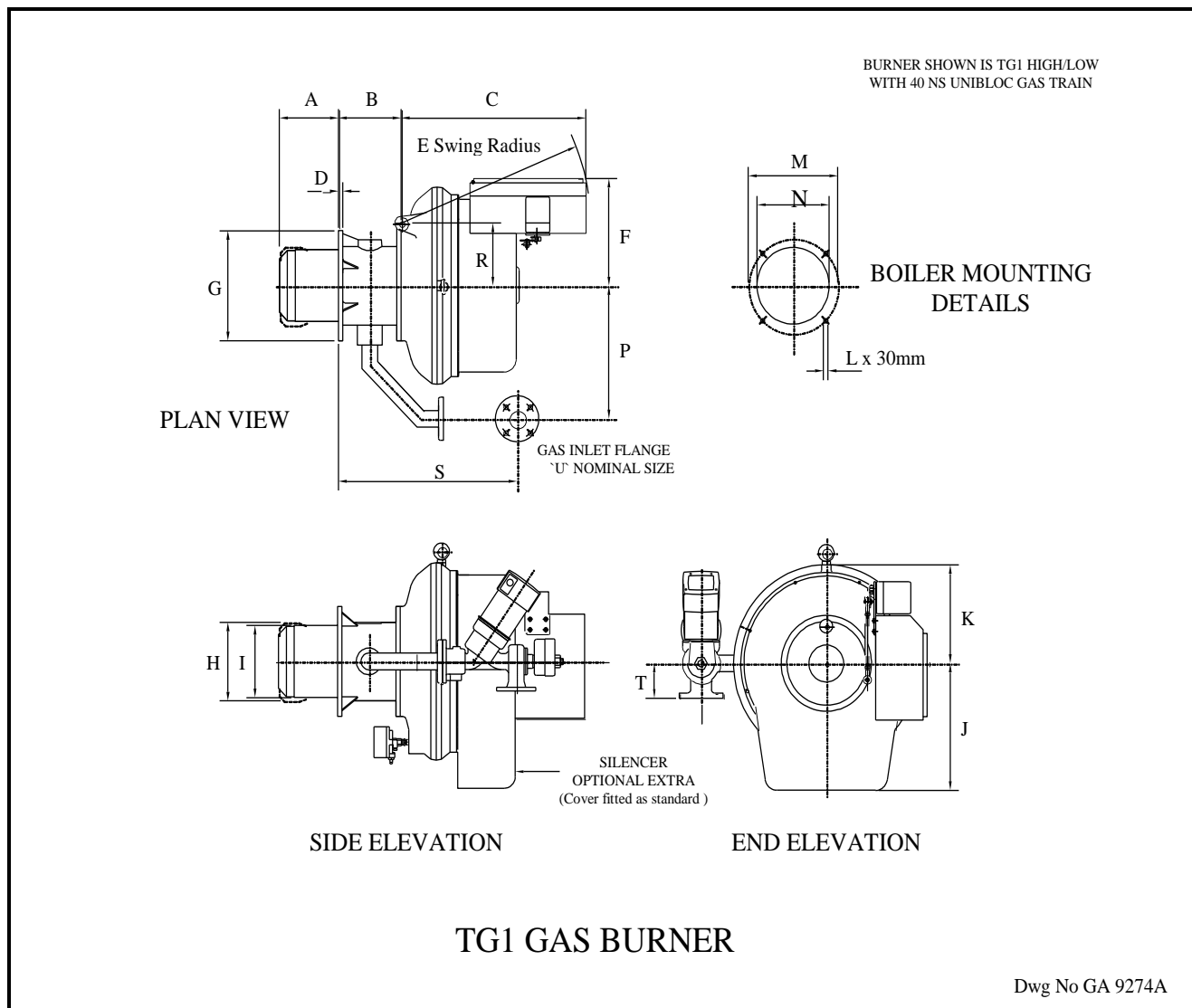


- ◆ All models have been independently tested to the European Standard BS EN 676 'Automatic forced draught burners for Gaseous fuels
- ◆ CE number for TG1 Series burner is CE 86/AQ/264.



FM 24868

BURNER DIMENSIONS

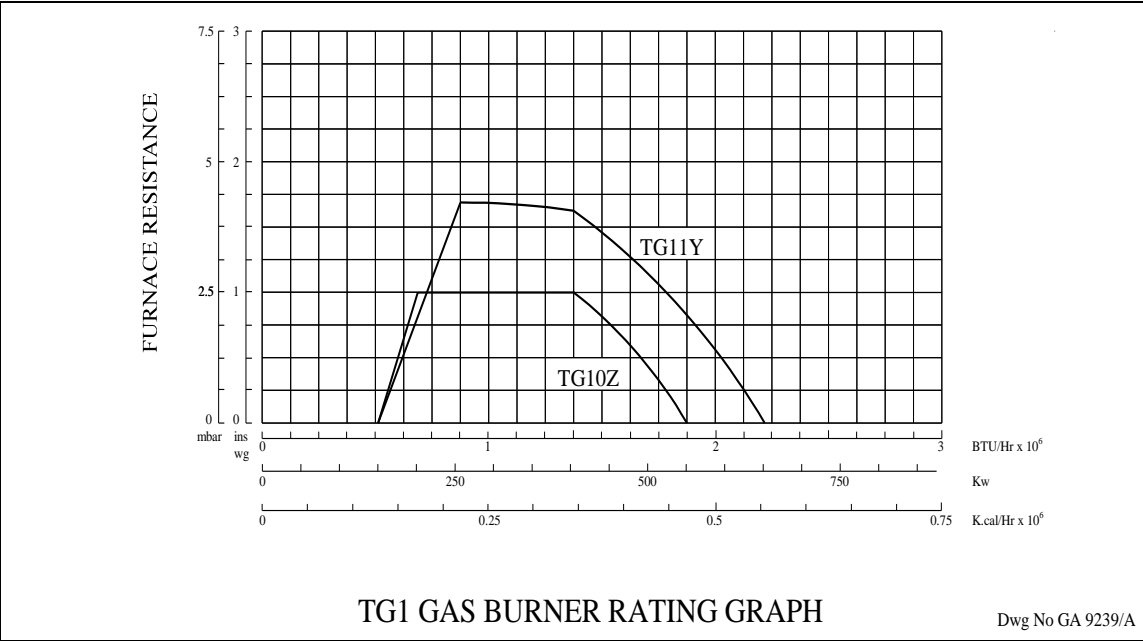
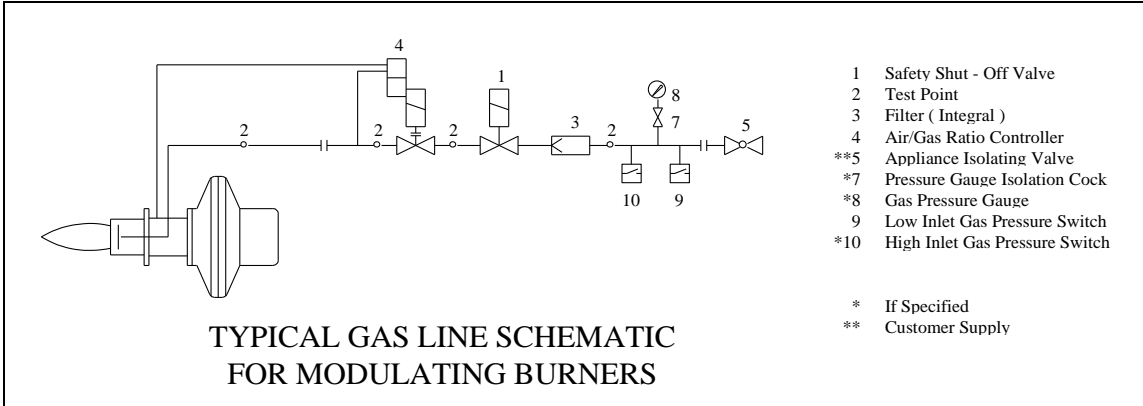
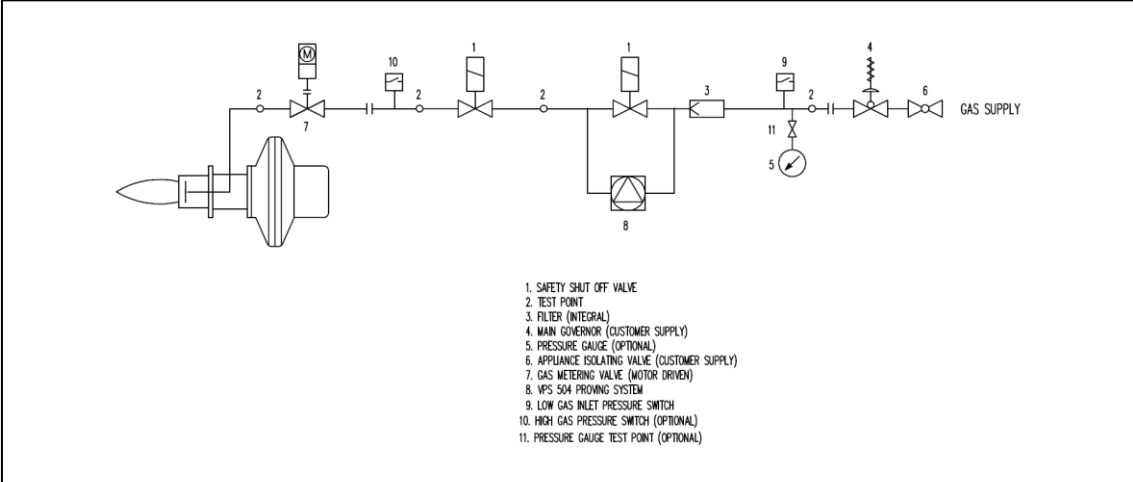


UNIBLOC	S	T	U	Weight
40 NS	490	89	40	18
50 NS	610	105	50	24

	A	B	C	D	E	F	G	H	I	J	K	L	M	N	P	R
TG10Z	230	143	555	14	580	325	251		165	300	251	M10	222	175	310	136
TG11Y	230	143	555	14	580	325	251	190		300	251	M10	222	200	310	136

- ◆ All dimensions in mm unless otherwise stated.
- ◆ Dimension 'A' is the minimum standard dimension and can be varied to suit application, requirements should be stated when unit is ordered.
- ◆ Dimension 'E' is the average swing radius; this can vary on non-standard burners.
- ◆ Burner shown is right-hand hinge; left-hand hinge is available as required.
- ◆ Please check the issue number to ensure validity.

BURNER RATING GRAPH & SCHEMATICS



STANDARD SPECIFICATION DATA

BURNER TYPE	Firing Rate kW		FIRING MODE OPTIONS				Motor kW	Voltage	Hz	Ph	Running Current	Starting Current	Weight
	MIN	MAX	HL / M	MPSC	MESC	ME							
TG10Z	170	550	✓	✓	✓	✓	0.55	380-420	50	3	3.5 Amp	8 Amp	47
TG11Y	170	650	✓	✓	✓	✓	0.55	380-420	50	3	3.5 Amp	8 Amp	49

Firing Mode Key:

HL / M – High / Low or modulating

MPSC – Fuel / air modulating ratio gas valve with speed control

MESC – Electronic modulating with speed control

ME – Electronic modulating

Dunphy Combustion Ltd. has a policy of continuous development and reserve the right to change prices and specifications without prior notice